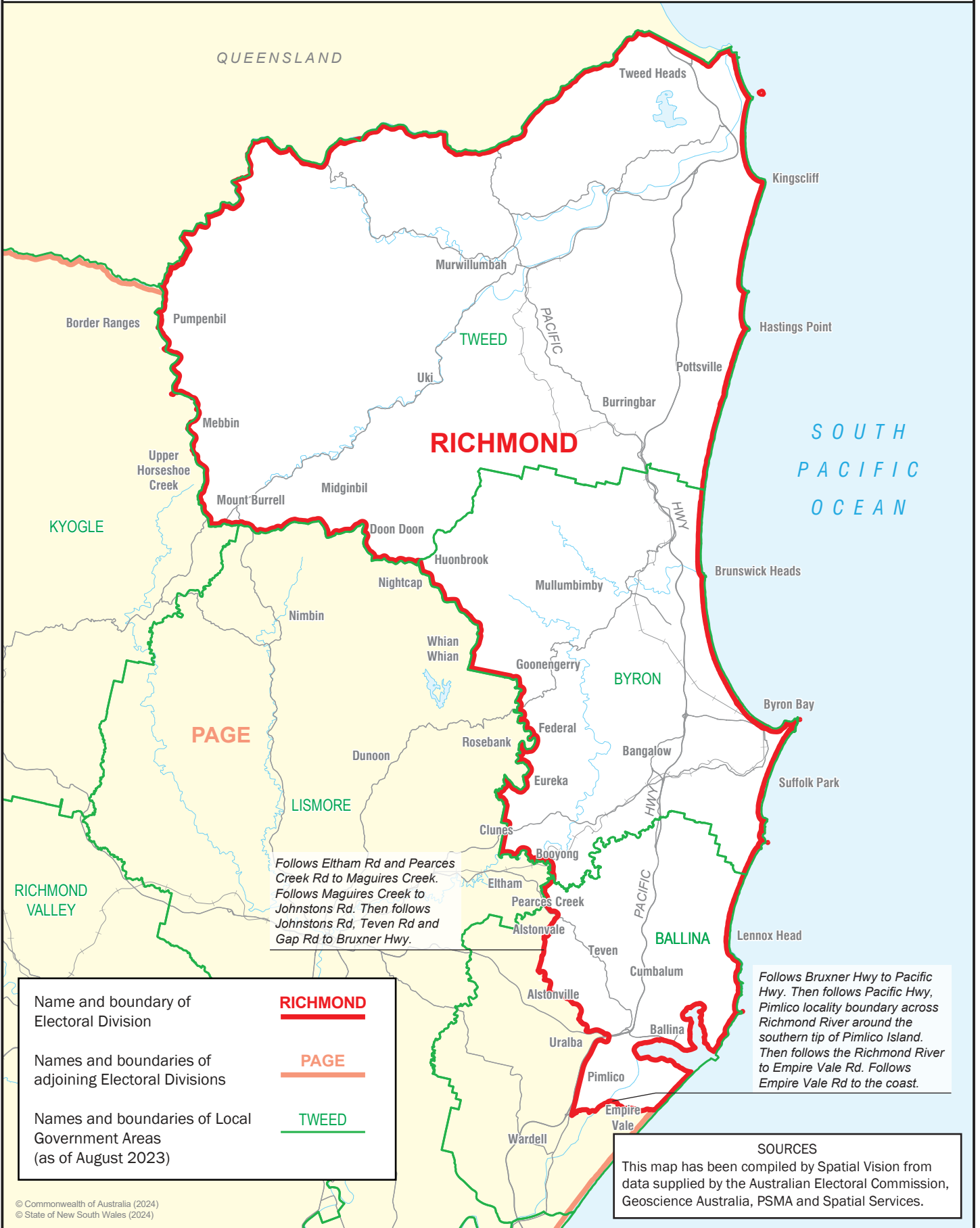




October 2024
**MAP OF COMMONWEALTH
 ELECTORAL DIVISION OF
 RICHMOND**



0 10 km



Follows Eltham Rd and Pearce's Creek Rd to Maguires Creek. Follows Maguires Creek to Johnstons Rd. Then follows Johnstons Rd, Teven Rd and Gap Rd to Bruxner Hwy.

Follows Bruxner Hwy to Pacific Hwy. Then follows Pacific Hwy, Pimlico locality boundary across Richmond River around the southern tip of Pimlico Island. Then follows the Richmond River to Empire Vale Rd. Follows Empire Vale Rd to the coast.

Name and boundary of Electoral Division	RICHMOND
Names and boundaries of adjoining Electoral Divisions	PAGE
Names and boundaries of Local Government Areas (as of August 2023)	TWEED

SOURCES
 This map has been compiled by Spatial Vision from data supplied by the Australian Electoral Commission, Geoscience Australia, PSMA and Spatial Services.