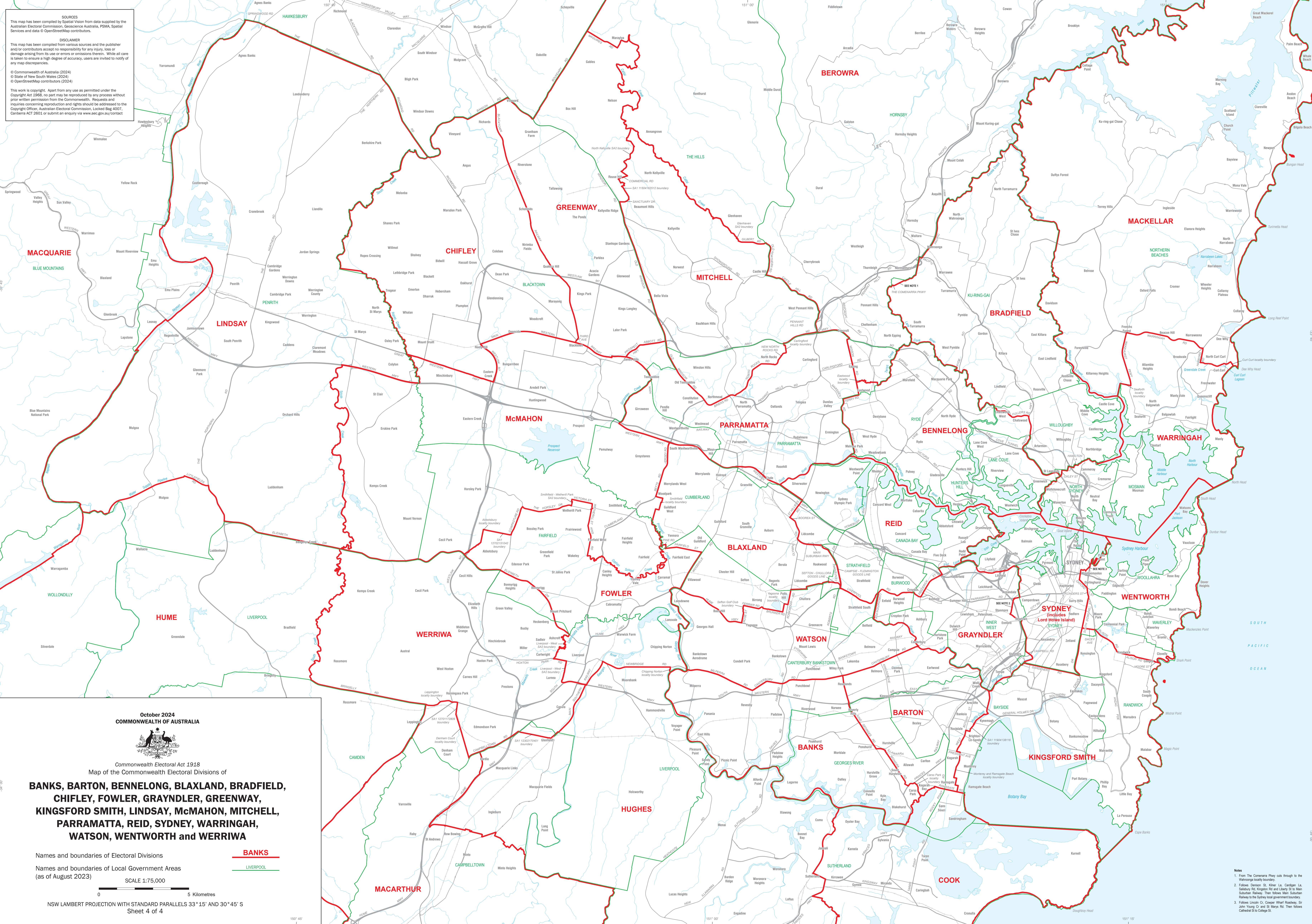


SOURCES
 This map has been compiled by Spatial Vision from data supplied by the Australian Electoral Commission, Geoscience Australia, PSMA, Spatial Services and data © OpenStreetMap contributors.


DISCLAIMER
 This map has been compiled from various sources and the publisher and/or contributors accept no responsibility for any injury, loss or damage arising from its use or errors or omissions therein. While all care is taken to ensure a high degree of accuracy, users are invited to notify of any map discrepancies.

© Commonwealth of Australia (2024)
 © State of New South Wales (2024)
 © OpenStreetMap contributors (2024)

This work is copyright. Apart from any use as permitted under the Copyright Act 1968, no part may be reproduced by any process without prior written permission from the Commonwealth. Requests and inquiries concerning reproduction and rights should be addressed to the Copyright Officer, Australian Electoral Commission, Locked Bag 4007, Canberra ACT 2601 or submit an enquiry via www.aec.gov.au/contact



**October 2024
 COMMONWEALTH OF AUSTRALIA**



Commonwealth Electoral Act 1918
 Map of the Commonwealth Electoral Divisions of

**BANKS, BARTON, BENNELONG, BLAXLAND, BRADFIELD,
 CHIFLEY, FOWLER, GRAYNDLER, GREENWAY,
 KINGSFORD SMITH, LINDSAY, McMAHON, MITCHELL,
 PARRAMATTA, REID, SYDNEY, WARRINGAH,
 WATSON, WENTWORTH and WERRIWA**

Names and boundaries of Electoral Divisions — **BANKS**

Names and boundaries of Local Government Areas — **LIVERPOOL**

SCALE 1:75,000

0 5 Kilometres

NSW LAMBERT PROJECTION WITH STANDARD PARALLELS 33° 15' AND 30° 45' S
 Sheet 4 of 4

Notes

1. From The Comenaria Hwy cuts through to the Wahroonga locality boundary.
2. Follows Denison St, Kinner, La, Carlglen, La, Sydney Rd, Kingston Rd and Leamy St to Main Suburban Railway. Then follows Main Suburban Railway to the Sydney local government boundary.
3. Follows Lincoln Cr, Cooper Wharf Roadway, Sir John Young Cr and St Marys Rd. Then follows Catherine St to College St.