



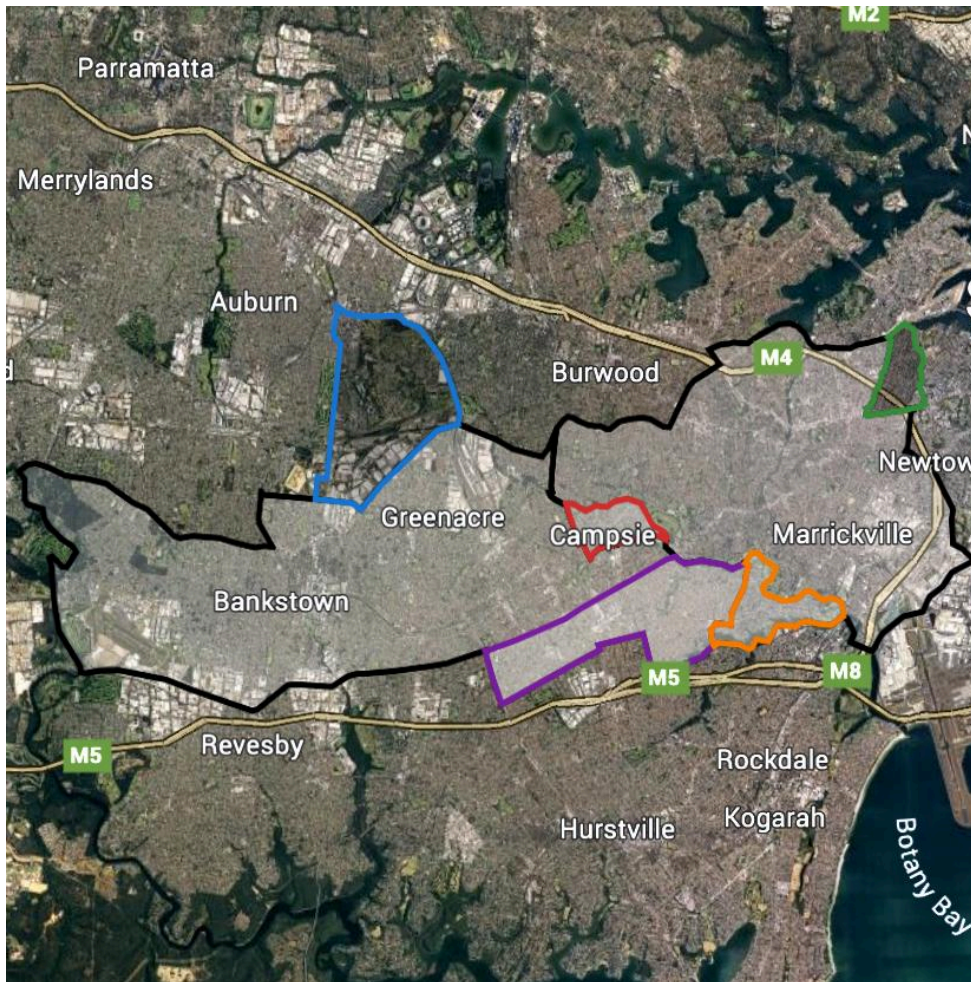
**THE FEDERAL
REDISTRIBUTION
NEW SOUTH WALES**

Comment on Objections 12

Oliver Wild

2 pages

This proposal looks at the redistribution in the Electorates of Watson & Grayndler, as well as minor changes to Blaxland and Sydney. I have included a Map and further commentary below.



- Purple - Barton to Watson
- Orange - Barton to Grayndler
- Red - Watson to Grayndler
- Blue - Watson to Blaxland
- Green - Grayndler to Sydney

Watson

I propose the Southern Boundary, East of King George's Road, expand further South to Moorefields Road, changing to William Street, again to Bexley Road, and finally Wolli Creek. This change will unify the suburb of Belmore.

I also propose the Eastern Boundary expand further East to Wardell Road, Homer Street and then Hartill-Law Avenue. This will put the Western Half of Earlwood into Watson which it was from its creation in 1993 until 2010. The part of Earlwood is Demographically more aligned with Suburbs on the West rather than the suburbs East of it, and typically use Services in those Suburbs. This change will benefit those communities and allow for more accurate representation.

To accommodate this, I propose that the Parts of Watson north of Bruncker Road and then the Hume Highway be redistributed from Watson to Blaxland. I also propose Northern Campsie be redistributed into Grayndler, which I expand on Below.

Grayndler

I believe Sydney should shift further West, and the best way to accommodate this is Annandale being moved from Grayndler to Sydney, as Annandale was part of Sydney from its creation in 1969 until 2016. This forces Grayndler to shift West and redistribute its South Eastern Border from the Cooks River to Wardell Road, taking in the Eastern Half of Earlwood, this makes sense as the Eastern section of Earlwood is more in line socially with its Eastern Suburbs in Grayndler rather than suburbs South in Barton.

I also propose Grayndler's South West Boundary shift from the Cooks River to Fifth Avenue, Loch Street and then the Train line until it crosses the Cooks River, this would move Northern Campsie from Watson into Grayndler, which would make sense given its communal connection to the Suburbs directly North with many residents accessing Services in Campsie.

I believe these changes are modest and would serve the community well. Thank you to the Electoral Commission for allowing the opposite for suggestions on such a valuable part of Democracy.

Kind regards.