



Suggestion 15

David Liam Walsh

27 pages

18 October 2020

Dear Members of the Redistribution Committee for Western Australia,

I'm pleased to submit my suggestion for the redrawing of Western Australia's federal electoral boundaries.

I hope you will find this useful in your deliberations.

Yours Faithfully,

David Walsh

Outline

For the purposes of electoral math, you can divide Western Australia up into four areas:

- **Perth metropolitan area** - the urban, suburban, and peri-urban communities surrounding the capital. Its extent can be defined by the administrative areas sitting at its four corners: City of Wanneroo, City of Swan, City of Armadale, and City of Rockingham LGAs. (Note: this does not include Shire of Serpentine-Jarrahdale.)
- **Peel region** - City of Mandurah, Shire of Serpentine-Jarrahdale, Shire of Murray, Shire of Waroona, Shire of Boddington LGAs.
- **South West region** - Shire of Harvey, City of Bunbury, Shire of Collie, Shire of Dardanup, Shire of Capel, Shire of Donnybrook-Balingup, City of Busselton, Shire of Augusta-Margaret River, Shire of Nannup, Shire of Bridgetown-Greenbushes, Shire of Boyup Brook, Shire of Manjimup LGAs.
- **Rural and outback WA** - The large, sparsely populated rural and outback areas; covers the Kimberley, Pilbara, Gascoyne, Mid West, Goldfields-Esperance, Wheatbelt, and Great Southern regions.

Here's how this looks on the provided enrolment figures, with each area's share of the state's new allocation of 15 seats:

Region	Enrolment	Quotas	Projected	Quotas
Perth metro	1,254,486	11.18	1,313,755	11.24
Peel	98,201	0.88	104,866	0.90
South West	124,610	1.11	131,115	1.12
Rural and outback WA	205,277	1.83	202,830	1.74

The present 16 seat electoral geography divides the state up into 11 Perth divisions, one Peel division (Canning), one South West division (Forrest), two rural/outback divisions (Durack and O'Connor) and one hybrid division straddling the Perth metropolitan and rural areas (Pearce). The electorates don't perfectly align to those areas - for instance, Canning extends beyond the Peel region, whilst Forrest excludes a handful of South West shires - but the correlation is readily apparent.

Given that the rural and outback area has substantially less than two quotas, the division of Pearce will either have to go, or be transformed into a purely metropolitan division. (I adopt the latter approach.)

Further, as the above table shows, even without Pearce extending into the wheatbelt, the rural and outback area falls substantially short of providing two full quotas. Some of the shortfall can be made up from the peripheral parts of the South West and Peel regions - indeed O'Connor presently includes four South West shires. However, rectifying all the shortfall by topping up entirely from these areas will destroy the correlation that Canning and Forrest have with the the Peel and South West regions respectively. Instead, one of the rural/outback seats ought to expand into the outskirts of the Perth metropolitan area.

The butcher of Pinjarra

When a state's allocation of seats is reduced by one, the question immediately becomes which division to eliminate. I believe Stirling to be obvious choice.

Firstly, Stirling is something of an anomaly on the electoral map of Perth's northern suburbs. It runs east-west in contrast to the north-south alignment of its immediate neighbours on Perth's northern beaches (Curtin and Moore). Admittedly, this replicates the arrangement of local government boundaries in the same area; the namesake City of Stirling LGA has a similar alignment. But whereas local government areas can remain indefinitely fixed, federal electorates need to evolve over subsequent redistributions. That evolution has left a couple of seats - Perth and Cowan - looking like Tetris blocks wrapping around the division of Stirling.

I suggest eliminating Stirling and apportioning its territory four ways. Everything west of the Mitchell Freeway can be allocated to Curtin and Moore to bring those two divisions to parity. Everything east of the freeway can be allocated to Perth and Cowan, making both seats more compact in the process. The elimination of Stirling also creates room to redraw Pearce as a purely outer northern suburban electorate.

Secondly, recent redistributions have been used as an opportunity to reconsider who we choose to honour in the naming of our federal electorates. It is simply not appropriate to honour men of extreme cruelty and brutality, who perpetrated the slaughter of innocents. I urge the committee to continue the precedent set by recent redistributions and recognise how unseemly it is for a federal electorate to bear the name of James Stirling.

On 28 October 1834, the Governor of Western Australia James Stirling led an armed party against a Noongar encampment on the Murray River near the town of Pinjarra. This resulted in the slaughter of perhaps 70 or 80 - estimates range from 15 to several hundred - Noongar men, women, and children. Once classified as a 'battle', this episode is now considered a massacre given the lopsidedness of the death toll. The gravity of this atrocity cannot be ignored.

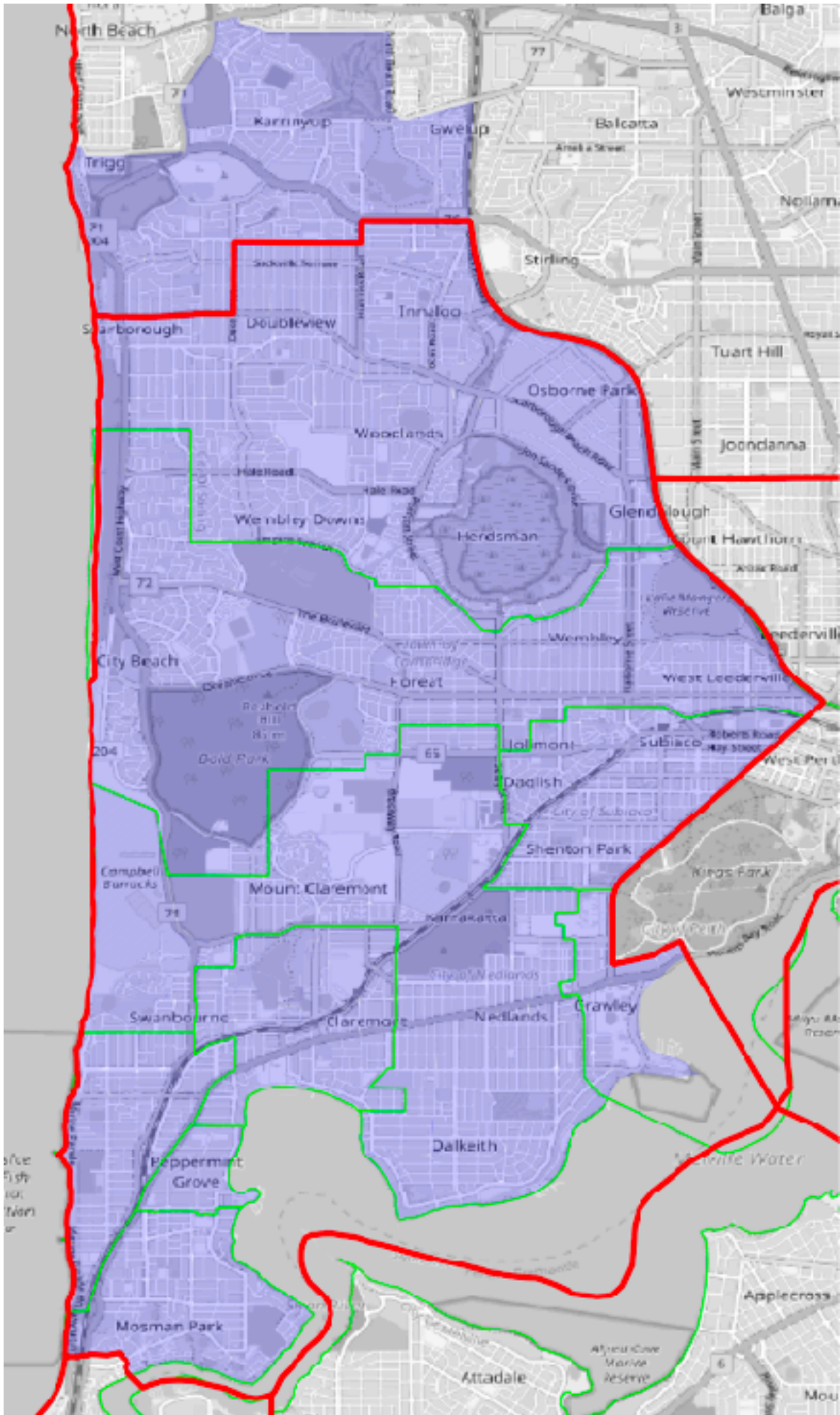
References

1. Owen, C (18 Nov 2019). 'The Pinjarra massacre: it's time to speak the truth of this terrible slaughter', *The Guardian*. Retrieved from <https://www.theguardian.com/australia-news/2019/nov/18/the-pinjarra-massacre-its-time-to-speak-the-truth-of-this-terrible-slaughter>
2. Warriner, J (26 Oct 2019). 'The scars of the Pinjarra massacre still linger 185 years after one of WA's bloodiest days', *ABC*. Retrieved from <https://www.abc.net.au/news/2019-10-26/the-scars-of-the-pinjarra-massacre-still-linger-185-years-on/11639642>

Curtin

Curtin requires some expansion and the obvious place to go is north. I suggest adding the remainder of Scarborough, part of Trigg south of Karrynyp Road, all of Karrynyp, and part of Gwellup south of North Beach Road. This results in a clearly defined (albeit somewhat up-and-down) boundary following a series of major roads: Karrynyp Rd, Marmion Ave, Reid Hwy, and North Beach Rd.

	Enrolment	Projected
Current division of Curtin	101,848	105,373
from Stirling		
Karrynyp - Gwelup - Carine SA2 (<i>part</i>)	8,305	8,648
Scarborough SA2 (<i>remainder</i>)	3,652	3,762
Trigg - North Beach - Watermans Bay SA2 (<i>part</i>)	689	748
Total	114,494	118,531

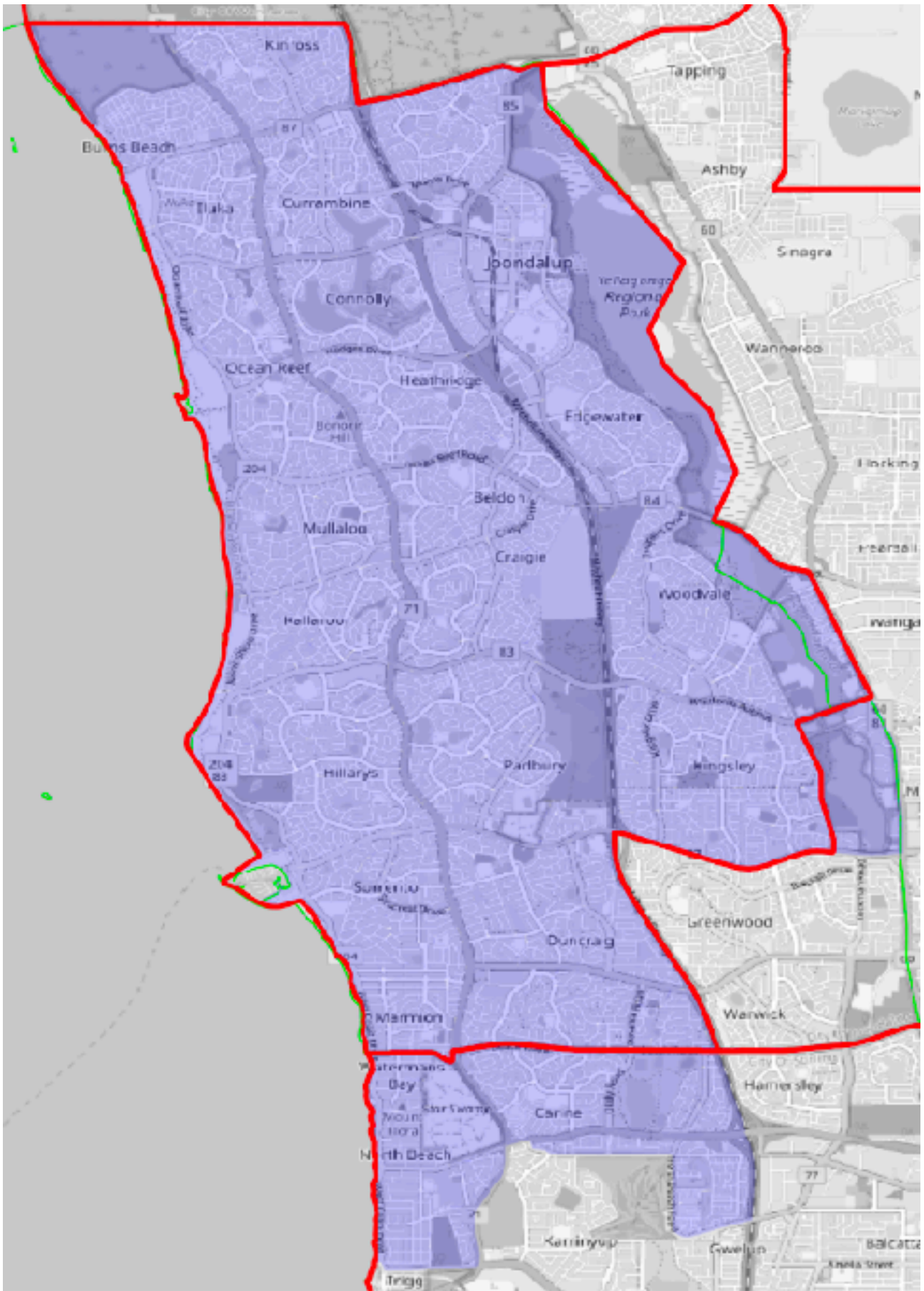


Suggested boundaries of Curtin

Moore

Like Curtin, Moore can maintain its current geography with some modest additions. It expands south by taking in everything else west of the Mitchell Freeway previously belonging to Stirling. That is, Watermans Bay, North Beach, Carine, plus the northern parts of Trigg and Gwellup. I've also made a slight adjustment to the eastern boundary to include the remainder of Kingsley.

	Enrolment	Projected
Current division of Curtin	102,441	104,031
from Cowan		
Kingsley SA2 (<i>remainder</i>)	780	763
from Stirling		
Karrinyup - Gwelup - Carine SA2 (<i>part</i>)	6,761	7,043
Trigg - North Beach - Watermans Bay SA2 (<i>part</i>)	5,287	5,472
Total	115,269	117,309

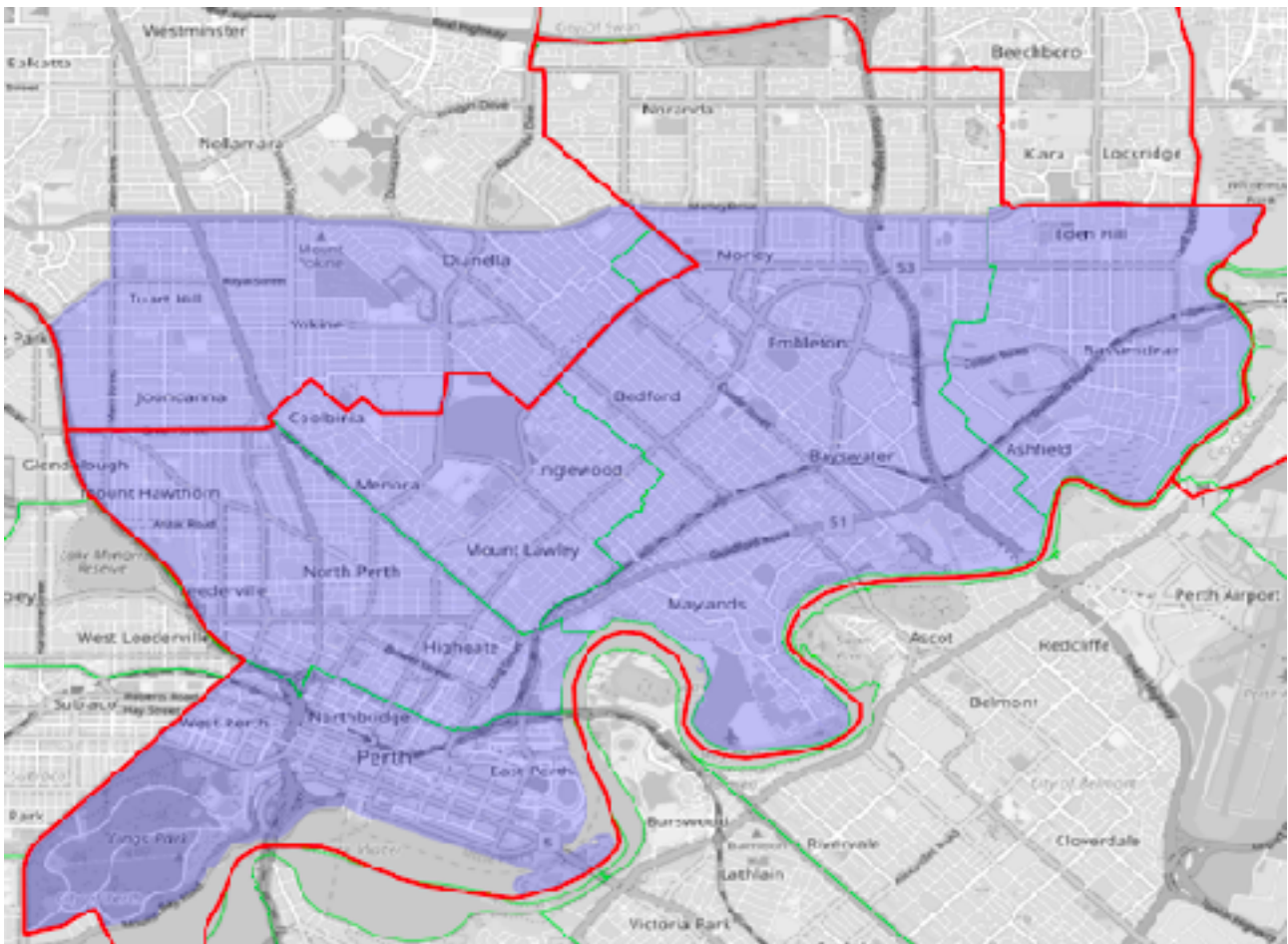


Suggested boundaries of Moore

Perth

The elimination of Stirling lets us redraw the L-shaped Perth division into a more compact form by aligning its northern boundary to Morley Drive. This results in the excision of Noranda and part of Morley, in return gaining Joondanna, Tuart Hill, Yokine, part of Dianella, and part of Osborne Park. The northern boundary of Morley Dr and the western boundary of Mitchell Fwy are joined by Main St and Hutton St in Osborne Park.

	Enrolment	Projected
Current division of Perth	104,026	106,518
LESS Morley SA2 (part)	-9,320	-9,334
LESS Noranda SA2	-5,901	-5,676
from Stirling		
Dianella SA2 (part)	8,945	8,995
Morley SA2 (part)	533	531
Stirling - Osborne Park SA2 (part)	1,396	1,246
Tuart Hill - Joondanna SA2	8,189	8,080
Yokine - Coolbinia - Menora SA2 (remainder)	8,374	8,158
Total	116,242	118,518



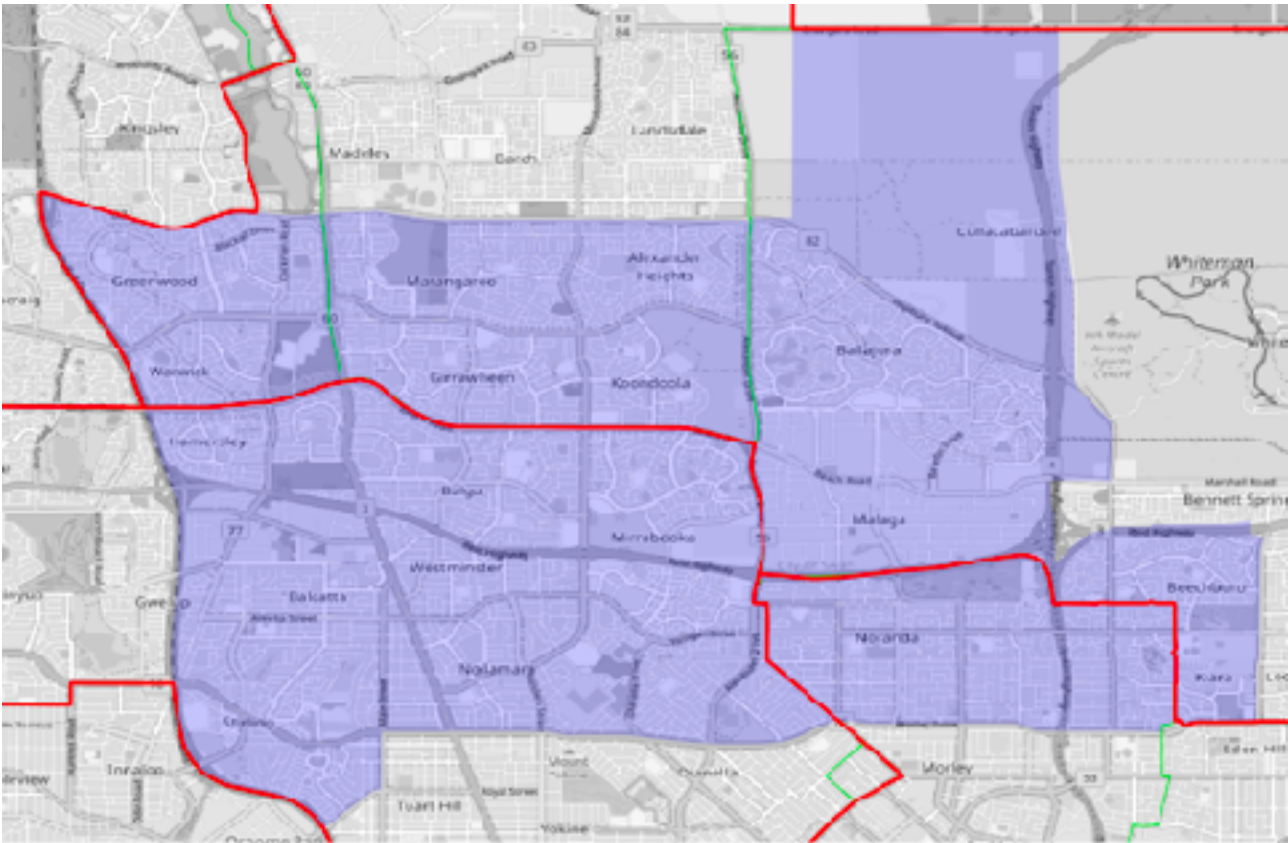
Suggested boundaries of Perth

Cowan

Stirling's removal also results in a more compact Cowan. This redrawn division combines everything from Cowan south of Hepburn Avenue with everything in Stirling and Perth north of Morley Drive, as well the suburb of Stirling and the northern most part of Osborne Park. To make the numbers work, the boundary in the east has been adjusted to exclude Bennett Springs and Lockridge, and only includes Beechboro as far as Altone Road.

Note that this division is effectively an amalgamation of Cowan and Stirling. In fact, a slight plurality of electors come from Stirling. Of Stirling plenty has been said, so let's briefly make the case for Cowan. Edith Cowan was the first female member of any Australian parliament, and before that was a prominent advocate for women's suffrage. Cowan is one of only two federal electorates in Western Australia named solely for a woman.

	Enrolment	Projected
from Cowan		
Alexander Heights - Koondoola SA2	7,806	7,932
Ballajura SA2	12,769	12,995
Beechboro SA2 (<i>part</i>)	4,067	4,160
Girrawheen SA2	5,481	5,394
Greenwood - Warwick SA2	9,619	9,747
Lockridge - Kiara SA2 (<i>part</i>)	1,260	1,244
Malaga SA2	4	4
Marangaroo SA2	7,169	7,203
from Stirling		
Balcatta - Hamersley SA2	11,095	11,033
Balga - Mirrabooka SA2	11,891	11,992
Dianella SA2 (<i>part</i>)	8,618	8,776
Nollamara - Westminster SA2	11,155	11,529
Stirling - Osborne Park SA2 (<i>part</i>)	8,233	8,427
from Perth		
Morley SA2 (<i>part</i>)	9,320	9,334
Noranda SA2	5,901	5,676
Total	114,388	115,446



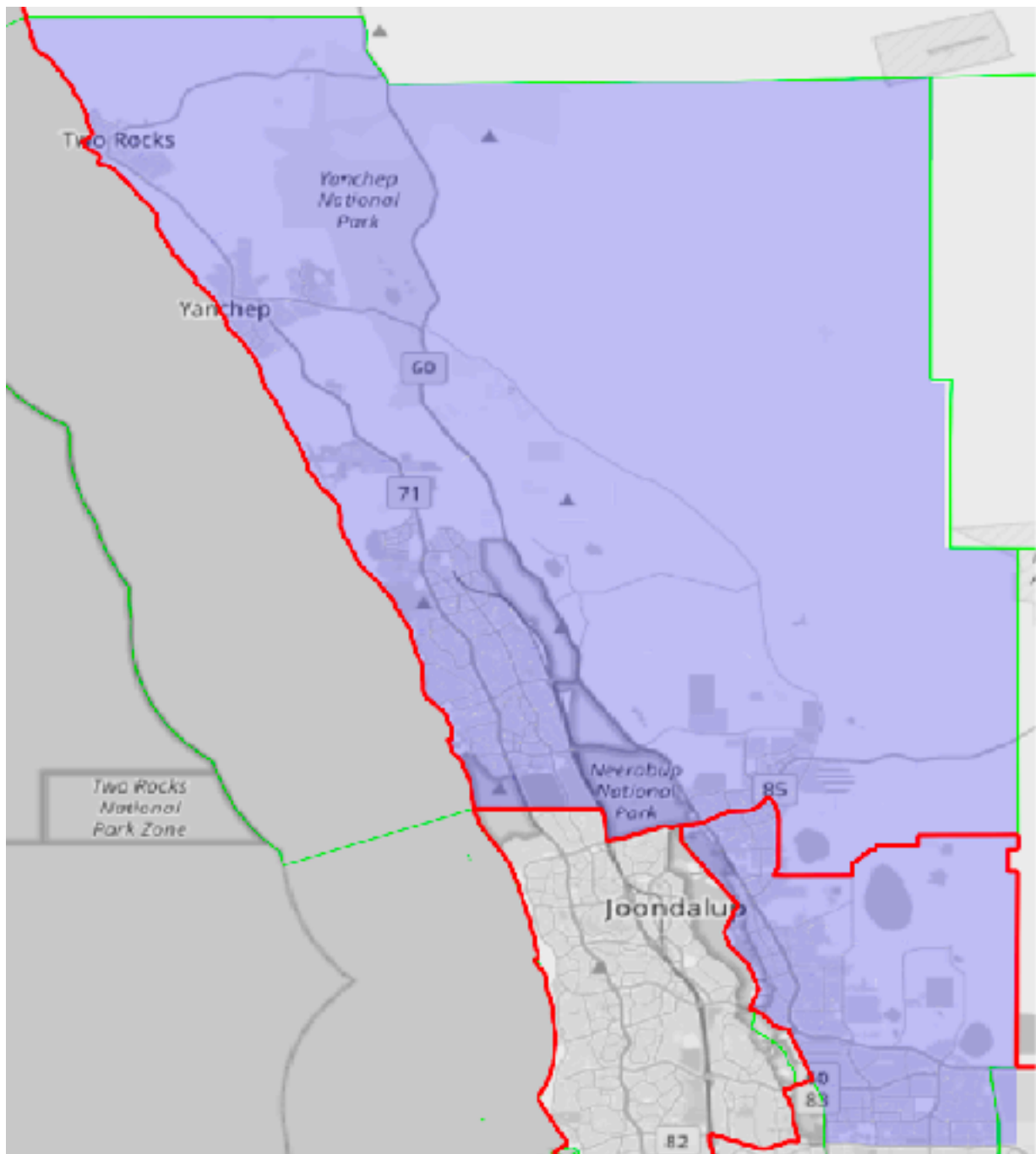
Suggested boundaries of Cowan

Pearce

The current Pearce combines several wheatbelt shires with two distinct suburban areas: the outer northern suburbs along Wanneroo Rd and the Swan Hills area around Ellenbrook. I suggest redrawing the electorate to retain only the City of Wanneroo portion. This area contains roughly half the electors in the present division of Pearce, but provides enough for about 60 per cent of the new electorate. The remainder is drawn from Cowan, taking everything north of Hepburn Avenue.

The result is a very different looking Pearce, but one with a much stronger community of interest being a solely outer suburban electorate.

	Enrolment	Projected
from Cowan		
Madeley - Darch - Landsdale SA2	18,088	20,464
Tapping - Ashby - Sinagra	7,750	8,133
Wanneroo SA2	18,007	18,756
from Pearce		
Alkimos - Eglinton SA2	6,527	9,165
Carabooda - Pinjar SA2	522	587
Butler - Merriwa - Ridgewood SA2	14,075	14,965
Carramar SA2	10,561	12,010
Clarkson SA2	8,313	8,998
Mindarie - Quinns Rocks - Jindalee SA2	13,412	15,017
Neerabup National Park SA2	4	4
Tapping - Ashby - Sinagra SA2	613	647
Two Rocks SA2	2,294	2,672
Yanchep SA2	6,076	7,410
Total	106,242	118,828

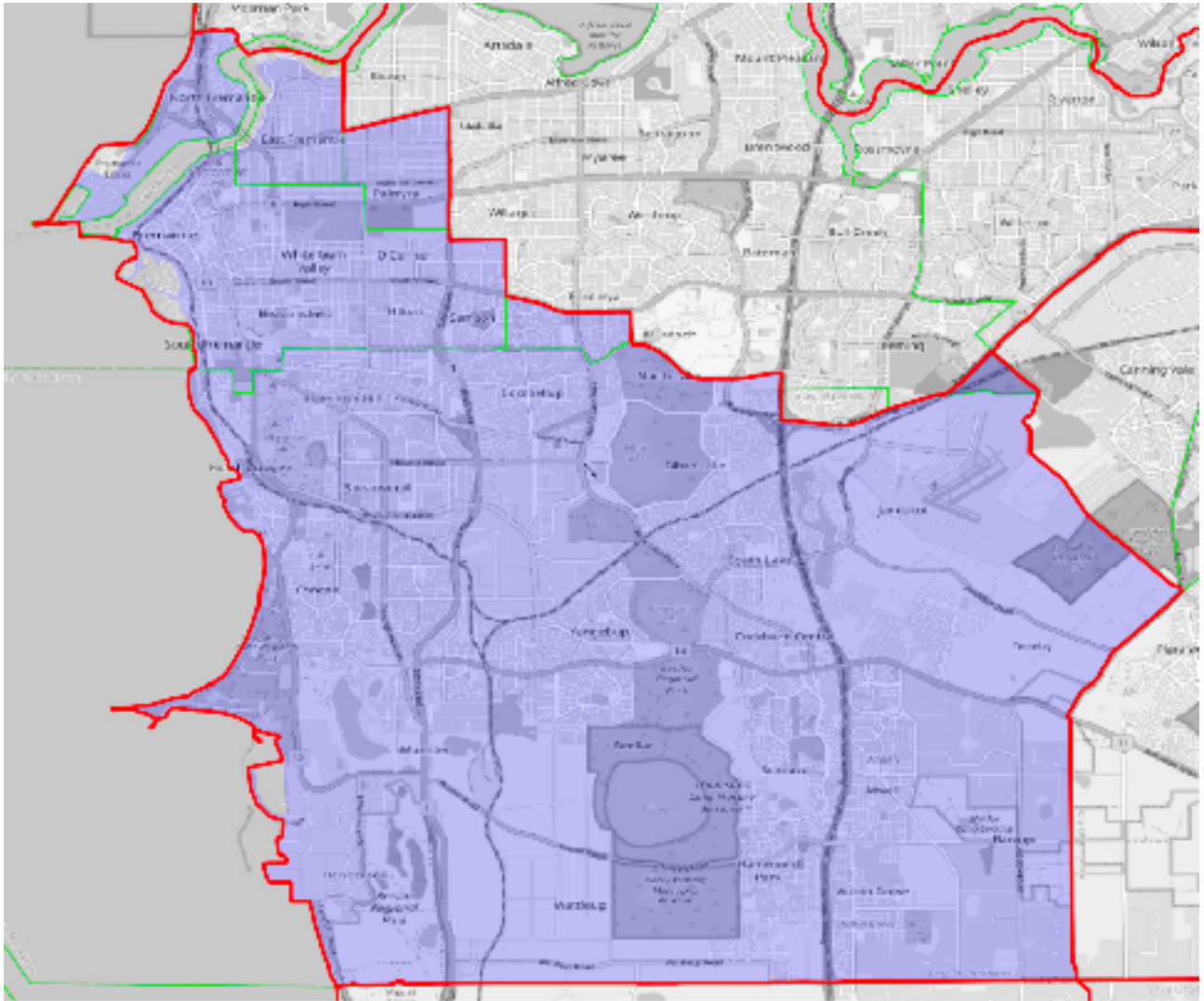


Suggested boundaries of Pearce

Fremantle

Fremantle is at parity and can remain unchanged.

	Enrolment	Projected
Current division of Fremantle	109,269	115,628

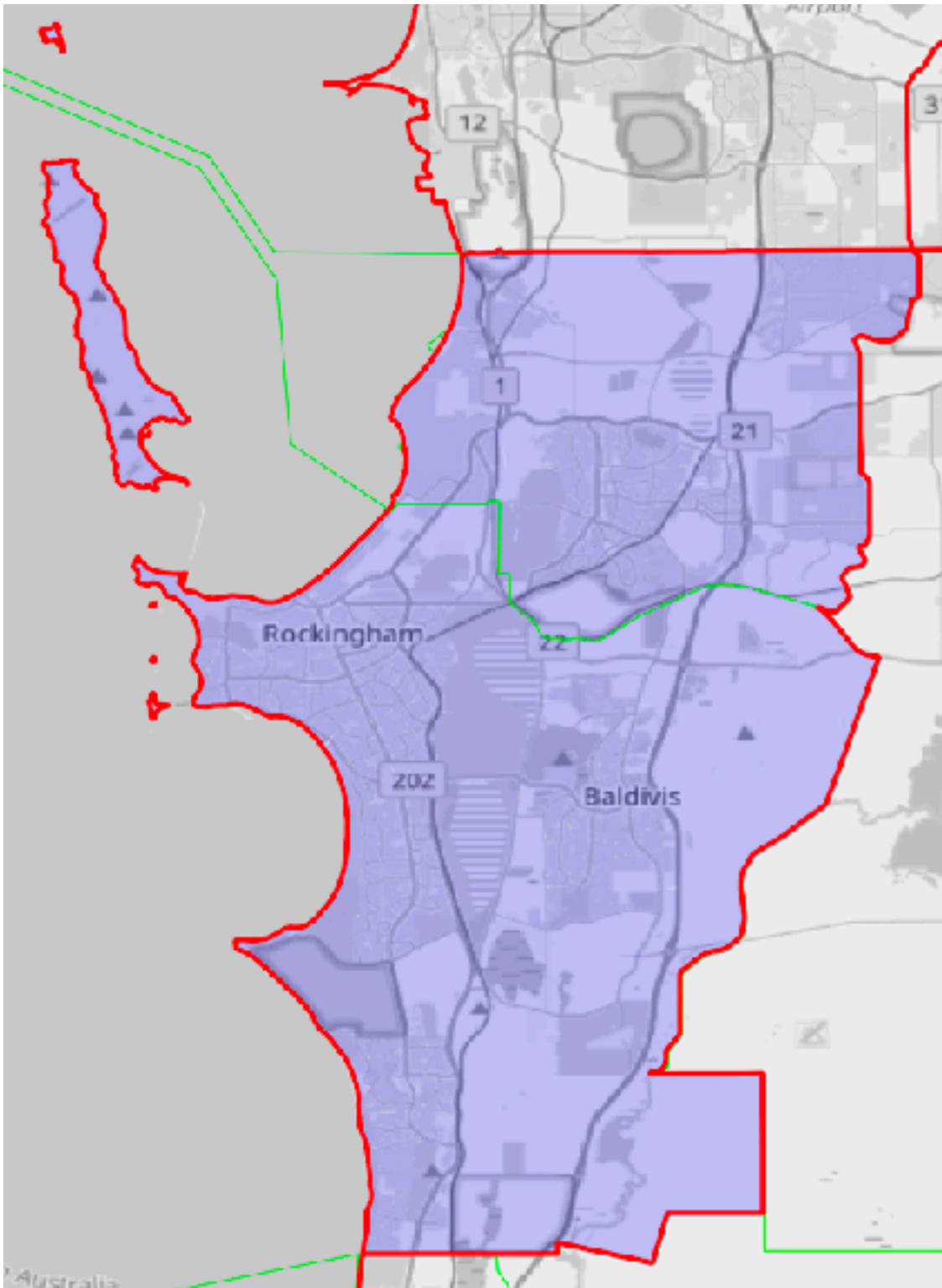


Suggested boundaries of Fremantle

Brand

Brand is within tolerance albeit towards the high end on projected figures. Given that it aligns perfectly with LGA boundaries, I suggest it remain unchanged.

	Enrolment	Projected
Current division of Brand	110,508	119,561



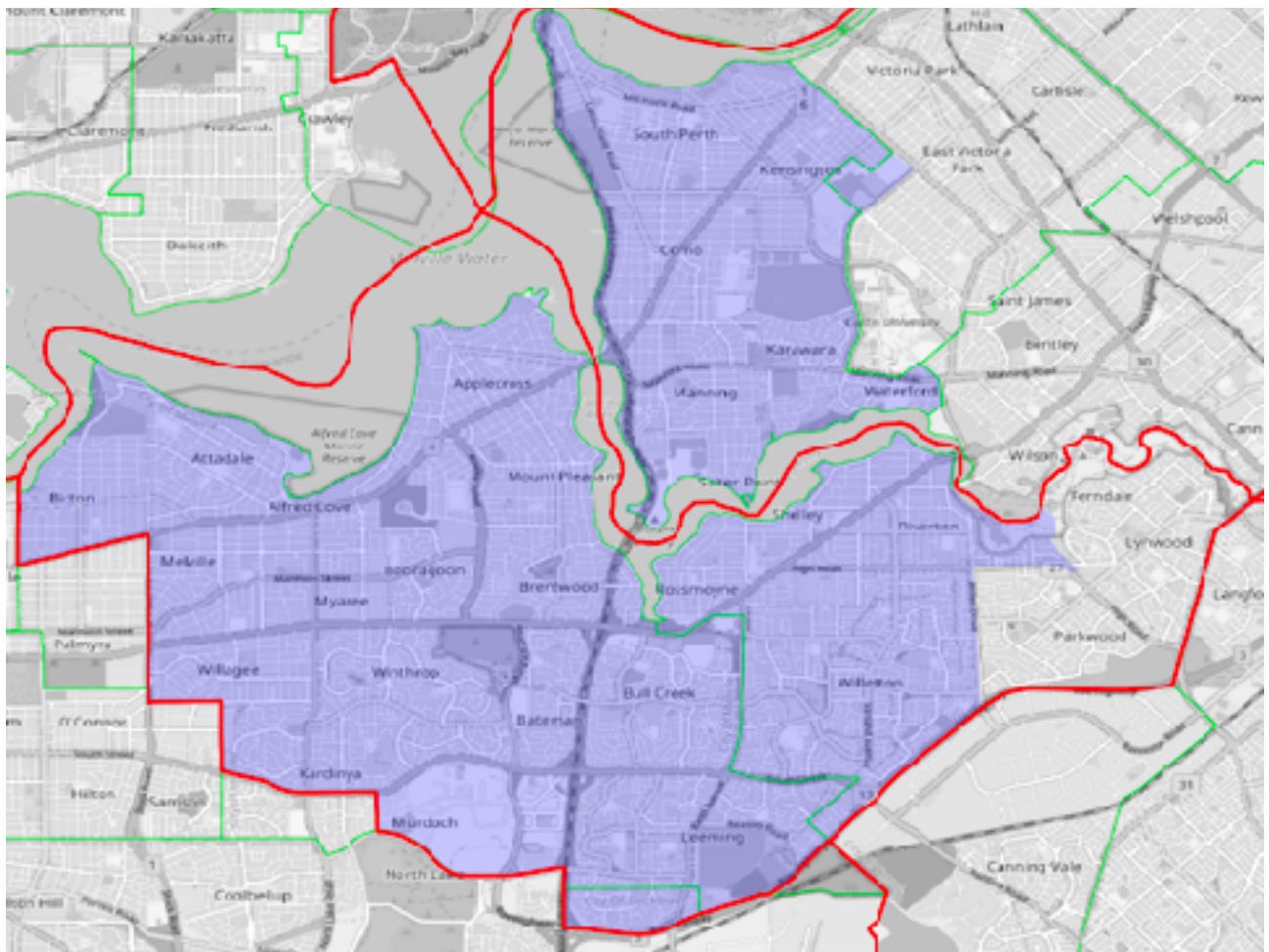
Suggested boundaries of Brand

Tangney

Tangney is the most below quota division on present boundaries, requiring a substantial expansion to be brought up to parity. Given Fremantle is to remain unchanged, Tangney must find approximately 20,000 additional voters at its eastern end. The obvious solution is add Canning Vale in the south east. However, in mapping this out I found transferring Canning Vale from Burt to Tangney resulted in some unfortunate knock-on effects, requiring compensating adjustments to Burt that produced either a disjoint Burt or a disjoint Swan.

Instead, I suggest transferring the City of South Perth LGA into Tangney. Whilst this breaches the traditional boundary of the Canning River, there is a clear community of interest, including several road links, based around the riverside suburbs of the City of Melville, City of Canning, and City of South Perth LGAs. Adding the City of South Perth LGA requires compensating adjustments, so the suburbs of Parkwood, Ferndale, and Lynwood are excised.

	Enrolment	Projected
Current division of Tangney	94,827	95,804
LESS Parkwood - Ferndale - Lynwood SA2	-9,080	-8,914
from Swan		
Como SA2	9,987	10,048
Manning - Waterford SA2	7,414	7,758
South Perth - Kensington SA2	11,910	12,136
Total	115,058	116,832

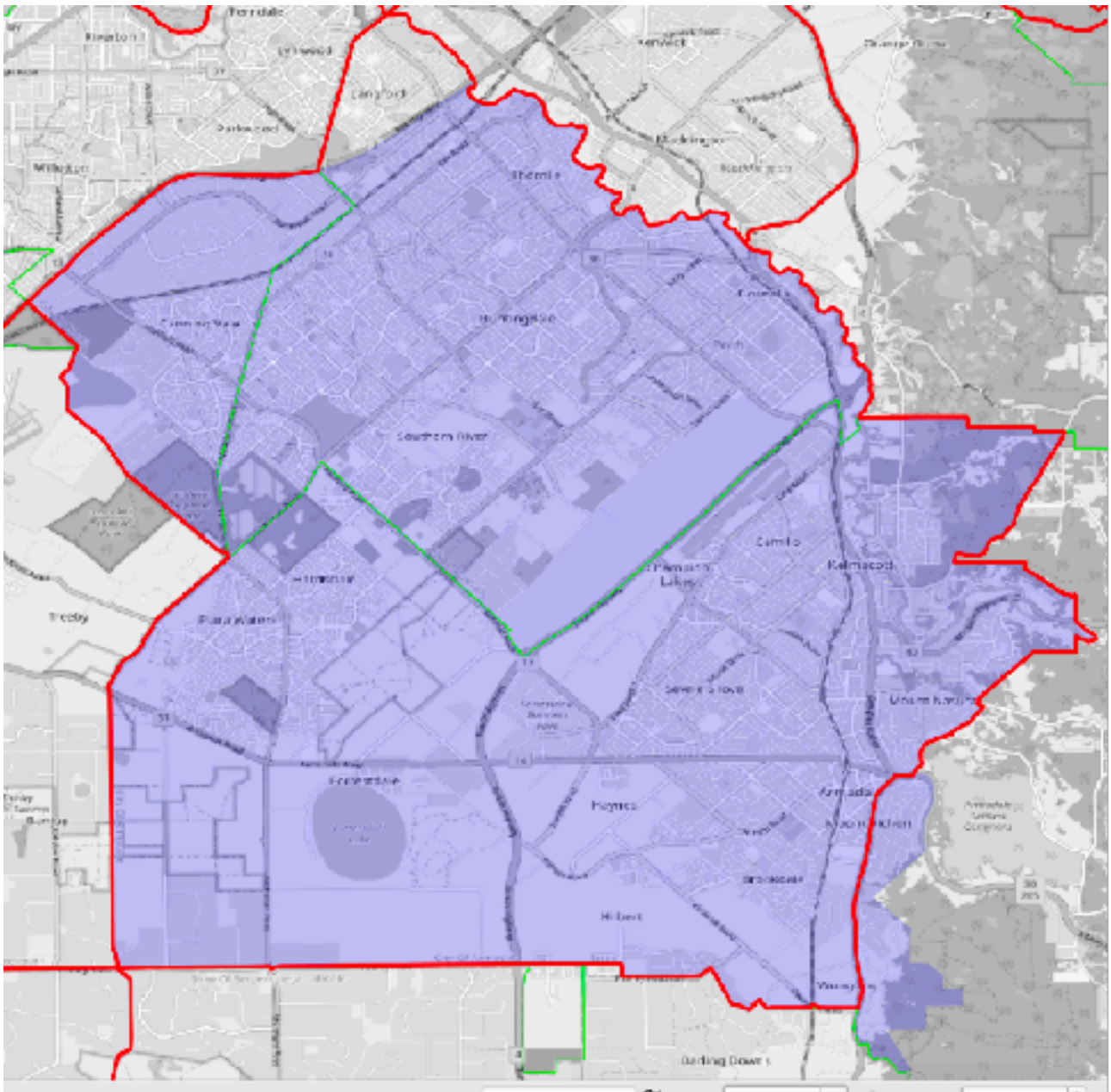


Suggested boundaries of Tangney

Burt

On its current boundaries Burt is at parity and could be left untouched. I suggest making a couple of small adjustments to improve its community of interest. First, I remove Langford, aligning the entire northwestern boundary to the Roe Highway. Secondly, I add Mount Richon in the south east given the suburb's obvious connection to Armadale.

	Enrolment	Projected
Current division of Burt	109,053	116,511
LESS Beckenham - Kenwick - Langford SA2 (remainder)	-3,277	-3,295
from Canning		
Mount Nasura - Mount Richon - Bedforddale SA2 (part)	1,552	1,617
Total	107,328	114,833

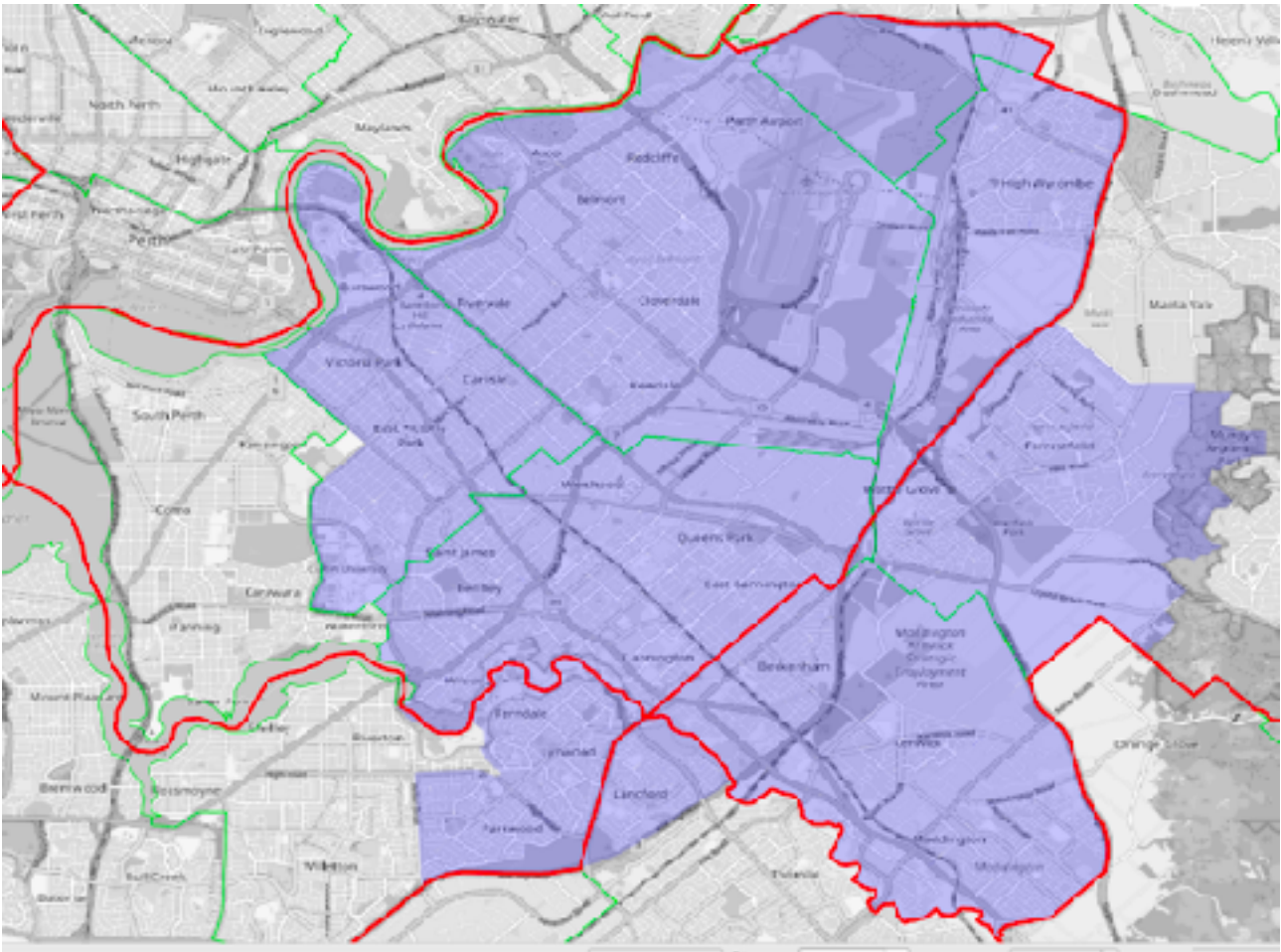


Suggested boundaries of Burt

Swan

Swan begins as an under quota division, and requires especially large compensating adjustments to account for the loss of the City of South Perth LGA. I suggest expansion to the south, adding Parkwood, Ferndale, Lynwood, and Langford; to the south east, adding Beckenham, Kenwick, and Maddington; and to the east, adding Forrestfield and Wattle Grove. These changes result in a rather different looking electorate, but still a compact one with a clear community of interest. In particular, the eastward expansion into Forrestfield makes High Wycombe less of an outlier in this seat.

	Enrolment	Projected
Current division of Swan	102,932	105,211
LESS Como SA2	-9,987	-10,048
LESS Manning - Waterford SA2	-7,414	-7,758
LESS South Perth - Kensington SA2	-11,910	-12,136
from Burt		
Beckenham - Kenwick - Langford SA2 (<i>remainder</i>)	3,277	3,295
from Hasluck		
Beckenham - Kenwick - Langford SA2 (<i>remainder</i>)	8,243	8,538
Forrestfield - Wattle Grove SA2	12,345	12,626
Maddington - Orange Grove - Martin SA2 (<i>remainder</i>)	6,989	7,299
from Tangney		
Parkwood - Ferndale - Lynwood SA2	9,080	8,914
Total	113,555	115,941

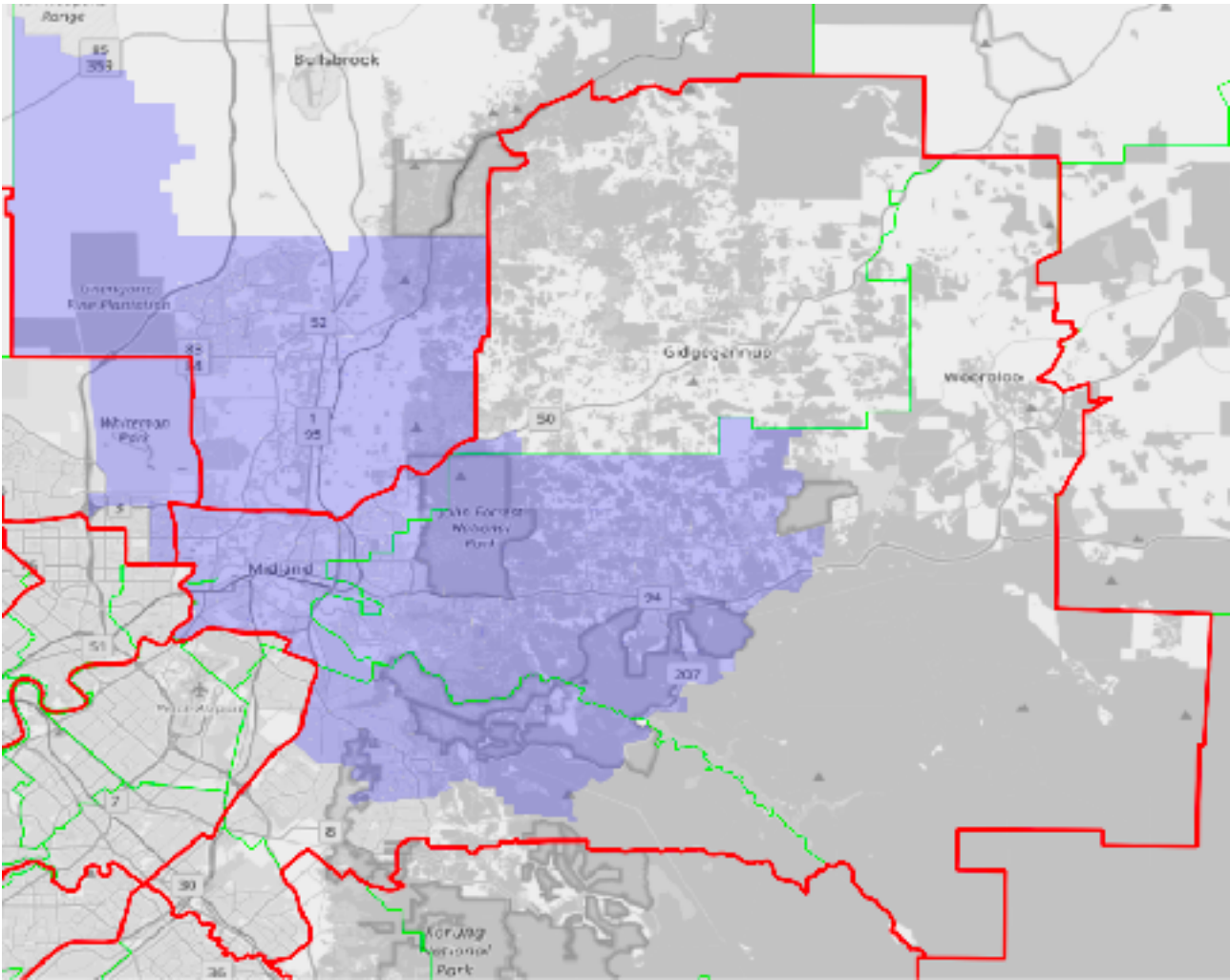


Suggested boundaries of Swan

Hasluck

Over its existence of two decades, Hasluck has straddled a collection of different suburban areas in Perth's outer east. This redistribution offers the opportunity to somewhat narrow its focus, restricting it to just three LGAs: City of Swan, City of Mundaring, and City of Kalamunda, retaining Midland at its heart. Even after the allocation of parts of these areas to other electorates, these shires provide too much for a single division. I draw it west to include Bennett Springs, the eastern third of Beechboro, and Lockridge; north to Ellenbrook, The Vines, and Upper Swan; east to Mount Helena and Sawyers Valley; and south to include all of Kalamunda. It is unfortunate to exclude Lesmurdie and Walliston in the south, but the numbers simply won't allow it. (A small portion of Lesmurdie is retained to allow a clear boundary along Falls Rd and Lesmurdie Rd.) The furthest outlying parts of the City of Swan and City of Mundaring LGAs are excluded.

	Enrolment	Projected
Current division of Hasluck	100,732	103,715
LESS Beckenham - Kenwick - Langford SA2 (<i>remainder</i>)	-8,243	-8,538
LESS Chidlow SA2	-2,037	-1,963
LESS Forrestfield - Wattle Grove SA2	-12,345	-12,626
LESS Gidgegannup SA2 (<i>part</i>)	-2,116	-2,180
LESS Lesmurdie - Bickley - Carmel SA2 (<i>part</i>)	-6,666	-6,984
LESS Maddington - Orange Grove - Martin SA2 (<i>remainder</i>)	-6,989	-7,299
LESS Malmalling - Reservoir SA2	-9	-9
from Cowan		
Beechboro SA2 (<i>part</i>)	5,466	5,336
Lockridge - Kiara (<i>part</i>)	2,277	2,119
from Pearce		
Beechboro SA2 (<i>remainder</i>)	2,915	3,722
Ellenbrook SA2	25,183	29,845
Gidgegannup SA2 (<i>part</i>)	24	26
Lockridge - Kiara SA2 (<i>remainder</i>)	13	19
Melaleuca - Lexia SA2	2	2
Middle Swan - Herne Hill SA2 (<i>remainder</i>)	1,509	1,529
Stratton - Jane Brook SA2 (<i>remainder</i>)	0	0
The Vines SA2	7,604	9,100
Wanneroo SA2 (<i>part</i>)	23	27
Total	107,343	115,841

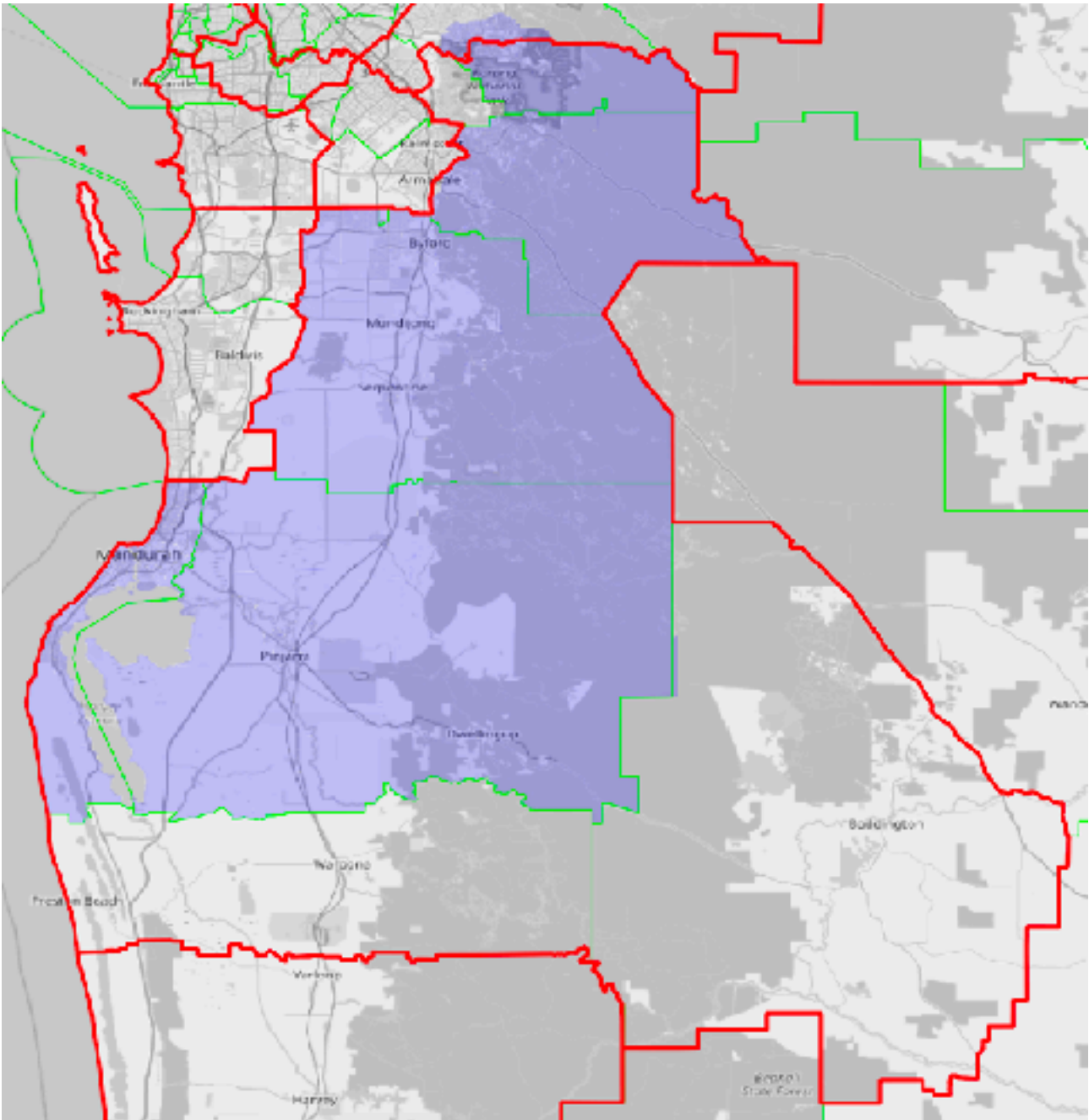


Suggested boundaries of Hasluck

Canning

Canning is presently at parity, but changes to other divisions force a few changes. The division expands north to include Lesmurdie, Walliston and Bickley. It makes compensating adjustments by shedding Mount Richon, as well as the Shire of Boddington and the Shire of Waroona LGAs. Canning retains its focus as a mostly Peel region based electorate.

	Enrolment	Projected
Current division of Canning	110,091	117,835
<i>LESS</i> Mount Nasura - Mount Richon - Bedforddale SA2 (<i>part</i>)	-1,552	-1,617
<i>LESS</i> Shire of Boddington LGA	-1,161	-1,123
<i>LESS</i> Shire of Waroona LGA	-2,961	-3,045
from Hasluck		
Lesmurdie - Bickley - Carmel SA2 (<i>part</i>)	6,666	6,984
Total	111,083	119,034

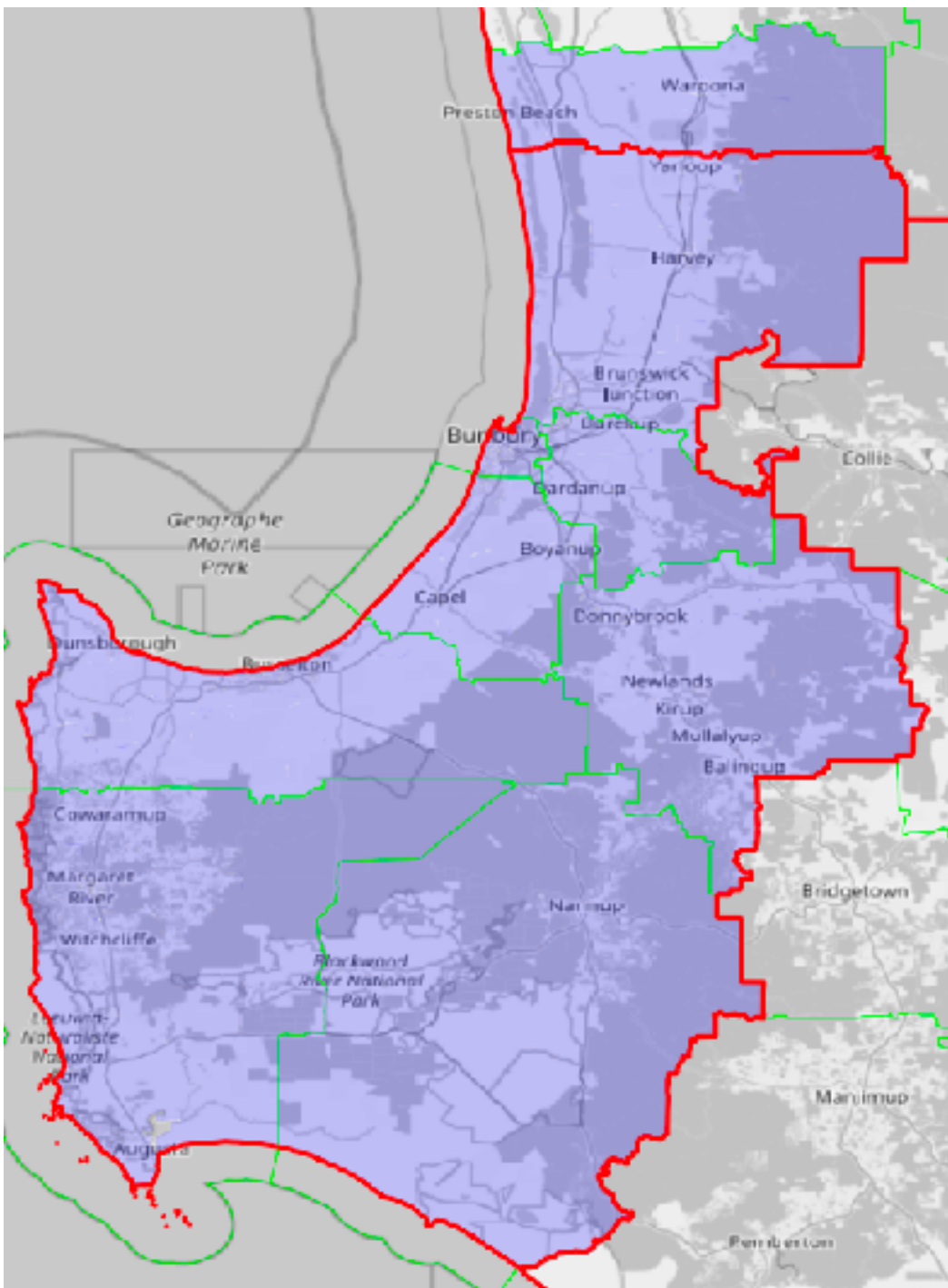


Suggested boundaries of Canning

Forrest

Forrest is presently within tolerance on both sets of figures, but towards the lower end. I suggest getting it closer to parity with a northward expansion to include the Shire of Waroona LGA. Forrest retains its focus as a South West region based electorate.

	Enrolment	Projected
Current division of Forrest	107,326	113,971
from Canning		
Shire of Waroona LGA	2,961	3,045
Total	110,287	117,016

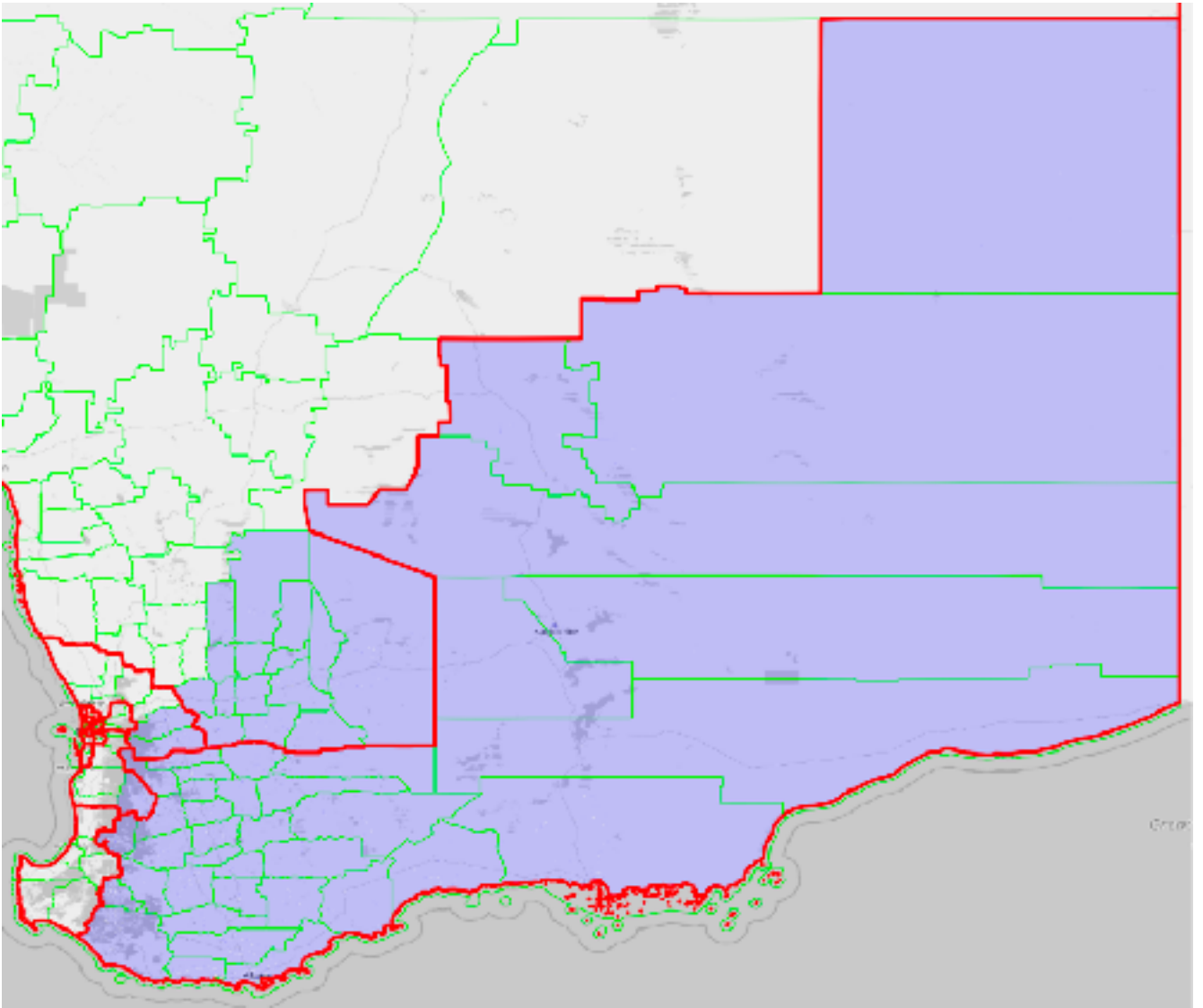


Suggested boundaries of Forrest

O'Connor

O'Connor is projected to be well under quota and must expand. I have avoided transfers from Forrest to avoid excessive splitting of the South West region. The only change I suggest in that area is the transfer of Shire of Boddington LGA from Canning. The rest of its numbers must come from the wheatbelt. I suggest transferring all eleven LGAs in the Central East subregion (from Durack), plus six LGAs in the Avon subregion: Shire of Wyalkatchem, Shire of Cunderin, Shire of Tammin, and Shire of Quairading (from Durack), plus the Shire of York and Shire of Beverley (from Pearce).

	Enrolment	Projected
Current division of O'Connor	101,985	101,703
from Canning		
Shire of Boddington LGA	1,161	1,123
from Durack		
Cunderdin SA2	2,546	2,390
Dowering SA2 (<i>part</i>)	601	545
Kulin SA2 (<i>remainder</i>)	5	5
Merredin SA2	3,294	3,284
Mukinbudin SA2	1,913	1,784
from Pearce		
York - Beverley SA2	4,017	4,000
Total	115,522	114,834

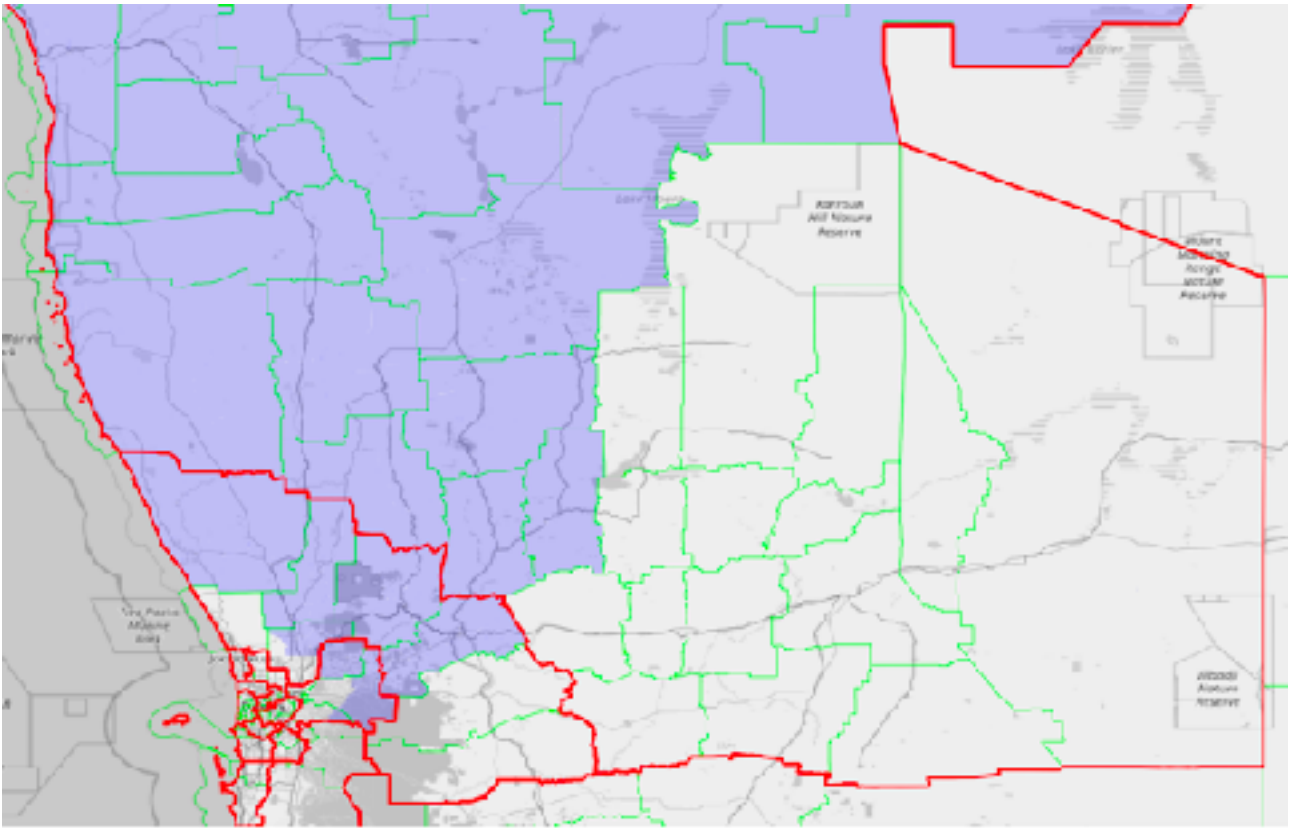


Suggested boundaries of O'Connor

Durack

Durack's shortfall is made worse by transfers to O'Connor, only partially rectified by the inclusion of four wheatbelt LGAs from Pearce: Shire of Gingin, Shire of Chittering, Shire of Toodyay, and the Shire of Northam. The rest must come from the outlying areas of the Perth metropolitan area: from the City of Swan, Bullsbrook and Gidgegannup; from the City of Mundaring, Chidlow, Beechina, The Lakes, Ballup, Woorloo, Gorrie, and Malmalling. Whilst it is unfortunate for an electorate that stretches to the Kimberley to breach the Perth metropolitan area, these are lightly populated rural areas, not out of character with their neighbouring wheatbelt areas.

	Enrolment	Projected
Current division of Durack	98,382	95,524
<i>LESS Cunderdin SA2</i>	-2,546	-2,390
<i>LESS Dowering SA2 (part)</i>	-601	-545
<i>LESS Kulin SA2 (remainder)</i>	-5	-5
<i>LESS Merredin SA2</i>	-3,294	-3,284
<i>LESS Mukinbudin SA2</i>	-1,913	-1,784
from Hasluck		
Chidlow SA2	2,037	1,963
Malmalling - Reservoir SA2	9	9
Gidgegannup SA2 <i>(remainder)</i>	2,116	2,180
from Pearce		
Avon Valley National Park SA2	5	5
Bullsbrook SA2	3,618	3,993
Chittering SA2	3,920	4,408
Gingin - Dandaragan SA2 <i>(remainder)</i>	3,582	3,658
Northam SA2	7,349	7,228
Toodyay SA2	3,326	3,453
Walyunga National Park SA2	1	1
Total	115,986	114,414



Suggested boundaries of Durack (southern end)