



Map of the proposed Commonwealth electoral divisions of  
**CAPRICORNIA, DAWSON, FLYNN,  
HERBERT, KENNEDY, LEICHHARDT  
and MARANOA**

Names and Boundaries of Existing Divisions **FLYNN**  
Names and Boundaries of Proposed Divisions **FLYNN**  
Names and Boundaries of Local Government Areas **WINTON**

LAMBERT CONIC PROJECTION WITH STANDARD PARALLELS 13° AND 25° S  
Sheet 1 of 4



**PROPOSED NAMES AND BOUNDARIES OF FEDERAL ELECTORAL  
DIVISIONS IN QUEENSLAND**

The Redistribution Committee for Queensland has made its proposed redistribution of the federal electoral divisions for Queensland. This map is one of a series of four that shows the boundaries and names of the proposed electoral divisions.

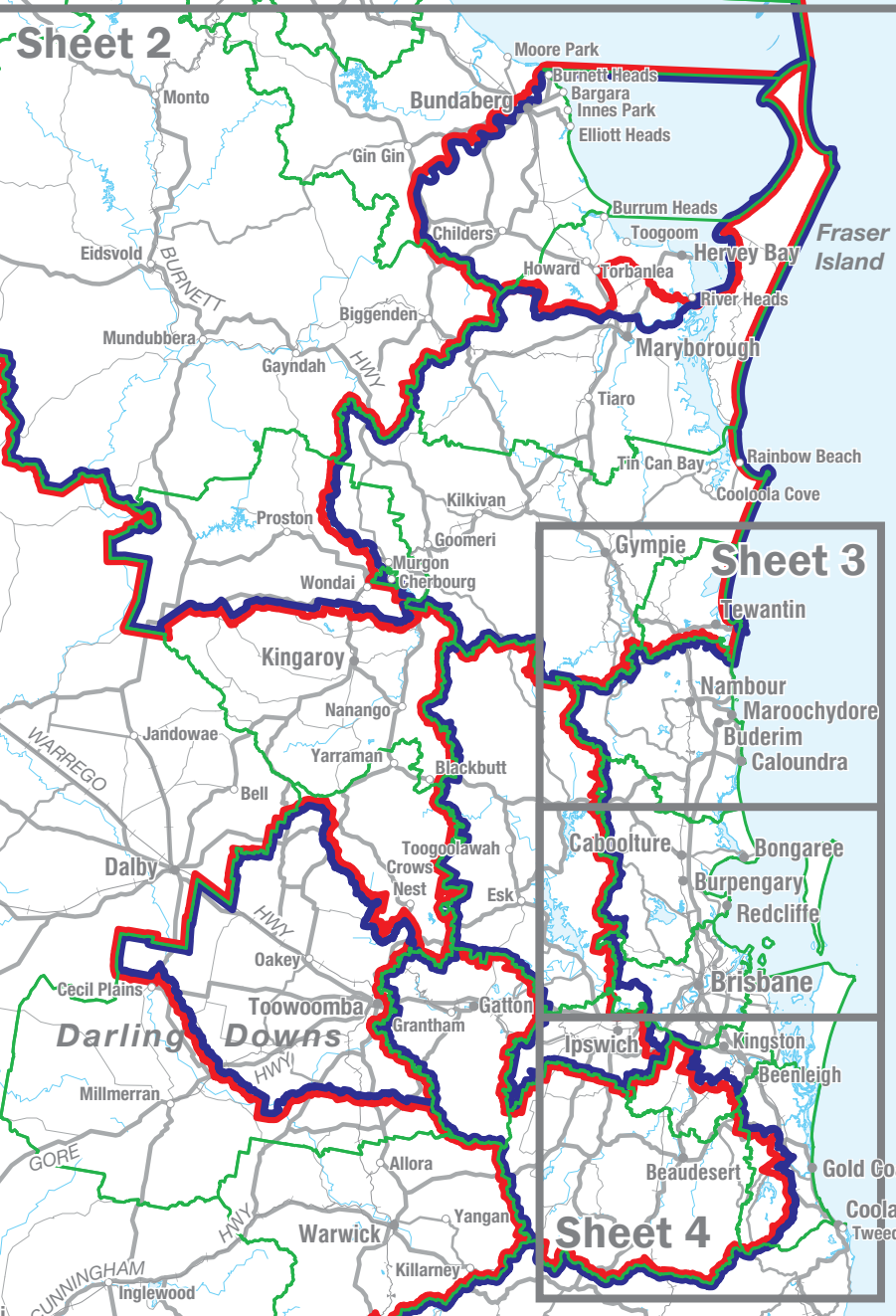
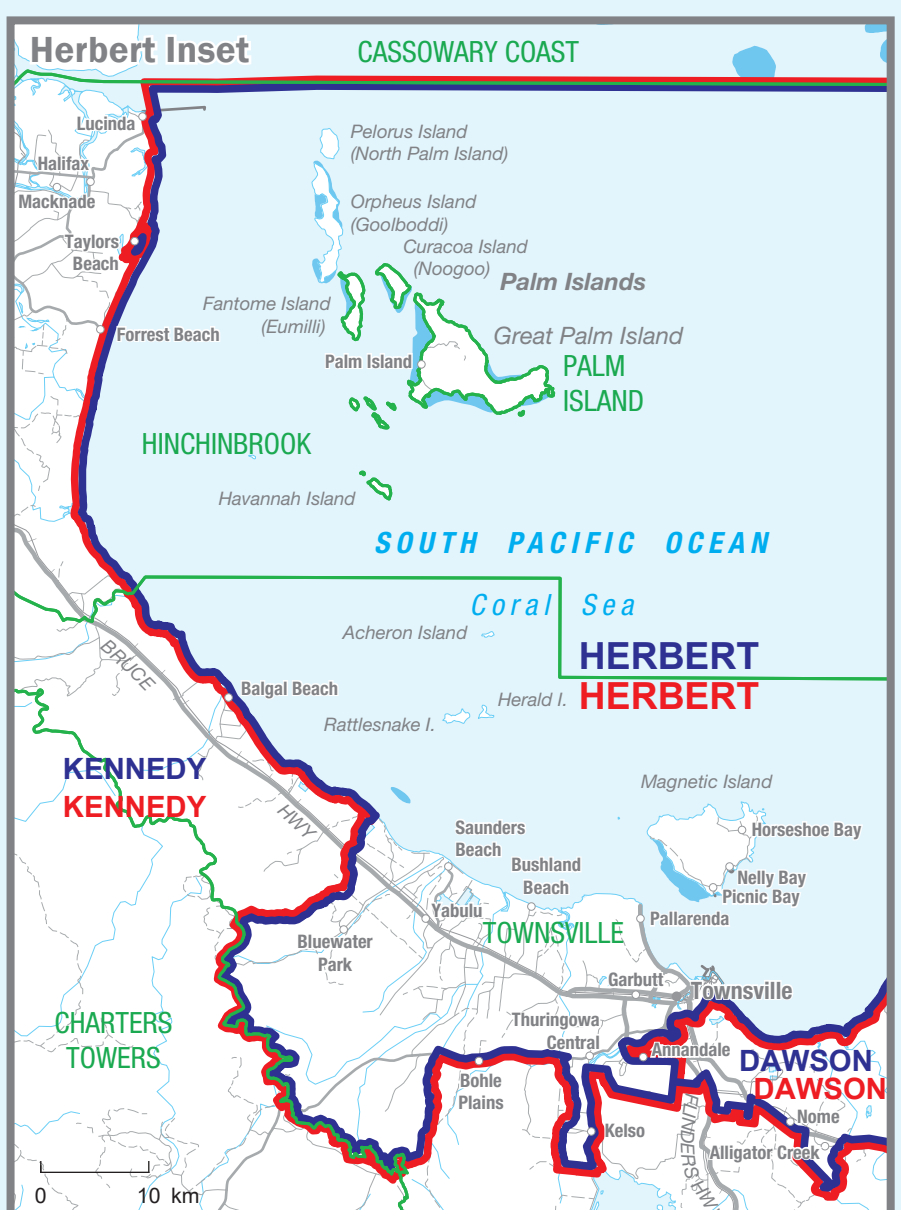
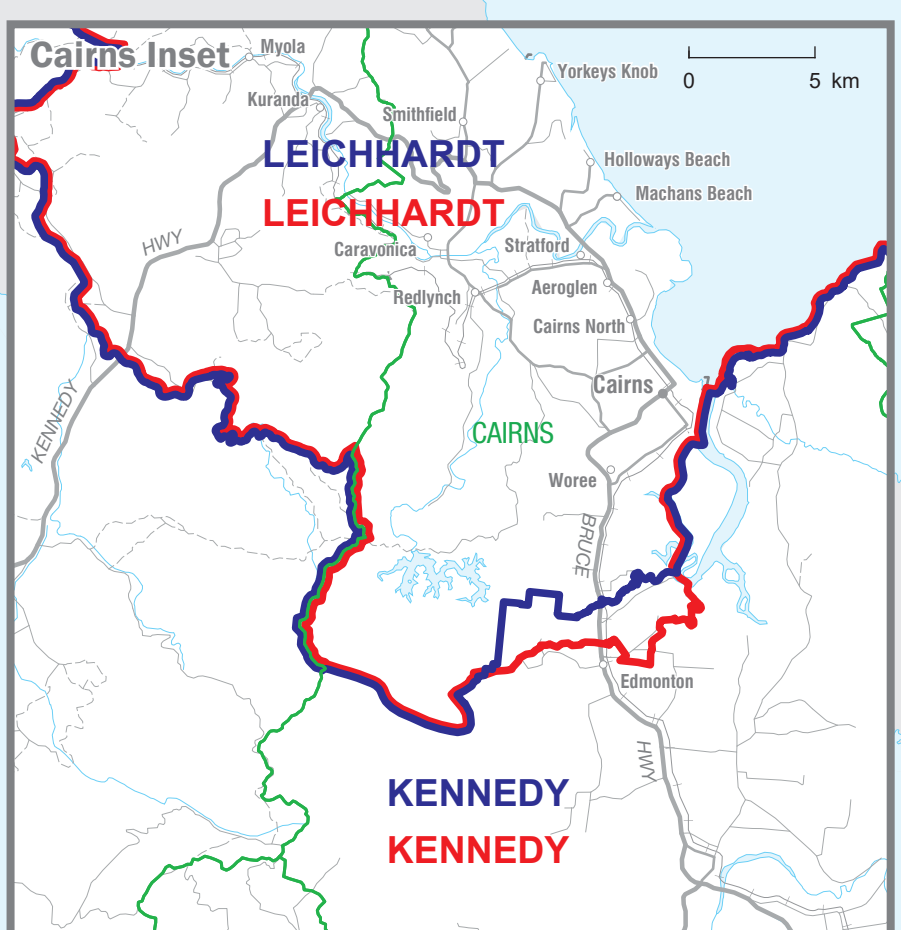
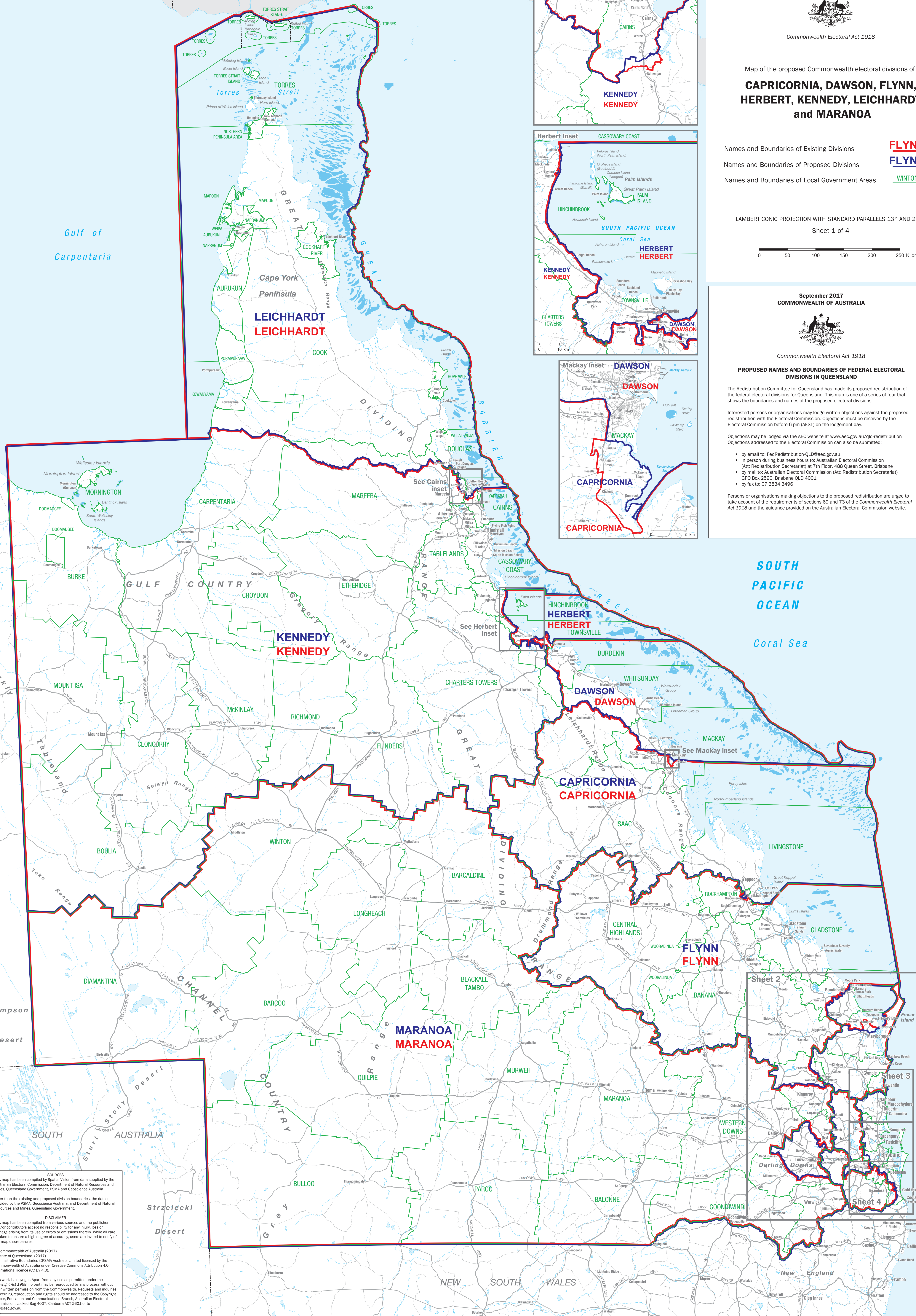
Interested persons or organisations may lodge written objections against the proposed redistribution with the Electoral Commission. Objections must be received by the Electoral Commission before 6 pm (AEST) on the lodgement day.

Objections may be lodged via the AEC website at [www.aec.gov.au/old/redistribution](http://www.aec.gov.au/old/redistribution). Objections addressed to the Electoral Commission can also be submitted:

- by email to: [FedRedistribution-QLD@aec.gov.au](mailto:FedRedistribution-QLD@aec.gov.au)
- in person during business hours to: Australian Electoral Commission (Att: Redistribution Secretariat) at 7th Floor, 488 Queen Street, Brisbane
- by mail to: Australian Electoral Commission (Att: Redistribution Secretariat) GPO Box 2590, Brisbane QLD 4001
- by fax to: 07 3834 3496

Persons or organisations making objections to the proposed redistribution are urged to take account of the requirements of sections 69 and 73 of the Commonwealth Electoral Act 1918 and the guidance provided on the Australian Electoral Commission website.

**SOUTH  
PACIFIC  
OCEAN**  
*Coral Sea*



**SOURCES**  
This map has been compiled by Spatial Vision from data supplied by the Australian Electoral Commission, Department of Natural Resources and Mines, Queensland Government, PSMA and Geoscience Australia.

**DISCLAIMER**  
Other than the existing and proposed division boundaries, the data is provided by the PSMA, Geoscience Australia, and Department of Natural Resources and Mines, Queensland Government.

**© Commonwealth of Australia (2017)  
© State of Queensland (2017)**  
Administrative Boundaries: SPMA Australia Limited licensed by the Commonwealth of Australia under Creative Commons Attribution 4.0 International licence (CC BY 4.0).

This work is copyright. Apart from any use as permitted under the Copyright Act 1968, no part may be reproduced by any process without prior written permission from the Commonwealth. Requests and inquiries concerning reproduction and rights should be addressed to the Copyright Officer, Education and Communications Branch, Australian Electoral Commission, Locked Bag 4007, Canberra ACT 2601 or to [info@aec.gov.au](mailto:info@aec.gov.au)