



THE FEDERAL  
REDISTRIBUTION  
QUEENSLAND

# Suggestion 22

Australian Labor Party

16 pages

# SUBMISSION for the 2017 Queensland Federal Redistribution

Australian  
Labor Party  
(State of  
Queensland)

## **Australian Labor Party**

Submission to

### **Australian Electoral Commission Redistribution of Federal Divisions in Queensland 2017**

## Introduction

The Australian Labor Party (State of Queensland) thanks the AEC for the opportunity to contribute to the 2017 redistribution of Federal Divisions in Queensland.

Unlike previous redistributions in Queensland, there is no change to the number of Divisions in Queensland, nor do the enrolment numbers for the 30 Divisions deviate significantly from the average enrolment for Queensland.

The ALP submits that the redistribution can be undertaken with limited changes to the Division boundaries established in 2009.

This submission provides a set of Division boundaries to meet the requirements of the *Commonwealth Electoral Act 1918*, while maintaining, and in some cases improving, the community of interest within Divisions. Where possible, this submission has proposed changes that would consolidate suburbs within one Division and use Local Government area boundaries as Divisional boundaries.

Set out below is the ALP proposal for regions in which changes are proposed to meet the requirements of the Act.

# Seat Analysis

## **Far North Queensland (Leichhardt and Kennedy)**

Leichhardt in 2021 will be 7.4% over quota. Therefore it is apparent there needs to be changes in the area, as Kennedy is the only electorate surrounding Leichhardt, all excess voters will need to be moved from there.

To offset the fact Leichhardt is over quota, and recognising that the Division of Kennedy is under quota we recommend moving Bentley Park into Kennedy. This would shift 5308 voters from Leichhardt to Kennedy (see Map 1). This change makes both Leichhardt and Kennedy within quota required under the act.

By moving Bentley Park into Kennedy, it makes a community of interest with a number of families utilising local roads as well as using the Bruce Highway when travelling into Cairns. They also share a number of government services with many families in Edmonton sending their children to school at Bentley Park College and Hambledon State School in Edmonton.

## **North Queensland (Herbert, Dawson and Capricornia)**

The ALP does not propose any change to the seat of Herbert as it is projected to be within the 3.5% quota tolerance in 2021.

Capricornia requires additional voters to ensure it meets the 2021 quota projections as required by the Act. In order to ensure the seat is within quota, it is suggested that Bakers Creek, McEwens Beach, Dunrock, part of Rosella, part of Chelona, and part of Balberra move from Dawson to Capricornia. This will add 1,178 projected voters to Capricornia, thus giving it a total projected enrolment of 106,572 (see Map 2).

This will add rural areas south of Mackay to the existing rural areas already in Capricornia, thus maintaining a community of interest.

## **Wide Bay-Burnett (Flynn, Hinkler and Wide Bay)**

While Flynn is low on the projected population, it is still within the tolerance levels. It is also expected to have higher than average population growth. As such, the ALP proposes no change to Flynn at this time.

Given Hinkler is slightly smaller than the projected population tolerance, it is proposed that the areas North of Maryborough be shifted to Hinkler, out of Wide Bay. Not much change is needed, so Maryborough can stay intact, within Wide Bay. (See Map 3)

### **Sunshine Coast (Fairfax, Fisher, Longman and Wide Bay)**

The linear juxtaposition of the four seats of Wide Bay, Fairfax, Fisher and Longman means that it is logical for voters in Fairfax (which is projected to be over quota in 2021) to be moved into Wide Bay. This is consistent with previous redistributions where Wide Bay has come into the northern reaches of the Sunshine Coast. Therefore it is suggested that the area of Doonan in Fairfax be added to Wide Bay, making a net change of 2,028 projected voters, ensuring both Wide Bay and Fairfax remain within the 2021 target (see Map 4).

The projected enrolment for Longman and continued strong expected population growth, combined with the low projected enrolment in Fisher, means that a transfer of projected voters between the two seats would satisfy the quota targets.

Therefore it is suggested that rural areas around Woodford, Mount Mee, Bellthorpe, D'Aguilar (see Map 5) be transferred to Fisher. This will link the rural area in the west of the Fisher electorate to the rural communities to the south, where there are strong social and employment communities of interest.

### **Brisbane North (Petrie, Dickson & Lilley)**

The Division of Lilley is nearly 5% over quota and growth is expected to continue to be consistent into the future, while it remains within the general rules of the AEC, ideally a small number of electors need to be transferred.

It is both our strong preference and the most logical outcome that an option of minimal change be taken.

The most logical areas that should be transferred are the most western areas of the electorate, this is in part because the only under quota neighbouring seat is Dickson on the west and also in large part because these are the suburbs with the least connection to the rest of the electorate and have been in the electorate for the shortest period.

The core of Lilley has long been the eastern bayside suburbs from Brighton down to Nudgee and neighbouring areas from Nundah through to Geebung and Zillmere, these areas along with the Chermside/Stafford area are a very strong foundation for a cohesive Federal Seat.

The suburbs in the west that are the most ideally placed to be partially shifted into Dickson are specifically parts of the suburbs of Everton Park, which has a shared community with suburbs outside of Lilley and Bridgeman Downs, which is already split between electorates and has loose ties to the rest of Lilley (see Map 6).

### **Brisbane Central (Brisbane and Ryan)**

Brisbane is required to lose electors to meet future quota requirements.

The proposal better meets community of interest.

Enoggera Army Barracks is the dominant employer in the area with a homogeneous community largely located in and around the barracks. Using Wardell Street and Samford Road brings this local ADF community together in the same division.

Continuing along Wardell St to Stewarts Rd is a natural development. It is physically one stretch of road. Together with Waterworks Rd, these are major roads that serve as well recognisable boundaries (see Map 7).

An area north of Samford Rd is returned to Brisbane from Ryan. This assists with meeting quota. This area has traditionally been in Brisbane and shares a close community of interest with areas to the east towards the city along major road and rail corridors, rather than suburbs to the south in Ryan.

### **Brisbane South (Bonner, Griffith, Moreton)**

Higher than average population growth in Griffith means it is required to shed voters to ensure it remains within the 2021 quota targets. Conversely, Moreton is expected to be below the 2021 quota targets and therefore it is logical that they exchange voters to ensure compliance with the Act.

Therefore it is suggested that the suburbs of Annerley and Tarragindi be reunited within the seat of Moreton to achieve the necessary quota with an additional 5,827 projected voters. This also extends the boundary along the Pacific Motorway (M3).

It is also suggested that the suburb of Murarrie be reunited, so that 1,646 projected voters in Bonner be moved to Griffith and the boundary be moved to the Gateway Motorway. This will bring together voters with a similar community of interest which is more closely linked to the Bulimba area (see Map 7).

To ensure that both Griffith and Bonner remain within 2021 quota targets, the suburb of Mount Gravatt East should be reunited into Bonner, where there is a greater community of interest (see Map 8).

### **South of Brisbane (Rankin, Oxley and Blair)**

The electorate of Oxley is currently 4.7% below quota and is therefore required to gain voters from neighbouring electorates. Blair and Rankin are both within quota and do not require change.

Previous redistributions by the AEC have seen Blair become an Ipswich-based seat with 84% of the population of Blair based in Ipswich. The heart of Blair is Ipswich and the very strong

community of interest (employment, commerce, health, education, sport and recreational) runs north-west along the Brisbane Valley Highway connecting Somerset regional towns such as Fernvale, Lowood, Esk and Toogoolawah with Ipswich.

Though Blair is on the lower side of the parameters of the quota set by the AEC, the electorate does not need to be altered on current and projected enrolments. The enrolment projection shows solid and above average growth. The Blair boundaries are well defined by Council and State Boundaries as well as topographical features like mountain ranges and state forests.

### **Logan and Gold Coast (Forde, Wright, Fadden, McPherson, Moncrieff)**

The continued high population growth in the Logan-Gold Coast corridor, particularly in the seat of Fadden, requires some boundary adjustments in this region.

Consistent with the position taken throughout this submission, it is proposed to base new Federal boundaries on existing local government boundaries, as much as possible.

Consequently, it is proposed to realign the seats that currently cross the Logan-Gold Coast City Council boundaries. The result would be that Forde would become a wholly Logan-based seat, with Wright adding to its existing share of the Gold Coast hinterland.

In practice, this would involve moving the suburbs of Logan Village, Yarrabilba, Stockleigh, North Maclean, Jimboomba, Cedar Grove, Woodhill, Veresdale Scrub, Kairabah and Mundoolun, from Wright to Forde.

In return, it is proposed to shift the Gold Coast suburbs of Ormeau, Ormeau Hills, Luscombe, Kingsholme, Cedar Creek, Willow Vale and Upper Coomera from Forde to Wright (see Map 9).

Fadden is over quota and is projected to remain so. The most logical solution is to move the majority of the suburb of Oxenford to Wright which, in combination with the changes to Forde suggested above and the existing boundaries of Wright, would leave that seat covering the entire Gold Coast hinterland (see Map 10).

In addition to the above changes, it is proposed to shift the suburb of Carbrook from Forde to Bowman. Bowman is slightly under quota, and while Carbrook is itself in the Logan local government area, it shares a strong community of interest with suburbs surrounding Redland Bay, which are in the electorate of Bowman (see Map 9).

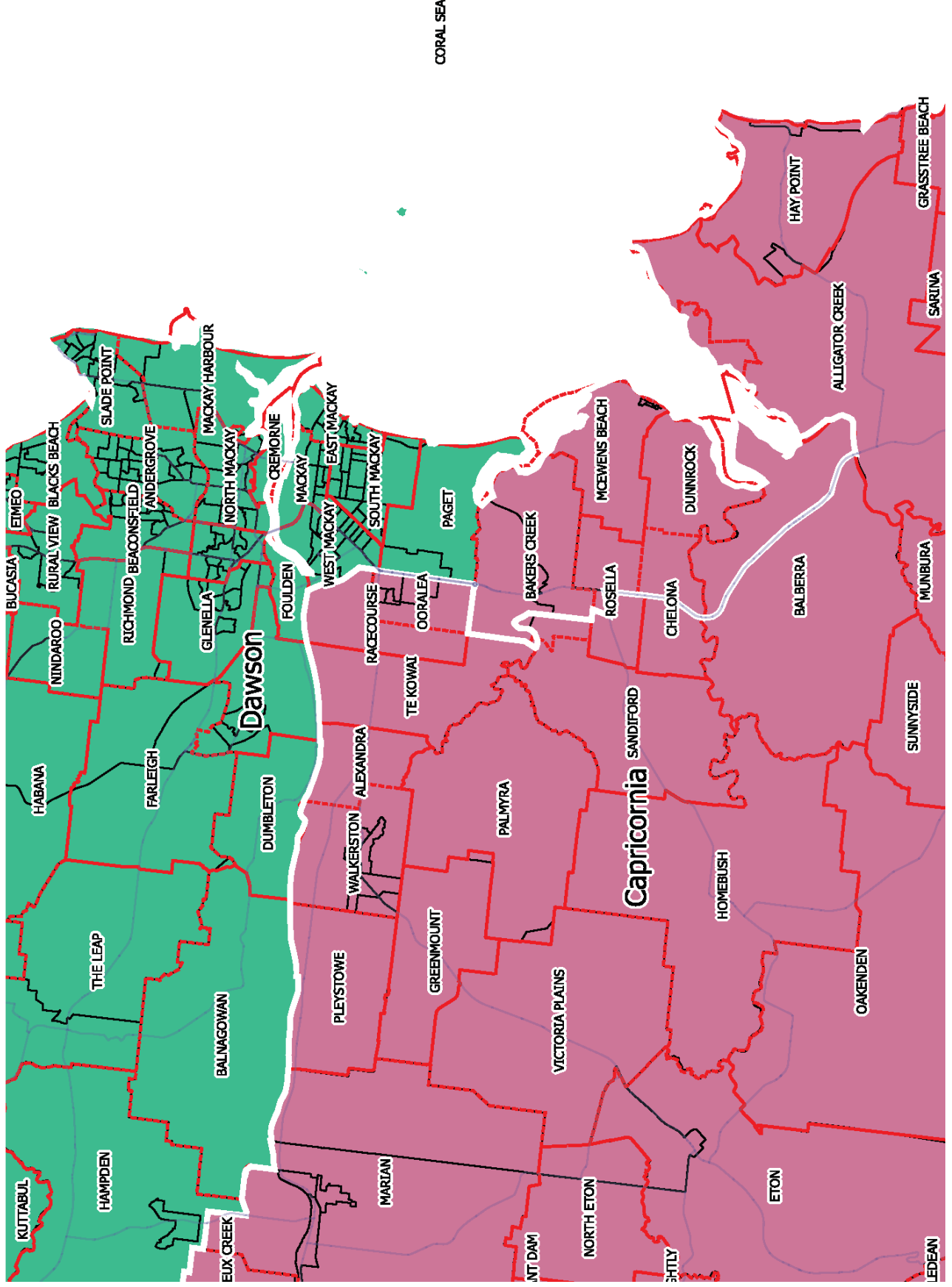
No change is proposed to either Moncrieff or McPherson, since they are, and are projected to remain, near quota.

# ALP Submission - Map 1 Kennedy/Leichhardt





# ALP Submission - Map 2 Capricornia/Dawson

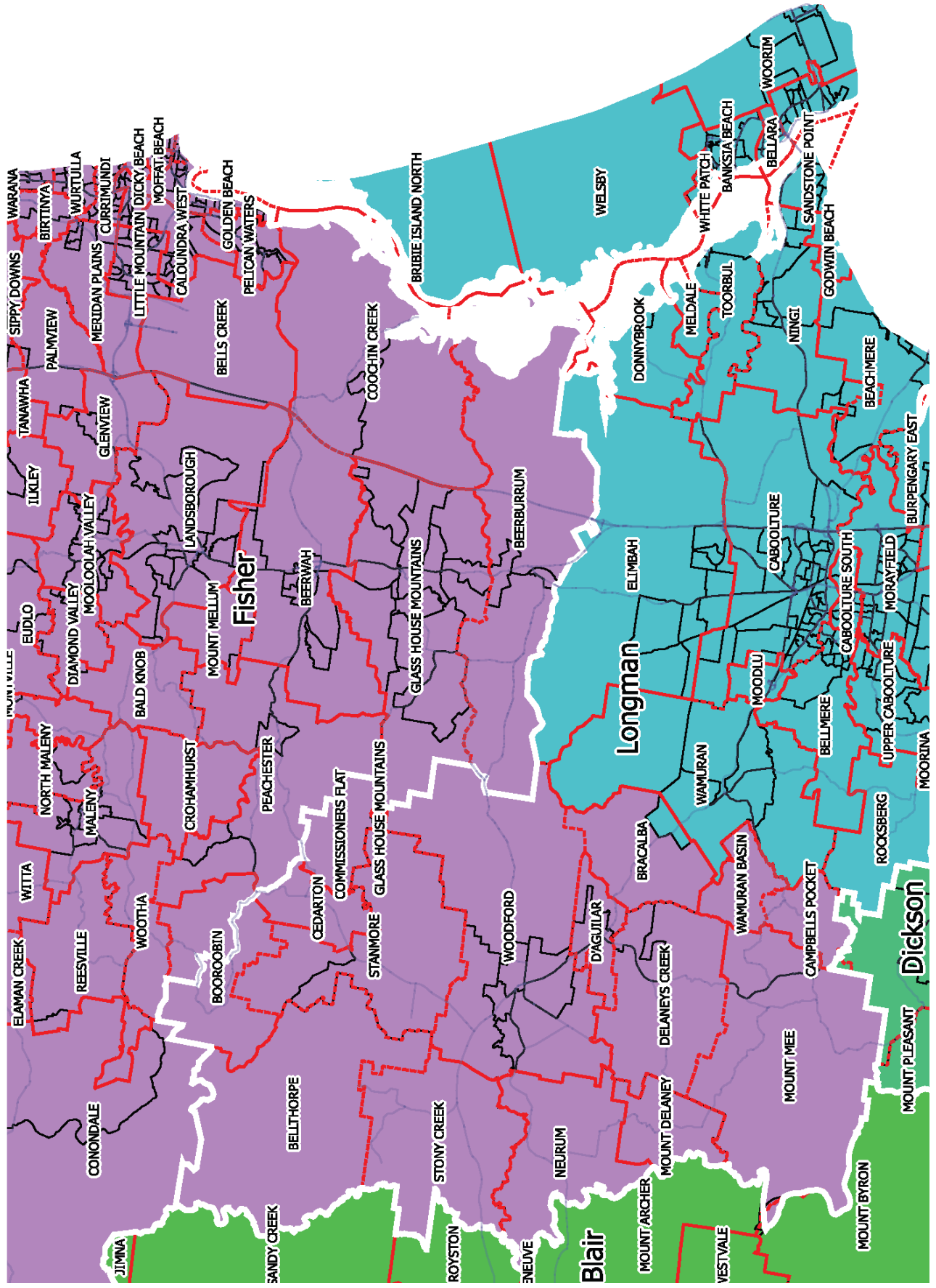






# ALP Submission - Map 5

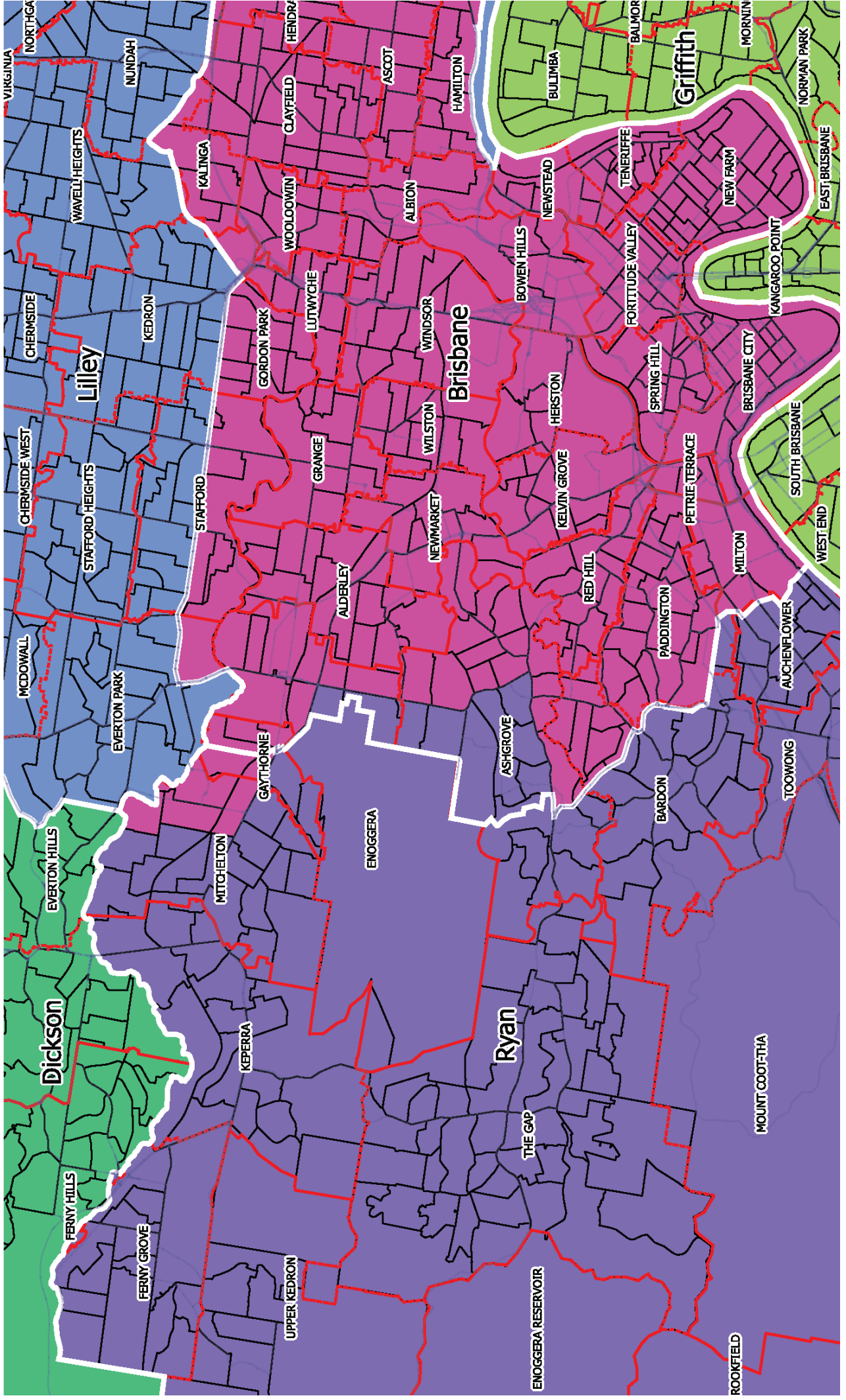
## Fisher/Longman



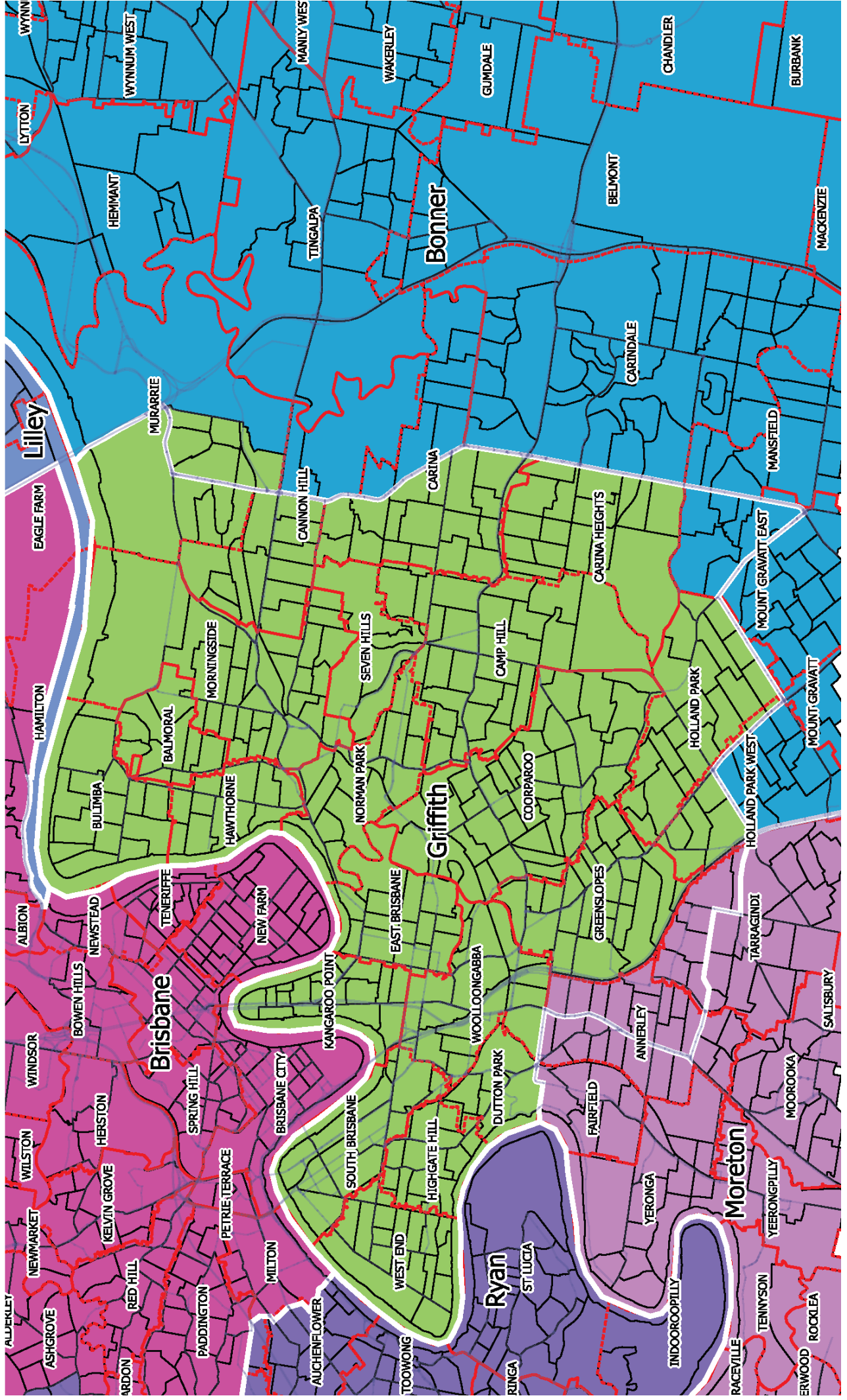




# ALP Submission - Map 7 Brisbane/Ryan



# ALP Submission - Map 7 Bonner/Griffith/Moreton









# ALP Submission - Map 10

## Fadden/Wright

