



THE FEDERAL
REDISTRIBUTION
QUEENSLAND

Suggestion 16

Liberal National Party

30 pages

19 May 2017

Queensland Federal Redistribution Committee
Australian Electoral Commission
7th Floor
488 Queen Street
BRISBANE QLD 4001



Dear Redistribution Committee

The Liberal National Party (LNP) responds to the Electoral Commissioner's invitation for written suggestions regarding the redistribution of federal electoral divisions for the House of Representatives in Queensland. The LNP submits options for the Redistribution Committee's consideration.

In formulating the submission, the LNP has endeavoured to comply with Section 66 of the Commonwealth Electoral Act 1918. The LNP has consulted widely with stakeholders to determine their views. Attachment 1 provides details on the proposed adjustments to the Queensland federal divisions. Maps of the proposed adjusted divisions are in Attachment 2.

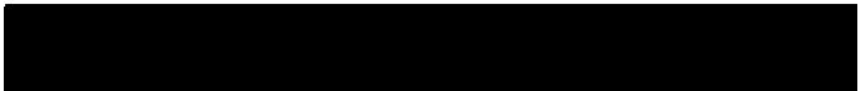
The proposed adjustments to the Federal divisions meet the numerical quota requirements as stipulated by the Australian Electoral Commission's (AEC) guidelines. In meeting these requirements, the underpinning principle is that as far as possible there should be minimal disruption to enrolments, with communities of interest maintained and improved to align with established social and economic connectivity.

The submission recommends six divisions remain unchanged – McPherson, Moncrieff, Wright, Bowman, Ryan and Blair.

The enrolment details provided by the AEC shows substantial growth pressures in northern Queensland, particularly for enrolments based on Cairns and Townsville. In addressing these challenges, where possible, the submission proposes improved community outcomes. The challenges presented by this growth is recognised coupled with its inevitable and sometimes unwelcome impacts on regional communities.

In central and south-western Queensland, the submission relies on the principle of improved communities of interest aligned with transport, communication and socio-economic linkages across these divisions.

In south-east Queensland, minimal adjustments are proposed to meet the required criteria to balance areas of growth, while delivering improved community outcomes.



The LNP thanks the AEC for its professional and courteous assistance in resolving an issue with the released enrolment data. Thank you for considering the options set out in this submission.

Yours sincerely



MICHEAL O'DWYER
LNP State Director

Encl:

Attachment 1 – LNP PROPOSAL FOR THE REDISTRIBUTION OF QUEENSLAND
DIVISIONS OF THE HOUSE OF REPRESENTATIVES.

Attachment 2 – DIVISIONAL MAPS.

ATTACHMENT 1
LNP PROPOSAL FOR THE REDISTRIBUTION OF QUEENSLAND DIVISIONS OF THE HOUSE OF REPRESENTATIVES

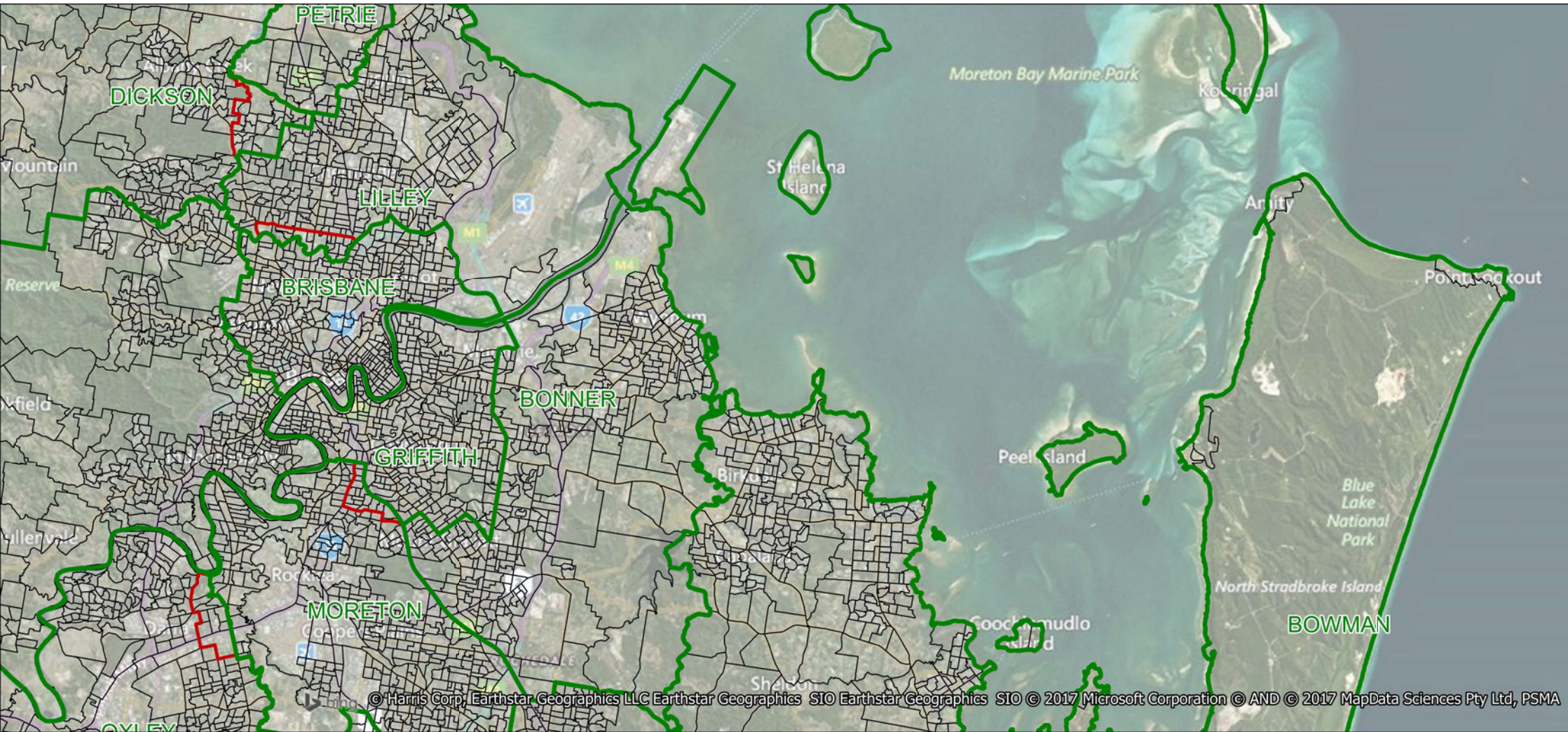
SEAT	Current	Projected	Final Current	Final Projected	SA1's split	Notional SA1 impact	Description	Rationale
HERBERT	105077	113235	102532	110506			Current boundary except: - includes from Kennedy the northern section of Townsville City Council and Rangewood to the west and to the south excludes to Dawson south of the Ross River.	Herbert is at the top of the allowed projected enrolment quota. Due to this growth in Townsville it is proposed to utilise the clear natural feature of the Ross River as the southern boundary between the divisions of Herbert and Dawson. To improve the community of interest outcome, Alice River and Rangewood enrolments are transferred from the division of Kennedy to the division of Herbert. It is proposed to extend the division of Herbert to the joint Townsville City and Hinchinbrook Shire Council boundary.
HINKLER	101482	105850	106630	111223	3150319 split at Boyne River	Maranoa to notionally receive 30 actual and projected enrolment, Hinkler to receive balance 150 actual and 153 projected.	Current boundaries except: - to west include from Flynn Mundubbera, Gayndah & Biggenden to Boyne River and the North/South Burnett Council boundary. - to north include from Flynn Oakwood & Gooburrum.	Hinkler is below the required projected enrolment quota. To better align regional communities of interest it is proposed Mundubbera and Gayndah be transferred to the division of Hinkler as they have strong community, economic and transport linkages to Bundaberg. It is also proposed to include Oakwood and Gooburrum with their community of interest of Bundaberg in the division of Hinkler.
KENNEDY	100404	106359	104400	110672			Current boundaries except: - to the north includes from Leichhardt Cape York and the Douglas Shire Council. - to the east excludes to Leichhardt southern part of Cairns City Council. Excludes to Herbert the northern section of Townsville City Council and Rangewood. Excludes Mount Stuart to Dawson. - to the south includes Collinsville and its surrounds from Capricornia and excludes to Flynn Boulia Shire Council.	Leichhardt exceeds the required projected quota, due to growth in the Cairns area, necessitating an adjustment with Kennedy. Cairns Regional Council forms the natural boundary that meets the required enrolment. In addition, Kuranda's strong connections to Cairns through its socio-economic interests requires that it be included in a division with Cairns. This outcome results in enrolments from the Cape York communities and the Douglas Shire being transferred to the division of Kennedy. It is proposed to extend the division of Herbert to the Townsville City and Hinchinbrook Shire Council boundary. To improve the community of interest outcome, Alice River and Rangewood enrolments are transferred from the division of Kennedy to the division of Herbert, and transfer the Mount Stuart enrolments to the division of Dawson. Collinsville lacks community of interest and is without established transport and communication linkages with the division of Capricornia. It is proposed it be transferred to the division of Kennedy, aligning it with communities with similar inland characteristics. Boulia Shire Council works closely with its Central Western shire neighbours as a member of the Remote Area Planning and Development Board. It is proposed to better unite this region by transferring Boulia Shire to the division of Flynn.
LEICHHARDT	109913	118266	103357	111089			Cairns Regional Council plus the Kuranda locality to the current Leichhardt division boundary.	Leichhardt exceeds the required projected quota, due to growth in the Cairns area, necessitating an adjustment with Kennedy. Cairns Regional Council forms the natural boundary that meets the required enrolment. In addition, Kuranda's strong connections to Cairns through its socio-economic interests requires that it be included in a division with Cairns. This outcome results in enrolments from the Cape York communities and the Douglas Shire being transferred to the division of Kennedy.
LILLEY	107162	114595	103962	111403			Current boundaries except: - to south include from Brisbane north of Kedron Brook at Stafford & Gordon Park. - to west exclude to Dickson Bridgman Downs and Aspley west of Maundell Tce, Horn Rd, Trouts Rd and Hamilton Road.	As Brisbane exceeds the required projected quota it is proposed to transfer enrolments north of Kedron Brook to the division of Lilley. This enables the Stafford community of interest to be united and resolves the only exception of Kedron Brook being a consistent boundary across number of Brisbane divisions. As a consequence, Lilley is required to lose enrolments. It is proposed to reunite the Bridgeman Downs to enable an improved community of interest in the division of Dickson.
LONGMAN	106098	112971	105949	112934			Current boundaries except: - to south include from Dickson north of Anzac Ave and Narangba Rd to the railway line to current boundary. - to north exclude to Fisher Woodford from eastern boundary of SA1s 3137113 & 3137114.	To better define the southern boundary and to provide an improved alignment of community interests, it is proposed to utilise Anzac Avenue and Narangba Rd as the proposed boundary between the divisions of Longman and Dickson. To enhance the tourism and environmental synergies in the Glass House Mountain area, representations have been made to unite Stanley Valley enrolments by transferring D'Aguliar, Woodford, Stanmore, Bellthorpe & Cedarton and their surrounds to the division of Fisher. This area has strong transport connections to the coast and Caloundra.
McPHERSON	104405	110478	104405	110478			No adjustment recommended	McPherson is within the required numerical quotas and has an established community of interest therefore no alteration is recommended.
MARANOA	103151	109197	102427	108474	3150319 split at Boyne River	Maranoa to notionally receive 30 actual and projected enrolment, Hinkler to receive balance 150 actual and 153 projected.	Current boundaries except: - to east to exclude to Groom Cooyar, Mount Binga, Cherry Creek south including Crows Nest. - to east include Murgon from Wide Bay and Wondai and Durong from Flynn. - to south include from Groom Pittsworth, Ramsay, Ascot, Brookstead, Bongeen, Formartin & Grassdale. - to north exclude to Flynn from north boundaries of Diamantina, Barcoo, Quilpie and Murweh Councils to current boundary.	There is strong east-west commercial, transport, social and communication connectivity across Central Queensland. It is proposed to align with this community of interest by uniting Boulia, Winton, Longreach, Barcaldine and Blackall/Tambo Councils in the division of Flynn. In the South Burnett area, Wondai, Kingaroy and Murgon share a community of interest and therefore it is proposed to unite them in the division of Maranoa. Current boundaries isolate the community of Crows Nest. Therefore it is proposed to transfer enrolments from Cooyar and Mount Binga south to Crows Nest to the division of Groom. The inclusion of Crows Nest in Groom requires some Darling Downs communities to be transferred to Maranoa with which they share a community of interest.
MONCRIEFF	103327	108715	103327	108715			No adjustment recommended	Moncrieff is within the required numerical quotas and has an established community of interest therefore no alteration is recommended.
MORETON	97318	105279	99496	107874	3127511 split at Blunder Road	Industrial area - notionally 0 to Moreton and 8 actual and 9 projected enrolments to Oxley	Current boundaries except: - to north gain from Griffith east on Cornwall St to Pacific Motorway south to current boundary on Marshall Rd. - to west lose to Oxley west of Blunder Rd/Oxley Rd /Oxley Station Rd, Seventeen Mile Rocks Rd to exclude SA1 3127503 to Brisbane River.	As Griffith exceeds the required projected quota and Moreton requires augmentation it is proposed to transfer the enrolments west of the Pacific Motorway to Cornwall St to the division of Moreton. This will allow the majority of the suburb Oxley to supplement enrolments of the division of Oxley as it is under the required projected quota.
OXLEY	96148	104943	99142	108175	3127511 split at Blunder Road	Industrial area - notionally 0 to Moreton and 8 actual and 9 projected enrolments to Oxley	Current boundaries except: - to east include from Moreton west of Blunder Rd, Oxley Rd, Oxley Station Rd, Seventeen Mile Rocks Rd to include SA1 3127503 to Brisbane River	Oxley is under the required projected quota. It is proposed, therefore, to unite the majority of the suburb of Oxley into the division of Oxley from the division of Moreton.

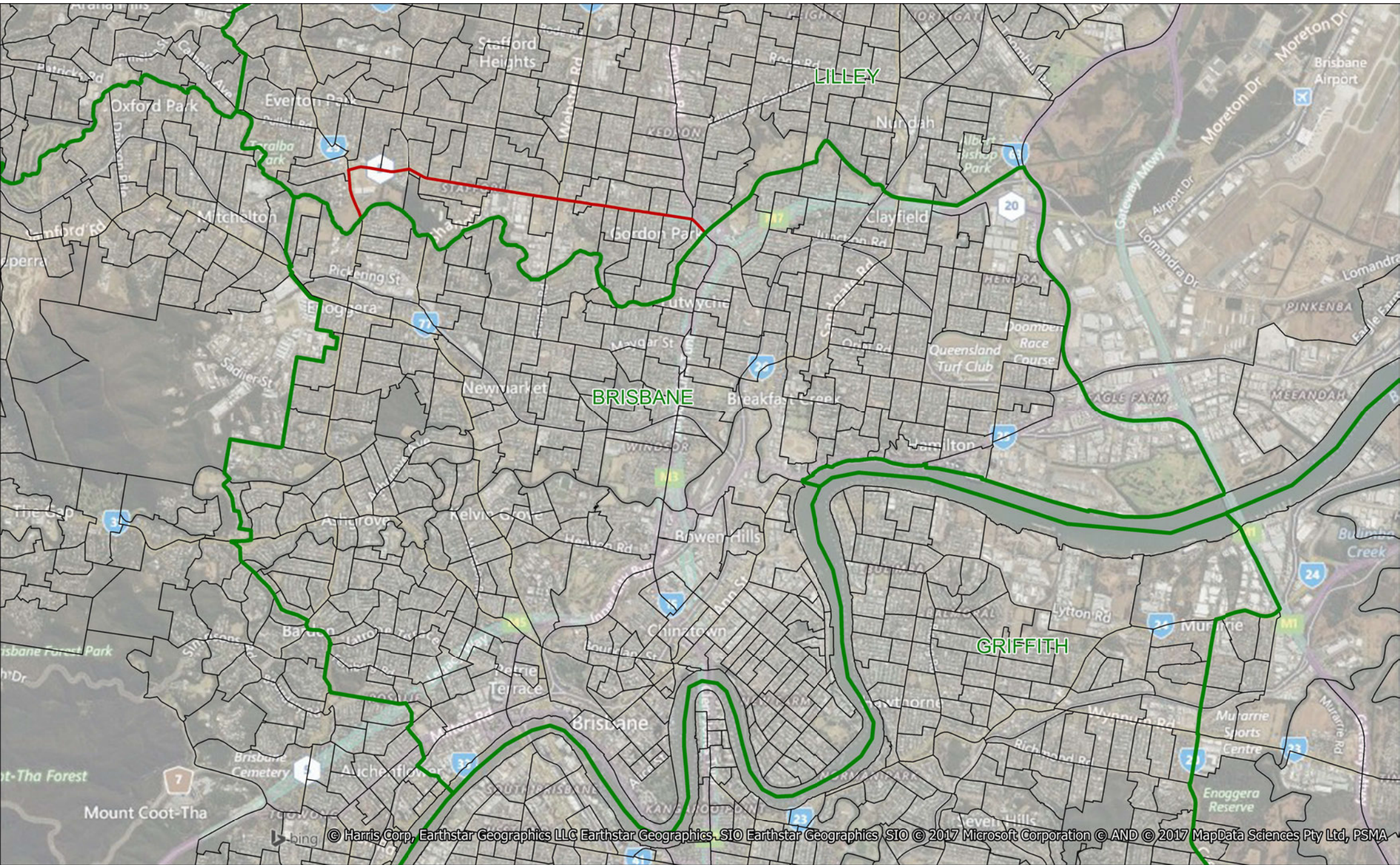
ATTACHMENT 1
LNP PROPOSAL FOR THE REDISTRIBUTION OF QUEENSLAND DIVISIONS OF THE HOUSE OF REPRESENTATIVES

SEAT	Current	Projected	Final Current	Final Projected	SA1's split	Notional SA1 impact	Description	Rationale
PETRIE	106757	113340	106910	113482			Current boundaries except: - include Moreton Island from Bonner.	Petrie is within the required numerical quotas. However, stakeholders have indicated that Moreton Island has closer commercial and social connections to the division of Petrie than the division of Bonner, and therefore it is recommended Moreton Island is transferred from Bonner to Petrie.
RANKIN	102349	111658	104235	113725	3131304 split at Bayes Rd, 3132812 split at Logan Reserve Rd	3131304 Rankin to notionally receive 40 actual and projected enrolment, Forde to receive balance 782 actual and 801 projected. 3132812 Forde to notionally receive 100 actual and projected enrolment, Rankin to receive balance 232 actual and 253 projected.	Current boundaries except include from Forde from Kingston Rd south on Logan Reserve Rd, west on Bayes Rd to current boundary at Chambers Flat Rd.	It is proposed to transfer enrolments west of Logan Reserve Rd from the division of Forde in order to improve community connectivity in the Marsden/Waterford West area.
RYAN	104543	111324	104543	111324			No adjustment recommended	Ryan is within the required numerical quotas and has an established community of interest therefore no alteration is recommended.
WIDE BAY	103780	108219	102597	106820			Current boundaries except to the west Murgon is excluded to Maranoa and Proston is included from Flynn to follow the North/South Burnett Council boundary back to current boundary.	In the South Burnett area, Wondai, Kingaroy and Murgon share a community of interest, but are located in three separate divisions. It is proposed to unite them in the division of Maranoa. The community of Proston is transferred to the division of Wide Bay.
WRIGHT	102234	109551	102234	109551			No adjustment recommended	Wright is within the required numerical quotas and has an established community of interest therefore no alteration is recommended.

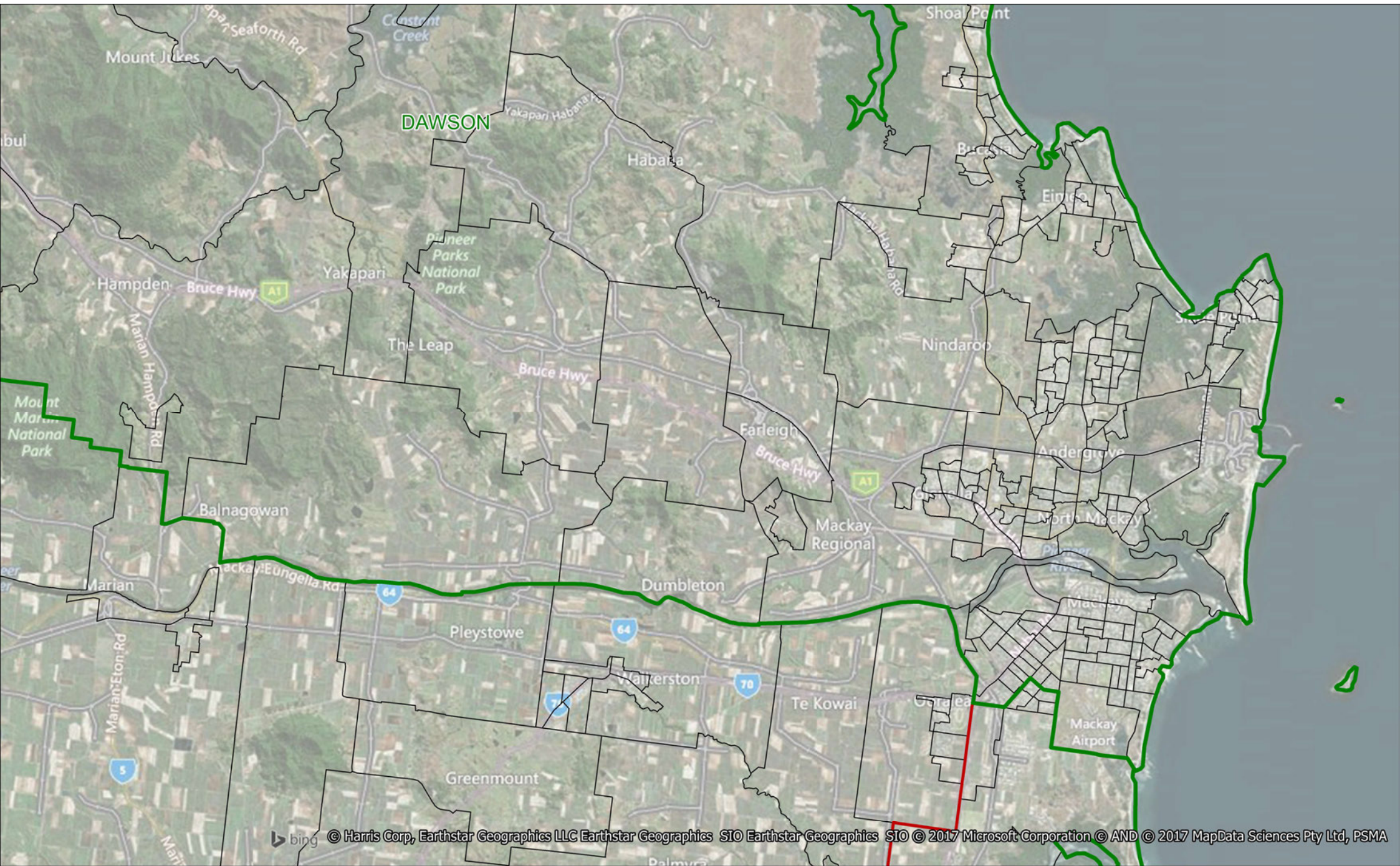
ATTACHMENT 1
LNP PROPOSAL FOR THE REDISTRIBUTION OF QUEENSLAND DIVISIONS OF THE HOUSE OF REPRESENTATIVES

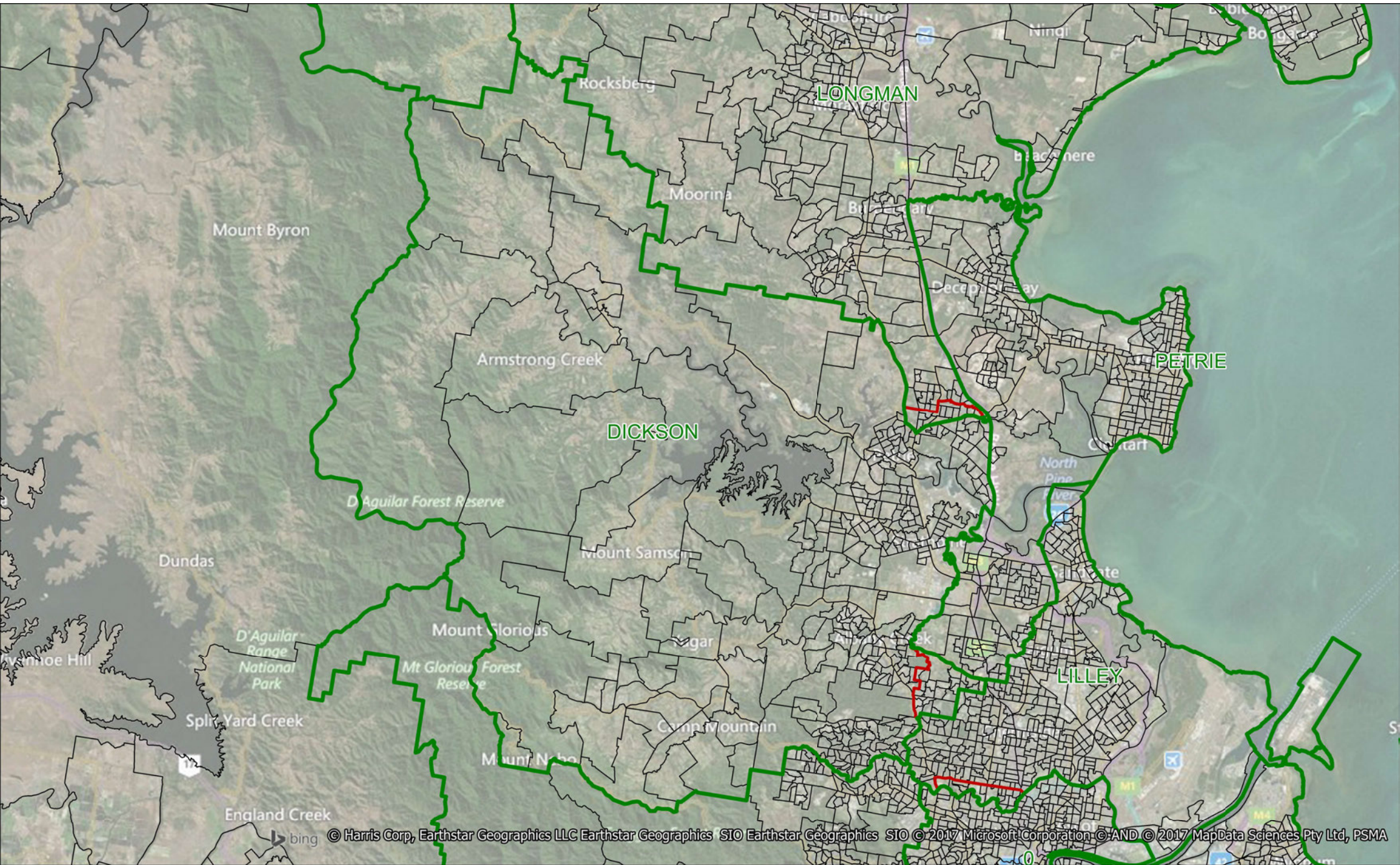
SEAT	Current	Projected	Final Current	Final Projected	SA1's split	Notional SA1 impact	Description	Rationale
BLAIR	99942	107316	99942	107316			No adjustment recommended	Blair is within the required numerical quotas and has an established community of interest therefore no alteration is recommended.
BONNER	100770	107808	100617	107650			Current boundaries except: - Moreton Island transferred to Petrie	Bonner is within the required numerical quotas. However, stakeholders have indicated that Moreton Island has closer commercial and social connections to the division of Petrie, and therefore it is recommended Moreton Island is transferred from Bonner to Petrie.
BOWMAN	104241	109932	104241	109932			No adjustment recommended	Bowman is within the required numerical quotas and has an established community of interest therefore no alteration is recommended.
BRISBANE	108157	115380	104013	110870			Current boundaries except: - to north exclude to Lilley north of Kedron Brook at Stafford & Gordon Park	As Brisbane exceeds the required projected quota it is proposed to transfer enrolments north of Kedron Brook to the division of Lilley. This enables the Stafford community of interest to be united and resolves the only exception of Kedron Brook being a consistent boundary across number of Brisbane divisions.
CAPRICORNIA	98847	105394	99990	106600			Current boundaries except: - to the north exclude Collinsville and its surrounds to Kennedy - In south Mackay include north to Archibald St, Paradise St, Graffunder St, Milton St and Boundary Rd to the coast from Dawson.	Capricornia is under the required projected enrolment quota. It is necessary therefore that areas south of the Mackay Airport be transferred from the division of Dawson to the division of Capricornia. Collinsville lacks community of interest and is without established transport and communication linkages with the division of Capricornia. It is proposed it be transferred to the division of Kennedy, aligning it with communities with similar inland characteristics.
DAWSON	103910	110655	106789	113801			Current boundaries except: - to the north include from to the Ross River Herbert and Mount Stuart from Kennedy. - to the south exclude to Capricornia south of Archibald St, Paradise St, Graffunder St, Milton St and Boundary Rd to the coast.	Herbert is at the top of the allowed projected enrolment quota. Due to this growth in Townsville it is proposed to utilise the clear natural feature of the Ross River as the boundary between the divisions of Herbert and Dawson. Capricornia is under the required projected enrolment quota. It is necessary therefore that areas south of the Mackay Airport be transferred from the division of Dawson to the division of Capricornia.
DICKSON	100974	109330	104054	112369			Current boundaries except: - to east include from Lilley Bridgeman Downs west of Maundell Tce, Horn Rd, Trouts Rd and Hamilton Road. - to north exclude to Longman north of Anzac Ave and Narangba Rd to the railway line to current boundary.	It is proposed to reunite the Bridgeman Downs to enable an improved community of interest in the division of Dickson. To better define the northern boundary and to provide an improved alignment of community interests, it is proposed to utilise Anzac Avenue and Narangba Rd as the proposed boundary between the divisions of Longman and Dickson.
FADDEN	107071	114465	104165	111345			Current boundaries except: - to north exclude to Forde areas north of the Pimpama River and SA1s 3125534, 3125533, 3125532, 315525 & 3125523.	Fadden exceeds the required projected quota. To unite communities of interest with social and commercial centers, it is proposed to transfer north of the Pimpama River and from south the Ormeau Reserve to the division of Forde.
FAIRFAX	109152	115329	105585	111602			Current boundaries except to south exclude to Fisher Mountain Creek south of Sunshine Motorway.	As Fairfax exceeds and Fisher is below the required projected quota, enrolments south of the Sunshine Motorway in the Mountain View area should be transferred from the division of Fairfax to the division of Fisher.
FISHER	99528	104427	107508	112854			Current boundaries except: - to south include from Longman Woodford from eastern boundary of SA1s 3137113 & 3137114. - to north include from Fairfax Mountain Creek south of Sunshine Motorway.	As Fairfax exceeds and Fisher is below the required projected quota, enrolments south of the Sunshine Motorway in the Mountain View area should be transferred from the division of Fairfax to the division of Fisher. To enhance the tourism and environmental synergies in the Glass House Mountain area, representations have been made to unite Stanley Valley enrolments by transferring D'Aguilar, Woodford, Stanmore, Bellthorpe & Cedarton and their surrounds to the division of Fisher. This area has strong transport connections to the coast and Caloundra.
FLYNN	100236	104427	98910	106273			Current boundaries except: - to south exclude to Hinkler Mundubbera, Gayndah & Biggenden and exclude Wondai and Durong to Maranoa. - to south include from Flynn Oakwood & Gooburrum. - to west include from Maranoa Blackall/Tambo, Barcaldine, Winton and Longreach councils and Boulia Council from Kennedy.	Hinkler is below the required projected enrolment quota. To better align regional communities of interest it is proposed Mundubbera and Gayndah be transferred to the division of Hinkler as they have strong community, economic and transport linkages to Bundaberg. In the South Burnett area, Wondai, Kingaroy and Murgon share a community of interest and therefore it is proposed to unite them in the division of Maranoa. It is also proposed to include Oakwood and Gooburrum with their community of interest of Bundaberg in the division of Hinkler. There is strong east-west commercial, transport, social and communication connectivity across Central Queensland. It is proposed to align with this community of interest by uniting Boulia, Winton, Longreach, Barcaldine and Blackall/Tambo Councils in the division of Flynn. Boulia Shire Council works closely with its Central Western shire neighbours as a member of the Remote Area Planning and Development Board. It is proposed to better unite this region by transferring Boulia Shire to the division of Flynn.
FORDE	100120	108502	100318	108710	3131304 Rankin to notionally receive 40 actual and projected enrolment, Forde to receive balance 782 actual and 801 projected. 3132812 Forde to notionally receive 100 actual and projected enrolment, Rankin to receive balance 232 actual and 253 projected.	3131304 split at Bayes Rd, 3132812 split at Logan Reserve Rd	Current boundaries except: - to north exclude to Rankin from Kingston Rd south on Logan Reserve Rd, west on Bayes Rd to current boundary at Chambers Flat Rd. - east north include from Fadden areas north of the Pimpama River and SA1s 3125534, 3125533, 3125532, 315525 & 3125523.	Fadden exceeds the required projected quota. To unite communities of interest with social and commercial centers, it is proposed to transfer north of the Pimpama River and from south the Ormeau Reserve to the division of Forde. It is proposed to transfer enrolments west of Logan Reserve Rd to the division of Rankin in order to improve community connectivity in the Marsden/Waterford West area.
GRIFFITH	106999	115269	101827	109442			Current boundaries except: - to south gain from Moreton east on Cornwall St to Pacific Motorway south to current boundary at Marshall Rd.	As Griffith exceeds the required projected quota and Moreton requires augmentation it is proposed to transfer the enrolments west of the Pacific Motorway to Cornwall St to the division of Moreton.
GROOM	102009	108463	100357	106720			Current boundaries except: - to east to include from Maranoa Cooyar, Mount Binga, Cherry Creek south including Crows Nest. - to south exclude to Maranoa Pittsworth, Ramsay, Ascot, Brookstead, Bongeen, Formartin & Grassdale.	Current boundaries isolate the community of Crows Nest. Therefore it is proposed to transfer enrolments from Cooyar and Mount Binga south to Crows Nest from the division of Maranoa. The inclusion of Crows Nest in Groom requires some Darling Downs communities to be transferred to Maranoa with which they share a community of interest.

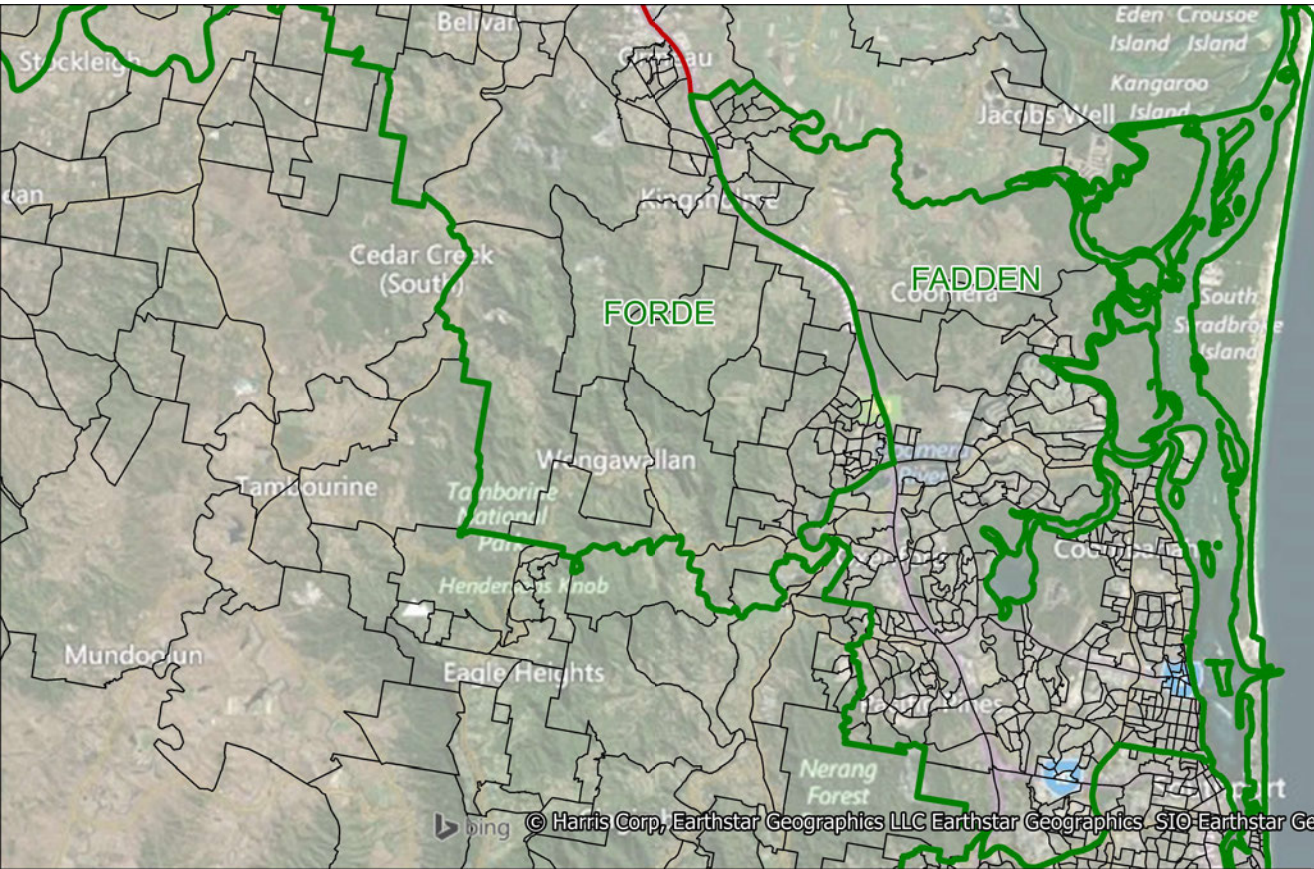






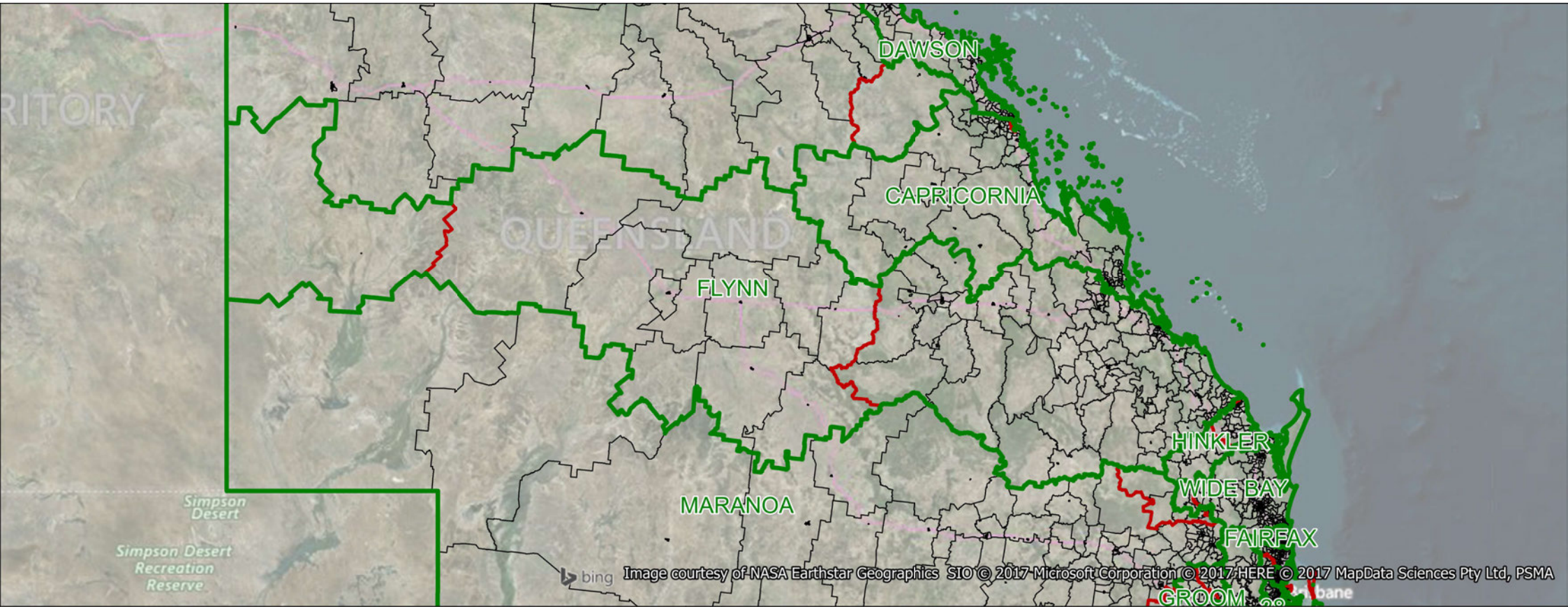


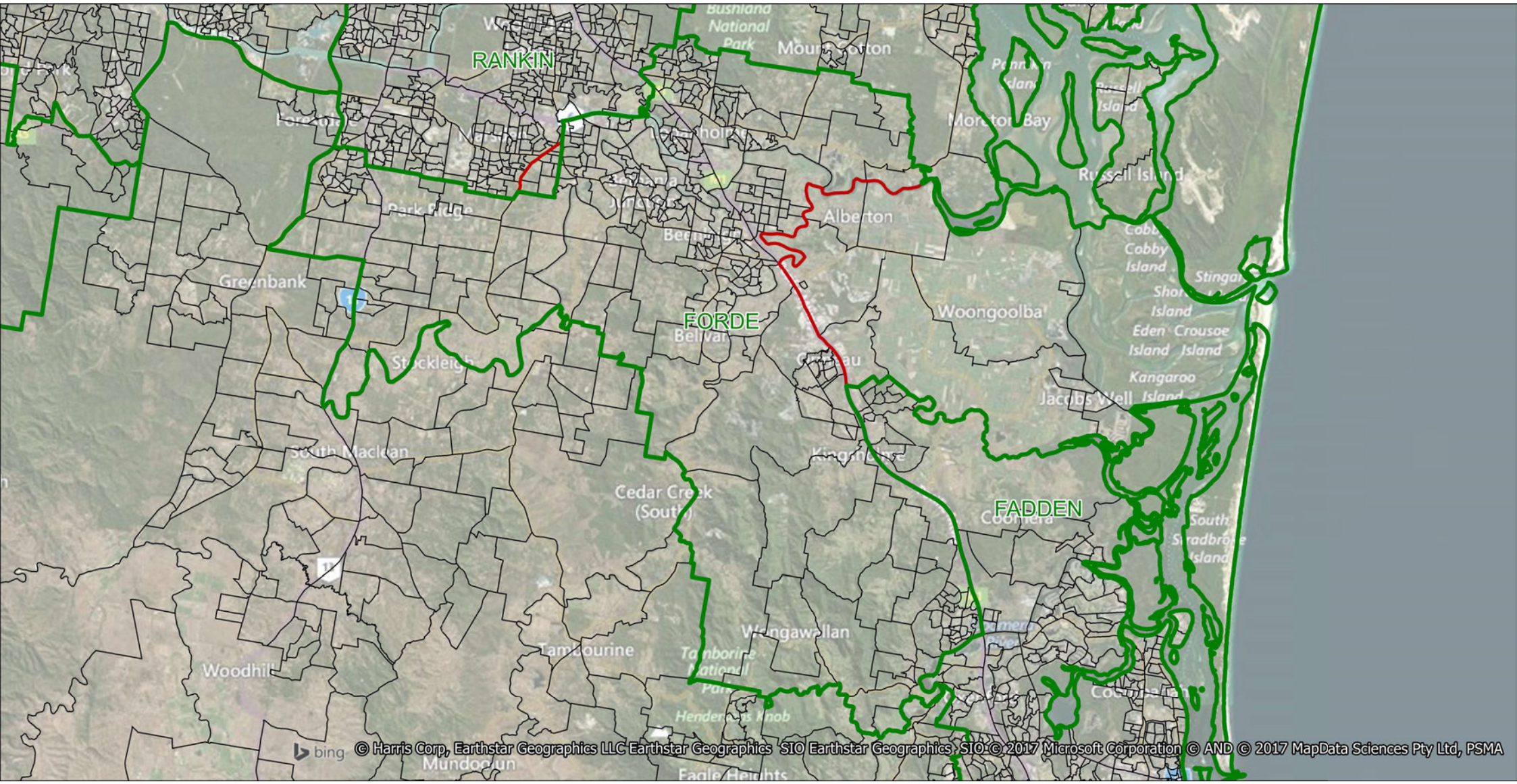


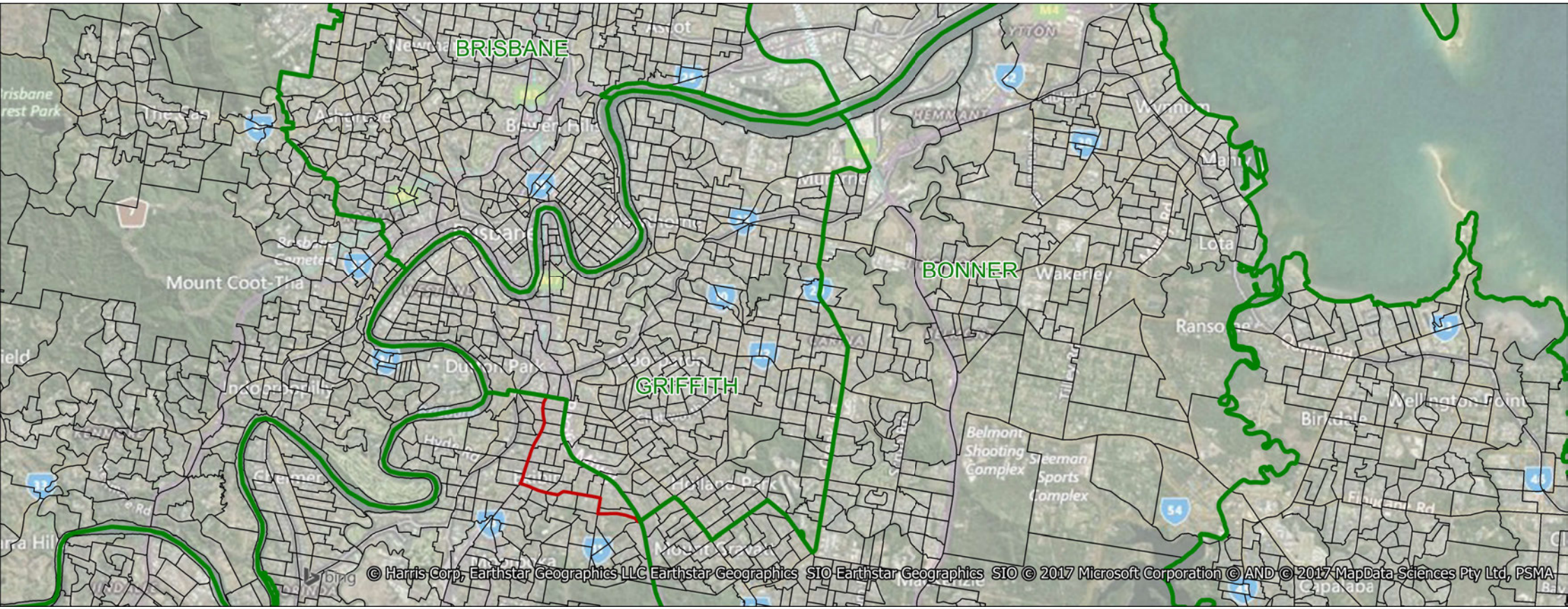


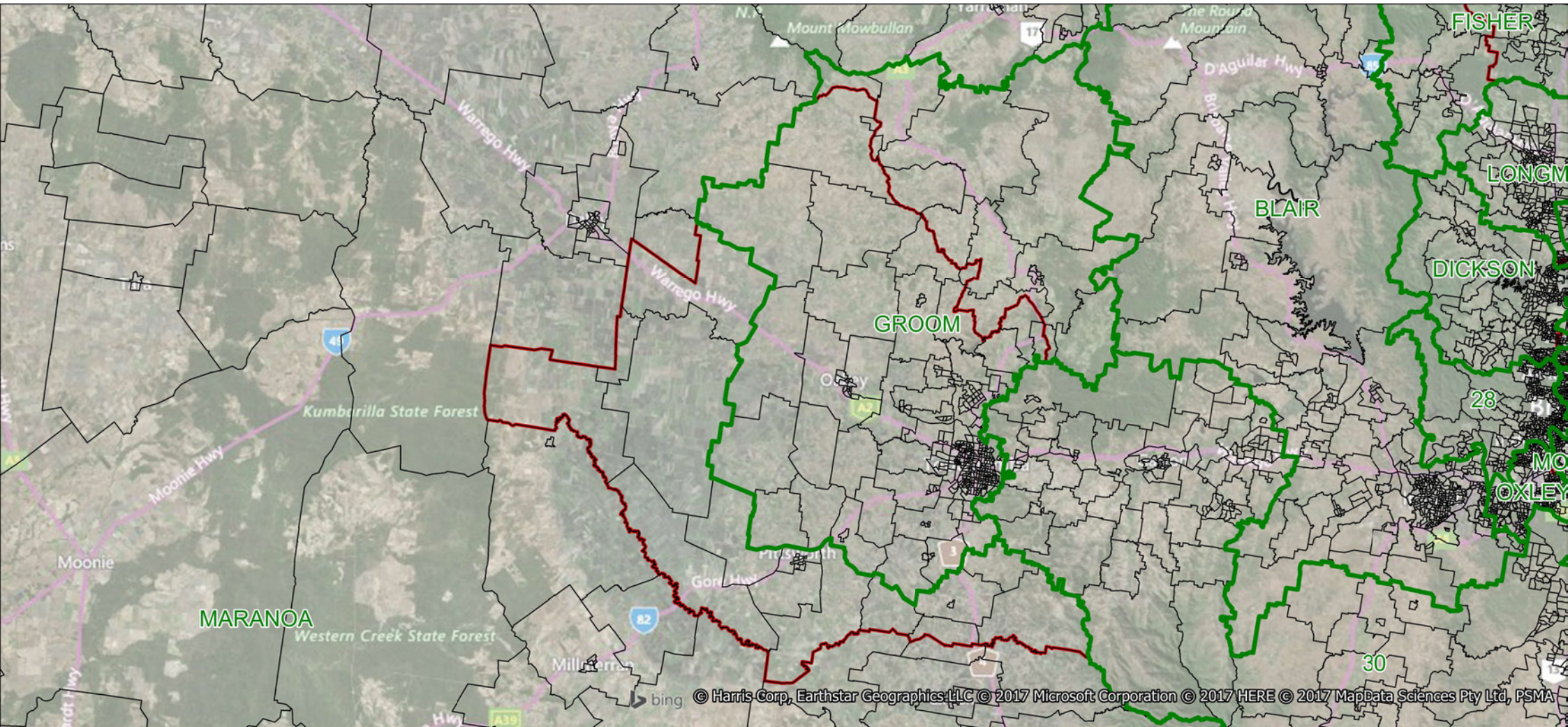
bing © Harris Corp, Earthstar Geographics LLC Earthstar Geographics SIO Earthstar Geographics SIO © 2017 Microsoft Corporation © AND © 2017 MapData Sciences Pty Ltd, PSMA

Coral Sea









MARANOA

GROOM

BLAIR

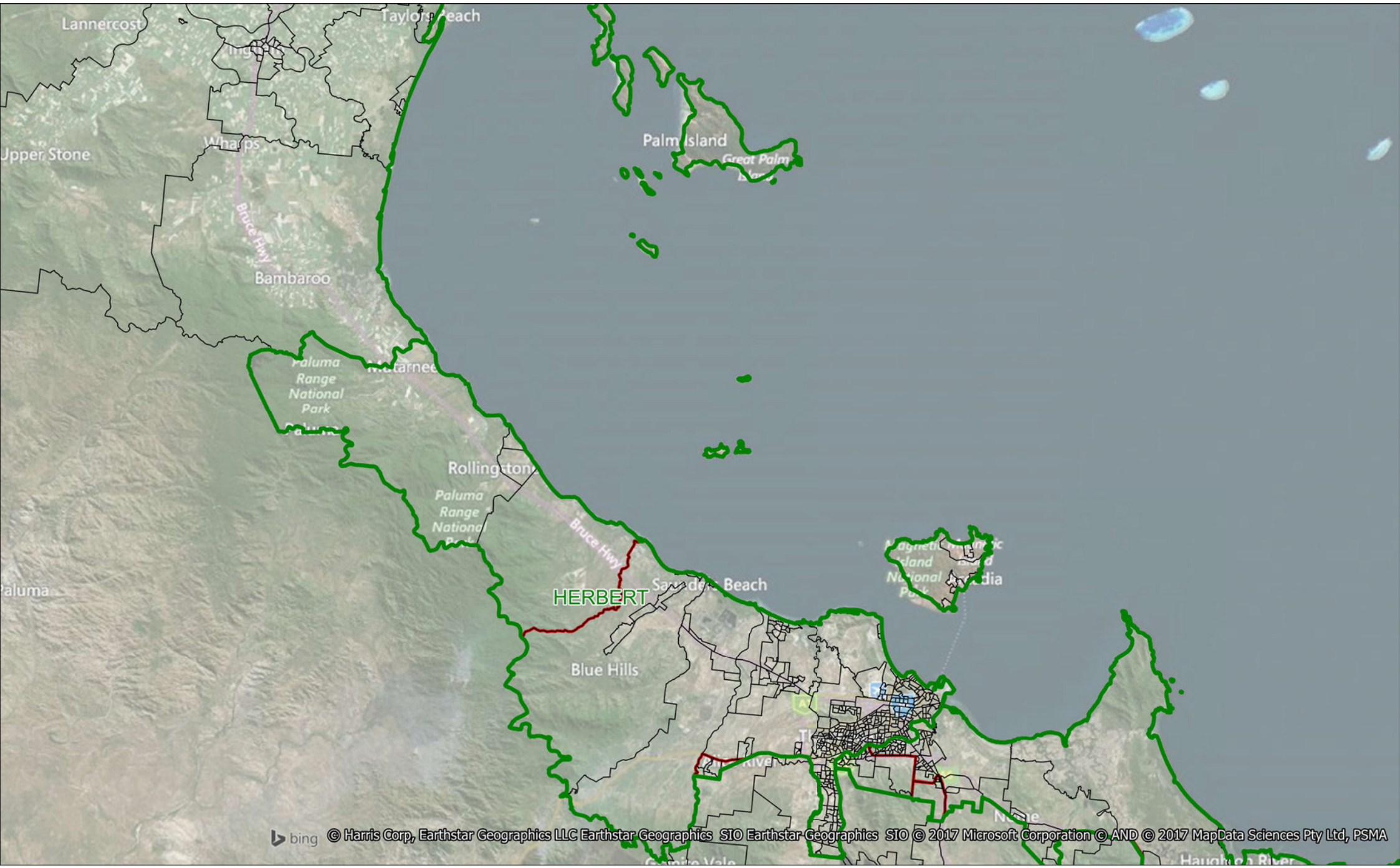
DICKSON

LONGM

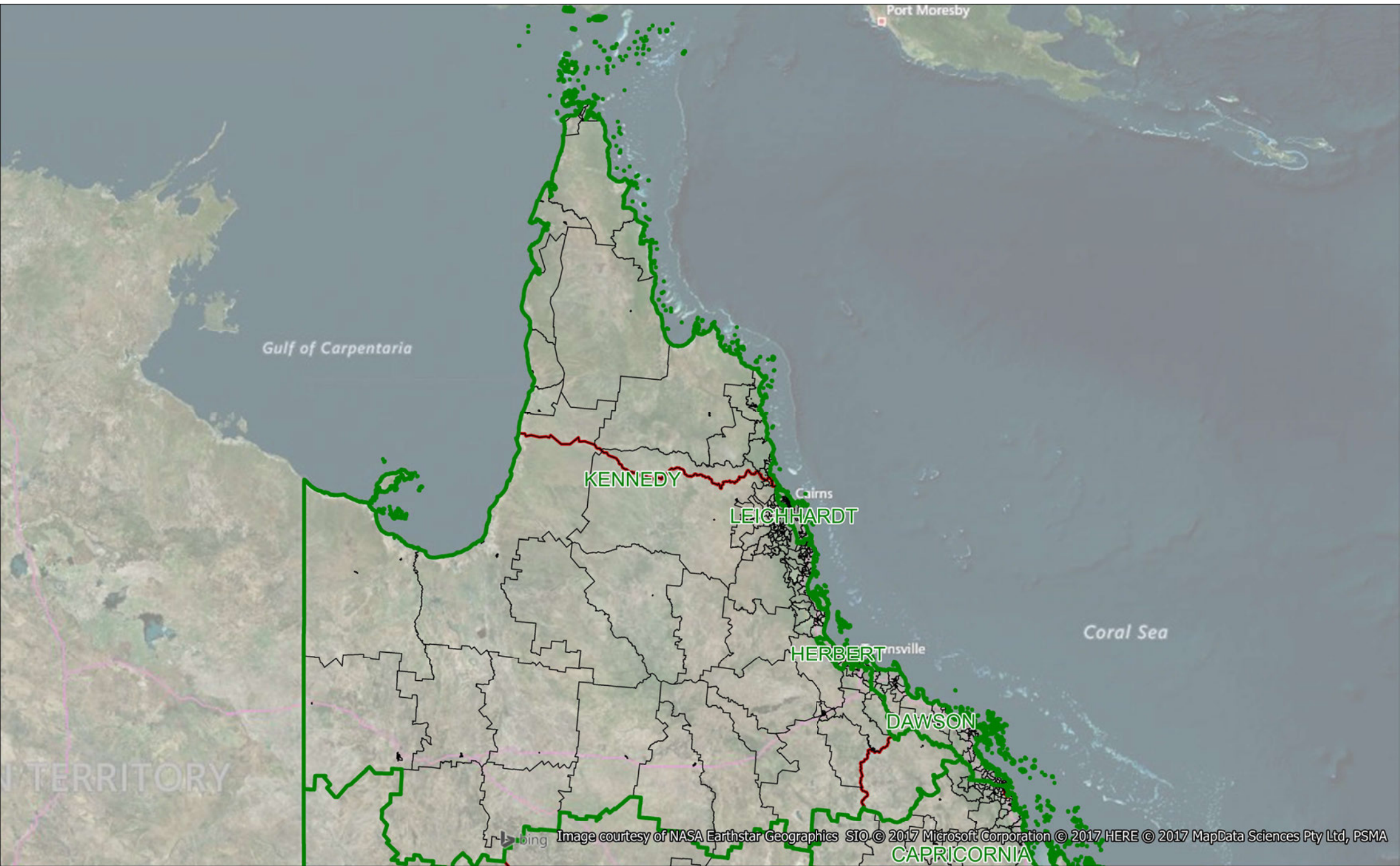
FISHER

MC OXLEY

© Harris Corp, Earthstar Geographics, LLC © 2017 Microsoft Corporation © 2017 HERE © 2017 MapData Sciences Pty Ltd, PSMA







Gulf of Carpentaria

Port Moresby

KENNEDY

LEICHHARDT

HERBERT

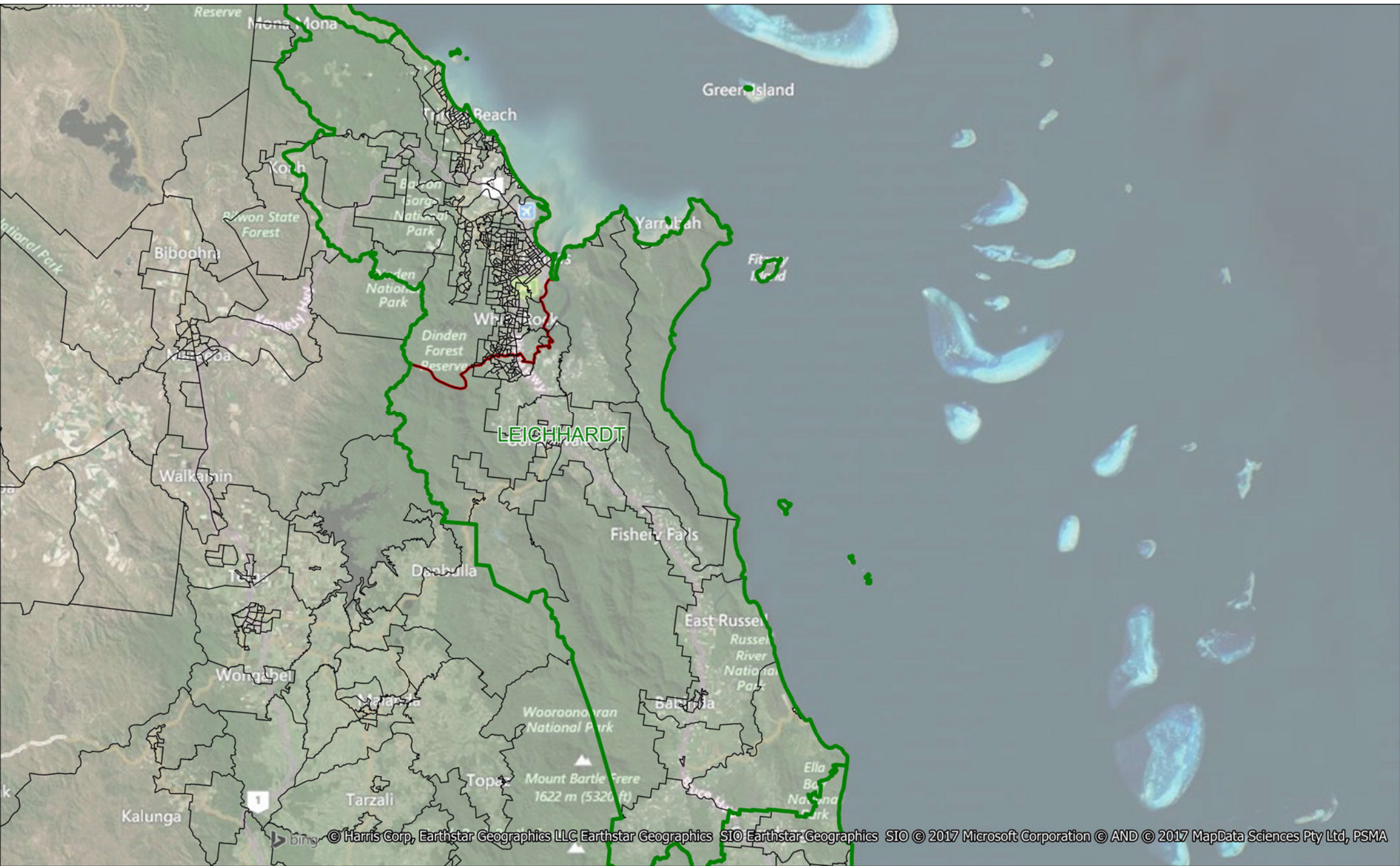
DAWSON

CARRICORNIA

Coral Sea

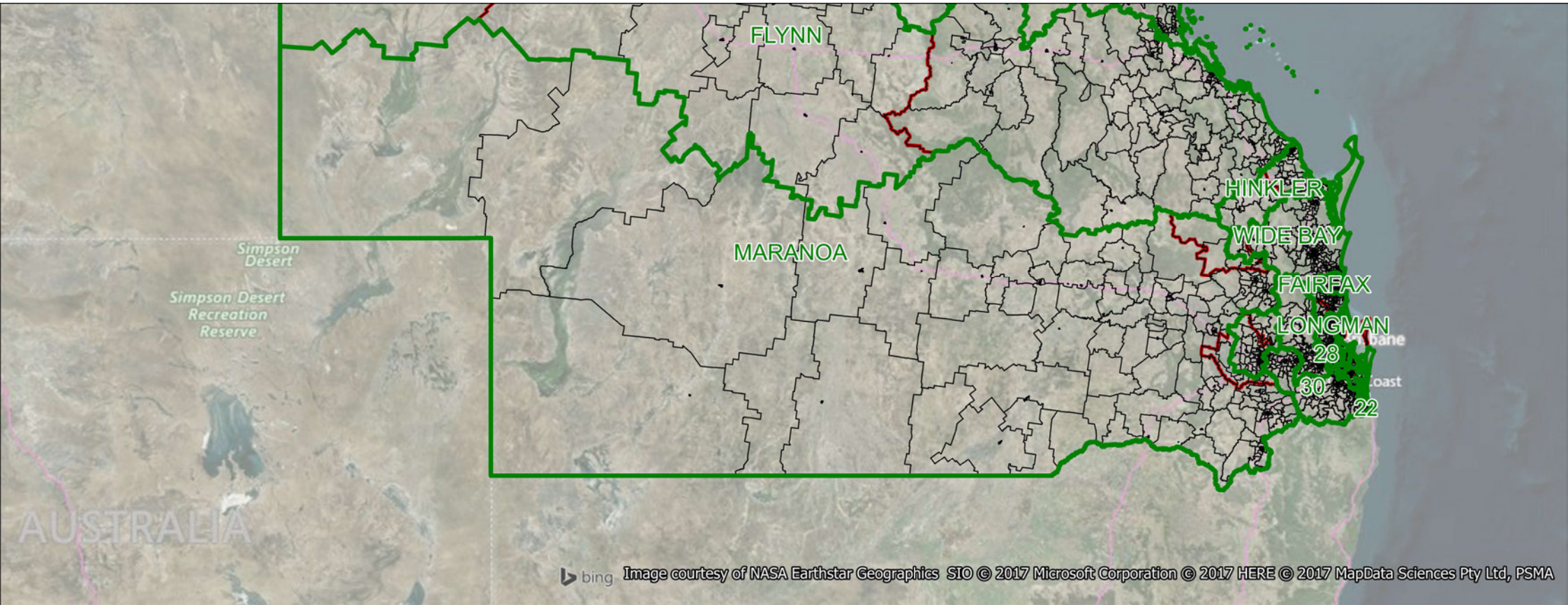
TERRITORY

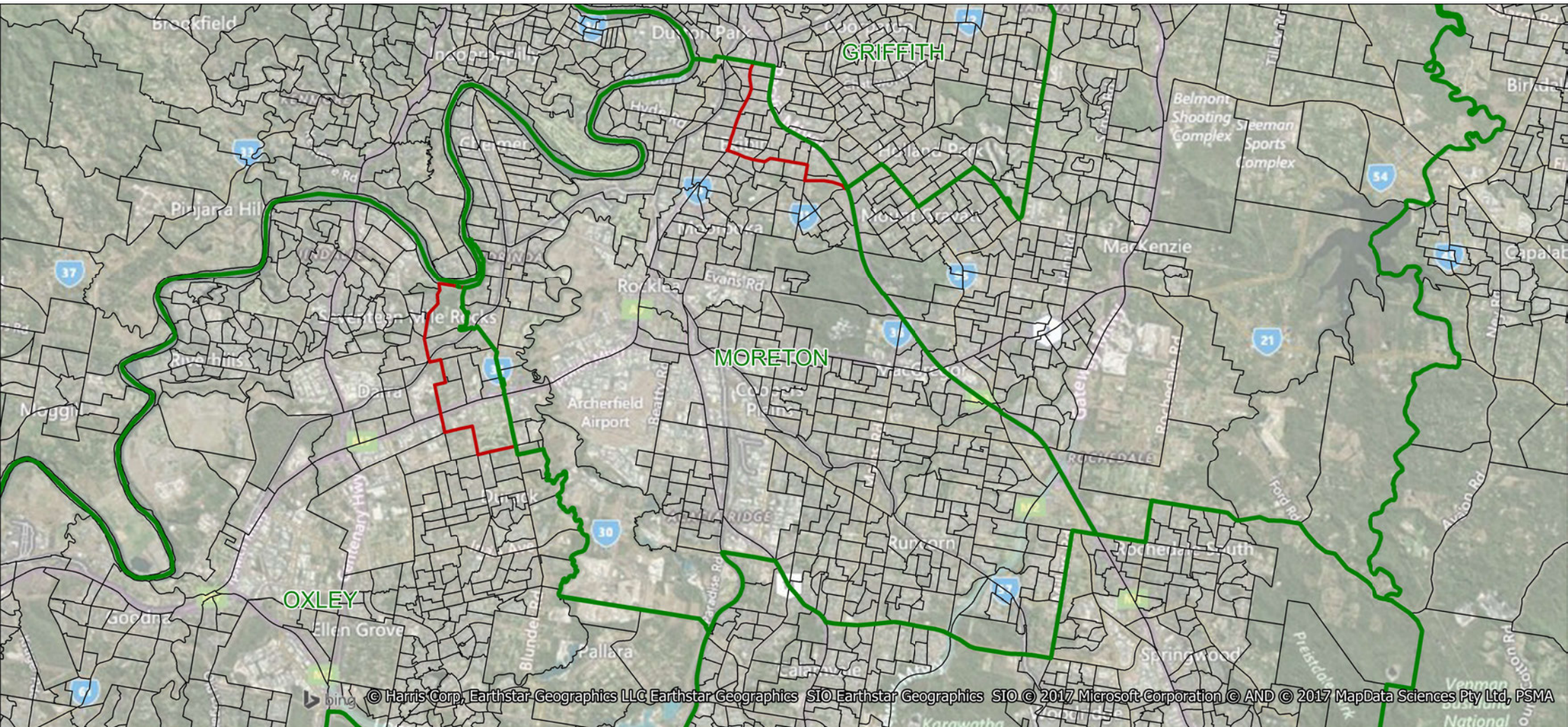
Image courtesy of NASA Earthstar Geographics SIO © 2017 Microsoft Corporation © 2017 HERE © 2017 MapData Sciences Pty Ltd, PSMA

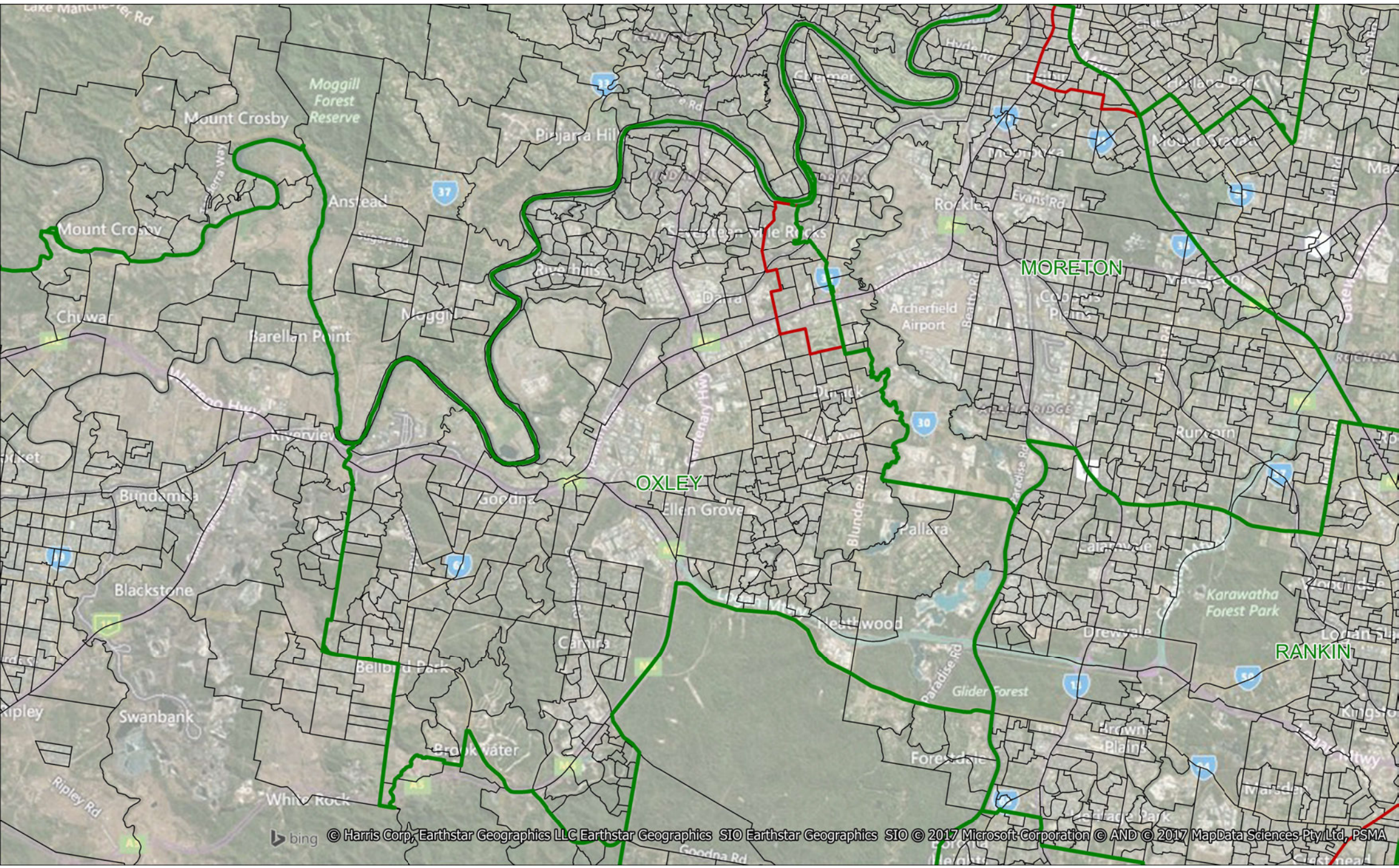


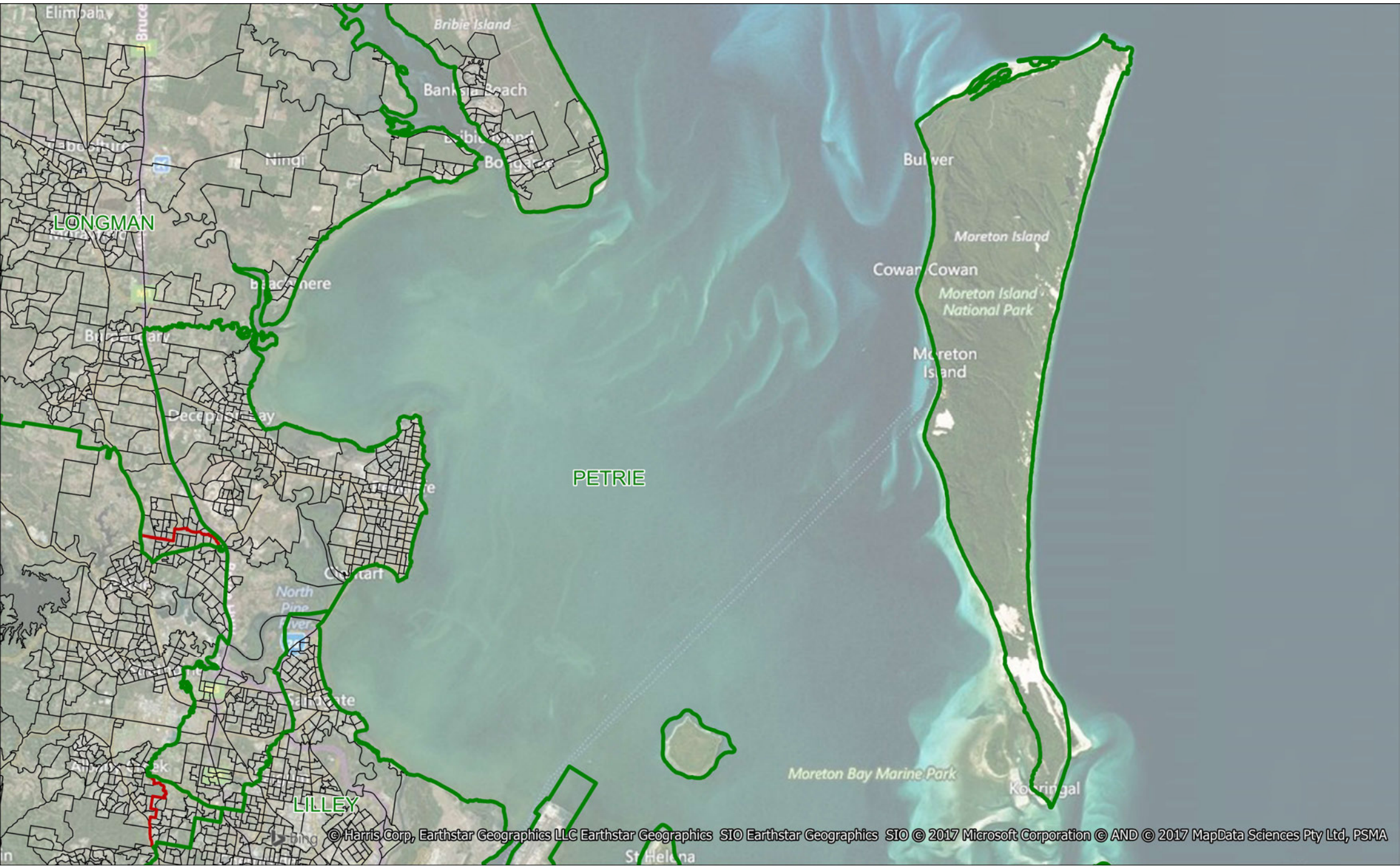


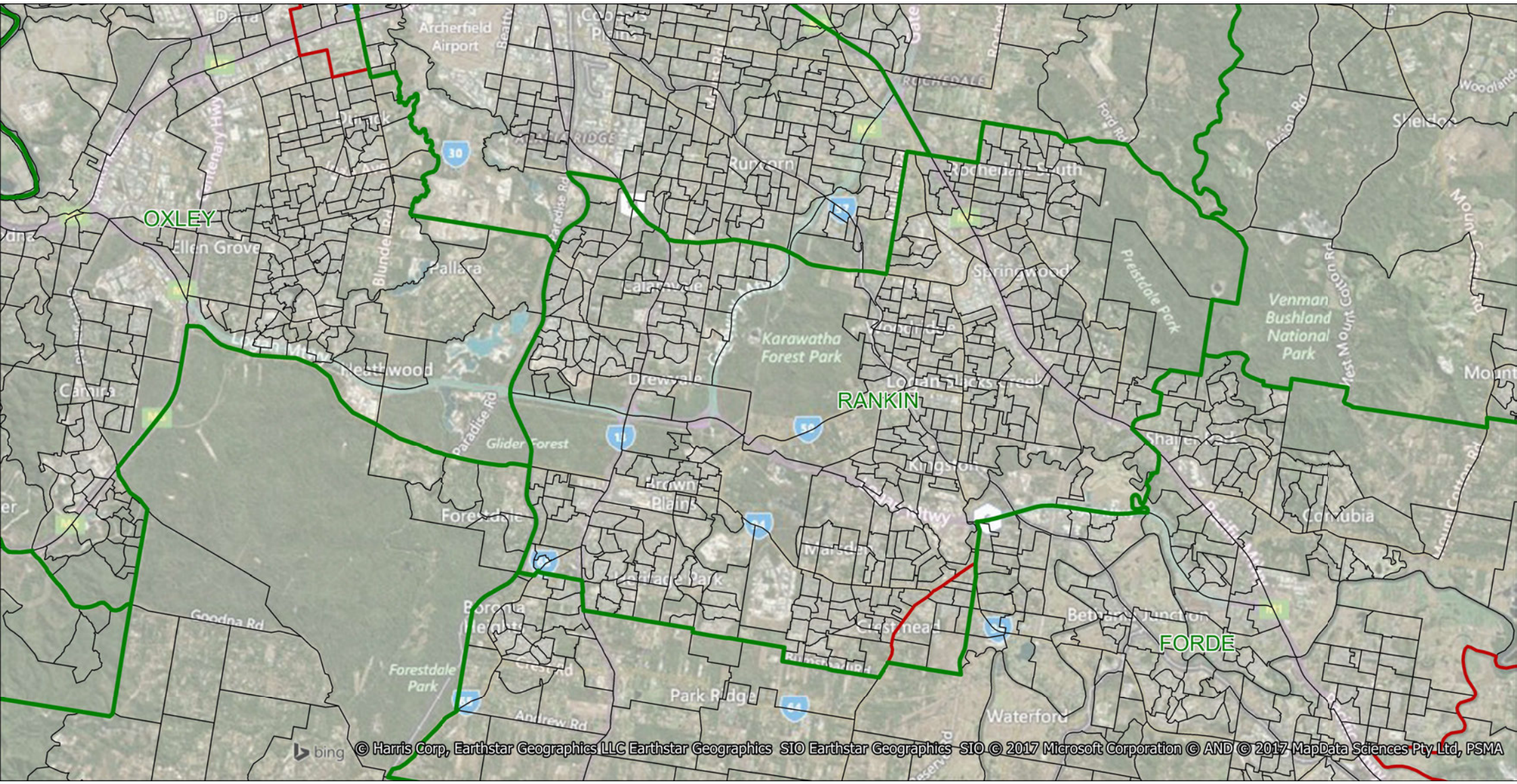












bing

© Harris Corp, Earthstar Geographics LLC Earthstar Geographics SIO Earthstar Geographics SIO © 2017 Microsoft Corporation © AND © 2017 MapData Sciences Pty Ltd, PSMA

