



THE FEDERAL  
REDISTRIBUTION  
QUEENSLAND

# Suggestion 9

Moore Park Beach Community Association

3 pages



# MOORE PARK BEACH COMMUNITY ASSOCIATION



9<sup>th</sup> May 2017

---

Moore Park Beach Community Association

Submission

to Alter Electoral Boundaries in the electorates of

Hinkler and Flynn

Direction to Commence Redistribution of Queensland into Electoral  
Divisions

Gazette - C2017G00017

The committee of the Moore Park Community Association submits the following issues to be addressed and completed in the coming redistribution:

That the Redistribution Committee considers moving the village of Moore Park Beach located in Division One of the Bundaberg Regional Council from the electorate of Flynn into the electorate of Hinkler.

### **Community of interest**

The community of interest of Division One electors lies with the town of Bundaberg. The current center, under the existing boundaries is Gladstone. The Moore Park Beach electors in the division are within 50k of the center town of Bundaberg but are over 150Km in a straight line from Gladstone, the office of the elected representative. It is further by road.

Services are provided by Bundaberg as follows:

- Doctors, Hospital, Ambulance, Fire and Police Services and Government Public Health Services, are all based in Bundaberg not Gladstone.
- Purchasing goods and services is also exclusively conducted in Bundaberg not Gladstone.
- School education from Primary, High and University is provided by government and private facilities in Bundaberg not Gladstone.
- The students from the Moore Park State School interact exclusively with the schools in the electorate of Hinkler in sports and arts and not with schools in Gladstone.
- All retirement homes servicing the Moore Park Beach area are based in Bundaberg not Gladstone.

- It is almost impossible to do any Federal Government business in the Flynn electorate due to distances involved and is, even if you have a vehicle and the where withal to stand the cost of travel, unacceptable.
- Alternate communication methods will be promoted by those who wish the status quo to stay but there are many instances when being able to speak face to face with your elected represented is paramount and comforting.

#### **Communication and ease of access**

The elected representative of the Flynn electorate rarely visits the main population center of Moore Park Beach, due, I imagine, to the distances and time involved to service what is a very minor number of constituents.

#### **Lack of electoral representation**

In the three years I have been a resident the Elected Representative has visited twice to my knowledge. One visit was at the invitation of this committee. The Local State member for Burnett holds weekly meetings at a community venue called the Pink House, here in Moore Park Beach without fail. We, the committee cannot see any reason such commitment is not forthcoming from the current member. I am sure that if moved to Hinkler we would have greater access to an elected representative at an on call basis.

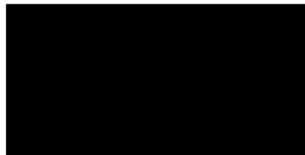
#### **Population**

The population of the two electorates is 100687 for Hinkler and 100677 for Flynn, on the 2/07/2106. On the day of the 2016 election some 1079 electors voted at the Moore Park Beach polling site.

#### **Outcome**

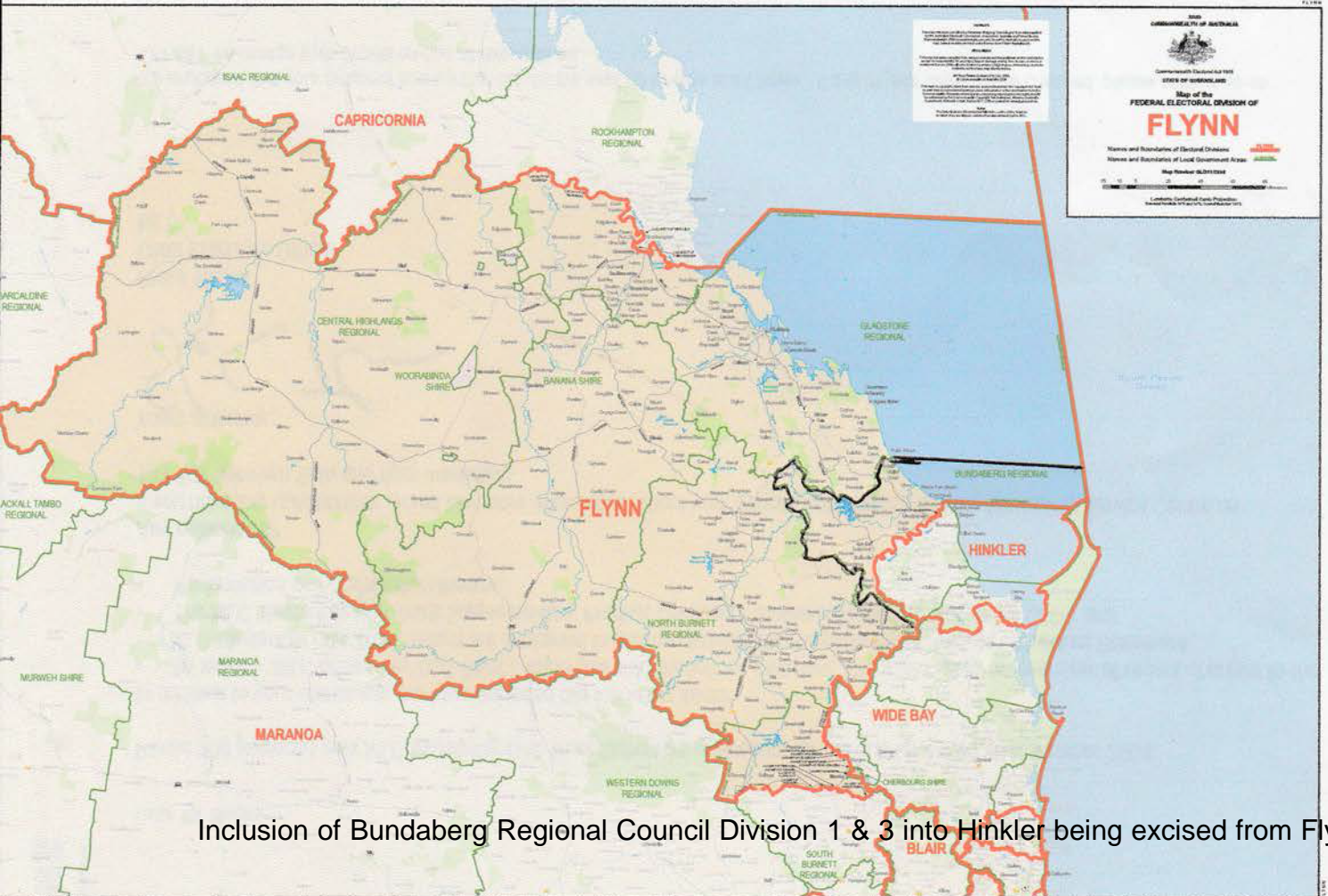
It is our desire that the above be taken into account when deliberations regarding the redistribution begin. It is also our desire, given the effort required to achieve equality of representation for electors that this submission is genuinely received and used to allow the residents of Moore Park Beach to return home to their traditional electorate.

Submitted for and on behalf of the Community Association as per the minuted motion of the Management Meeting 9/05/2017.



Vince Moore  
President  
Moore Park Community Association





Inclusion of Bundaberg Regional Council Division 1 & 3 into Hinkler being excised from Flynn