



Comment on suggestion 13

Kate Townsend

54 pages

2 June 2017

Redistribution Committee for Queensland
7th floor, 488 Queen Street, Brisbane
By email: Fedredistribution-QLD@aec.gov.au

Dear Redistribution Committee,

Thank you for the opportunity to make comments in relation to the 2017 redistribution of federal electoral division boundaries in Queensland.

These comments are made in response to the submissions received by the Committee thus far, along with an alternative state-wide solution that may provide the Committee with a viable and preferable alternative to the overtly partisan submissions lodged by the major parties.

It is clear that the submissions lodged by the major parties and some other parties are overtly partisan when you consider how drastic and significant the changes are that they propose. This redistribution should involve relatively minor changes, given that no additional seat is being created, nor is any division being removed. The purpose of this redistribution is essentially to adjust the existing division boundaries to ensure they continue to meet the "one vote, one value" principle into the future. Most of the existing divisions already meet the current and future population quotas.

For these reasons, it is strongly suggested that the Committee reject most of the drastic changes proposed in some of the submissions. It can be safely presumed that the previous Committee sufficiently satisfied the community of interest test when it drew the current boundaries. Suggestions to make drastic changes from these boundaries, which are not statistically necessary, could therefore be a "tell" for attempts at partisan influence in the process.

This submission identifies a solution where:

- **Fewer than 82,500 electors need to be transferred** between divisions, (2.66% of total enrolment), far fewer than is proposed in other submissions;
- **8 divisions need not be changed** at all, whereas other submissions make too many changes;
- **simpler boundaries** can be created for almost every division, compared to the current boundaries and compared to other submissions;
- the principle of **"one vote, one value" is better achieved** by creating divisions which meet even more ambitious quota targets of +/-2.8% at the projection date;
- the **"dog-leg" areas sticking out from the boundaries of existing divisions are reduced**, and no new "dog-leg" areas are proposed, which is certainly not the case with the partisan submissions;
- **community interests in every single division are maintained or improved**, partially because this submission avoids drastic changes to existing boundaries, and partially for the reasons outlined below in a division-by-division consideration of community interests.

It is hoped that, the Redistribution Committee is able to take advantage of these comments as a genuine alternative to the submissions lodged by the major political parties and other partisan submissions.

Yours sincerely,

Kate Townsend

By email:

Statistical outcomes achieved by these comments:

Division	Proposed Pop'n	Current Quota	Projected Pop'n	Projected quota	Electors transferred
Blair	101316	98.17	108808	98.80	82
Bonner	100770	97.64	107808	97.90	0
Bowman	104241	101.01	109932	99.83	0
Brisbane	105449	102.18	112438	102.10	2708
Capricornia	100738	97.61	107429	97.55	0
Dawson	102952	99.76	109613	99.54	1891
Dickson	104392	101.15	112786	102.42	8814
Fadden	100876	97.74	107682	97.78	6195
Fairfax	105611	102.33	111536	101.28	6159
Fisher	106308	103.01	111750	101.48	2618
Flynn	104468	101.23	111984	101.69	294
Forde	99884	96.78	108434	98.46	6431
Griffith	102779	99.59	110471	100.31	4220
Groom	102009	98.84	108463	98.49	0
Herbert	105077	101.82	113235	102.82	0
Hinkler	102819	99.63	107232	97.37	0
Kennedy	106050	102.76	112640	102.28	933
Leichhardt	103334	100.13	110992	100.79	6579
Lilley	101202	98.06	108447	98.48	12232
Longman	105514	102.24	112510	102.17	9398
Maranoa	103151	99.95	109197	99.16	0
McPherson	104405	101.16	110478	100.32	0
Moncrieff	103327	100.12	108715	98.72	0
Moreton	101538	98.39	110077	99.96	0
Oxley	103303	100.10	112566	102.22	1071
Petrie	101644	98.49	107769	97.86	5113
Rankin	102349	99.17	111658	101.39	0
Ryan	105707	102.43	112554	102.21	385
Wide Bay	104370	101.13	108831	98.83	5569
Wright	100521	97.40	107700	97.80	1795
Total	3096104		3303733		<u>82487</u>

The value of minimising the number of electors transferred between divisions

Minimising the number of electors transferred between divisions helps to reduce confusion amongst electors and helps to reduce disenfranchisement to the extent that electors feel connected to their existing divisions.

These comments suggest changes that would ensure the number of electors transferred between divisions is minimised. This is achieved by accepting that existing boundaries set by the last Redistribution Committee do meet community of interest tests, and by avoiding “double-transfers” of electors in each direction between two divisions or a number of adjacent divisions.

These comments suggest a solution that can achieve all of the requirements of the redistribution process, whilst only transferring approximately 82,487 electors between divisions. This is a lower number than most other submissions, presumably because other submissions are having regard, at least in part, to partisan considerations which are not included in the redistribution considerations set out in the legislation.

The important principle of "one vote, one value"

It is worth reiterating why the legislation sets the quota numbers as the primary factor to consider when conducting redistributions. It ensures adherence to the principle of "one vote, one value", a fundamental cornerstone of democracy. So long as the number of electors is as close to equal as possible in each division, the value of each vote cast remains equal for every elector.

While there are a number of potential outcomes in any redistribution, it is submitted that the Redistribution Committee should not merely seek to meet the quota limits by proposing divisions which are just a whisker within the quota numbers, if it can help it.

Meeting the quota requirements should not be merely treated as a checkbox exercise. Rather, the Redistribution Committee should aim to excel by proposing divisions containing as close to the same number of electors as it can (while still having proper regard to the other non-primary considerations such as community of interests, of course). It is submitted that this is the approach that best reflects the intention of the process set out in section 66 of the Electoral Act.

In aiming to excel in relation to all of the legislative requirements, especially the primary factor, success will be measured by how close to equal the number of electors will be across all divisions at the projection date but also, to a lesser degree at the current date and intervening period.

It is no coincidence that the quota limits at the projection date (+/-3.5%) are far tighter than the current quota limits (+/-10%). Given that the redistribution process can take anything up to one year to complete, the current numbers of electors in proposed divisions are less important in ensuring "one vote, one value" at the time of future elections.

To assist meet the important principle of "one vote, one value", this submission suggests a set of divisions which are within only +/-2.80% of the projection date quota. In fact, all These more ambitious quota targets are a small, but significant, step closer to achieving "one vote, one value."

Reducing the "dog-leg" areas sticking out from boundaries

It is noted that previous redistributions have occasionally been subject to criticism on the basis that they created divisions with "dog-leg" areas that protrude out from the general area of the division.

Generally, the strong inference drawn in such criticisms is that "dog-leg" areas might be seen as an attempt to influence the political margins of divisions (for example, by including a certain geographic area in a Division in preference to other areas that may be more closely adjacent to that Division).

A common subject of such criticism has been the division of Petrie, which is based on the Redcliffe Peninsula and adjoining Bruce Highway localities, but which has historically also included a long narrow stretch of geography southwards through Bracken Ridge and Aspley. It previously went all the way to the inner-city suburb of Stafford but recent redistributions have reduced it somewhat.

Other examples of "dog-leg" areas that can be found in the existing divisions include Herbert (the area from Rasmussen to Kelso); Ryan (the north-western boundary of the Brisbane City Council); Longman (the area containing Dakabin and Kallangur), Fairfax (the western area which used to be the boundary of what was the Maroochy Shire Council), and both the northern and western extremities of Wright where it stretches up into Greenbank Military Camp and stretches around Rosewood into the Lockyer Valley.

It is submitted that every recent case of "dog-leg" areas appears to have been properly justified at the time on sound community-of-interest reasons. For instance, the existing boundaries of Petrie are due to historical reasons, while some other examples are based on existing or old LGA boundaries.

Nonetheless, this submission has sought to address many of the cases listed above, by proposing a set of boundaries which are more immune from such criticism.

All of the divisions proposed in this submission are far more contiguous than was previously the case. They are therefore far less likely to provide ammunition for critics raising claims of political interference.

This is an important outcome from the perspective of community confidence in the redistribution process.

The importance of simpler, more identifiable, boundaries

It is beneficial to have simple, readily recognisable boundaries for the following reasons:

1. It is easy to explain them to electors;
2. The boundary descriptions are relied upon particularly by new electors or electors who have just moved into an area, in order to understand the division in which they reside. They are also relied upon by electors who are transferred as a result of the redistribution process;
3. An elector who cannot understand the boundaries easily faces an increased risk of disenfranchisement, if they attend the wrong polling booth, or fail to recognise their division or their candidates. On the other hand, if electors can understand the boundaries easily, then there is less chance of confusion, which helps to guard against disenfranchisement.

This submission aims to propose divisions which have simpler boundaries. Whether the boundaries are simpler for a division is usually ascertained by looking at how many "descriptors" are needed to explain the boundary line to an elector. For instance, a road, a watercourse, a railway line, an LGA boundary or a property boundary are all counted as one "descriptor".

Generally speaking, the more descriptors that are needed to describe the boundaries of a division, the more complicated the boundary is, and the risk of voter confusion is increased.

Of course, this aim is considered less critical than, say, meeting the quota limits or ensuring strong community interests are represented within divisions. Nonetheless, this submission achieves a significant decrease in the total number of boundary descriptors used around the State. Furthermore, this submission manages to make proposals that decrease (or hold constant) the number of boundary descriptors needed for almost every division.

This submission brings its assessment in the South-East corner of Queensland, given that so many of the divisions in this region are within quota and do not require adjustment.

McPherson

McPherson is currently within quota and it will remain within quota at the projection date. Most submissions proposed no change, so those submissions, including from both the ALP and LNP, should be adopted here. Submissions which proposed unnecessary changes here, including from the Greens, should be rejected as unnecessary.

Being in the corner of the state, and with no flow-on impacts affecting it, no changes need to be made to the boundaries of McPherson. As such, its existing community interests, its geographic features and area, the means of travel and communication within the division, and its current boundaries, are all maintained.

Changes:	Nil
Electors transferred out:	0
Electors transferred in:	0

Moncrieff

Moncrieff is currently within quota and it will remain within quota at the projection date. Most submissions proposed no change, so those submissions, including from both the ALP and LNP, should be adopted here. Submissions which proposed unnecessary changes here, including from the Greens, should be rejected as unnecessary.

Being near the corner of the state, and with no flow-on impacts affecting it, no changes need to be made to the boundaries of Moncrieff. As such, its existing community interests, its geographic features and area, the means of travel and communication within the division, and its current boundaries, are all maintained.

Changes:	Nil
Electors transferred out:	0
Electors transferred in:	0

Fadden

Fadden is over-quota at the projection date and a moderate number of electors need to be transferred to an adjacent division in order to meet the "one vote, one value" principle.

As noted above, Moncrieff to the south of Fadden is within quota and so no changes should be made to that boundary. The choice is effectively to transfer excess electors from Fadden to either Wright or Forde. Having regard to the fact that Forde will have a lower number of electors at the projection date, having regard to the larger shared boundary between Fadden and Forde, having regard to the probable direction of future redistributions which will more likely see Fadden and Forde move closer into the Gold Coast rather than away from it, and having regard to how community interests are better maintained, it is proposed that excess electors be transferred to Forde, not Wright.

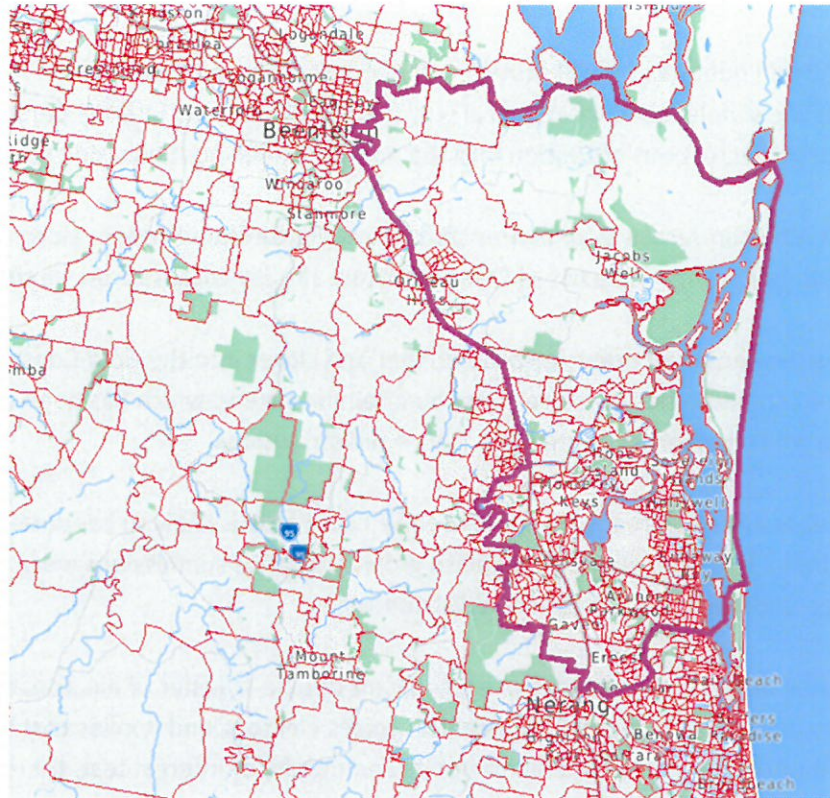
It is proposed that Alberton-Jacobs Well be transferred from Fadden to Forde, along with most of Ormeau-Yatala, reuniting it with the parts of Ormeau-Yatala already within Forde, as shown.

This suggestion has the benefit of drawing Fadden further and closer into the Gold Coast, reinforcing and solidifying its longstanding communities of interest and maintaining a trend which has been evident in previous redistributions and which is likely to continue in future redistributions.

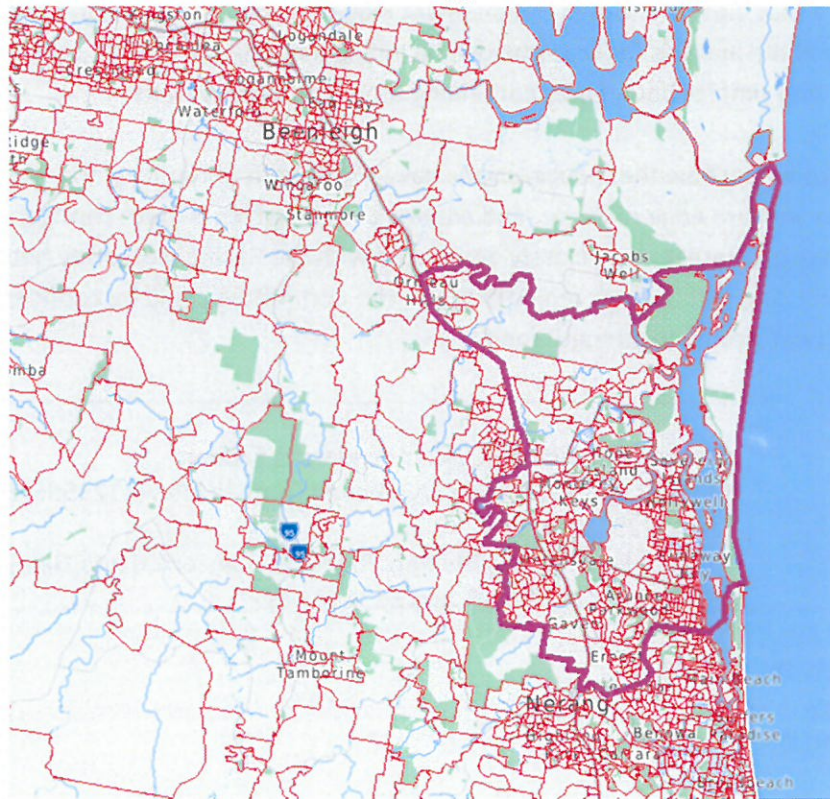
The proposals of Labor and the Greens do not recognise how Fadden is likely to continue to be drawn further to the Gold Coast in the long run and, if they were adopted, the changes may well have to be undone again in a future redistribution. The LNP submission in this division is closer to what is suggested here, although it is recommended that some additional SA1s in Ormeau be transferred from Fadden to Forde, for reasons which become clear in the analysis below for Forde and Oxley.

Changes:	Jacobs Well-Alberton SA2 moved into Forde More of Ormeau-Yatala SA2 moved into Forde (3125506, 3125522, 3125524-8, and 3125532-4)
Electors transferred out:	6,195
Electors transferred in:	0

Fadden - existing



Fadden - suggested



Forde

Forde is currently within quota and it will remain within quota at the projection date. However, making changes to Forde is the simplest and most logical way (from a community interest perspective) to transfer the surplus balance of electors out of Fadden into the nearest under-quota division which is Oxley.

It is suggested that Alberton-Jacobs Well be transferred into Forde from Fadden, along with most of Ormeau-Yatala, reuniting it with the parts of Ormeau-Yatala already within Forde, as shown.

This suggestion has the benefit of drawing Forde further and closer into the Gold Coast, reinforcing and solidifying its current communities of interest and maintaining a trend which has been evident in previous redistributions and which is likely to continue in future redistributions.

The proposals of Labor and the Greens do not recognise how Forde is likely to continue to be drawn further to the Gold Coast in the long run, due to population growth. If those submissions were adopted, the changes may well have to be undone again in a future redistribution.

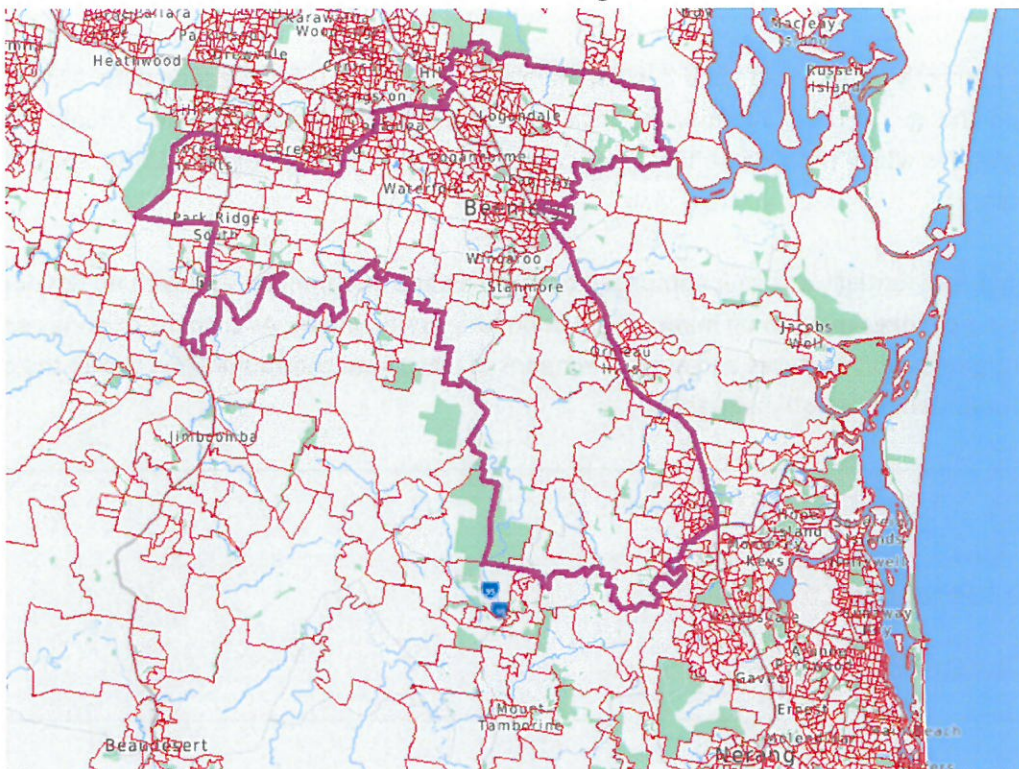
Furthermore, the ALP suggestion to engage in a significant double-transfer of electors between Wright and Forde is statistically unnecessary, needlessly disenfranchises electors, and implies that the previous Redistribution Committee did not sufficiently meet its community of interest test, therefore it should be rejected.

It is then suggested that most of Boronia Heights-Park Ridge SA2 be transferred to Oxley, which has the benefits explained in the analysis for Oxley below, including meeting the quotas, community of interest, and creating divisions with simpler boundaries containing more contiguous areas.

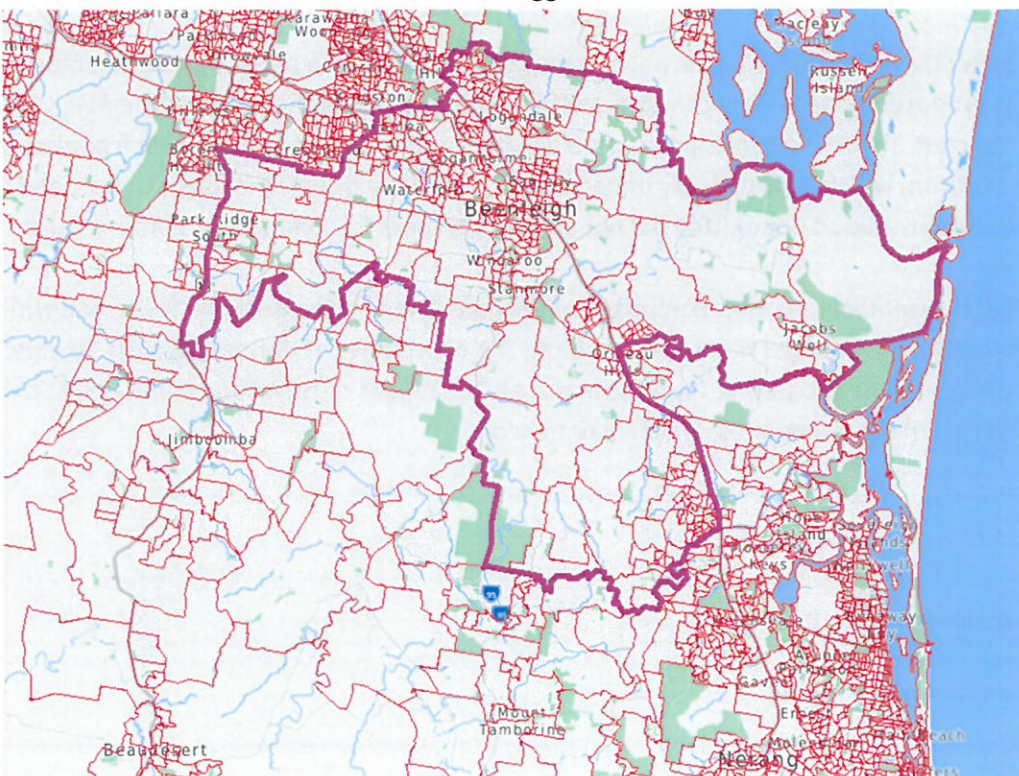
Note from the maps below how these suggestions have the benefit of reducing the “dog-leg” area that protrudes from the western edge of Forde, and creates a Forde which is more contiguous and centred around a community of interest more closely associated with the Pacific Motorway between Eagleby and Oxenford. Over time, and with further redistributions, the Committee could be confident that community of interest would be reinforced and strengthened.

Changes:	Jacobs Well-Alberton SA2 moved from Fadden More of Ormeau-Yatala SA2 moved from Fadden (3125506, 3125522, 3125524-8, and 3125532-4) Most of Boronia Heights-Park Ridge be transferred into Oxley (3131101-7, 3131110-2, 313114-9, and 3131121-9)
Electors transferred out:	6,431
Electors transferred in:	6,195

Forde - existing



Forde - suggested



Bowman

Bowman is currently within quota and it will remain within quota at the projection date. Most submissions proposed no change, so those submissions, including from both the Greens and LNP, should be adopted here. Submissions which proposed unnecessary changes here, including from the Labor, should be rejected as unnecessary.

Being in what is essentially a corner comprised of the coastline and Bonner, and with no flow-on impacts affecting it, no changes need to be made to the boundaries of Bowman. As such, its existing community interests, its geographic features and area, the means of travel and communication within the division, and its current boundaries, are all maintained.

Changes:	Nil
Electors transferred out:	0
Electors transferred in:	0

Bonner

Bonner is currently within quota and it will remain within quota at the projection date. Unfortunately, most submissions proposed unnecessary changes, so those submissions, including from the ALP, LNP and Greens, should be rejected. The ALP submission is notably bad for proposing a two-way switch of electors between Bonner and Griffith, which is statistically unnecessary, needlessly disenfranchises electors, and implies that the previous Redistribution Committee did not sufficiently meet its community of interest test.

Being in what is essentially a corner comprised of the coastline and the Brisbane River, and with no flow-on impacts affecting it, no changes need to be made to the boundaries of Bonner. As such, its existing community interests, its geographic features and area, the means of travel and communication within the division, and its current boundaries, are all maintained.

Changes:	Nil
Electors transferred out:	0
Electors transferred in:	0

Rankin

Rankin is currently within quota and it will remain within quota at the projection date. Most submissions proposed no change, so those submissions, including from the ALP and the Greens (they suggested a cosmetic change only), should be adopted here. Submissions which proposed unnecessary changes here, including from the LNP, should be rejected as unnecessary.

While Rankin could potentially be impacted by flow-on impacts from every direction, on this occasion those flow-on impacts can be avoided and no changes need to be made to the boundaries of Rankin. As such, its existing community interests, its geographic features and area, the means of travel and communication within the division, and its current boundaries, are all maintained.

Changes:	Nil
Electors transferred out:	0
Electors transferred in:	0

Griffith

Griffith is over-quota at the projection date and a moderate number of electors need to be transferred to adjacent divisions.

The Brisbane River is a readily identifiable and a longstanding and effective boundary between many divisions, including between Griffith and Brisbane. It forms a physically wider and clearer divide than any roads, railway lines or suburb boundaries, and it delineates different communities of interest on either side of the River all the way from Moreton Bay to Ipswich LGA. Previous redistributions have deliberately maintained the Brisbane River as a boundary between many divisions, and even extended its use as a consistent boundary, for example the previous redistribution which ensured that Ryan was exclusively north of the River. Therefore, it is strongly recommended that surplus electors in Griffith are not transferred to Brisbane, which is itself over-quota in any case.

The remaining options for transferring surplus electors in Griffith are Bonner and Moreton. Given that Bonner is perfectly within quota and does not require changes, whereas Moreton is under-quota and requires additional electors, it makes sense to transfer a modest number of electors from Griffith to Moreton, as shown, in a way that improves community interests and simplifies the boundaries between these divisions.

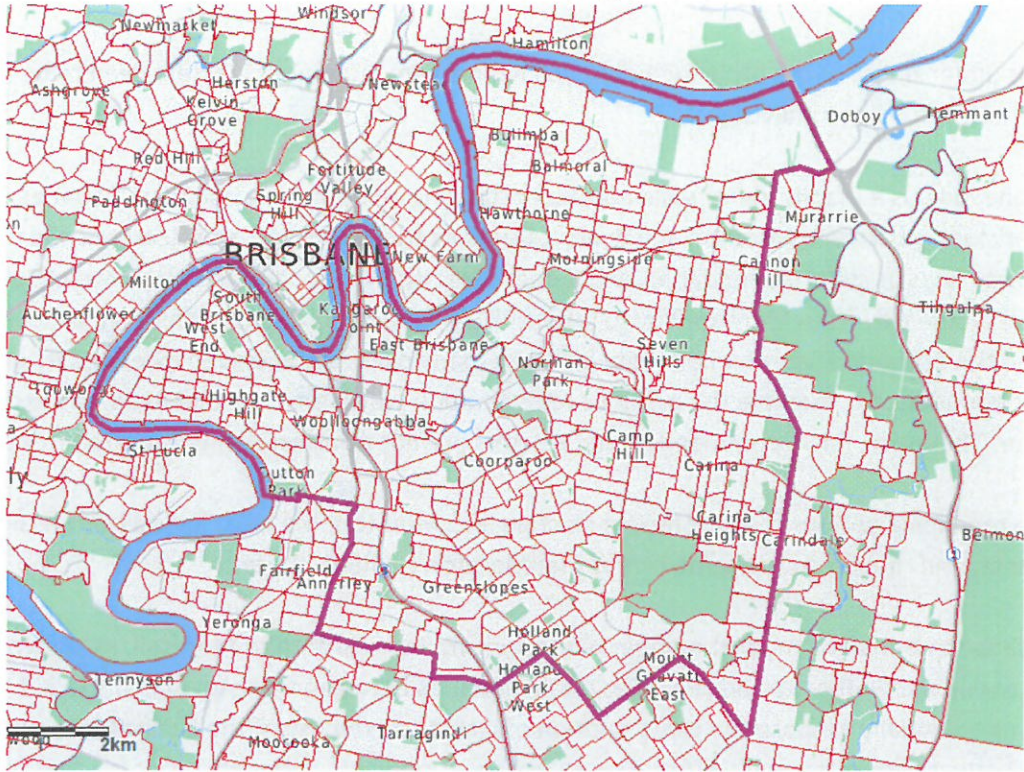
The ALP and LNP submissions essentially propose the same solution of increasing the use of the Pacific Motorway as the boundary between Griffith and Moreton. This solution is supported, although it is noted that fewer SA1s can be transferred in order to achieve the quotas for Griffith and Moreton. The Pacific Motorway is a sensible, readily-identifiable boundary and its use should be extended in this way. This change will also simplify the boundaries.

The ALP submission makes an additional and redundant two way-switch between Griffith and Bonner, which needlessly changes the established boundary in a manner that is statistically unnecessary, needlessly disenfranchises electors, and implies that the previous Redistribution Committee did not sufficiently meet its community of interest test.

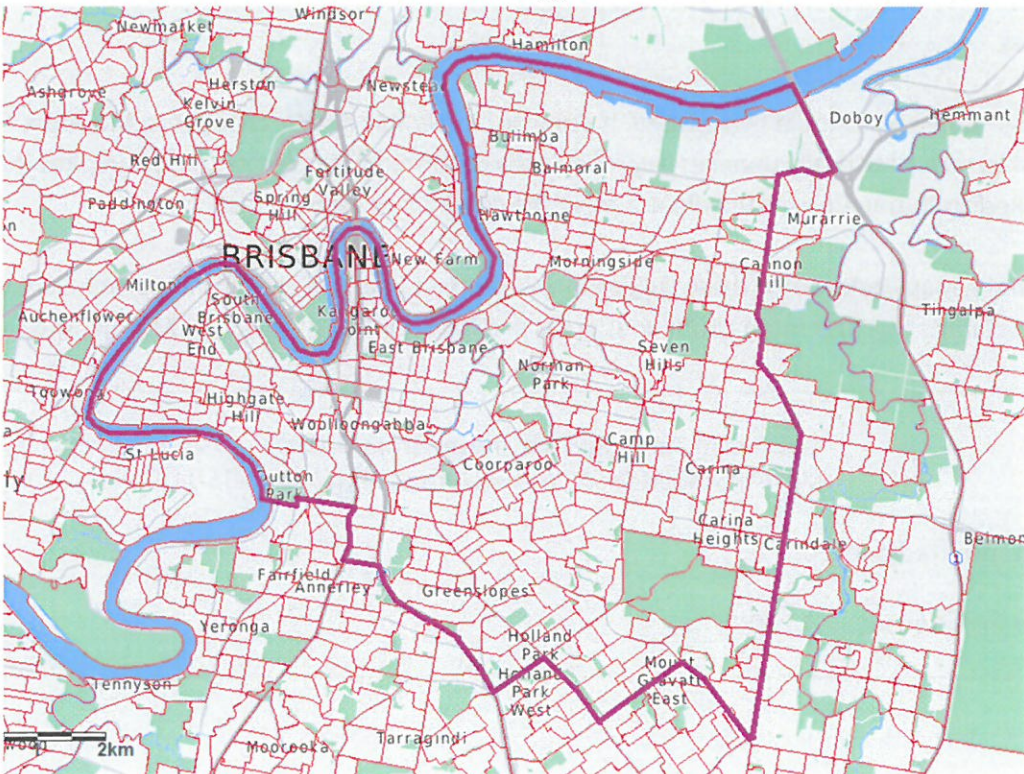
The Greens submission should likewise be rejected. It proposes incredibly drastic changes to Brisbane, Lilley, Ryan, Griffith and Bonner which are statistically unnecessary, needlessly disenfranchise electors, and it implies that the previous Redistribution Committee did not meet the community interest test.

Changes:	The rest of Tarragindi SA2 moved into Moreton More of Annerley SA2 moved into Moreton (3105204-11)
Electors transferred out:	4,220
Electors transferred in:	0

Griffith - existing



Griffith - suggested



Moreton

Moreton is under-quota at the projection date and a moderate number of electors need to be transferred into Moreton from adjacent divisions.

The Brisbane River is a readily identifiable and a longstanding and effective boundary between many divisions, including between Moreton and Ryan. It forms a physically wider and clearer divide than any roads, railway lines or suburb boundaries, and it delineates different communities of interest on either side of the River all the way from Moreton Bay to Ipswich LGA. Previous redistributions have deliberately maintained the Brisbane River as a boundary between many divisions, and even extended its use as a consistent boundary, for example the previous redistribution which ensured that Ryan was exclusively north of the River. Therefore, it is recommended that electors are not transferred into Moreton from Ryan.

Out of the remaining options for transferring electors into Moreton, the most logical is from Griffith, given it is over-quota, and roughly to the same extent that Moreton is under-quota.

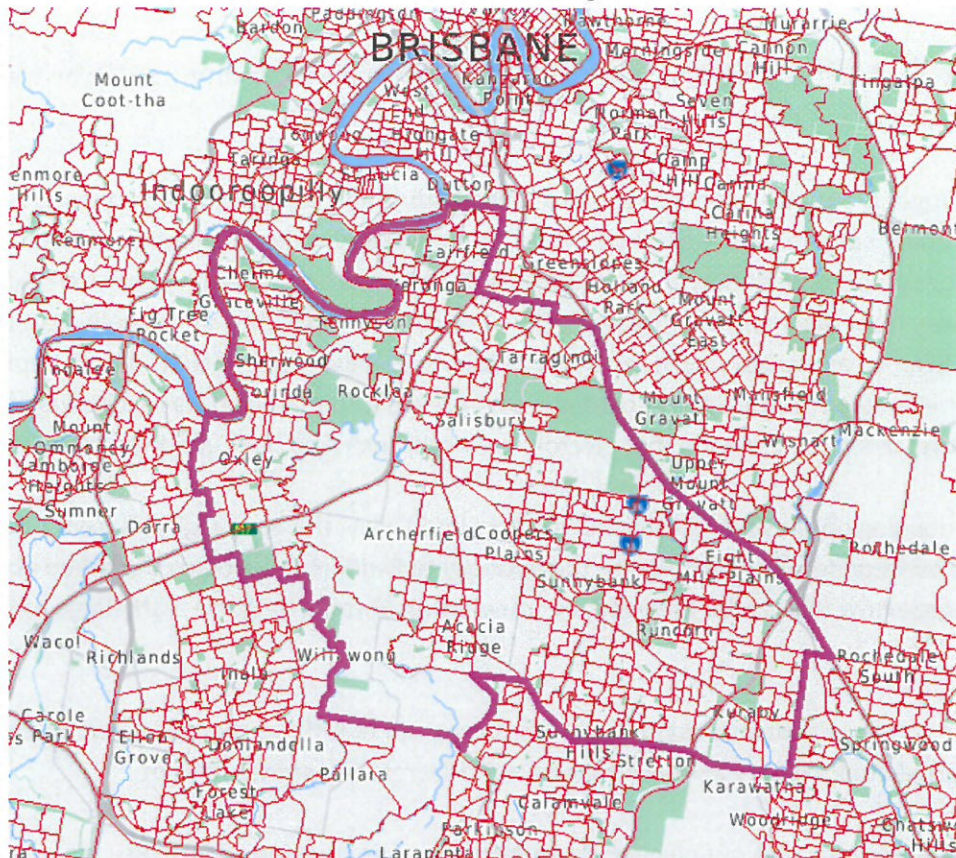
It makes sense to transfer a modest number of electors are from Griffith to Moreton, as shown, in a way that improves community interests and simplifies the boundaries between these divisions. The ALP and LNP submissions essentially propose the same solution of increasing the use of the Pacific Motorway as the boundary between Moreton and Griffith. This solution is supported, although it is noted that fewer SA1s can be transferred in order to achieve the quotas for Moreton and Griffith. The Pacific Motorway is a sensible, readily-identifiable boundary and its use should be extended in this way. This change will also simplify the boundaries.

The Greens submission should be rejected. It proposes incredibly drastic changes to Moreton, Griffith and Bonner which are statistically unnecessary, needlessly disenfranchise electors, and it implies that the previous Redistribution Committee did not meet the community interest test.

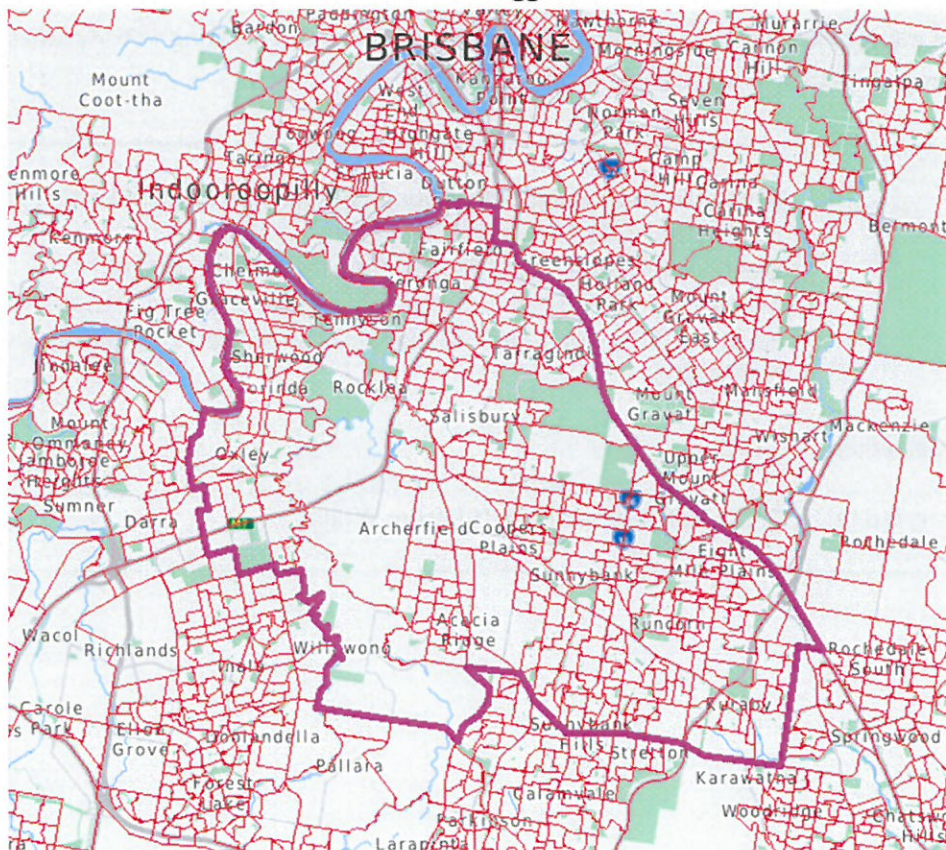
Note from the maps below how these suggestions have the benefit of creating a Moreton looks 'squarer' because it clumps together more contiguous areas and better utilises the Pacific Motorway as a boundary.

Changes:	The rest of Tarragindi SA2 moved from Griffith More of Annerley SA2 moved into Griffith (3105204-11)
Electors transferred out:	0
Electors transferred in:	4,220

Moreton - existing



Moreton - suggested



Oxley

Oxley is under-quota at the projection date so a moderate number of electors need to be transferred into Oxley from adjacent divisions.

The Brisbane River is a readily identifiable and a longstanding and effective boundary between many divisions, including between Oxley and Ryan. It forms a physically wider and clearer divide than any roads, railway lines or suburb boundaries, and it delineates different communities of interest on either side of the River all the way from Moreton Bay to Ipswich LGA. Previous redistributions have deliberately maintained the Brisbane River as a boundary between many divisions, and even extended its use as a consistent boundary, for example the previous redistribution which ensured that Ryan was exclusively north of the River. Therefore, it is recommended that electors are not transferred back into Ryan from Oxley.

Out of the remaining options for transferring electors into Oxley, the most logical is from Fadden, because Oxley is the closest under-quota division to the over-quota Fadden. It is already described above in the analysis for Forde how this can be achieved, by transferring Boronia Heights – Park Ridge SA1 from Forde into Oxley.

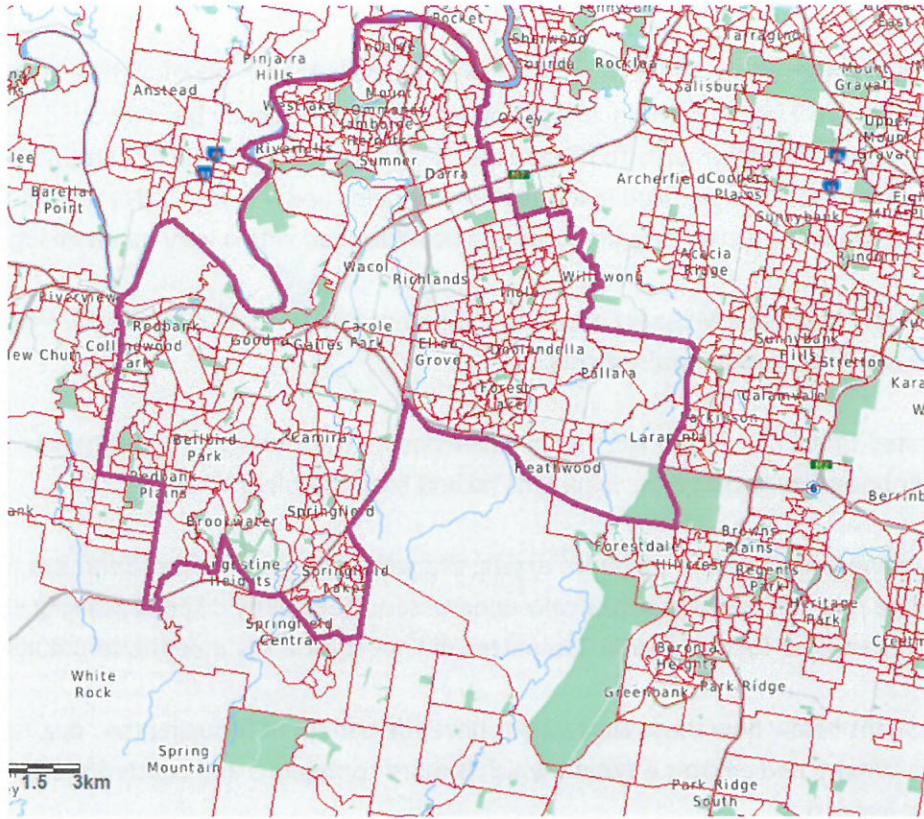
To solidify the community of interest in Oxley, it is suggested that these changes be complemented by the inclusion of Greenbank Military Camp and the part of Hillcrest currently in Wright.

It is also suggested that a part of Collingwood Park-Redbank be transferred into Blair, given the other changes being proposed here and in the interests of best meeting the statistical quotas.

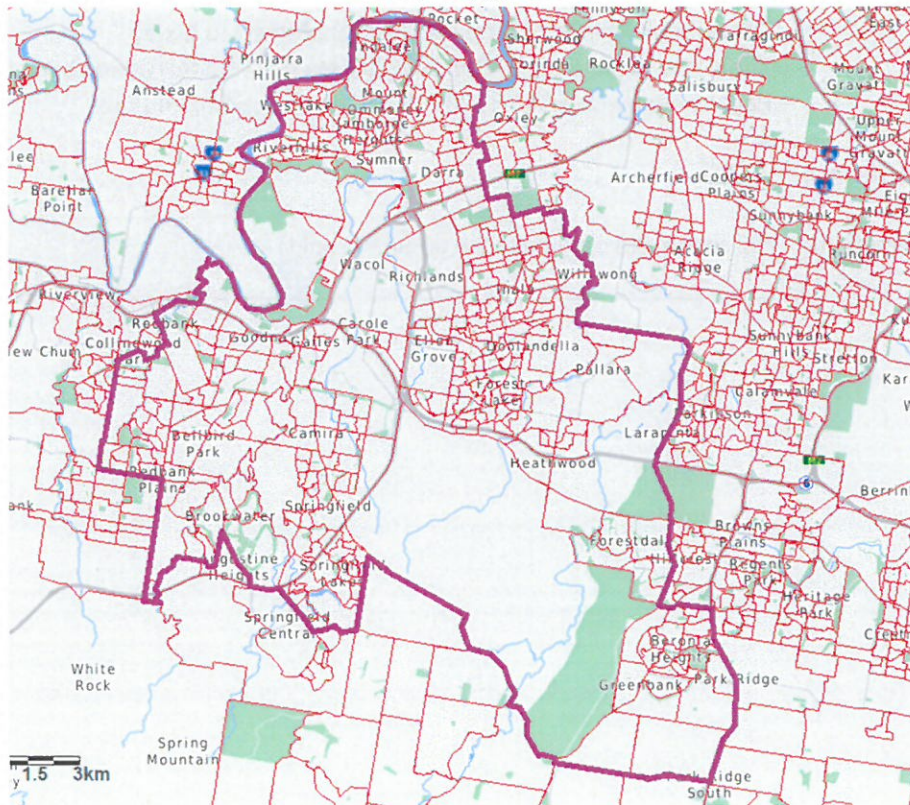
Note from the maps below how these suggestions have the benefit of creating a Oxley looks 'squarer' because it clumps together more contiguous areas.

Changes:	Most of Boronia Heights-Park Ridge be transferred from Forde (3131101-7, 3131110-2, 313114-9, and 3131121-9) Greenbank Military Camp SA2 be transferred from Wright The parts of Hillcrest SA2 in Wright also be transferred (3131615-20) Parts of Collingwood Park-Redbank be transferred into Blair (3129901, 3129903-4, 3129920-3)
Electors transferred out:	1,071
Electors transferred in:	6,431 from Forde and 1,795 from Wright

Oxley - existing



Oxley - suggested



Wright

Wright is currently within quota and it will remain within quota at the projection date. However, making some minor changes to Wright can reduce the “dog-leg” areas it currently has on both its northern and western edges where it stretches up into Greenbank Military Camp and stretches around Rosewood into the Lockyer Valley. The former can be fixed in a way that also helps under-quota Oxley meet its statistical requirements, whereas the latter “dog-leg” area can be addressed with a very minor change.

It is suggested that Greenbank Military Camp and the part of Hillcrest SA2 currently in Wright be moved to Oxley to help it meet its quota requirements.

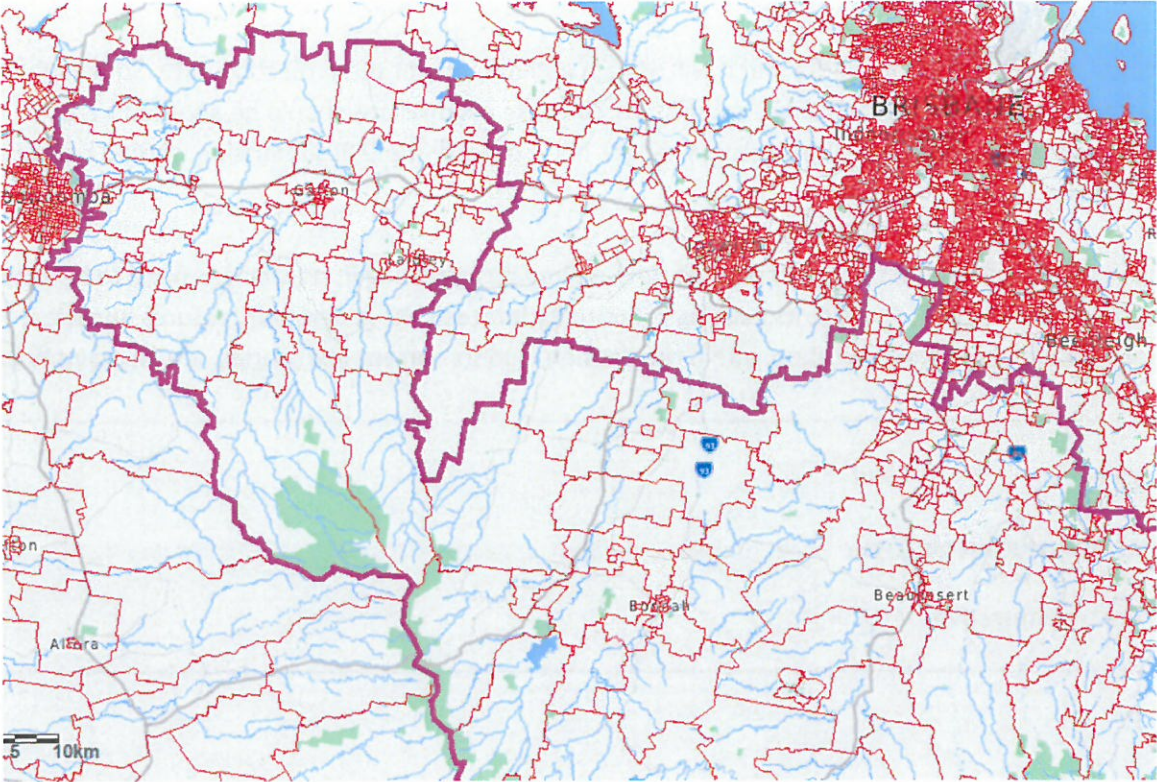
It is also suggested that a part of a single SA1 in Rosewood be transferred into Wright from Blair. This would create a simpler boundary in that area using Johs Rd and Mount Walker W Rd.

These are very minor changes, and the more drastic changes suggested in other submissions, such as by the Greens, should be rejected as being statistically unnecessary, needlessly disenfranchising electors, and implying that the previous Redistribution Committee did not sufficiently meet its community of interest test

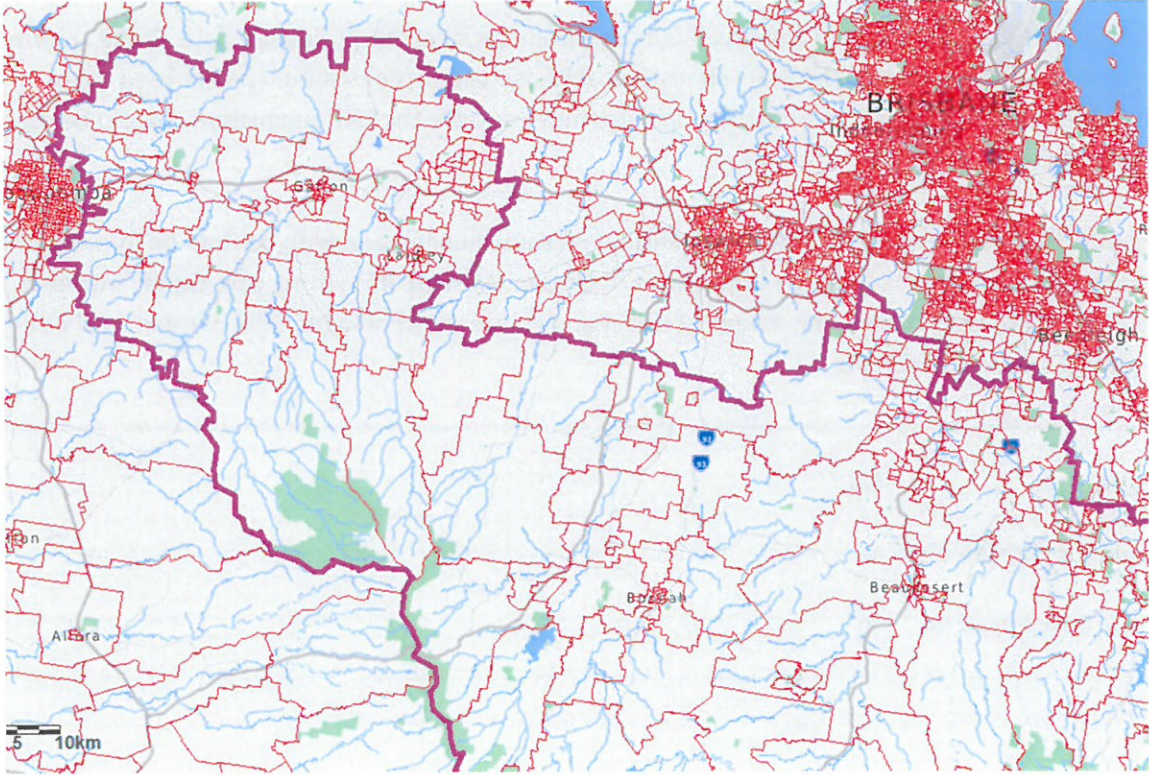
Note from the maps below how these suggestions have the benefit of reducing the “dog-leg” areas that protrudes from Wright, and creates a Wright which is more contiguous and centred around its strongest communities of interest.

Changes:	Greenbank Military Camp SA2 be transferred to Oxley The parts of Hillcrest SA2 in Wright also be transferred to Oxley (3131615-20) Part of Rosewood SA1 3128215 be transferred from Blair
Electors transferred out:	1,795
Electors transferred in:	82 (estimate only because an SA1 is split)

Wright – north-west boundary - existing



Wright – north-west boundary - suggested



Maranoa

Maranoa is currently within quota and it will remain within quota at the projection date. Some submissions proposed no change, notably the ALP submission, so those submissions should be adopted here. Submissions which proposed unnecessary changes here, notably the LNP submission, should be rejected as unnecessary.

Being in the corner of the state, and with no flow-on impacts affecting it, no changes need to be made to the boundaries of Maranoa. As such, its existing community interests, its geographic features and area, the means of travel and communication within the division, and its current boundaries, are all maintained.

Changes:	Nil
Electors transferred out:	0
Electors transferred in:	0

Groom

Groom is currently within quota and it will remain within quota at the projection date. Some submissions proposed no change, notably the ALP submission, so those submissions should be adopted here. Submissions which proposed unnecessary changes here, notably the LNP submission, should be rejected as unnecessary.

Being effectively surrounded by Maranoa, which needs no changes, and with no flow-on impacts affecting it, no changes need to be made to the boundaries of Groom. As such, its existing community interests, its geographic features and area, the means of travel and communication within the division, and its current boundaries, are all maintained.

Changes:	Nil
Electors transferred out:	0
Electors transferred in:	0

Blair

Blair is currently within quota and it will remain within quota at the projection date.

However, some minor changes to Blair can reduce the “dog-leg” areas that currently exist in the divisions of Wright (how it stretches around Rosewood into the Lockyer Valley) and Ryan (the old LGA boundary on the north-west end of Ryan). Both of these changes are justified on community of interest grounds, and especially having regard to the look of the overall area of these divisions.

Firstly, it is suggested that a part of a single SA1 in Rosewood be transferred from Blair into Wright. This would create a simpler boundary in that area using Johns Rd and Mount Walker W Rd. Secondly, it is suggested that the single SA1s currently within Ryan from Lake Manchester-England Creek and Lowood and Ipswich North all be transferred into Blair, to create simpler boundaries, reunite whole SA2s together within Blair, and for community of interest reasons given the residents in these areas are more closely situated to the Ipswich-Esk region than they are to the inner west suburbs of Brisbane.

To create even simpler boundaries, it is also suggested that parts of two SA1s in Karana Downs be transferred from Ryan. This would create a simpler boundary between Blair and Ryan, starting from the Brisbane River, to the bridge and Stumers Rd, to Mount Crosby Rd, to Camerons Creek to Mill Rd.

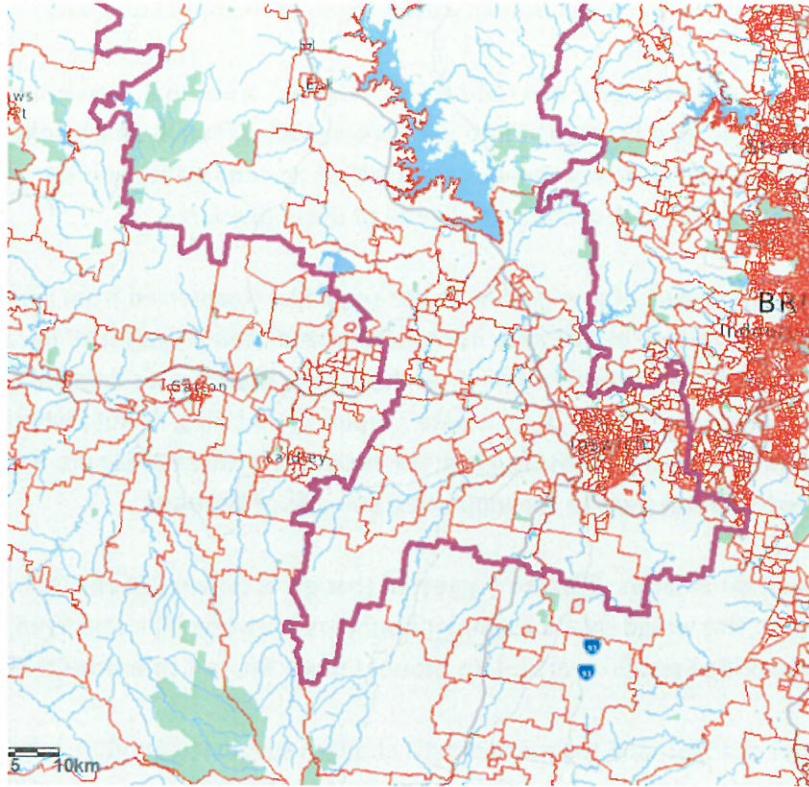
These are fairly minor changes, and the more drastic changes suggested in other submissions, notably the submission of the Greens, should be rejected as being statistically unnecessary, needlessly disenfranchising electors, and implying that the previous Redistribution Committee did not sufficiently meet its community of interest test.

It is also suggested that a part of Collingwood Park-Redbank be transferred into Blair from Oxley, given the other changes being proposed to Oxley and the aim of best meeting the “one-vote, one value” principle.

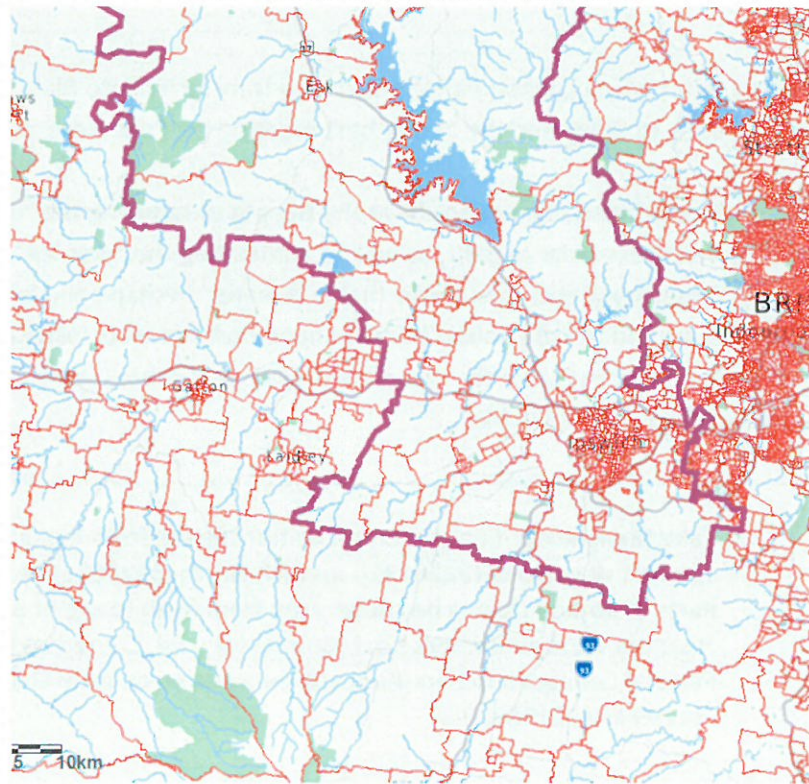
Note from the maps below how these suggestions have the benefit of reducing the “dog-leg” area that protrudes from the south western corner of Blair, as well as eliminating the “dog-leg” area that sticks into Blair from Ryan. Broadly, these changes create a Blair that is ‘squarer’ in shape and is comprised of more contiguous areas especially around the previously thinner shape that connects Ipswich with the Somerset Valley communities of interest that make up the two ends of Blair. It is submitted that this strongly improves the communities of interest represented in Blair.

Changes:	Lake Manchester-England Creek be transferred from Ryan The rest of Lowood (3128121), Ipswich North (3128811) be transferred from Ryan Parts of Karana Downs be transferred from Ryan (parts of 3129010 and 3129011 that are west of Stumers Rd, Mount Crosby Rd, Camerons Ck and Mill Rd) Parts of Collingwood Park-Redbank be transferred from Oxley (3129901, 3129903-4, 3129920-3)
Electors transferred out:	82 (estimate only because an SA1 is split)
Electors transferred in:	1,071 from Oxley, 385 from Ryan (estimate only because two SA1s are split)

Blair – southern boundary - existing



Blair – southern boundary - suggested



Ryan

Ryan is currently within quota and it will remain within quota at the projection date.

However, some minor changes to Ryan can reduce the “dog-leg” area that currently projects from its north-western corner, simplify the boundary between Ryan and Blair, and reunite some whole SA2s together in Blair like Ipswich North and Lowood.

Firstly, it is suggested that the single SA1s currently within Ryan from Lake Manchester-England Creek and Lowood and Ipswich North all be transferred into Blair, to create simpler boundaries, reunite whole SA2s together within Blair, and for community of interest reasons given the residents in these areas are more closely situated to the Ipswich-Esk region than they are to Ryan’s west Brisbane suburbs.

Secondly, to create even simpler boundaries, it is also suggested that parts of two SA1s in Karana Downs be transferred into Blair. This would create a simpler boundary between Blair and Ryan, starting from the Brisbane River, to the bridge and Stumers Rd, to Mount Crosby Rd, to Camerons Creek to Mill Rd.

These are fairly minor changes, and the more drastic changes suggested in other submissions, notably the submission of the Greens, should be rejected as being statistically unnecessary, needlessly disenfranchising electors, and implying that the previous Redistribution Committee did not sufficiently meet its community of interest test.

Transferring more of Enoggera SA2 from Brisbane into Ryan also has two benefits. It reunites all of the suburb of Gaythorne and more of Enoggera in Ryan where the Enoggera Army Barracks is already located. This will enhance the existing community interests around the military base. It also greatly simplifies the boundary here by using Wardell Street between Lloyd Street and the Kedron Brook. This is a far better and simpler boundary than is currently used.

These changes are simpler and less drastic than what is proposed in other submissions. It also makes sense in the context of the overall community of interests represented in the division of Ryan, being the west suburbs of Brisbane, the Gap, and the north-west Brisbane LGA suburbs situated along Samford Road and the Ferny Grove railway line. The changes proposed here would remove only areas that are least connected to these community interests, such as areas closest to Ipswich.

By way of comparison, the ALP submission here suggests a two-way transfer between Ryan and Brisbane. Not only is that statistically unnecessary, it needlessly disenfranchises electors, and it implies that the previous Redistribution Committee did not sufficiently meet the community interest tests. Even worse, the result would be a “dog-leg” area sticking out of the boundary of Brisbane at the point furthest away from the CBD and the Brisbane River. Refer to earlier comments about why “dog-leg” areas imply partisan influence in electoral boundaries and should be avoided. It is very difficult to justify on community interest grounds given it worsens the split in suburbs like Ashgrove, Dorrington and Enoggera, and it should be rejected.

The Greens submission should likewise be rejected. It proposes incredibly drastic changes to Ryan, Brisbane and Lilley which are statistically unnecessary, needlessly disenfranchise electors, and it implies that the previous Redistribution Committee did not meet the community interest test.

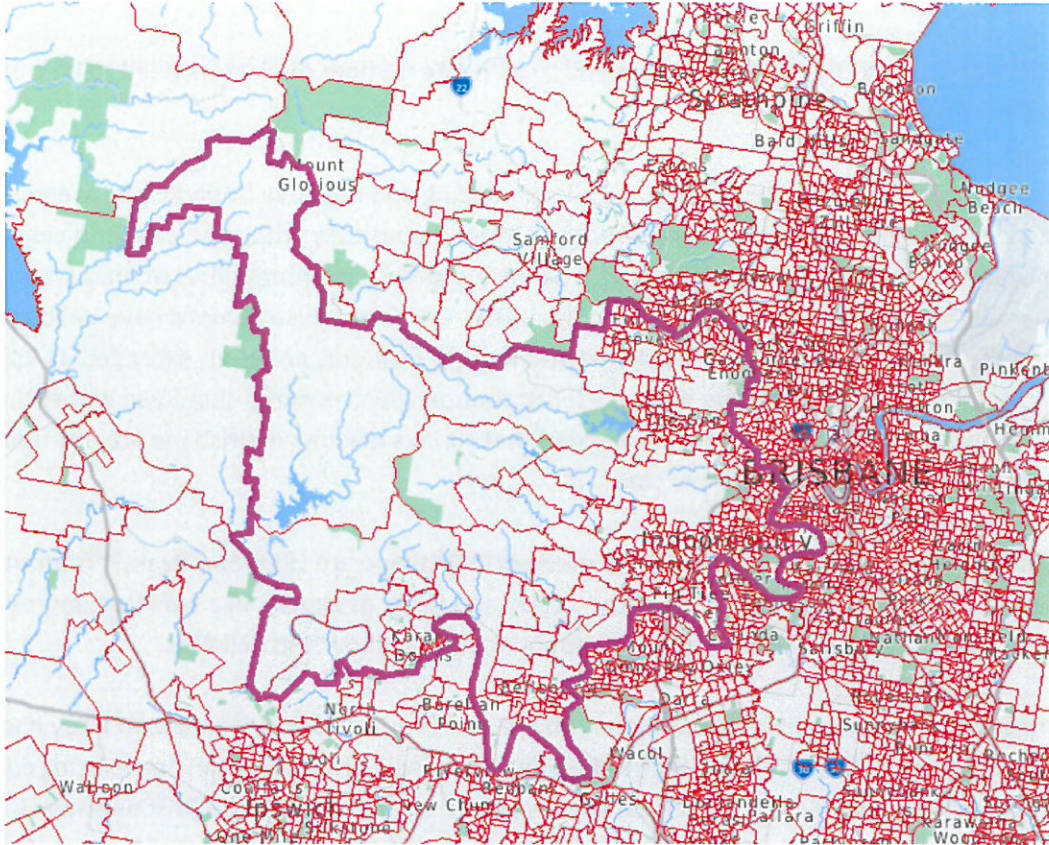
Note from the maps below how these suggestions have the benefit of reducing the “dog-leg” area that protrudes from the north western corner of Ryan. Broadly, these changes create a Ryan that is tighter in shape and is comprised of more contiguous areas which reinforces and improves the communities of interest represented in Ryan.

Changes: Lake Manchester-England Creek be transferred to Blair
 The rest of Lowood (3128121), Ipswich North (3128811) be transferred to Blair
 Parts of Karana Downs be transferred from Blair (parts of 3129010 and 3129011
 that are west of Stumers Rd, Mount Crosby Rd, Camerons Ck and Mill Rd)
 More of Enoggera SA2 be reunited from Brisbane (3109810, 3109813-7)

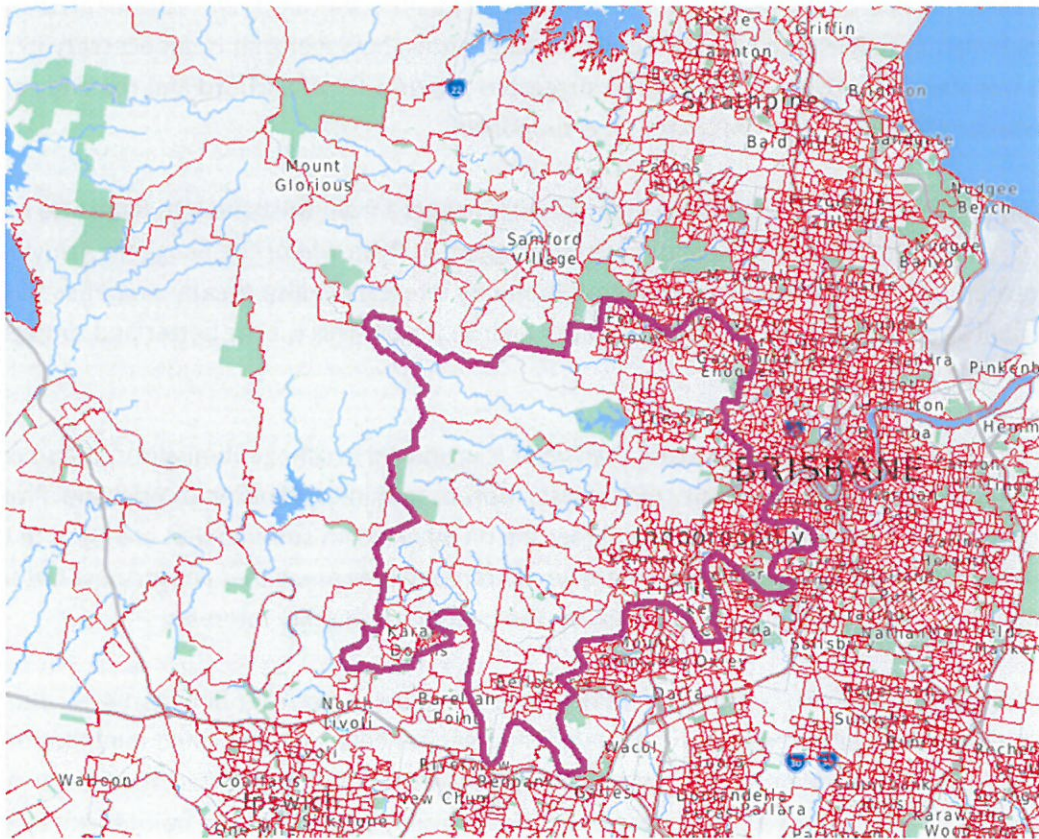
Electors transferred out: 385 (estimate only because two SA1s are split)

Electors transferred in: 1,549

Ryan - existing



Ryan - suggested



Brisbane

Brisbane is over-quota at the projection date and a moderate number of electors need to be transferred to adjacent divisions.

The Brisbane River is a readily identifiable and a longstanding and effective boundary between many divisions, including between Brisbane and Griffith. It forms a physically wider and clearer divide than any roads, railway lines or suburb boundaries, and it delineates different communities of interest on either side of the River all the way from Moreton Bay to Ipswich LGA. Previous redistributions have deliberately maintained the Brisbane River as a boundary between many divisions, and even extended its use as a consistent boundary, for example the previous redistribution which ensured that Ryan was exclusively north of the River. Therefore, it is strongly recommended that surplus electors in Brisbane are not transferred to Griffith, which is itself over-quota in any case.

The remaining options for transferring surplus electors in Brisbane are Lilley and Ryan. It is proposed that a small number of electors are transferred both to Lilley and Ryan, as shown, in a way that improves community interests and greatly simplifies the boundaries between these divisions.

Transferring the remainder of Stafford and that tiny part of Everton Park in Brisbane to Lilley has two benefits. It reunites all of Stafford and Stafford Heights in a single division, enhancing existing community interests. It also makes the Kedron Brook a more consistent boundary between Brisbane and Lilley. This is a far neater boundary because the Kedron Brook is already the boundary from Eagle Farm to Lutwyche, and again around Enoggera. Future redistributions may warrant the transfer of Gordon Park to Lilley as well, which would make Kedron Brook an easy, single boundary all the way along the edge of Brisbane and Lilley. The LNP submission suggests the transfer of Gordon Park now, however that is unnecessary to meet the quotas at this stage. The LNP submission also suggested the transfer of Stafford and the tiny part of Everton Park as proposed above, and to that extent it is supported.

Transferring the remainder of Gaythorne and more of Enoggera from Brisbane into Ryan also has two benefits. It reunites all of Gaythorne and more of Enoggera in Ryan where the Enoggera Army Barracks is already located. This will enhance the existing community interests. It also greatly simplifies the boundary by using Wardell Street between Lloyd Street and the Kedron Brook. This is a far better and simpler boundary than is currently used.

These changes are simpler and less drastic than what is proposed in other submissions. It also makes sense in the context of the overall community of interests represented in the division of Brisbane. Previous redistributions have made Brisbane a division focused on inner-north suburbs that are close to the CBD and the Brisbane River. The changes proposed here would remove only areas that are furthest out from the CBD and the Brisbane River, reinforcing and solidifying the overall community interests.

By way of comparison, the ALP submission here suggests a two-way transfer between Ryan and Brisbane. Not only is that statistically unnecessary, it needlessly disenfranchises electors, and it implies that the previous Redistribution Committee did not sufficiently meet the community interest tests. Even worse, the result would be a "dog-leg" area sticking out of the boundary of Brisbane at the point furthest away from the CBD and the Brisbane River. Refer to earlier comments about why "dog-leg" areas imply partisan influence in

electoral boundaries and should be avoided. It is very difficult to justify on community interest grounds given it worsens the split in suburbs like Ashgrove, Dorrington and Enoggera, and it should be rejected.

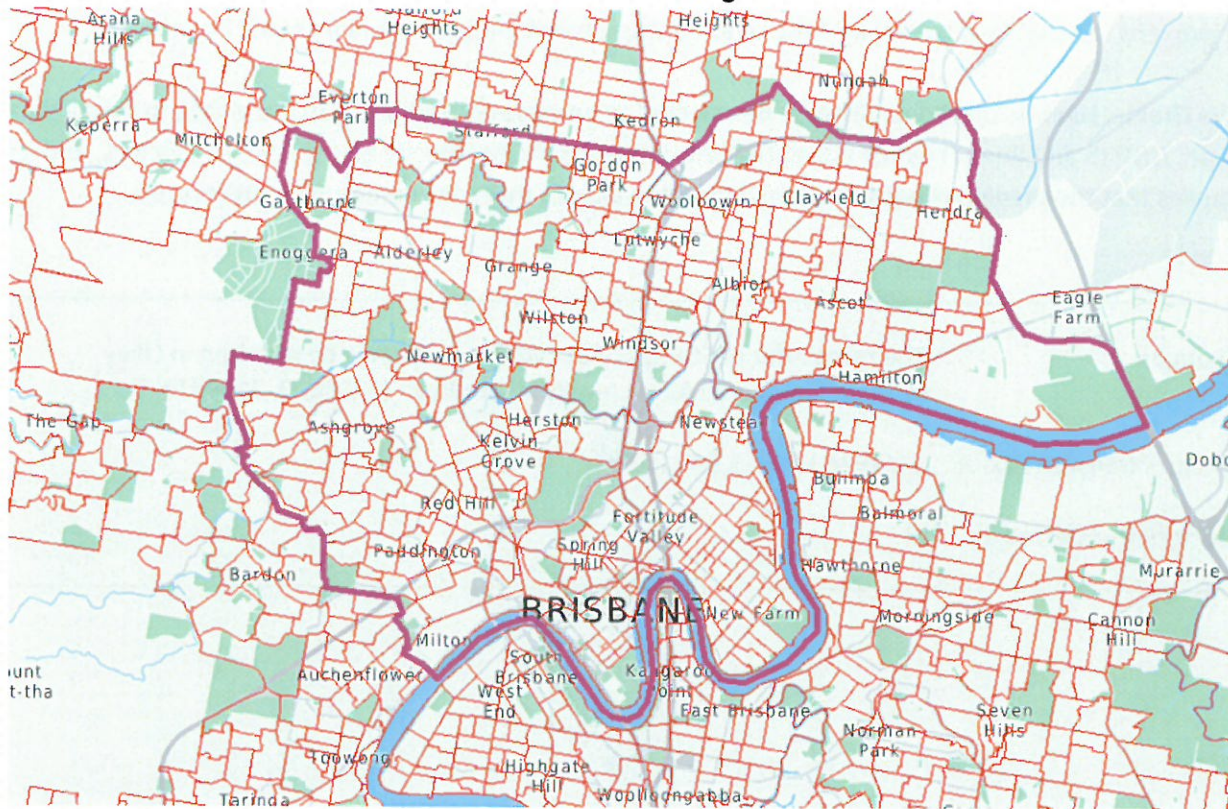
The Greens submission should likewise be rejected. It proposes incredibly drastic changes to Brisbane, Lilley, Ryan, Griffith and Bonner which are statistically unnecessary, needlessly disenfranchise electors, and it implies that the previous Redistribution Committee did not meet the community interest test.

Changes:	The remainder of Stafford and Everton Park SA2s be reunited in Lilley More of Enoggera SA2 be reunited into Ryan (3109810, 3109813-7)
----------	--

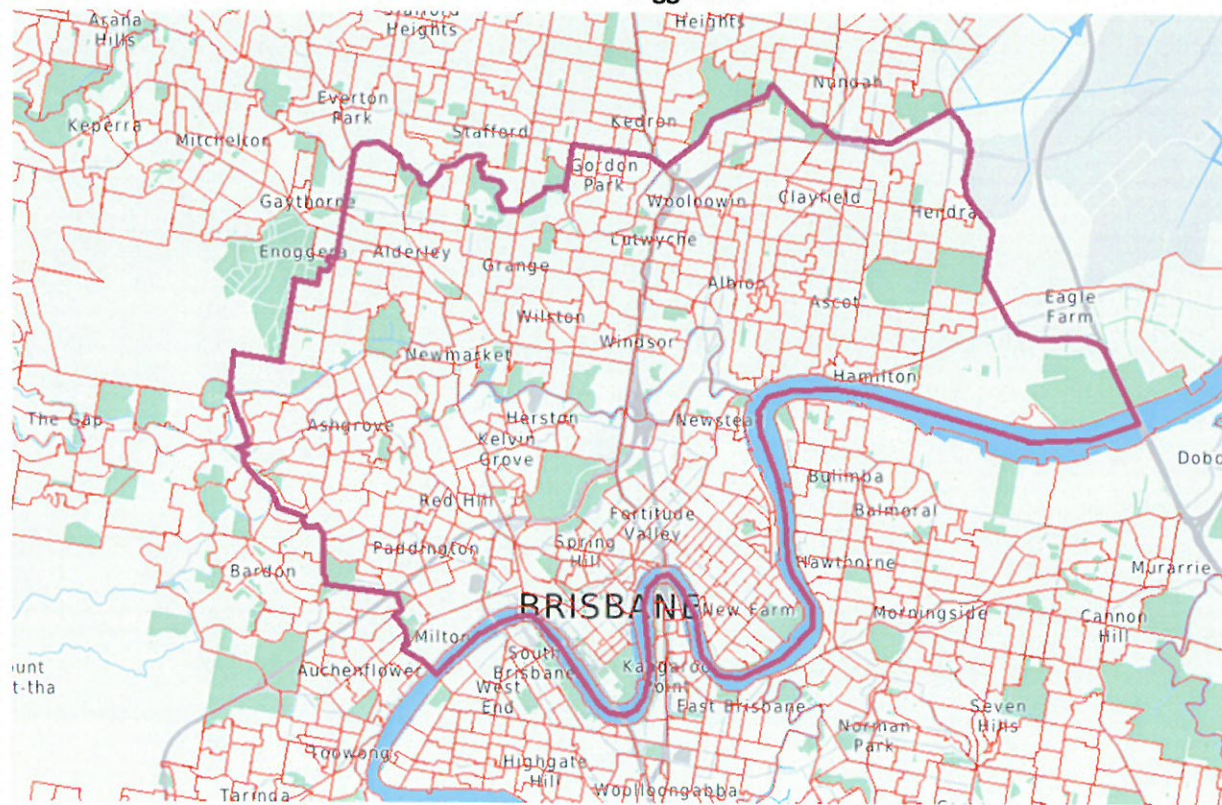
Electors transferred out:	1,159 to Lilley, 1,549 to Ryan
---------------------------	--------------------------------

Electors transferred in:	0
--------------------------	---

Brisbane - existing



Brisbane - suggested



Lilley

Lilley is over-quota at the projection date and a moderate number of electors need to be transferred to adjacent divisions.

Given that the division of Brisbane is also over-quota, the remaining options for transferring surplus electors in Lilley are Petrie and Dickson.

Firstly, as discussed above in the analysis of Brisbane, it is suggested that the remainder of Stafford and that tiny part of Everton Park in Brisbane be transferred into Lilley for two reasons. It reunites all of Stafford and Stafford Heights in a single division, enhancing existing community interests. It also makes the Kedron Brook a more consistent boundary between Brisbane and Lilley. This is a far neater boundary because the Kedron Brook is already the boundary from Eagle Farm to Lutwyche, and again around Enoggera. Future redistributions may warrant the transfer of Gordon Park to Lilley as well, which would make Kedron Brook an easy, single boundary all the way along the edge of Brisbane and Lilley. The LNP submission suggests the transfer of Gordon Park now, however that is unnecessary to meet the quotas at this stage. The LNP submission also suggested the transfer of Stafford and the tiny part of Everton Park as proposed above, and to that extent it is supported.

It is suggested that a significant number of electors are transferred to Dickson, in a way that is broadly consistent with other submissions such as those of the ALP and LNP, but is more consistent with communities of interest that need to be better defined in the northern suburbs of Brisbane.

It was noted at the beginning of these comments, in the discussion of the worst “dog-leg” areas sticking out from the boundaries of divisions, how Petrie has historically included a long narrow stretch of geography southwards through Bracken Ridge and Aspley. It previously went all the way to the inner-city suburb of Stafford but recent redistributions have reduced it somewhat. It is strongly recommended that this trend of reducing this “dog-leg” tail of Petrie be continued in this redistribution. It is a trend that will likely be supported and justified in future redistributions as the population around Redcliffe and North Lakes continues to grow.

It is therefore suggested that the transfer of electors from Lilley to Dickson be more significant than is proposed in other submissions, to allow for a transfer of electors from the tail of Petrie into Lilley that will strengthen the communities of interest represented in all of these divisions.

Specifically, it is proposed that Lilley lose to Dickson the SA2 of Bridgeman Downs, most of McDowall and part of Everton Park. This suggestion is broadly in line with most major party submissions in this area, including both the ALP and LNP.

It is a sensible suggestion because the suburbs of Bridgeman Downs and McDowall are very similar in demographic composition and community interests to the neighbouring suburbs of Albany Creek and Eatons Hill, which are already within Dickson. However, most of the other submissions attempt these changes in a way that appears awkward or disjointed, and does not draw neat or sensible boundaries between Dickson and Lilley.

For this reason, and for the benefit of creating better, simpler boundaries between all three divisions centred on the northside suburbs, it is proposed that parts of Everton Park be included in this transfer, so that the boundary can be described as:

Enoggera Creek (current boundary) – South Pine Rd – Old Northern Rd – Flockton St – Trouts Rd – a line (the Trouts Rd road reserve) – Trouts Rd – Albany Creek Rd (current boundary).

This is a simpler, more easily-recognised boundary which should better stand the test of time than some other boundaries suggested in the major party submissions.

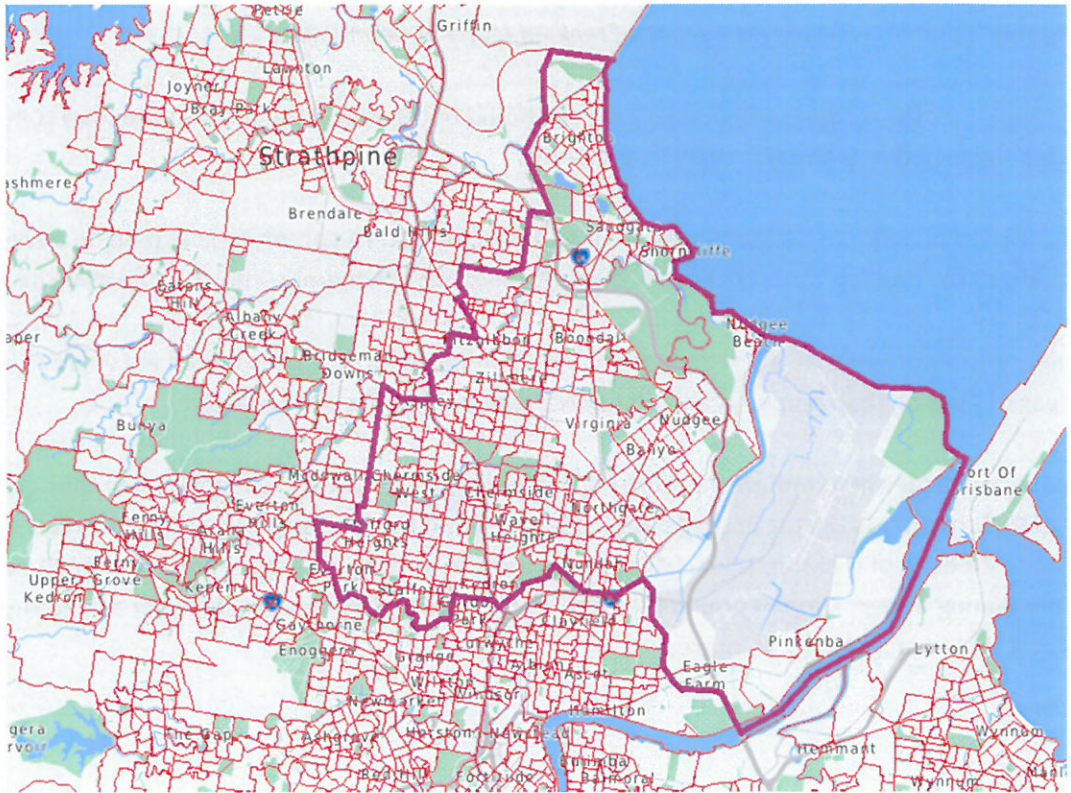
Note from the maps below, for all of Lilley, Petrie and Dickson, how these suggestions have the benefit of reducing the “dog-leg” tail of Petrie and create better, simpler boundaries between all three divisions which better define the northside suburbs. Broadly, these changes create a Lilley that is ‘squarer’ in shape and is comprised of more contiguous areas which reinforces and improves the communities of interest represented in Lilley, namely the Moreton bayside suburbs and the middle northern suburbs clustered around Chermside and Kedron.

Changes:	The remainder of Stafford and Everton Park be reunited in Lilley from Brisbane More of Aspley be reunited in Lilley from Petrie (3102708-12) More of Taigum-Fitzgibbon SA2 be reunited in Lilley from Petrie (3102506-7, 3102509, 3102513-15, 3102517, and the part of 3102512 that is east of Norris Rd) An area of Carseldine with zero population be transferred from Petrie (3102416) Part of Bracken Ridge be moved from Petrie (3104126-7) The parts of Bridgeman Downs SA2 in Lilley be moved to Dickson Most of McDowall SA2 be moved to Dickson (3102601-7, 3102610-18) The parts of Everton Park west of Old Northern Rd and South Pine Rd be moved to Dickson (3102503-9, 3102515, and 3102518-9)
Electors transferred out:	12,232
Electors transferred in:	1,159 from Brisbane, 5,113 from Petrie (estimate only because an SA1 is split)

Lilley - existing



Lilley - suggested



Dickson

Dickson is currently within quota and it will remain within quota at the projection date.

However, given that Brisbane and Lilley nearby are both over-quota, and given the need discussed above to continue to address the “dog-leg” area sticking out of Petrie, a number of changes are suggested for Dickson.

Firstly, it is proposed that Dickson gain areas from the over-quota Lilley, specifically Bridgeman Downs, most of McDowall and part of Everton Park. This suggestion is broadly in line with most major party submissions in this area, including both the ALP and LNP.

It is a sensible suggestion because the suburbs of Bridgeman Downs and McDowall are very similar in demographic composition and community interests to the neighbouring suburbs of Albany Creek and Eatons Hill, which are already within Dickson. However, most of the other submissions attempt these changes in a way that appears awkward or disjointed, and does not draw neat or sensible boundaries between Dickson and Lilley.

For this reason, and for the benefit of creating better, simpler boundaries between all three divisions centred on the northside suburbs, it is proposed that parts of Everton Park be included in this transfer, so that the boundary can be described as:

Enoggera Creek (current boundary) – South Pine Rd – Old Northern Rd – Flockton St – Trouts Rd – a line (the Trouts Rd road reserve) – Trouts Rd – Albany Creek Rd (current boundary).

This is a simpler, easily recognised boundary which should better stand the test of time than some other boundaries suggested in the major party submissions.

Secondly, it is proposed that Dickson loses areas in its north-eastern corner, to Longman, in a way that will help to address to “dog-leg” area that currently protrudes out of Longman into Dakabin and Kallangur.

Specifically, it is proposed that the remainder of Dakabin-Kallangur SA2 be reunited in Longman, along with some areas of Kurwongbah immediately west of Narangba, Dakabin and Kallangur.

Broadly, these changes help reduce the “dog-leg” areas in both Petrie and Longman, and they create a division of Dickson that is tighter in shape and is comprised of more contiguous areas. It can be seen in the maps below, for each of Dickson, Lilley, Longman and Petrie, how these suggestions combined have the benefit of creating better, simpler boundaries between all these divisions which better define the northside suburbs and their communities of interest.

Changes: The part of Bridgeman Downs SA2 in Lilley be moved to Dickson
Most of McDowall SA2 be moved from Lilley (3102601-7, 3102610-18)
The parts of Everton Park west of Old Northern Rd and South Pine Rd be
transferred from Lilley (3102503-9, 3102515, and 3102518-9)
The remainder of Dakabin-Kallangur SA2 be moved to Longman
Parts of Kurwongbah, in Dayboro SA2, be moved to Longman (3138405-7,
3138416-7)

Electors transferred out: 8,814

Electors transferred in: 12,232

Petrie

Petrie is currently within quota and it will remain within quota at the projection date.

However, given that nearby Brisbane and Lilley nearby are both over-quota, flow on impacts to Petrie are likely under any solution.

Furthermore, the “dog-leg” area sticking out from the southern end of Petrie justifies further changes here. It was noted at the beginning of these comments, in the discussion of the worst “dog-leg” areas sticking out from the boundaries of various divisions, how Petrie has historically included a long narrow stretch of geography southwards through Bracken Ridge and Aspley. It previously went all the way to the inner-city suburb of Stafford but recent redistributions have reduced it somewhat. It is strongly recommended that this trend of reducing this “dog-leg” tail of Petrie be continued in this redistribution. It is a trend that will likely be supported and justified in future redistributions as the main population base in Petrie, around Redcliffe and North Lakes, continues to grow.

Partially for the purposes of addressing this serious issue, and partially for the purposes of creating more clearly delineated boundaries in the northside suburbs, it was discussed earlier how the transfer of electors from Lilley to Dickson can be managed to allow for a transfer of electors from the tail of Petrie into Lilley that will strengthen the communities of interest represented in all of these divisions.

Specifically, it is suggested that more of Aspley be moved into Petrie from Lilley.

It is also suggested that more of Taigum-Fitzgibbon SA2 be moved in Lilley – everything east of Norris Rd – and lastly that 2 SA1s in Bracken Ridge, and a single SA1 in Carseldine that contains no population, be moved into Lilley, to clump more contiguous areas into the community of interest that is better represented in Lilley.

Broadly, these changes help to continue the trend whereby the “dog-leg” area at the south of Petrie is reducing. Combined with other changes on the northside, the suggestions create a Petrie that is tighter in shape and is comprised of more contiguous areas, better centred on its population base of Redcliffe and North Lakes and Bruce Hwy suburbs. It can be seen in the maps below, for each of Petrie, Lilley, Dickson and Longman, how these suggestions combined have the benefit of creating better, simpler boundaries between all three divisions which better define the northside suburbs and their communities of interest.

Changes:	More of Aspley be reunited in Lilley (3102708-12) More of Taigum-Fitzgibbon SA2 be reunited in Lilley (3102506-7, 3102509, 3102513-15, 3102517, and the part of 3102512 that is east of Norris Rd) An area of Carseldine with zero population be transferred to Lilley (3102416) Part of Bracken Ridge be moved to Lilley (3104126-7)
Electors transferred out:	5,113 (estimate only because an SA1 is split)
Electors transferred in:	0

Petrie - existing



Petrie - suggested



Longman

Longman is currently within quota and it will remain within quota at the projection date.

However, given the changes caused by over-quota north Brisbane divisions, and given neighbouring Fisher is under-quota, flow-on impacts to Longman are likely under any solution and for this reason changes are proposed in most submissions.

Firstly, it is suggested that Longman gains an area from Dickson that will help to address the existing “dog-leg” looking area that currently protrudes out of the southern end of Longman into Dakabin and Kallangur.

Specifically, it is proposed that the remainder of Dakabin-Kallangur SA2 be reunited in Longman, from Dickson, along with some areas of Kurwongbah immediately west of Narangba, Dakabin and Kallangur.

Secondly, to help under-quota Fisher meet its statistical requirements, it is proposed that Longman lose excess electors north to Fisher, in a similar way to that proposed in some other major party submissions such as the ALP and LNP. This includes Woodford-D’Aguilar SA2, parts of Wamuran, and all of Elimbah.

It is of no statistical consequence, but for the sake of the shapes and areas of the two divisions, it is also suggested that the top half of Bribie Island (containing no residents) be transferred to Fisher. This used to be the boundary in previous years and makes sense in the context of the Pumicestone Passage being accessed from the communities at both ends – Caboolture and Caloundra.

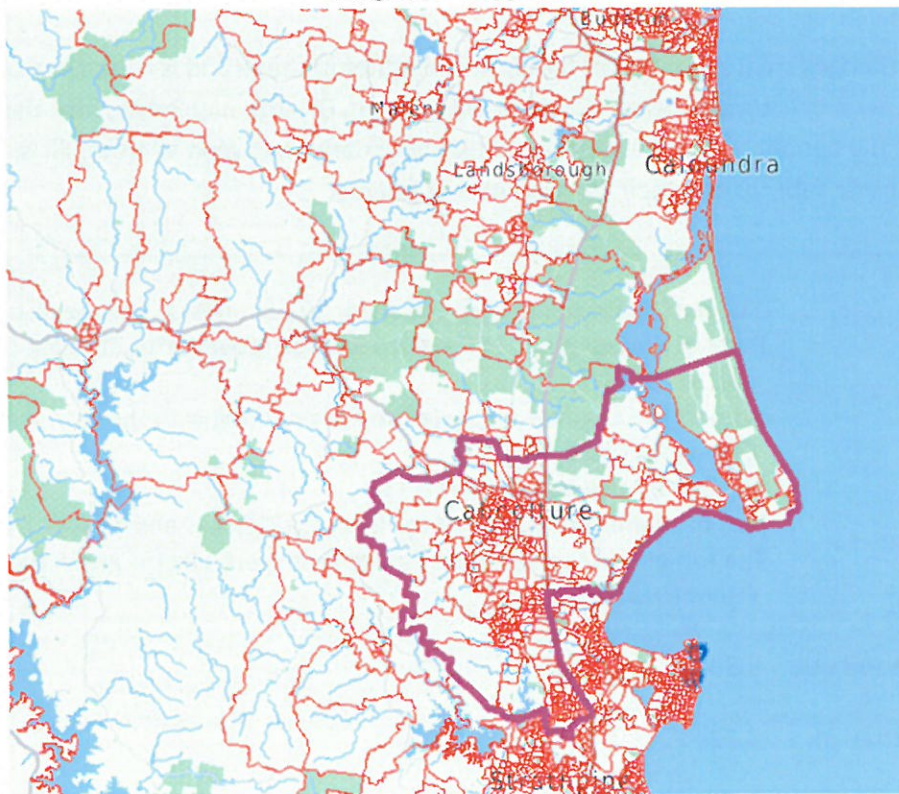
Broadly, these changes create a Longman that is much tighter in shape and is comprised of more contiguous areas. It can be seen in the maps below, for each of Longman, Dickson and Petrie, how these suggestions combined have the benefit of creating better, simpler boundaries between all three divisions which better define the northside suburbs and their communities of interest.

Changes:	The remainder of Dakabin-Kallangur SA2 be moved from Dickson Parts of Kurwongbah, in Dayboro SA2, be moved from Dickson (3138405-7, and 3138416-7) Woodford-D’Aguilar be moved to Fisher, along with the tiny part of 3144014 from Caloundra Hinterland SA2 Elimbah be moved to Fisher Part of Wamuran be moved to Fisher (3136904-5 and 3136907-8) The top end of Pumicestone Passge (with zero elector population) be moved to Fisher (3136320)
Electors transferred out:	9,398
Electors transferred in:	8,814

Longman - existing



Longman - suggested



Fisher

Fisher is under-quota at the projection date and a moderate number of electors need to be transferred into Fisher from adjacent divisions.

In line with other submissions, such as the ALP and LNP submissions, it is proposed that Fisher gain the Woodford-D'Aguilar SA2 from Longman. Furthermore, as is discussed above in the analysis for Longman, it is suggested that this area be accompanied by parts of Wamuran, and all of Elimbah.

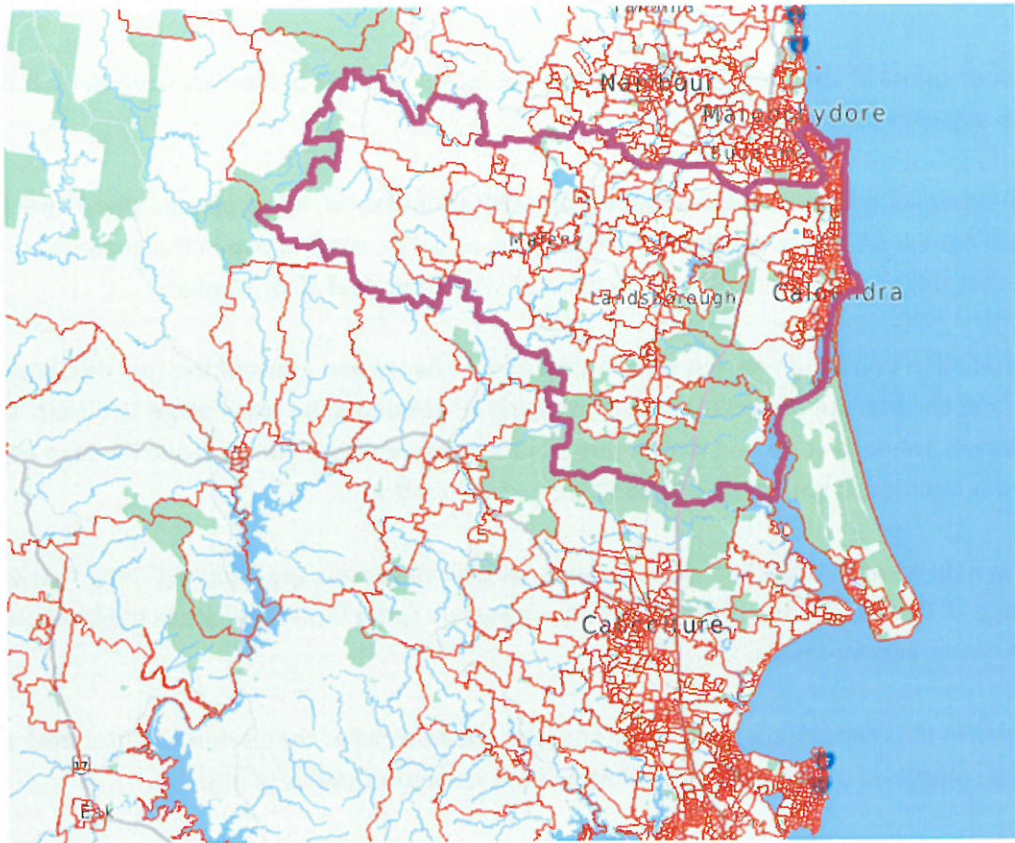
It is of no statistical consequence, but for the sake of the shapes and areas of the two divisions, it is also suggested that the top half of Bribie Island (containing no residents) be transferred to Fisher. This used to be the boundary in previous years and makes sense in the context of the Pumicestone Passage being accessed from the communities at both ends – Caboolture and Caloundra.

Secondly, to help meet its statistical requirements, as well as address the “dog-leg” area that exists on the western edge of Fairfax, it is suggested that Fisher transfers some hinterland areas to Fairfax, around Conondale, Witta and Montville.

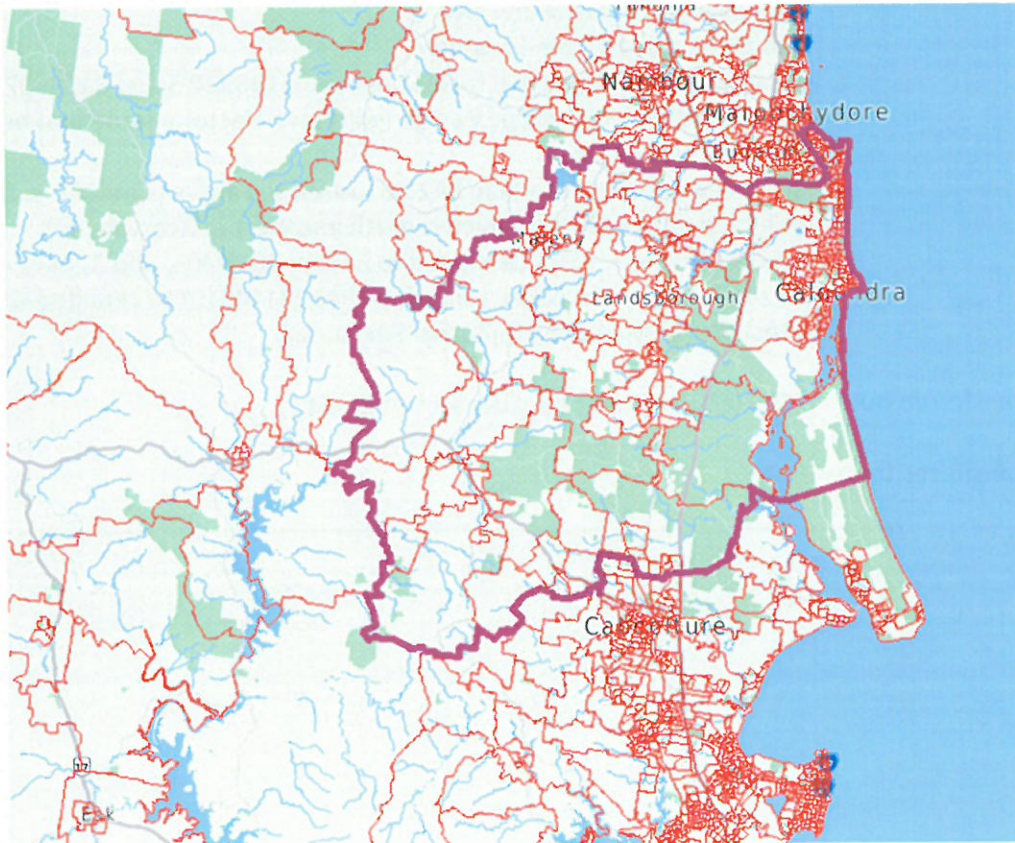
It can be seen in the maps below, how these changes create a Fisher that is much tighter and ‘squarer’ in shape and is comprised of more contiguous and improved communities of interest.

Changes:	Woodford-D'Aguilar be moved from Longman, along with the tiny part of 3144014 from Caloundra Hinterland SA2 Elimbah be moved from Longman Part of Wamuran be moved from Longman (3136904-5 and 3136907-8) The top end of Pumicestone Passge (with zero elector population) be moved from Longman (3136320) Parts of Caloundra Hinterland SA2 be moved to Fairfax (3144001-3, 3144016-9, and the part of 3144015 which is north and west of Reesville Rd) Parts of Palmwoods SA2 be moved to Fairfax (3144403, and 3144417-8) The small part of Maroochy Hinterland SA2 (3144310) be reunited with the remainder of Maroochy Hinterland in Fairfax
Electors transferred out:	2,618 (estimate only because an SA1 is split)
Electors transferred in:	9,398

Fisher - existing



Fisher - suggested



Fairfax

Fairfax is over-quota at the projection date and a moderate number of electors need to be transferred into adjacent divisions.

On this occasion the submission of the ALP is preferred, in terms of transferring the surplus electors to Wide Bay.

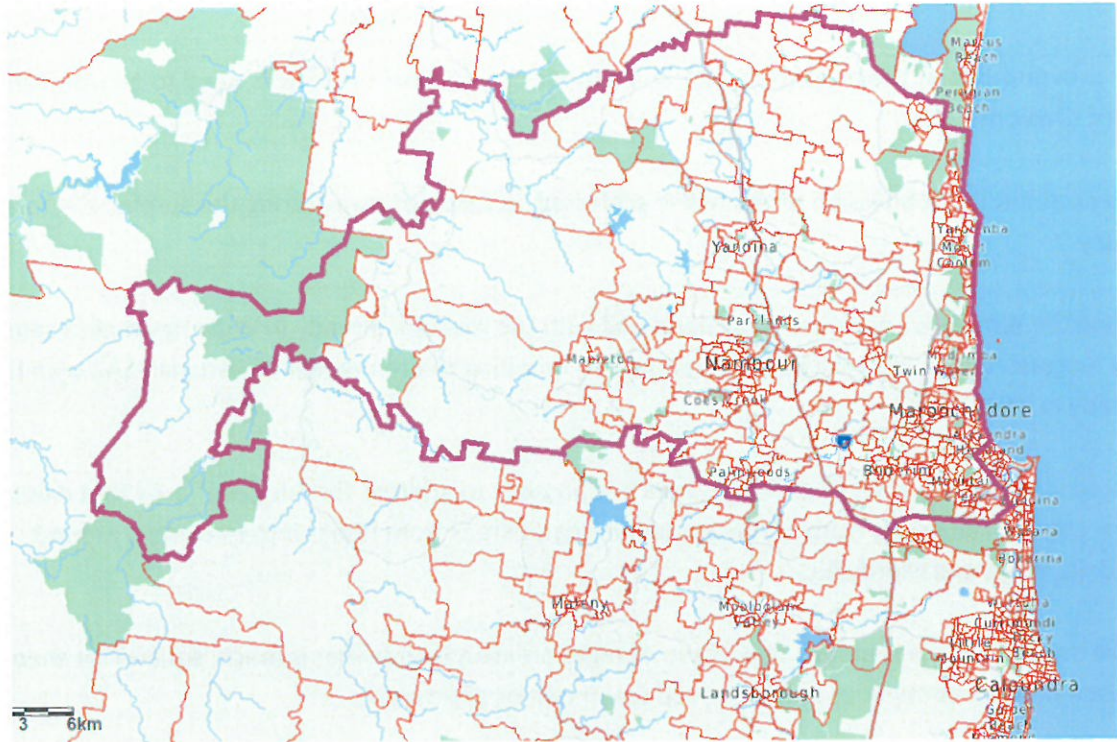
Reuniting the remainder of Noosa Hinterland SA2 with the rest of it already in Wide Bay makes sense. It is further suggested that this area be accompanied by reuniting the remainder of Peregian SA2 with the rest of its already in Wide Bay.

It is noted above in the analysis of Fisher, how it is possible to address the “dog-leg” area that exists on the western edge of Fairfax, by transferring some hinterland areas from Fisher into Fairfax, around Conondale, Witta and Montville.

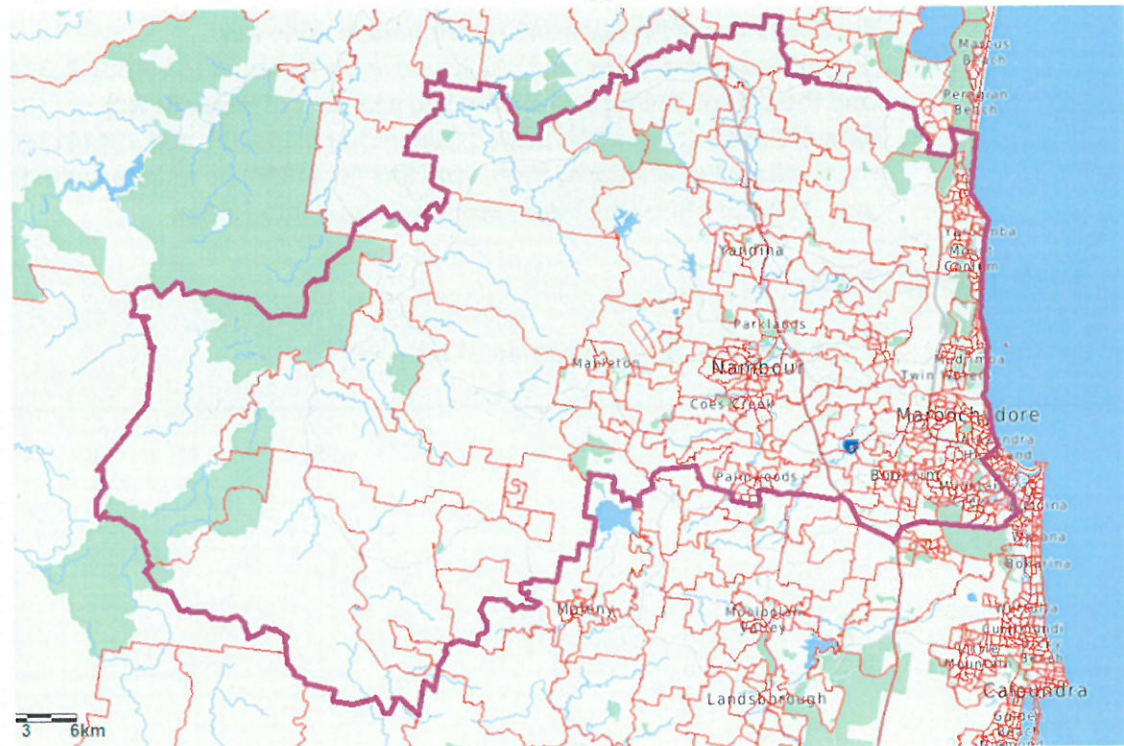
It can be seen in the maps below, how these changes create a Fairfax that is much ‘squarer’ in shape and is comprised of more contiguous and improved communities of interest.

Changes:	The remainder of Noosa Hinterland SA2 be reunited in Wide Bay The remainder of Peregian SA2 be reunited in Wide Bay Parts of Caloundra Hinterland SA2 be moved from Fisher (3144001-3, 3144016-9, and the part of 3144015 which is north and west of Reesville Rd) Parts of Palmwoods SA2 be moved from Fisher (3144403, and 3144417-8) The small part of Maroochy Hinterland SA2 (3144310) be reunited with the remainder of Maroochy Hinterland from Fisher into Fairfax
Electors transferred out:	6,159
Electors transferred in:	2,618 (estimate only because an SA1 is split)

Fairfax - existing



Fairfax - suggested



Wide Bay

Wide Bay is currently within quota and it will remain within quota at the projection date.

However, given that neighbouring Fairfax to the south is over-quota and neighbouring Hinkler to the north is under-quota, changes to Wide Bay are likely under any solution and for this reason changes are proposed in most submissions.

Firstly, in terms of gaining surplus electors from over-quota Fairfax to the south, the submission of the ALP is preferred. Reuniting the remainder of Noosa Hinterland SA2 with the rest of it already in Wide Bay makes sense. It is further suggested that this area be accompanied by reuniting the remainder of Peregian SA2 with the rest of its already in Wide Bay.

Secondly, it is suggested that Hinkler gain electors predominantly from Wide Bay in order to meet its statistical requirements. The submission of the Greens is preferred here, because other submissions make changes that are far too drastic.

In line with the Greens submission, it is suggested that the remainder of Booral-River Heads SA2 is reunited with the rest of it already in Hinkler. Further, that most of the remainder of Burrum-Fraser (except Fraser Island itself) be reunited in Hinkler.

This will make the boundary the River, consistently all the way from Aldershot to Dundathu, which is far simpler and more recognisable than the current boundaries.

Finally, in order to better achieve the principle of “one vote, one value” and better meet statistical requirements, it is suggested that Wide Bay loses an area to Flynn, including the parts of Kingaroy Region North SA2 in Wide Bay, parts of Kilkivan SA2, and part of an SA1 in Maryborough Region South.

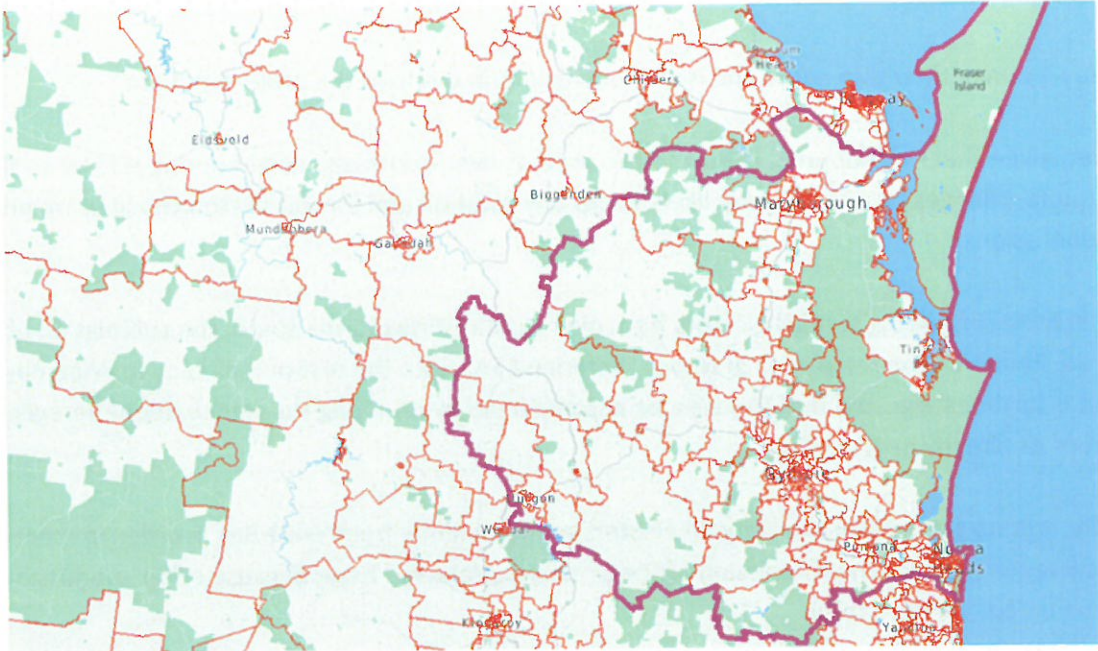
It can be seen in the maps below how these changes create a Wide Bay that is much ‘squarer’ and tighter in shape and is comprised of more contiguous areas.

Changes:	The remainder of Noosa Hinterland SA2 be reunited from Fairfax The remainder of Peregian SA2 be reunited from Fairfax The remainder of Booral-River Heads be reunited into Hinkler Most of the remainder of Burrum-Fraser SA2 be reunited into Hinkler (3152204-6, and 3152208) The parts of Kingaroy Region North SA2 in Wide Bay be moved to Flynn Part of Kilkivan be moved to Flynn (3151501-2, and 3151506-11) A part of a single SA1 in Maryborough Region South (3152510) be moved to Flynn, so that the new boundary is Broweena-Woolooga Rd
----------	--

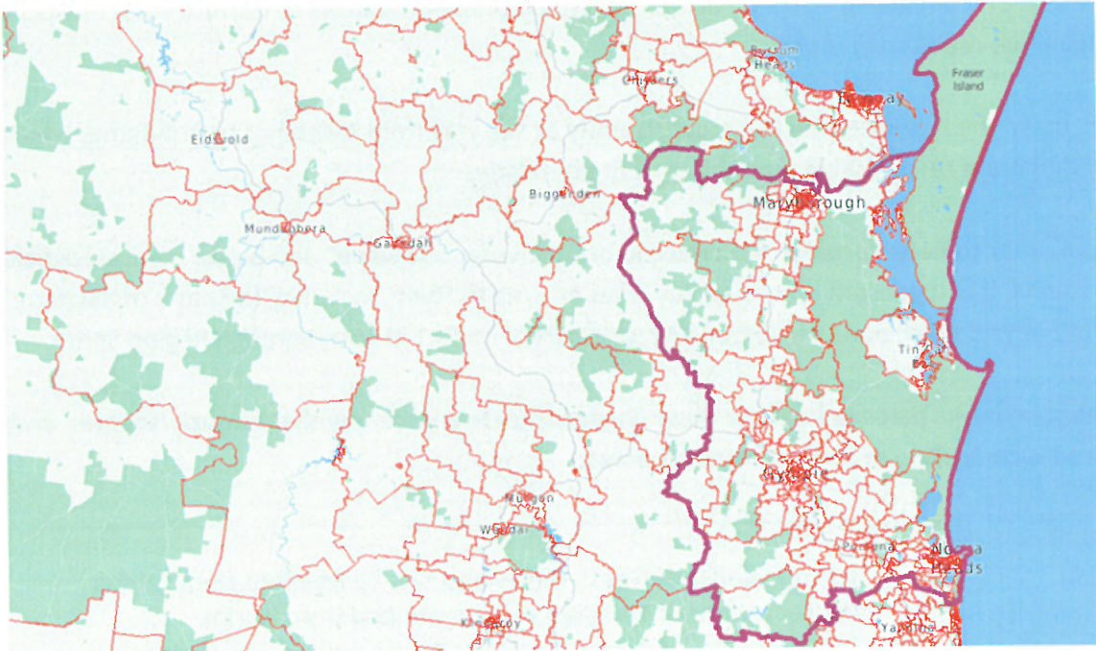
Electors transferred out:	1,043 to Hinkler, and 4,526 to Flynn
---------------------------	--------------------------------------

Electors transferred in:	6,159
--------------------------	-------

Wide Bay - existing



Wide Bay - suggested



Hinkler

Hinkler is under-quota at the projection date and therefore a small number of electors need to be transferred into Hinkler from adjacent divisions.

It is suggested that Hinkler gain electors predominantly from Wide Bay in order to meet its statistical requirements. The submission of the Greens is preferred here, because other submissions make changes that are far too drastic.

In line with the Greens submission, it is suggested that the remainder of Booral-River Heads SA2 is reunited from Wide Bay with the rest of it already in Hinkler. Further, that most of the remainder of Burrum-Fraser be reunited in Hinkler from Wide Bay - except Fraser Island itself.

This will make the boundary between Hinkler and Wide Bay more consistently the River, all the way from Aldershot to Dundathu, which is far simpler and more recognisable than the current boundaries.

It is also proposed, for the purposes of community of interest and the overall shape of the division, that Hinkler gains a single SA1 from Flynn, out of Gayndah-Mundubbera SA2.

It can be seen in the maps below, how these changes create a Hinkler that is much 'squarer' in shape, has simpler boundaries, and is comprised of more contiguous and improved communities of interest.

Changes:	The remainder of Booral-River Heads be reunited from Wide Bay Most of the remainder of Burrum-Fraser SA2 be reunited from Wide Bay (3152204-6, and 3152208) A single SA1 in Gayndah-Mundubbera (3150315) be moved from Flynn
Electors transferred out:	0
Electors transferred in:	1,043 from Wide Bay, and 294 from Flynn

Hinkler - existing



Hinkler - suggested



Flynn

Flynn is currently within quota and it will remain within quota at the projection date.

However, Flynn is at the lower end of the allowable range, so in order to better achieve the principle of “one vote, one value” and better meet statistical aspirations, it is suggested that Flynn gains an area from Wide Bay, including the parts of Kingaroy Region North SA2 in Wide Bay, parts of Kilkivan SA2, and part of an SA1 in Maryborough Region South.

It is also proposed, for the purposes of community of interest and the overall shape of Hinkler, that Flynn loses a single SA1 to Hinkler, out of Gayndah-Mundubbera SA2.

It can be seen in the maps below how these changes create a division of Flynn that is much tidier in shape along its south-eastern corner, has simpler boundaries, and is comprised of more contiguous areas.

Changes:	The parts of Kingaroy Region North SA2 in Wide Bay be moved to Flynn Part of Kilkivan be moved from Wide Bay (3151501-2, and 3151506-11) A part of a single SA1 in Maryborough Region South (3152510) be moved from Wide Bay, so that the new boundary is Broweena-Woolooga Rd A single SA1 in Gayndah-Mundubbera (3150315) be moved to Hinkler
----------	--

Electors transferred out:	294
---------------------------	-----

Electors transferred in:	4,526
--------------------------	-------

Flynn – south-eastern boundary – existing



Flynn - south-eastern boundary – suggested



Capricornia

Capricornia is under-quota at the projection date and therefore a small number of electors need to be transferred into Capricornia from adjacent divisions.

It is suggested that Capricornia gain electors from Dawson in order to meet its statistical requirements. The submission of the ALP is most preferred here, because other submissions make changes that are far too drastic.

Specifically, it is suggested that the remainder of Ooralea-Bakers Creek SA2 is reunited into Capricornia, along with the remainder of Walkerston-Eton SA2. For the purposes of simpler boundaries, which will also better achieve “one vote, one value” in terms of Capricornia’s quota, it is further proposed that three SA1s around the Mackay Airport also be moved into Capricornia from Dawson, , so that the simpler boundaries are created as:

Milton St – Bridge Rd – A line through Quota Park – The Coast

Changes:	The remainder of Ooralea-Bakers Creek SA2 be reunited from Dawson The remainder of Walkerston-Eton SA2 be reunited from Dawson A single SA1 from East Mackay and two SA1s from South Mackay be moved from Dawson, to create simpler boundaries (3134302 and 3134501 and 3135614)
Electors transferred out:	0
Electors transferred in:	1,891

Herbert

Herbert is currently within quota and it will remain within quota at the projection date. The ALP submission proposed no change, so it is supported, whilst other submissions, including from the Greens and LNP, should be rejected for making unnecessary changes.

Because no changes need to be made to the boundaries of Herbert, its existing community interests, its geographic features and area, the means of travel and communication within the division, and its current boundaries, are all maintained.

Changes:	Nil
Electors transferred out:	0
Electors transferred in:	0

Dawson

Dawson is currently within quota and it will remain within quota at the projection date.

However, the neighbouring division of Capricornia to the south is under-quota, so it has been proposed that a small number of electors be transferred from Dawson to Capricornia, at the southern tip of Dawson.

The submission of the ALP is most preferred here, because other submissions make changes that are far too drastic.

Specifically, it is suggested that the remainder of Ooralea-Bakers Creek SA2 is reunited into Capricornia, along with the remainder of Walkerston-Eton SA2. For the purposes of simpler boundaries, which will also better achieve “one vote, one value” in terms of Capricornia’s quota, it is further proposed that three SA1s around the Mackay Airport also be moved from Dawson into Capricornia, , so that the simpler boundaries are created as:

Milton St – Bridge Rd – A line through Quota Park – The Coast

Furthermore, due to changes proposed between Leichhardt and Kennedy to the north of Dawson, which are necessary given that Leichhardt is significantly over-quota at the projection date whereas Kennedy is at the threshold of being under-quota, a small additional change is suggested at the northern end of Dawson.

Specifically, it is proposed that Dawson gain some outer-suburban areas at the edge of Townsville city from Kennedy. These areas include the part of Wulguru-Roseneath SA2 in Kennedy, parts of Townsville South SA2, and an area of Douglas SA2 which only contains a single elector and is projected to contain zero electors at the projection date.

Changes:	The remainder of Ooralea-Bakers Creek SA2 be reunited into Capricornia The remainder of Walkerston-Eton SA2 be reunited into Capricornia A single SA1 from East Mackay and two SA1s from South Mackay be moved into Capricornia, to create simpler boundaries (3134302 and 3134501 and 3135614) The part of Wulguru-Roseneath in Kennedy be moved into Dawson (3149113-4) The part of Douglas SA2 in Kennedy be moved into Dawson (3147417) Part of Townsville-South SA2 be moved from Kennedy (3148901, 3148904, 3148909-10 and 3148913)
----------	--

Electors transferred out:	1,891
---------------------------	-------

Electors transferred in:	933
--------------------------	-----

Kennedy and Leichhardt

Kennedy is at the threshold of being under-quota at the projection date.

Leichhardt is significantly over-quota at the projection date. It is the division furthest from the quota at the projection date.

The surplus electors in Leichhardt must be transferred into Kennedy (the only division which shares a common boundary with Leichhardt). Flow-on effects through other divisions is minimised if the transfer is kept as small as possible.

All of Leichhardt's boundaries, apart from the southern boundary, are fixed by the State border. Along the southern boundary, there is a choice as to whether changes are made to the rural section of the boundary or to the section which passes through the outer suburbs of Cairns.

At some stage, possibly this occasion, the Committee will be justified in creating a division of Leichhardt which is centred solely on the city of Cairns and possibly areas to the near north such as Port Douglas and Daintree. The population of Cairns already justifies a consideration of a change in this direction, and the population growth there makes it a more likely proposition as times passes.

At this stage, it is suggested this choice is a line-ball decision. In the interests of transferring as few electors as possible between the divisions, a combination of the different submissions is suggested.

From the Cape itself, it is justified to reunite the remainder of Tablelands and Carpentaria into Kennedy. This involves the transfer of parts of 2 SA1s only, which are large in geographic area but contain small numbers of electors. It is also suggested to transfer the area around Kowanyama into Kennedy, as well as areas of the Cape south of Strathgordon Rd and then south of the Peninsula Developmental Rd and the Mulligan Hwy.

These changes should then be complemented by the approach suggested by the ALP submission, reuniting all of Bentley Park, Gordonvale-Trinity and Edmonton SA2s from Leichhardt with the remainder of these suburbs in Kennedy. Furthermore, for the sake of better achieving the principle of "one vote, one value", it is suggested that a small part of White Rock also be transferred from Leichhardt to Kennedy.

Kennedy

Changes:

- The part of Wulguru-Roseneath in Kennedy be moved into Dawson (3149113-4)
- The part of Douglas SA2 in Kennedy be moved into Dawson (3147417)
- Part of Townsville-South SA2 be moved from Kennedy into Dawson (3148901, 3148904, 3148909-10 and 3148913)
- The remainder of Edmonton, Gordonvale-Trinity and Bentley Park SA2s be reunited in Kennedy from Leichhardt
- Part of White Rock be moved from Leichhardt into Kennedy (3115508-9)
- The remainder of Tablelands and Carpentaria SA2s be reunited in Kennedy from Leichhardt
- Part of Kowanyama-Pormpuraaw SA2 be moved into Kennedy from Leichhardt (3139801-4)
- Part of Cape York SA2 be moved into Kennedy from Leichhardt (the parts of 3139602, 3139606 and 3139609 that are south of Strathgordon Rd and then south of the Peninsula Developmental Rd and the Mulligan Hwy)

Electors transferred out: 933

Electors transferred in: 6,579 (estimate only because several SA1s are split)

Leichhardt

Changes:

- The remainder of Edmonton, Gordonvale-Trinity and Bentley Park SA2s be reunited in Kennedy
- Part of White Rock be moved into Kennedy (3115508-9)
- The remainder of Tablelands and Carpentaria SA2s be reunited in Kennedy
- Part of Kowanyama-Pormpuraaw SA2 be moved into Kennedy (3139801-4)
- Part of Cape York SA2 be moved into Kennedy (the parts of 3139602, 3139606 and 3139609 that are south of Strathgordon Rd and then south of the Peninsula Developmental Rd and the Mulligan Hwy)

Electors transferred out: 6,579 (estimate only because several SA1s are split)

Electors transferred in: 0