



**THE FEDERAL  
REDISTRIBUTION  
NORTHERN TERRITORY**

# Public suggestion 2

**Jeff Waddell**

11 pages

Submission

---

into the proposed redistribution of

---

Commonwealth Electoral Divisions

---

in the Northern Territory

---

Author: Jeff Waddell

Email:

Disclaimer: Whilst every effort has been made to ensure the accuracy of the data provided in this submission, there may be unintended instances of calculation or raw data errors. As the author, I make no attempt to deliberately mislead the reader, nor for the reader to draw incorrect conclusions should any error of calculation be found in this submission. I have performed all calculations in good faith, assuming my work to be 100% correct.

# Without fear or favour

This submission contains my proposal to redraw the electoral boundaries of the 2 Commonwealth Electoral Divisions of the Northern Territory; currently known as Lingiari and Solomon.

## Acronyms & abbreviations

ABS - Australian Bureau of Statistics

AEC - Australian Electoral Commission

ASGS - Australian Statistical Geography Standard

CED – Commonwealth Electoral Division

LGA - Local Government Area (City Council, Shire, etc.)

SA (SA1, SA2, SA3 & SA4) - Statistical Areas as used by the ABS. SA1 being the smallest and SA4 being the largest state-based Statistical Area.

## Data Sources & References

To assist in the preparation of this document, I referenced information from the following web sites:

The AEC: <http://www.aec.gov.au/>

ASGS Boundaries Online:

<http://betaworks.abs.gov.au/betaworks/betaworks.nsf/projects/ASGSBoundariesOnline/frame.htm>

Monthly Divisional Enrolment Statistics from the Gazettes published on the Australian Government ComLaw website: <https://www.comlaw.gov.au/Browse/ByPublicationDate/Gazettes/Current/1/>

Google Maps and Google Earth: <https://www.google.com.au/maps>

Northern Territory Electoral Commission: Territory Electoral boundaries -

<http://www.ntec.nt.gov.au/ElectoratesAndBoundaries/ElectorateMaps/Pages/default.aspx>

## Current Divisional Names

I do not believe there is any reason for either Divisional Name to be changed.

## Assess Divisional Enrolment Details with new data.

With the publication of current and projected enrolment data it was time to assess where each of the existing divisions was in relation to the new quotas.

But first, the Maximum and Minimum enrolment tolerances needed to be defined in this document:

### Current enrolment tolerances

|                                    |         |
|------------------------------------|---------|
| Current Enrolment 15/10/15         | 129,571 |
| Divided by number of new Divisions | 2       |

|                                    |          |
|------------------------------------|----------|
| Average enrolment per new Division | 64,785.5 |
|------------------------------------|----------|

|                        |           |
|------------------------|-----------|
| Maximum tolerance +10% | 71,264.05 |
| Rounded                | 71,264    |

|                        |           |
|------------------------|-----------|
| Minimum tolerance -10% | 58,306.95 |
| Rounded                | 58,307    |

### Projected enrolment tolerances

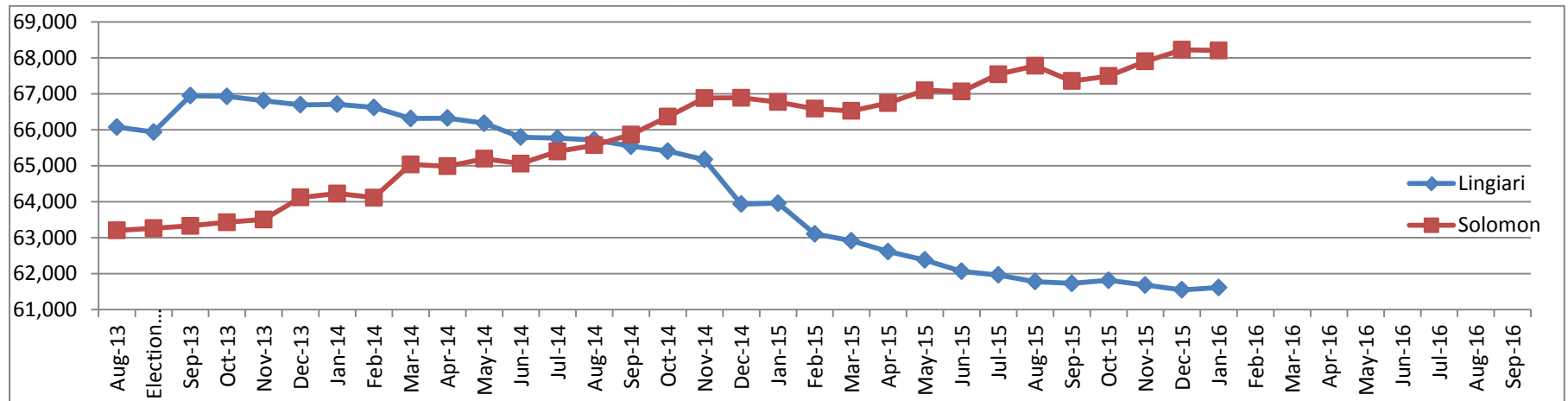
|                                    |         |
|------------------------------------|---------|
| Projected Enrolment 7/8/2020       | 141,376 |
| Divided by number of new Divisions | 2       |

|                                    |        |
|------------------------------------|--------|
| Average enrolment per new Division | 70,688 |
|------------------------------------|--------|

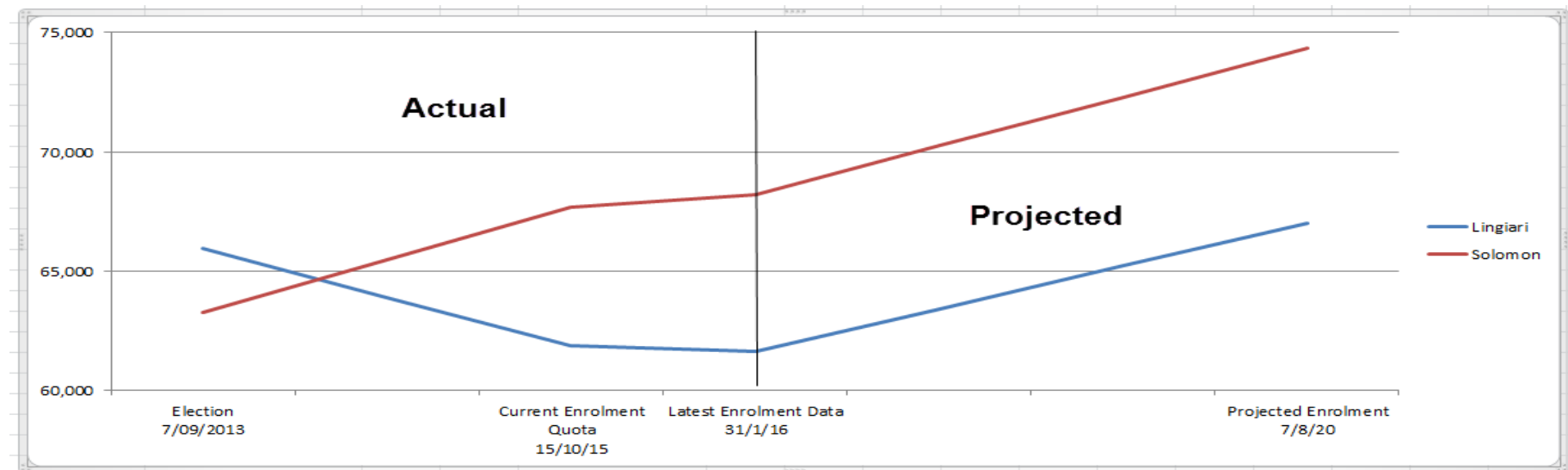
|                                     |           |
|-------------------------------------|-----------|
| Maximum recommended tolerance +3.5% | 73,162.08 |
| Rounded                             | 73,162    |

|                                     |           |
|-------------------------------------|-----------|
| Minimum recommended tolerance -3.5% | 68,213.92 |
| Rounded                             | 68,214    |

**Enrolment by Division: Monthly enrolment data published by the AEC since 2013 Election**



**Enrolment by Division: Historical and Projected data by current Division**



### **Analysis of enrolment data**

As can be seen by the first graph on the previous page, there has been a dramatic change of enrolment numbers – especially in Lingiari – since the 2013 Federal Election.

Whilst the decline in Lingiari's enrolment has subsided, there is, as yet, no evidence of any upward trend in enrolment for this Division.

To that extent I am concerned that the projected enrolment data; published for this Redistribution; relating to the existing Division of Lingiari, as shown in the second graph above, may be somewhat ambitious.

### **Determining the new boundaries.**

The focus of this Redistribution is the transfer of sufficient electors from Solomon to Lingiari to ensure both Divisions are within projected tolerance by 7/8/20.

Ultimately, Lingiari had to gain somewhere between 1190 & 6138 projected electors to achieve this. Preferably it needed to gain between 3664 & 6138 electors as its projected growth over the next 4.5 years was less than that of the more urban Solomon.

The lack of key data in the current Divisional maps (no LGA boundaries defined) made it difficult to make totally informed decisions on where to propose the new boundary between the Divisions.

I had to rely on the LGA boundaries as defined in the ASGS Boundaries Online web page. So this proposal, at least in part, assumes those boundaries are still current.

My starting point was to pare Solomon back to just the LGA's of Darwin and Palmerston, with the Stuart Highway forming the northern boundary between the two. However, this did not transfer sufficient electors to Lingiari.

Whilst I didn't consider splitting the rapidly urbanising Palmerston LGA between Divisions as the most desirable outcome, I felt there was little choice in order to get both Divisions within +/-3.5% tolerance by the projected enrolment date of 7/8/2020.

Solomon's base was Darwin and that had to remain; not just the City itself, but the entire LGA. Alongside the City of Darwin was the unincorporated area around Berrimah, Wishart and the more industrial East Arm. So that left only Palmerston LGA to divide up between Lingiari and Solomon.

My preference was to place the northern and eastern parts of Palmerston LGA in Lingiari, so I then set about determining exactly how I would split the LGA to accommodate this.

My proposed Solomon – Lingiari boundary now runs (from north to south) along the Darwin – Litchfield LGA boundary from the sea down to the Stuart Hwy. The following the Stuart Hwy SE and continuing SE into Roystonea Ave; SW into Temple Tce, Palmerston; SE into Chung Wah Tce; ENE into Buscall Ace; S into Roystonea Ave; E along Lambrick Ave; S along Mitchells Creek to the Elizabeth River. Images of this proposed boundary follow on the pages below.

## Images of proposed Divisional boundary

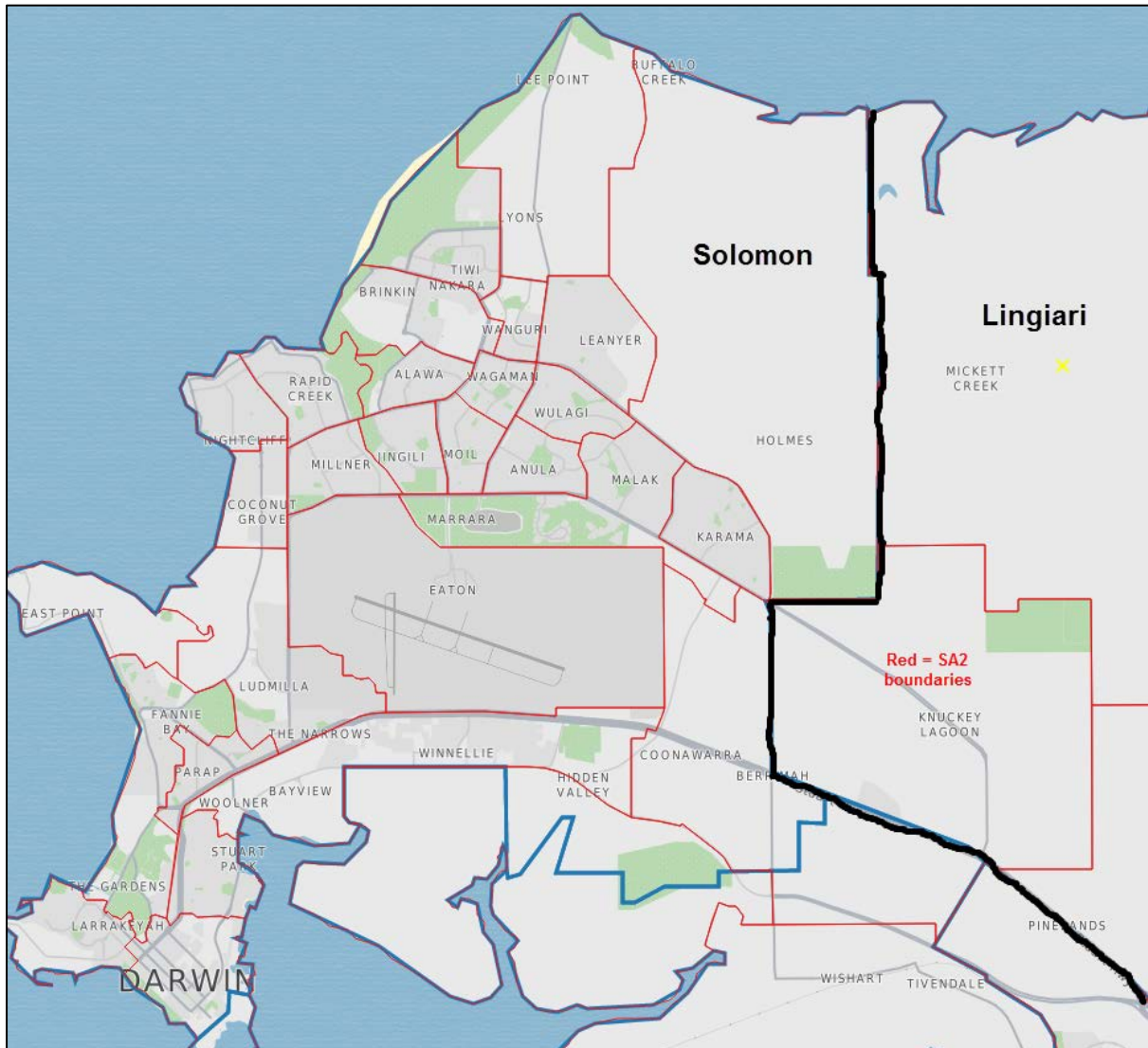
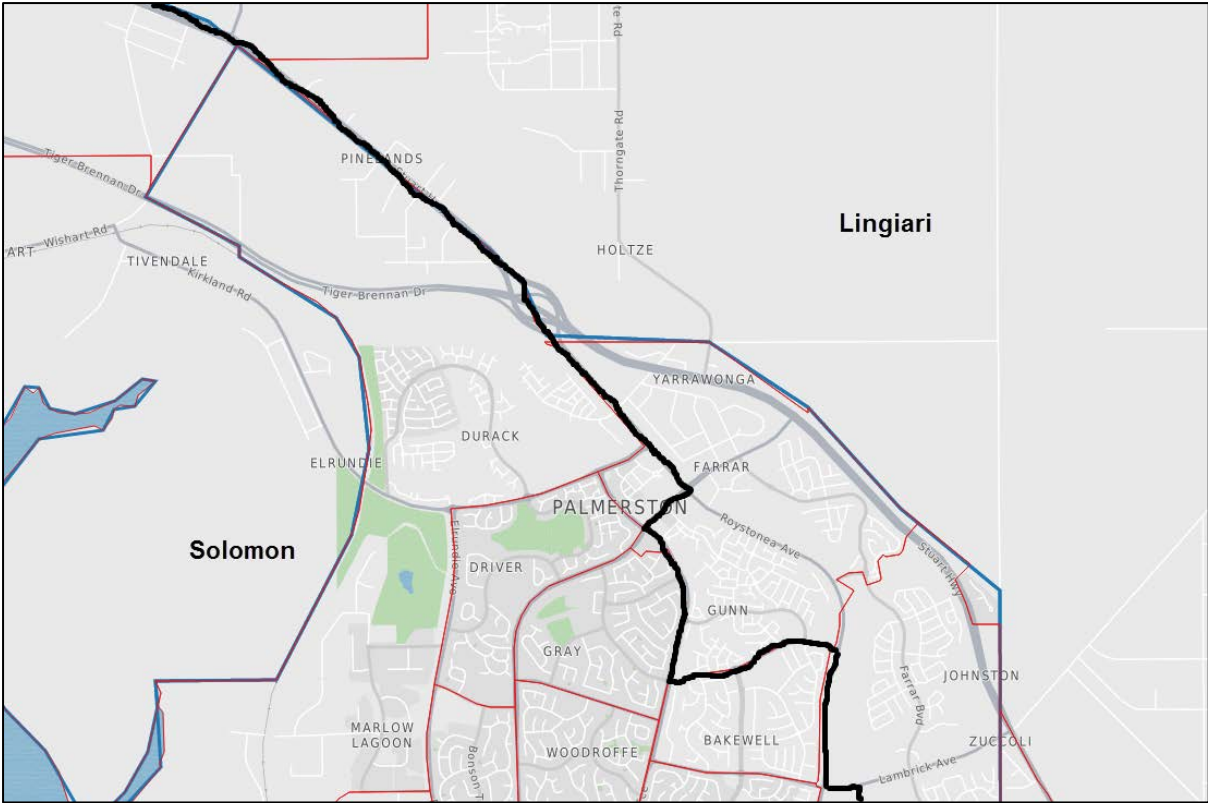


Image 1 – Northern part of proposed Solomon – Lingiari CED boundary following Darwin and Litchfield LGA boundaries.

(ASGS Boundaries Online)





**Image 2 – South-Eastern part of proposed Solomon – Lingiari CED boundary within Palmerston LGA.**

**(ASGS Boundaries Online)**



Image 3 – Southern part of proposed Solomon – Lingiari CED boundary within Palmerston LGA.

(Google Maps)

## Table of Transfers

| Old Division                                | New Division | SA2 Name           | SA1 Code | Actual<br>Enrolment<br>15/10/2015 | Projected<br>Enrolment<br>07/08/2020 | Growth<br>(%) |
|---|--------------|--------------------|----------|-----------------------------------|--------------------------------------|---------------|
| Solomon                                     | Lingiari     | Berrimah           | 7101203  | 159                               | 152                                  | -4.40%        |
| Solomon                                     | Lingiari     | Berrimah           | 7101205  | 136                               | 131                                  | -3.68%        |
| Solomon                                     | Lingiari     | Howard_Springs     | 7103102  | 45                                | 51                                   | 13.33%        |
| Solomon                                     | Lingiari     | Howard_Springs     | 7103103  | 22                                | 23                                   | 4.55%         |
| Solomon                                     | Lingiari     | Howard_Springs     | 7103107  | 578                               | 598                                  | 3.46%         |
| Solomon                                     | Lingiari     | Koolpinyah         | 7103301  | 4                                 | 4                                    | 0.00%         |
| Solomon                                     | Lingiari     | Palmerston_-_North | 7104101  | 202                               | 244                                  | 20.79%        |
| Solomon                                     | Lingiari     | Palmerston_-_North | 7104102  | 347                               | 414                                  | 19.31%        |
| Solomon                                     | Lingiari     | Palmerston_-_North | 7104103  | 868                               | 952                                  | 9.68%         |
| Solomon                                     | Lingiari     | Palmerston_-_North | 7104104  | 40                                | 43                                   | 7.50%         |
| Solomon                                     | Lingiari     | Palmerston_-_North | 7104105  | 230                               | 250                                  | 8.70%         |
| Solomon                                     | Lingiari     | Palmerston_-_North | 7104106  | 289                               | 342                                  | 18.34%        |
| Solomon                                     | Lingiari     | Palmerston_-_North | 7104107  | 155                               | 167                                  | 7.74%         |
| Solomon                                     | Lingiari     | Palmerston_-_North | 7104108  | 296                               | 341                                  | 15.20%        |
| Solomon                                     | Lingiari     | Palmerston_-_North | 7104109  | 112                               | 123                                  | 9.82%         |
| Solomon                                     | Lingiari     | Palmerston_-_North | 7104110  | 5                                 | 7                                    | 40.00%        |
| Solomon                                     | Lingiari     | Palmerston_-_South | 7104201  | 832                               | 940                                  | 12.98%        |
| Yellow BG = only portion of SA1 transferred |              |                    |          | <b>4,320</b>                      | <b>4,782</b>                         | <b>10.69%</b> |

**Note:** My proposed boundaries split the 2 SA1's at the bottom of the above table; so the true number of current and projected electors transferred may be slightly less than the whole SA1 values provided here.

| Division              | Current | Projected |
|-----------------------|---------|-----------|
| Lingiari              | 61,872  | 67,024    |
| Transfer from Solomon | 4,320   | 4,782     |
| New Division          | 66,192  | 71,806    |
| Variation             | 2.17%   | 1.58%     |

| Division             | Current | Projected |
|----------------------|---------|-----------|
| Solomon              | 67,699  | 74,352    |
| Transfer to Lingiari | -4,320  | -4,782    |
| New Division         | 63,379  | 69,570    |
| Variation            | -2.17%  | -1.58%    |

## Closing analysis

I believe this proposal meets all the criteria set by the AEC.

Both proposed Divisions have a projected enrolment quota within +/-3.5% of the average enrolment figure as at 7/8/2020.

Community of interests have been retained as much as numeric tolerances will allow.

Means of communication and travel was a factor in determining which part of Palmerston LGA I transferred to Lingiari.

Physical features and area: To the extent possible, the less densely populated eastern parts of the current Division of Solomon were transferred to Lingiari.