

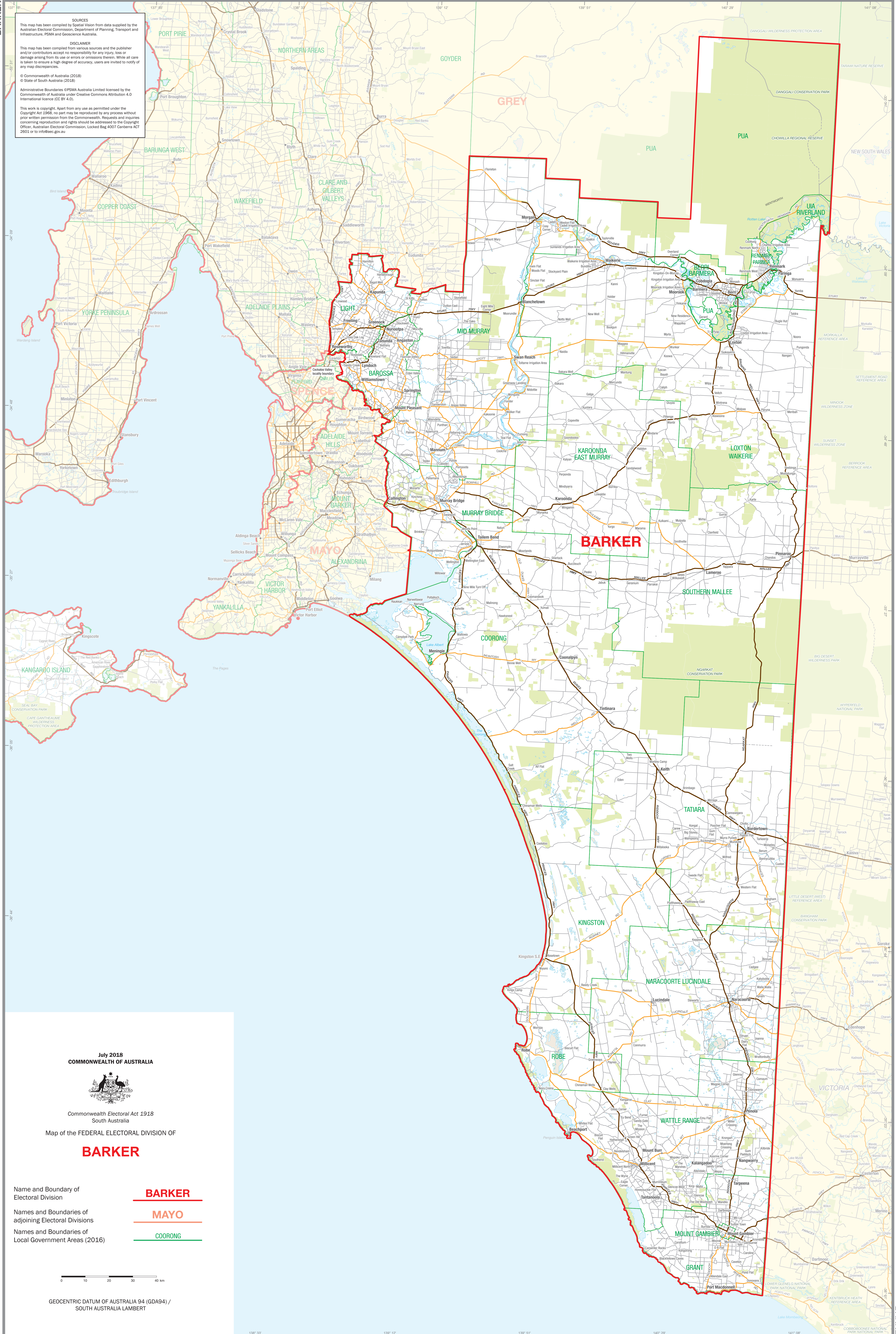
SOURCES
 This map has been compiled by Spatial Vision from data supplied by the Australian Electoral Commission, Department of Planning, Transport and Infrastructure, PSMA and Geoscience Australia.

DISCLAIMER
 This map has been compiled from various sources and the publisher and/or contributors accept no responsibility for any injury, loss or damage arising from its use or errors or omissions therein. While all care is taken to ensure a high degree of accuracy, users are invited to notify of any map discrepancies.

© Commonwealth of Australia (2018)
 © State of South Australia (2018)

Administrative Boundaries ©PSMA Australia Limited licensed by the Commonwealth of Australia under Creative Commons Attribution 4.0 International licence (CC BY 4.0).

This work is copyright. Apart from any use as permitted under the Copyright Act 1968, no part may be reproduced by any process without prior written permission from the Commonwealth. Requests and inquiries concerning reproduction and rights should be addressed to the Copyright Officer, Australian Electoral Commission, Locked Bag 4007 Canberra ACT 2601 or to info@aec.gov.au



July 2018
 COMMONWEALTH OF AUSTRALIA



Commonwealth Electoral Act 1918
 South Australia

Map of the FEDERAL ELECTORAL DIVISION OF

BARKER

Name and Boundary of
 Electoral Division

BARKER

Names and Boundaries of
 adjoining Electoral Divisions

MAYO

Names and Boundaries of
 Local Government Areas (2016)

COORONG

0 10 20 30 40 km

GEOCENTRIC DATUM OF AUSTRALIA 94 (GDA94) /
 SOUTH AUSTRALIA LAMBERT

BARKER

BARKER