


**SOURCES**  
 This map has been compiled by Spatial Vision from data supplied by the Australian Electoral Commission, Data.gov.au and Geoscience Australia.

**DISCLAIMER**  
 This map has been compiled from various sources and the publisher and/or contributors accept no responsibility for any injury, loss or damage arising from its use or errors or omissions therein. While all care is taken to ensure a high degree of accuracy, users are invited to notify of any map discrepancies.

© Commonwealth of Australia (2015)

This work is copyright. Apart from any use as permitted under the Copyright Act 1968, no part may be reproduced by any process without prior written permission from the Commonwealth. Requests and inquiries concerning reproduction and rights should be addressed to the Copyright Officer, Education and Communications Branch, Australian Electoral Commission, 50 Marcus Clarke Street Canberra ACT 2600 or to info@aec.gov.au

**August 2015  
 COMMONWEALTH OF AUSTRALIA**



**Commonwealth Electoral Act 1918**

**PROPOSED BOUNDARIES AND NAMES OF FEDERAL ELECTORAL DIVISIONS IN WESTERN AUSTRALIA**

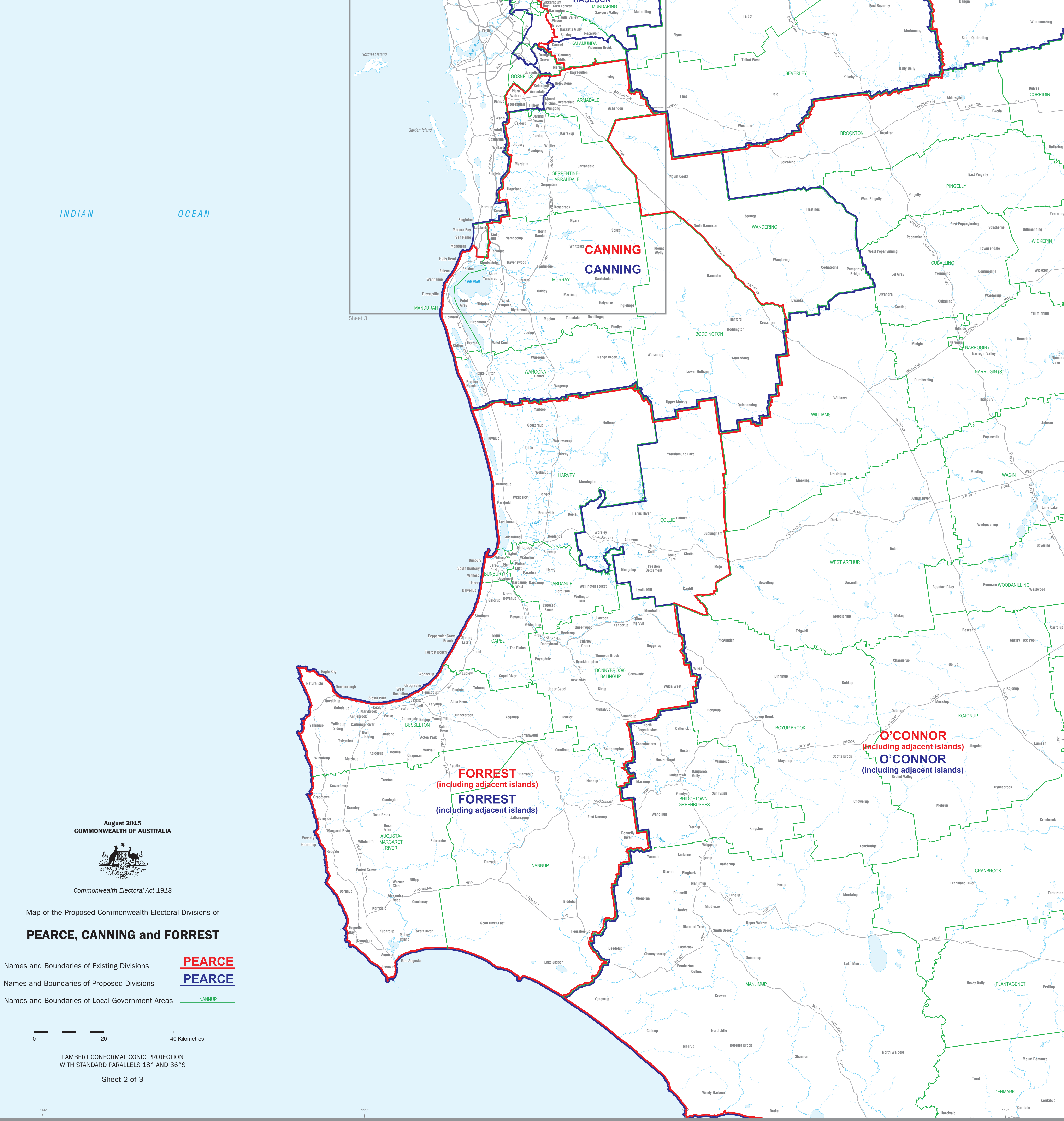
The Redistribution Committee for Western Australia has made its proposed redistribution of the federal electoral boundaries for Western Australia. This map is one of a series of three that shows the boundaries and names of the proposed electoral divisions.

Interested persons or organisations may lodge written objections against the proposed redistribution with the Electoral Commission. Objections must be received by the Electoral Commission before 6 pm (AWST) on Friday 18 September 2015.


Objections may be lodged via the AEC website at [www.aec.gov.au/wa-redistribution](http://www.aec.gov.au/wa-redistribution). Objections addressed to the Electoral Commission can also be submitted:

- by email to: [FedRedistribution-WA@aec.gov.au](mailto:FedRedistribution-WA@aec.gov.au)
- in person during business hours to:  
 The Electoral Commission  
 Level 13, 200 St Georges Terrace, Perth WA, 6000
- by mail to:  
 The Electoral Commission  
 PO Box 7081, Cloisters Square PO, WA 6850
- by fax to:  
 08 6363 8016

Persons or organisations making objections to the proposed redistribution are urged to take account of the requirements of sections 69 and 73 of the Commonwealth Electoral Act 1918.



**August 2015  
 COMMONWEALTH OF AUSTRALIA**



**Commonwealth Electoral Act 1918**

**Map of the Proposed Commonwealth Electoral Divisions of  
 PEARCE, CANNING and FORREST**

Names and Boundaries of Existing Divisions **PEARCE**

Names and Boundaries of Proposed Divisions **PEARCE**

Names and Boundaries of Local Government Areas **NANNUP**

0 20 40 Kilometres

LAMBERT CONFORMAL CONIC PROJECTION  
 WITH STANDARD PARALLELS 18° AND 36°S

Sheet 2 of 3