

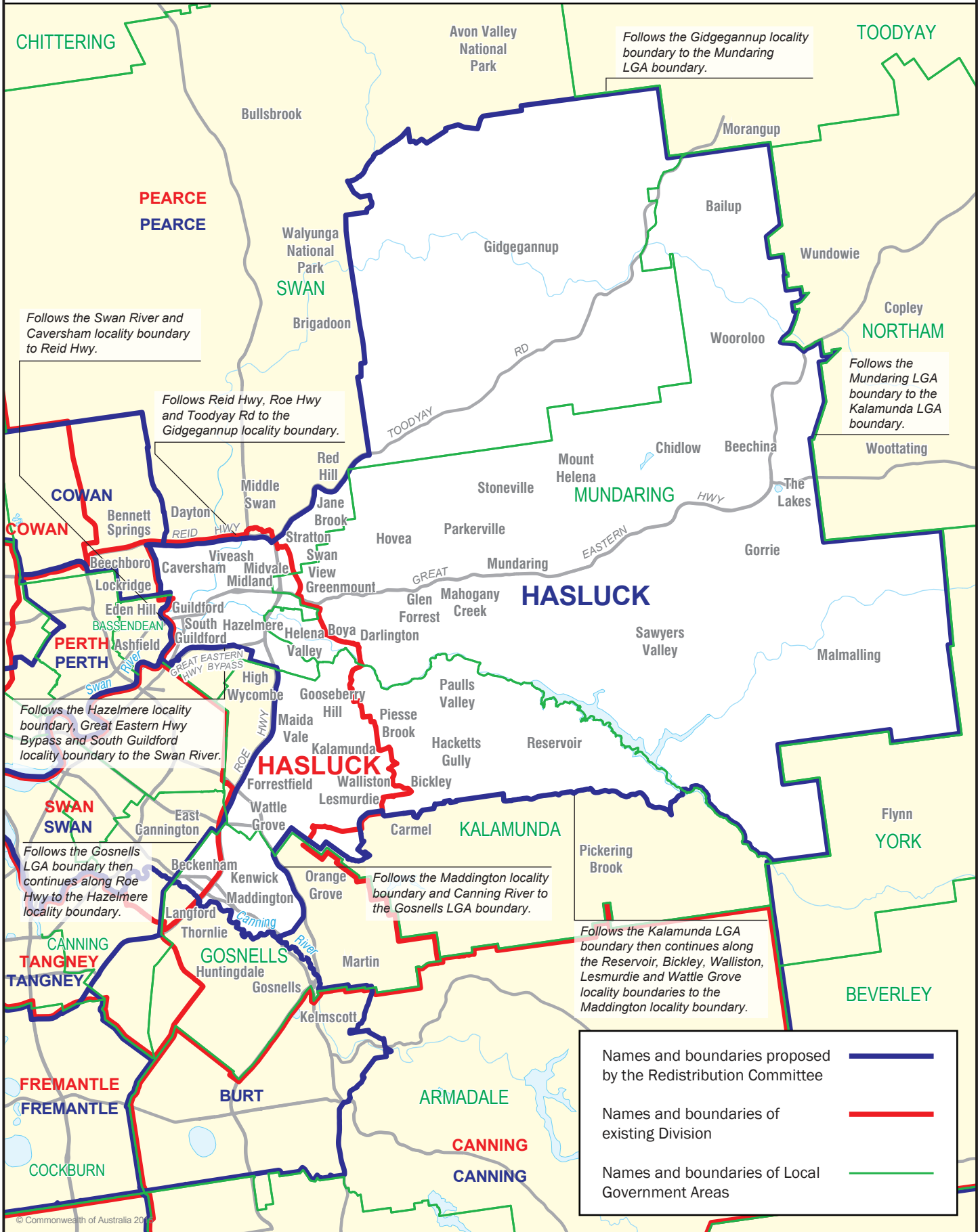


August 2015 MAP OF PROPOSED FEDERAL ELECTORAL DIVISION OF HASLUCK



0 5 km

HASLUCK



CHITTERING

Avon Valley National Park

Follows the Gidgegannup locality boundary to the Mundaring LGA boundary.

TOODYAY

PEARCE
PEARCE

Follows the Swan River and Caversham locality boundary to Reid Hwy.

Walyunga National Park
SWAN

Follows Reid Hwy, Roe Hwy and Toodyay Rd to the Gidgegannup locality boundary.

COWAN

MUNDARING

NORTHAM

Follows the Mundaring LGA boundary to the Kalamunda LGA boundary.

PERTH
PERTH

HASLUCK

Follows the Hazelmere locality boundary, Great Eastern Hwy Bypass and South Guildford locality boundary to the Swan River.

HASLUCK

SWAN
SWAN

KALAMUNDA

Follows the Gosnells LGA boundary then continues along Roe Hwy to the Hazelmere locality boundary.

Follows the Maddington locality boundary and Canning River to the Gosnells LGA boundary.

Follows the Kalamunda LGA boundary then continues along the Reservoir, Bickley, Walliston, Lesmurdie and Wattle Grove locality boundaries to the Maddington locality boundary.

CANNING
TANGNEY

GOSNELLS

BEVERLEY

FREMANTLE
FREMANTLE

BURT

ARMADALE

CANNING
CANNING

COCKBURN

Names and boundaries proposed by the Redistribution Committee	
Names and boundaries of existing Division	
Names and boundaries of Local Government Areas	