

SOURCES
This map has been compiled by Spatial Vision from data supplied by the Australian Electoral Commission, the Australian Bureau of Statistics, Geoscience Australia and the South Australian Government. The source of data, other than Current and Proposed Division Boundaries, is data from the Department of Environment and Natural Resources, Australian Bureau of Statistics and Geoscience Australia.

DISCLAIMER
This map has been compiled from various sources and the publisher and/or contributors accept no responsibility for any injury, loss or damage arising from its use or errors or omissions therein. While all care is taken to ensure a high degree of accuracy users are invited to notify of any map discrepancies.

© State of South Australia (2011)
© Commonwealth of Australia (2011)

This work is copyright. Apart from any use as permitted under the Copyright Act 1968, no part may be reproduced by any process without prior written permission from the Commonwealth. Requests and inquiries concerning reproduction and rights should be addressed to the Commonwealth Copyright Administration, Attorney General's Department, National Circuit, Barton ACT 2600 or posted at <http://www.ag.gov.au/cca>.



BARKER, GREY, MAYO AND WAKEFIELD

Names and Boundaries of Existing Divisions

Names and Boundaries of Proposed Divisions

Names and Boundaries of Local Government Areas

MAYO
MAYO
BAROSSA



Map 1 Scale 1:3,800,000
GEOGRAPHIC COORDINATE PROJECTION GDA94 DATUM
Sheet 1 of 2



PROPOSED BOUNDARIES AND NAMES FOR FEDERAL ELECTORAL DIVISIONS IN SOUTH AUSTRALIA

The Redistribution Committee for South Australia has made its proposed redistribution of the federal electoral boundaries for South Australia. This map is one of a series of two that shows the boundaries and names of the proposed electoral divisions.

Interested persons or organisations may lodge written objections against the proposed redistribution with the Australian Electoral Commission. Objections must be received by the Australian Electoral Commission before 6 p.m. on Friday 9 September 2011.

Objections should be addressed to the Australian Electoral Commission (Attention Redistribution Secretariat) and delivered to:

By Hand: 9th floor, Origin Energy House, 1 King William Street, Adelaide SA 5000
By Post: GPO Box 344, Adelaide SA 5001
By Email: saredistribution@aec.gov.au

Persons or organisations making objections to the proposed redistribution are urged to take account of the requirements of sections 69 and 73 of the Commonwealth Electoral Act 1918.

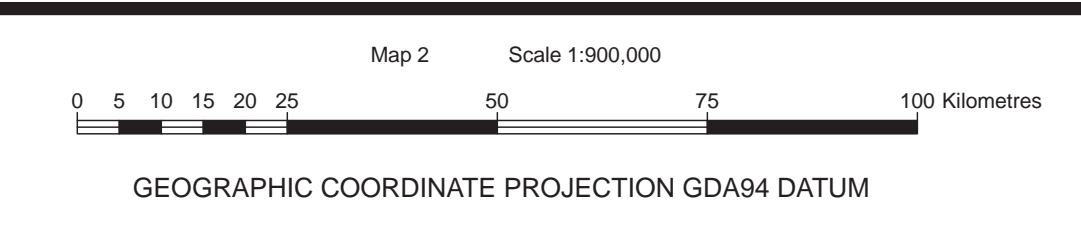
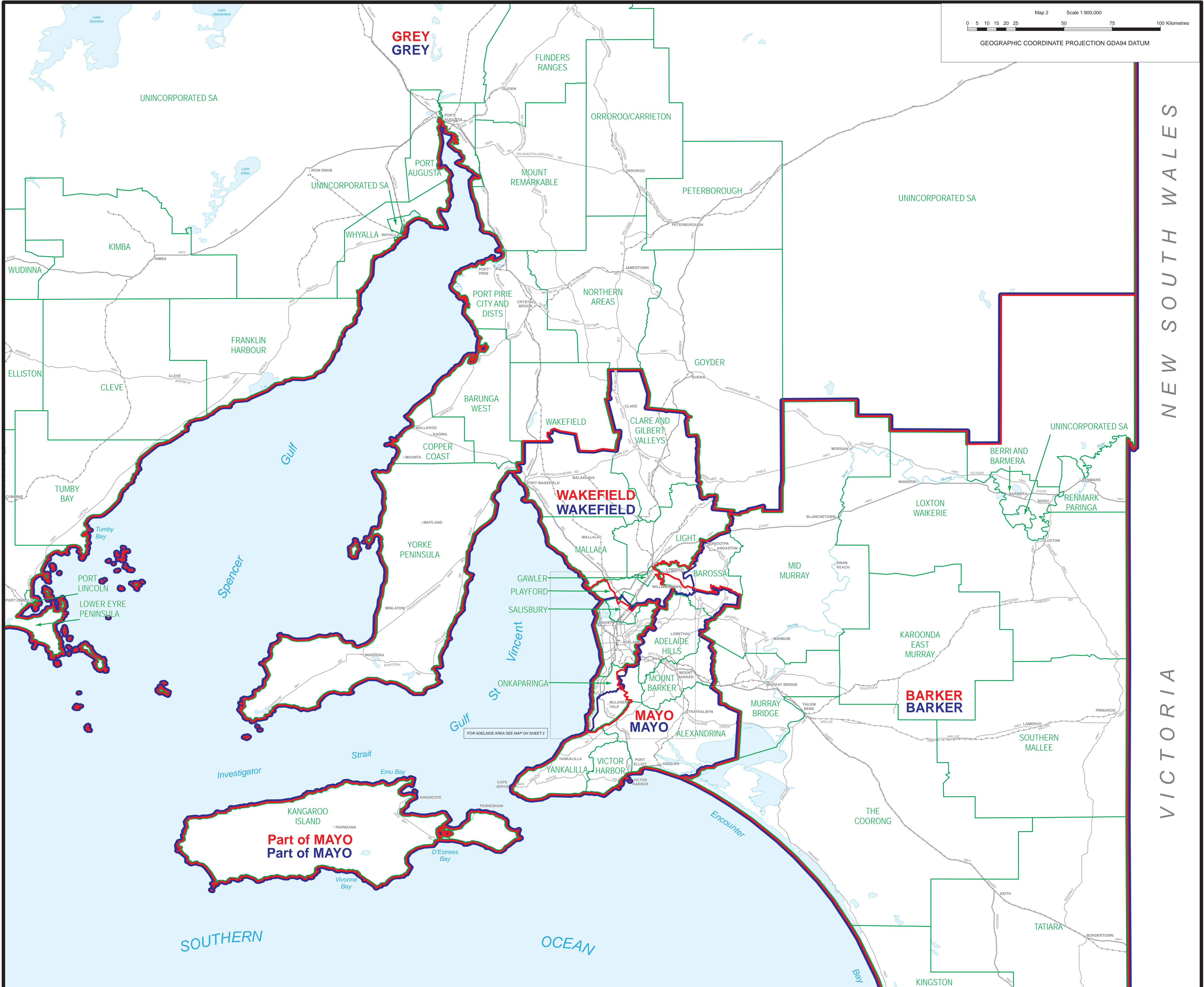
Ed Killesteyn
Ed Killesteyn
Electoral Commissioner

Clare Wilton
Clare Wilton
Australian Electoral Officer
for South Australia

Peter Kerish
Peter Kerish
Surveyor-General for South Australia

Simon O'Neill
Simon O'Neill
Auditor-General of South Australia

Redistribution Committee for South Australia



Map 2 Scale 1:900,000
GEOGRAPHIC COORDINATE PROJECTION GDA94 DATUM