

March 2018  
COMMONWEALTH OF AUSTRALIA



Commonwealth Electoral Act 1918

Map of the Federal electoral divisions of

# BLAIR, GROOM, HINKLER, WIDE BAY and WRIGHT

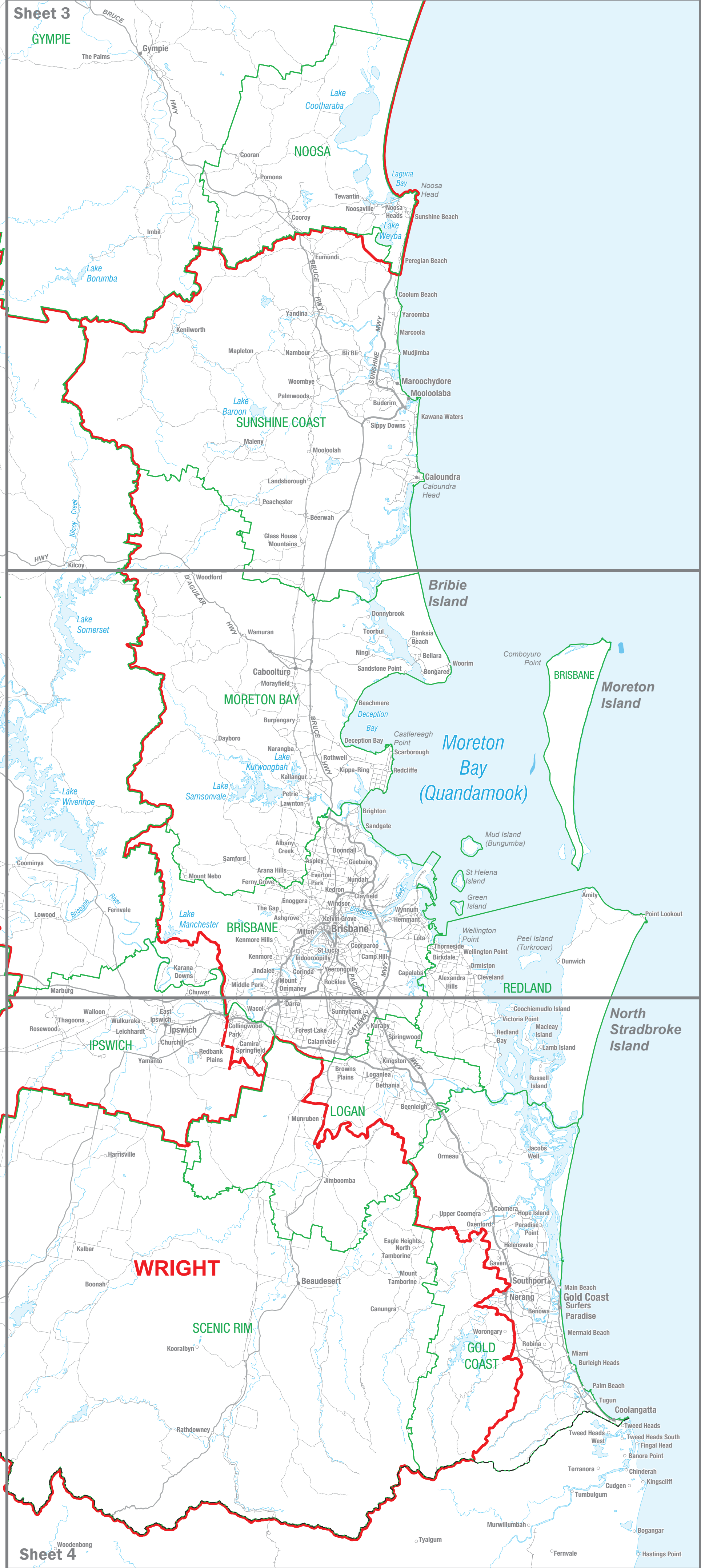
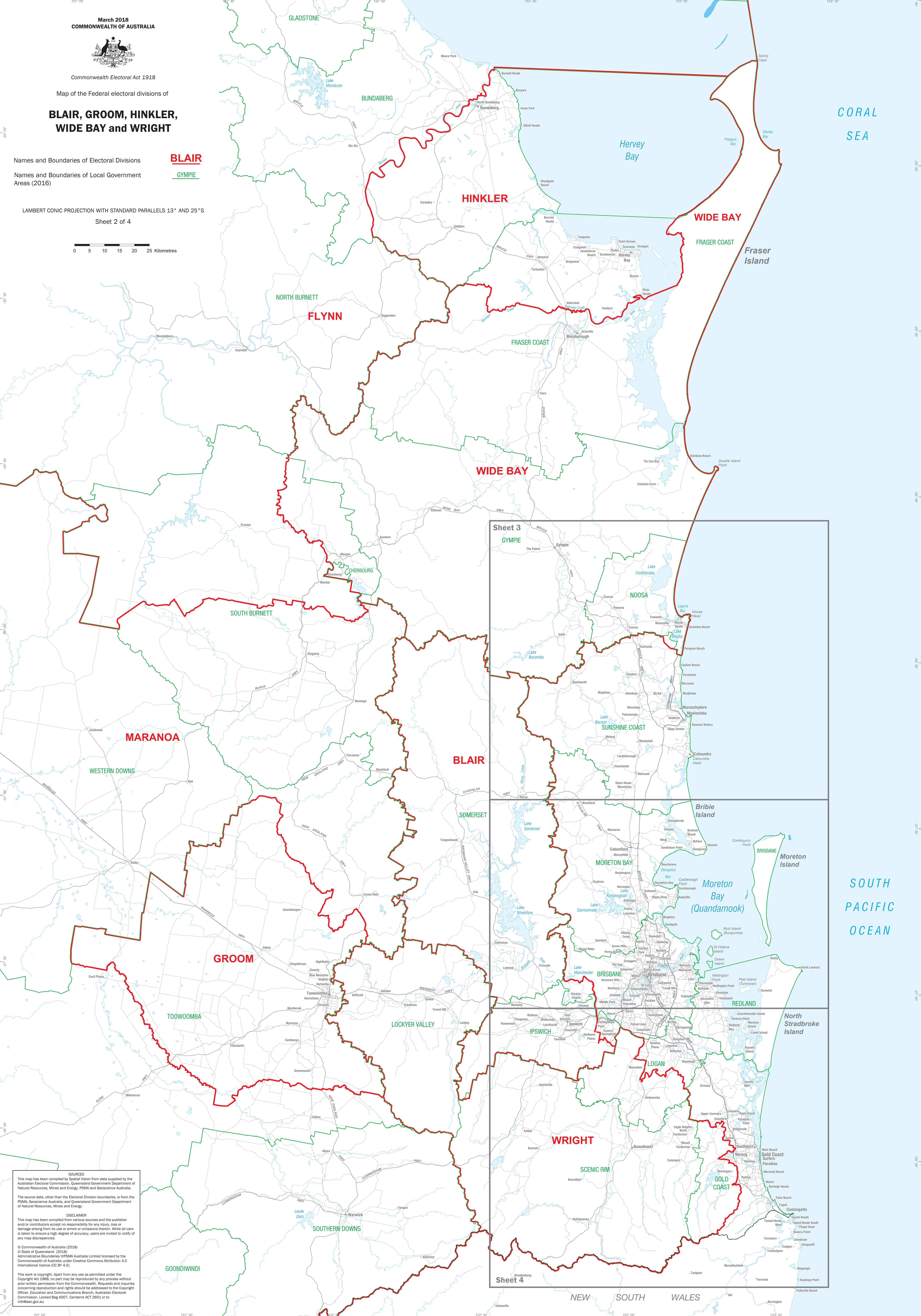
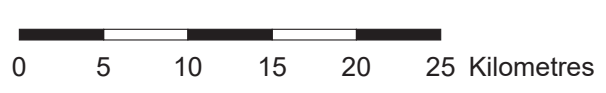
Names and Boundaries of Electoral Divisions

Names and Boundaries of Local Government  
Areas (2016)

**BLAIR**  
**GYMPIE**

LAMBERT CONIC PROJECTION WITH STANDARD PARALLELS 13° AND 25°S

Sheet 2 of 4



**SOURCES**  
This map has been compiled by Spatial Vision from data supplied by the Australian Electoral Commission, Queensland Government Department of Natural Resources, Mines and Energy, PSMA and Geoscience Australia.

The source data, other than the Electoral Division boundaries, is from the PSMA, Geoscience Australia, and Queensland Government Department of Natural Resources, Mines and Energy.

**DISCLAIMER**  
This map has been compiled from various sources and the publisher and/or contributors accept no responsibility for any injury, loss or damage arising from its use or errors or omissions therein. While all care is taken to ensure a high degree of accuracy, users are invited to notify of any map discrepancies.

© Commonwealth of Australia (2018)  
© State of Queensland (2018)  
Administrative Boundaries: GPO/MA Australia Limited licensed by the Commonwealth of Australia under Creative Commons Attribution 4.0 International licence (CC BY 4.0).

This work is copyright. Apart from any use as permitted under the Copyright Act 1968, no part may be reproduced by any process without prior written permission from the Commonwealth. Requests and inquiries concerning reproduction and rights should be addressed to the Copyright Officer, Education and Communications Branch, Australian Electoral Commission, Locked Bag 4007, Canberra ACT 2601 or to [info@aec.gov.au](mailto:info@aec.gov.au)