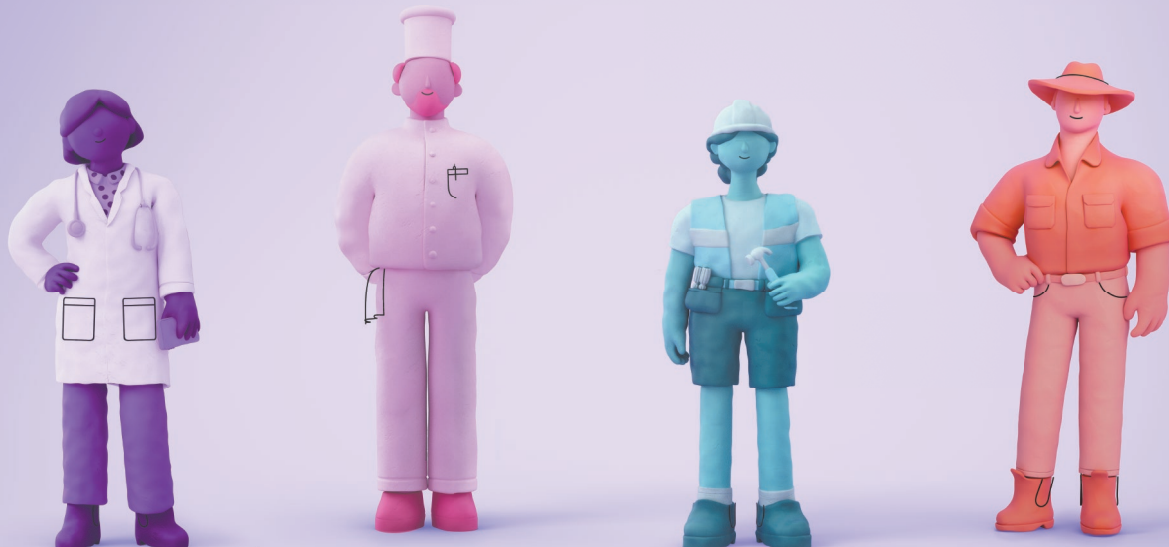


Can't make it on Election Day?



If you can't vote on Saturday, 21 May, you may be eligible to vote early.

All Australian citizens aged 18 years and over are required by law to vote.

So, if you can't make it to a polling place on election day, you may be eligible to:

- **vote early at an early voting centre, or**
- **apply for a postal vote.**

If you're travelling, working or will be outside the electorate where you're enrolled on election day, you can vote early.

A range of COVID-19 safety measures will be in place this election.

BE COVIDSAFE

To check early voting options and eligibility, visit aec.gov.au/early

Your vote will help shape Australia.

To learn more

aec.gov.au 13 23 26

