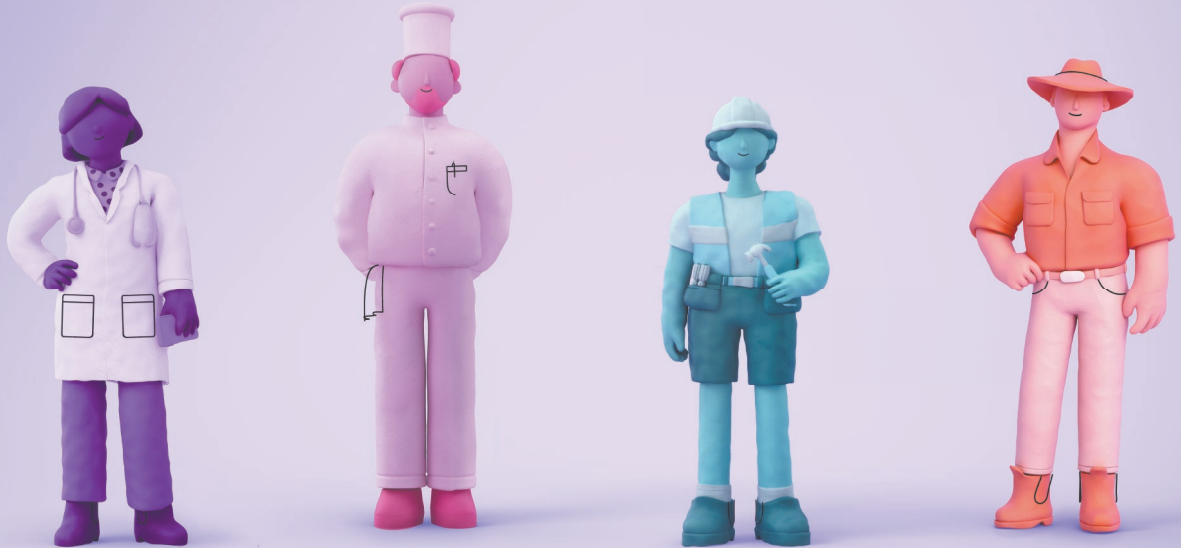


# Can't make it on Election Day?



## If you can't vote on Saturday 3 May, you may be eligible to vote early.

All Australian citizens aged 18 years and over are required by law to vote.

So, if you can't make it to a polling place on election day, you may be eligible to:

- **vote early at an early voting centre, or**
- **apply for a postal vote.**

If you're travelling, working or will be outside the electorate where you're enrolled on election day, you can vote early.

To check early voting options and eligibility, visit **[aec.gov.au/early](https://aec.gov.au/early)**

**Your vote will help shape Australia.**



To learn more  
**[aec.gov.au/early](https://aec.gov.au/early)**  
13 23 26

