



Suggestion 31

David Liam Walsh

54 pages

11 October 2020

Dear Members of the Redistribution Committee for Victoria,

I'm pleased to submit my suggestion for the redrawing of Victoria's federal electoral boundaries.

I hope you will find this useful in your deliberations.

Yours Faithfully,

David Walsh

Outline

Victoria's federal seat entitlement has increased from 38 to 39. The first challenge is to work out where to place the new seat. To take a high level look I have split the state up into three regions:

- **Northern and Western Victoria** (presently 8 seats) - the large rural seats in the state's north and west and those based around the regional cities of Geelong, Ballarat & Bendigo.
- **Northern and Western Melbourne** (presently 12 seats) - the Melbourne suburban seats lying north and west of the Yarra River, including the semi-rural seat of McEwen.
- **Eastern Melbourne and Eastern Victoria** (presently 18 seats) - the Melbourne suburban seats lying wholly or mostly east and south of the Yarra River as well as the rural seats south of the Great Dividing Range.

Description	Enrolment		Projected enrolment	
N & W Victoria (8)	913,867	8.38	967,312	8.26
N & W Melbourne (12)	1,339,681	12.29	1,473,171	12.58
E Melb & E Vic (18)	1,998,258	18.33	2,126,708	18.16

These figures show that whilst the current enrolment surplus is spread evenly between the three regions, the projections place more than half of it in the 12 seats of northern and western Melbourne. This then is the obvious place for the new seat. Additionally, since this region is sandwiched between the other two, its collective footprint can expand to absorb their (smaller) surpluses.

I suggest creating the new division by roughly splitting McEwen in two. McEwen is obvious place for revision as it currently straddles different regions and disconnected outer suburban areas. The eastern half would retain the name McEwen; the western half I name Hawke, in honour of the late prime minister Bob Hawke.

The footprint of eastern Melbourne contracts by ceding most of its area north of the Yarra River. The footprint of northern and western Victoria contracts by a small transfer in the Macedon Ranges, and a larger one around Bacchus Marsh.

All roads lead to Melbourne

If there is a contentious aspect to my submission, I suspect it is this: I suggest three divisions straddling the (admittedly hazy) metro/rural boundary in outer northern and western Melbourne - namely Gorton, Hawke, and McEwen - where currently only McEwen does so.

Anticipating such an objection, I argue that communities of interest don't end at the metropolitan boundary. All three suggested divisions extend along major transport links such as the Western Highway, Calder Highway, and Hume Highway. I believe this to be a superior option than drawing electorates straddling different suburban corridors, or disparate regions. This strategy also helps maintain the continuity of other divisions between their old and new forms.

Another possible weakness with my submission is that I have ended up with a handful of divisions on the metropolitan fringe that barely meet the numerical requirements; being at the low end of the present tolerance range and the higher end of the projected tolerance range. I think this simply an unavoidable consequence of Melbourne's unevenly spread growth patterns. An attempt to combine high growth areas with low growth areas would probably involve drawing odd shapes that violate community of interest criteria.

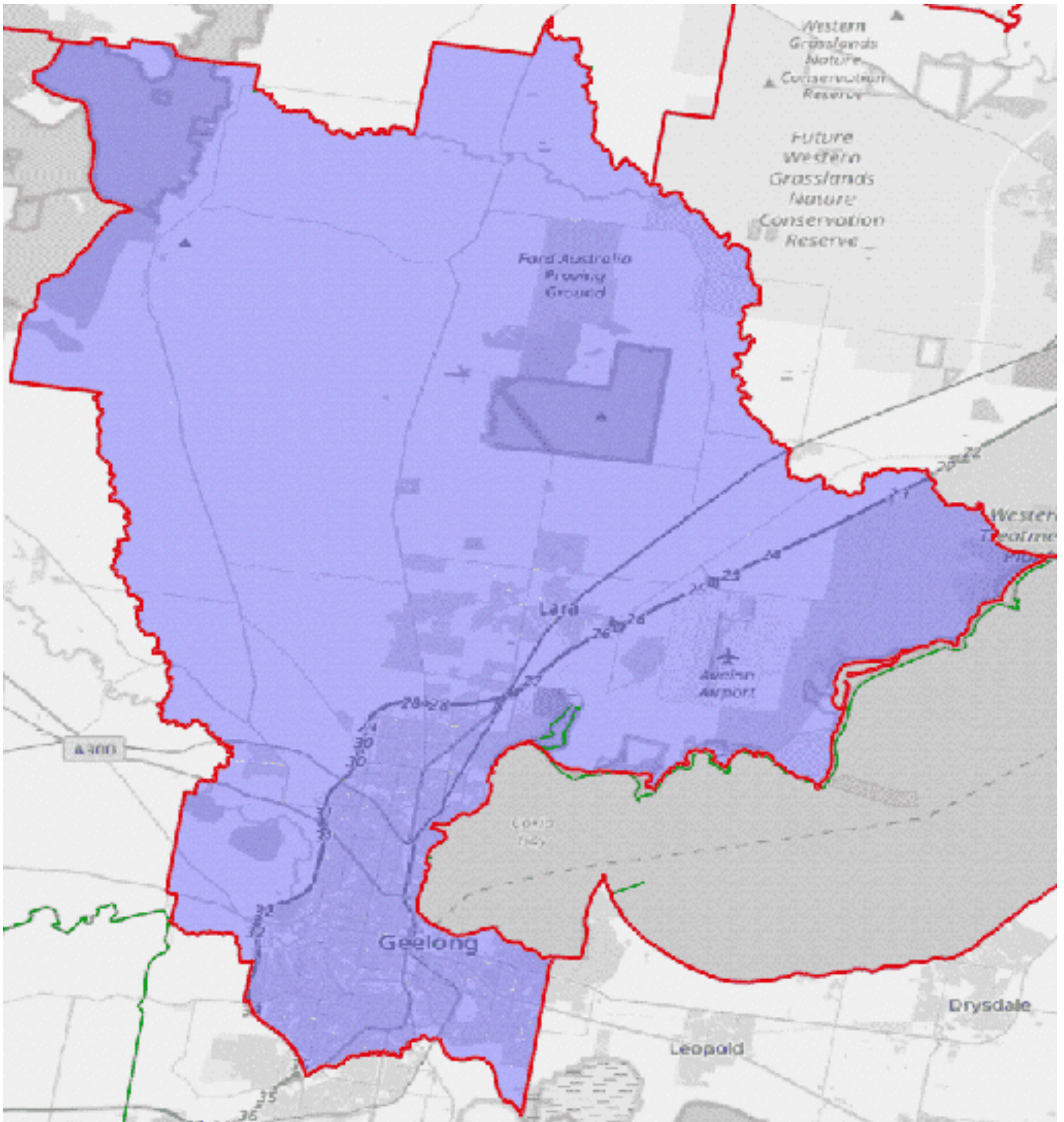
Western and Northern Victoria

The eight regional seats of western and northern Victoria are collectively about 30,000 voters above quota on projected figures. My inclination is to leave alone the boundary at Little River - separating Melbourne from Geelong, and certainly the Great Dividing Range will not be breached. That leaves Ballarat, Bendigo, and Nicholls as potential sources of transfers. Since Nicholls, along with neighbouring Indi, are roughly at parity, I opt not to touch either division. I draw down the surplus from Bendigo of approximately 6,000 voters, with the remaining approximately 24,000 voters drawn from Ballarat, triggering a radical redrawing of that division.

Corio

Corio is at parity and can be left unchanged.

Description	Enrolment	Projected enrolment
Current division of Corio	110,886	117,383



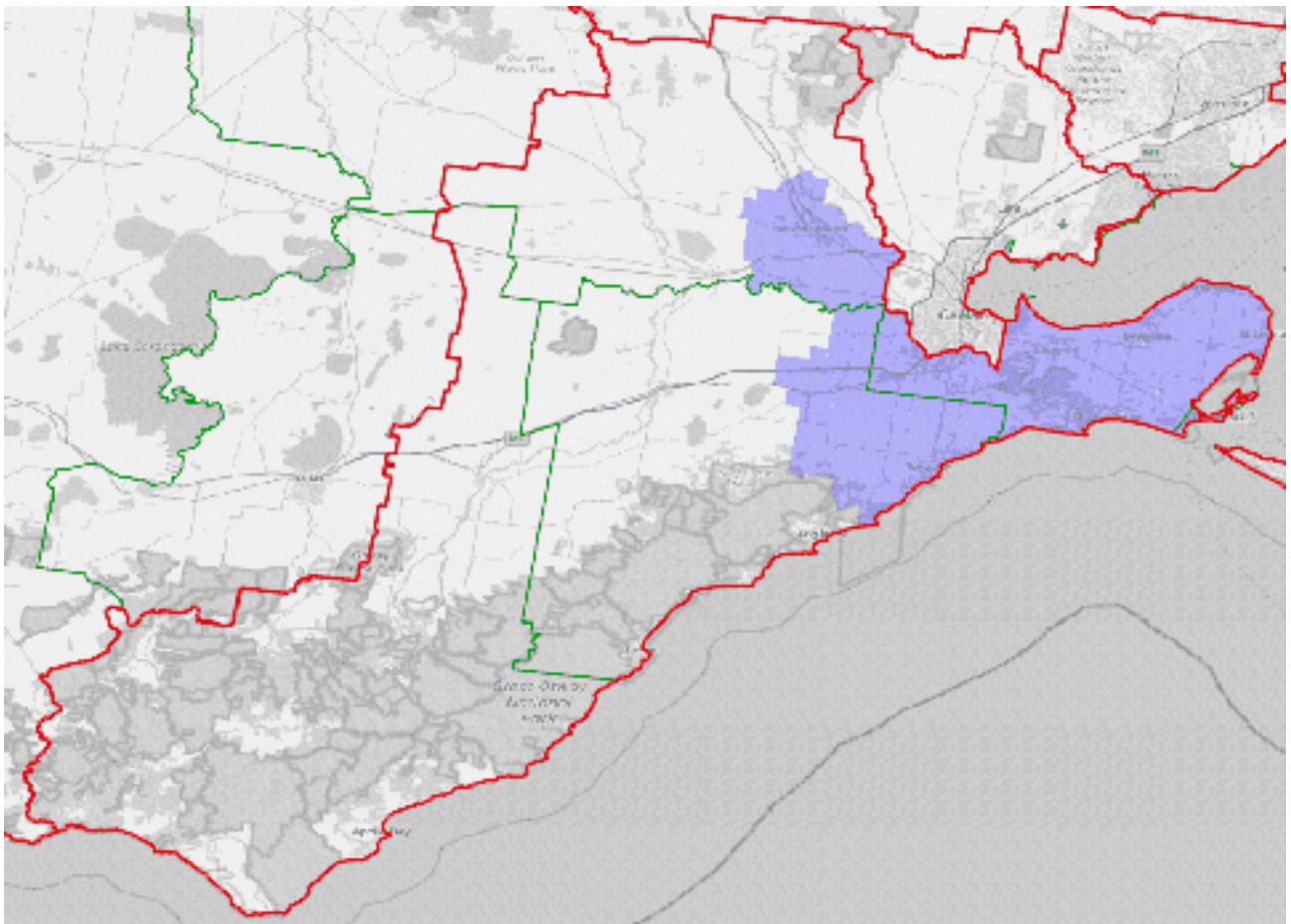
Suggested boundaries of Corio

Corangamite

Corangamite is well above tolerance and needs to shed approximately 19,000 voters on projected figures.

Given the geography of the electorate, the excisions must come at its northern and western extremities. The remainder of Colac-Otway Shire LGA is an obvious candidate, as is the more rural portion of Corangamite's share of Golden Plains shire. This leaves us with two competing claims for retention in Corangamite: Bannockburn on the one hand; the western part of Surf Coast LGA on the other. Whilst I can see the desirability of retaining all or most of Surf Coast LGA in the division, I have chosen to retain Bannockburn given its close proximity to Geelong. (Retaining Bannockburn in Corangamite also helps with my approach to the division of Ballarat, see below.) Thus, the coastal strip from Anglesea to Lorne is excised, as is the town of Winchelsea.

Description	Enrolment	Projected enrolment
Current division of Corangamite	116,461	135,907
LESS Colac-Otway Shire LGA	-4,106	-4,063
LESS Golden Plains South SA2	-4,565	-5,145
LESS Lorne - Anglesea SA2	-4,459	-4,638
LESS Winchelsea SA2 (part)	-3,335	-3,427
Total	99,996	118,634



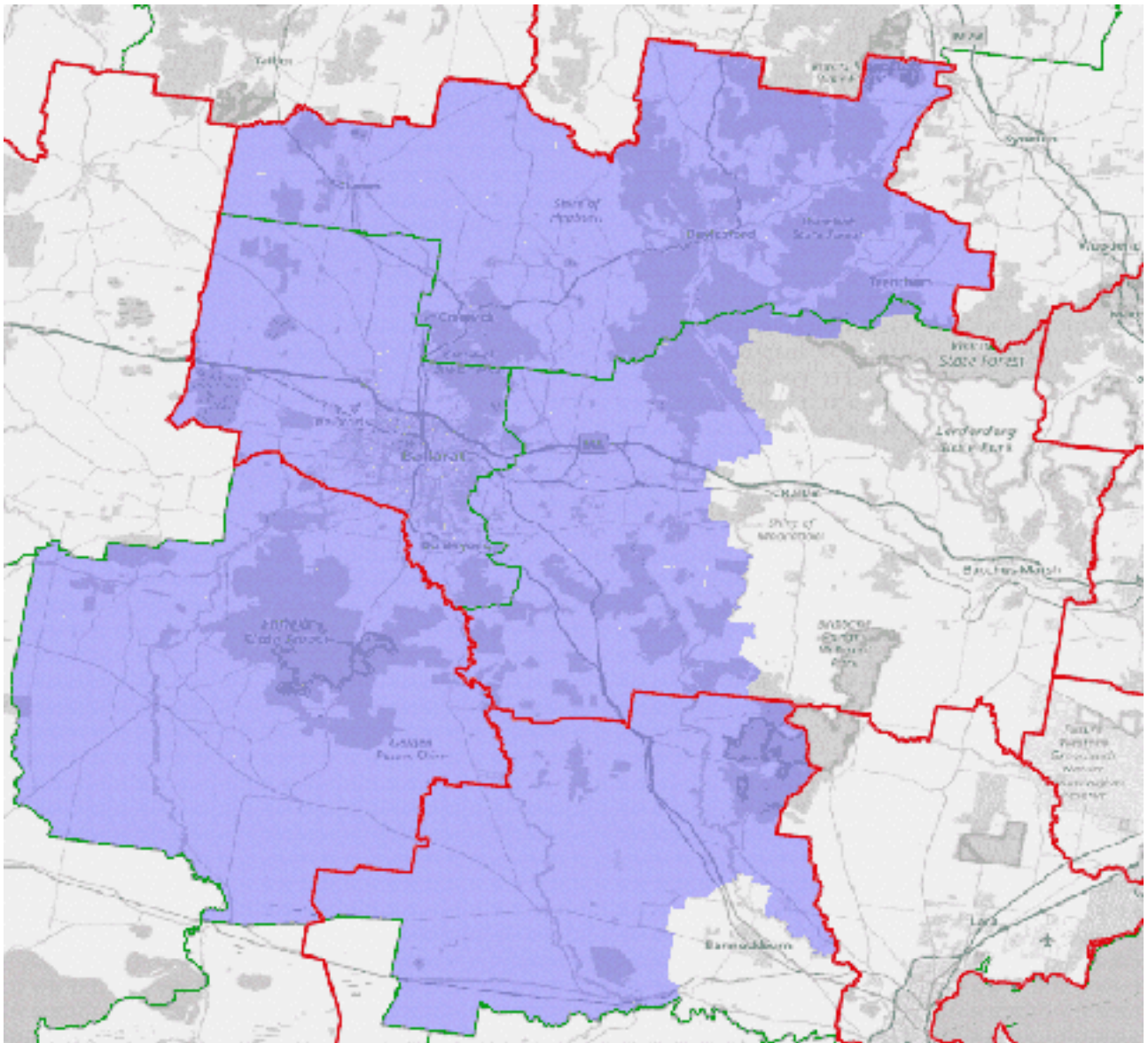
Suggested boundaries of Corangamite

Ballarat

Ballarat is well above tolerance on projected figures and needs to shed approximately 10,000 voters. An obvious solution is move the division's second population centre, Bacchus Marsh, to a Melbourne based seat. Given the size of Bacchus Marsh this requires compensating adjustments elsewhere. I've taken the opportunity to bring Golden Plains Shire LGA into the division (sans Bannockburn, see above). This is a good fit as Golden Plains Shire has a strong community of interest with the city of Ballarat.

In order to make the numbers work, I've transferred both Bacchus Marsh SA2 and the Bacchus Marsh Region SA2 (surrounding Ballan), retaining only the western most portion of Moorabool Shire LGA.

Description	Enrolment	Projected enrolment
Current division of Ballarat	117,072	127,041
<i>LESS</i> Bacchus Marsh SA2	-16,343	-18,227
<i>LESS</i> Bacchus Marsh Region SA2	-4,723	-4,925
from Corangamite		
Golden Plains Shire LGA	4,565	5,145
from Wannon		
Golden Plains Shire LGA	7,325	7,954
Total	107,896	116,988



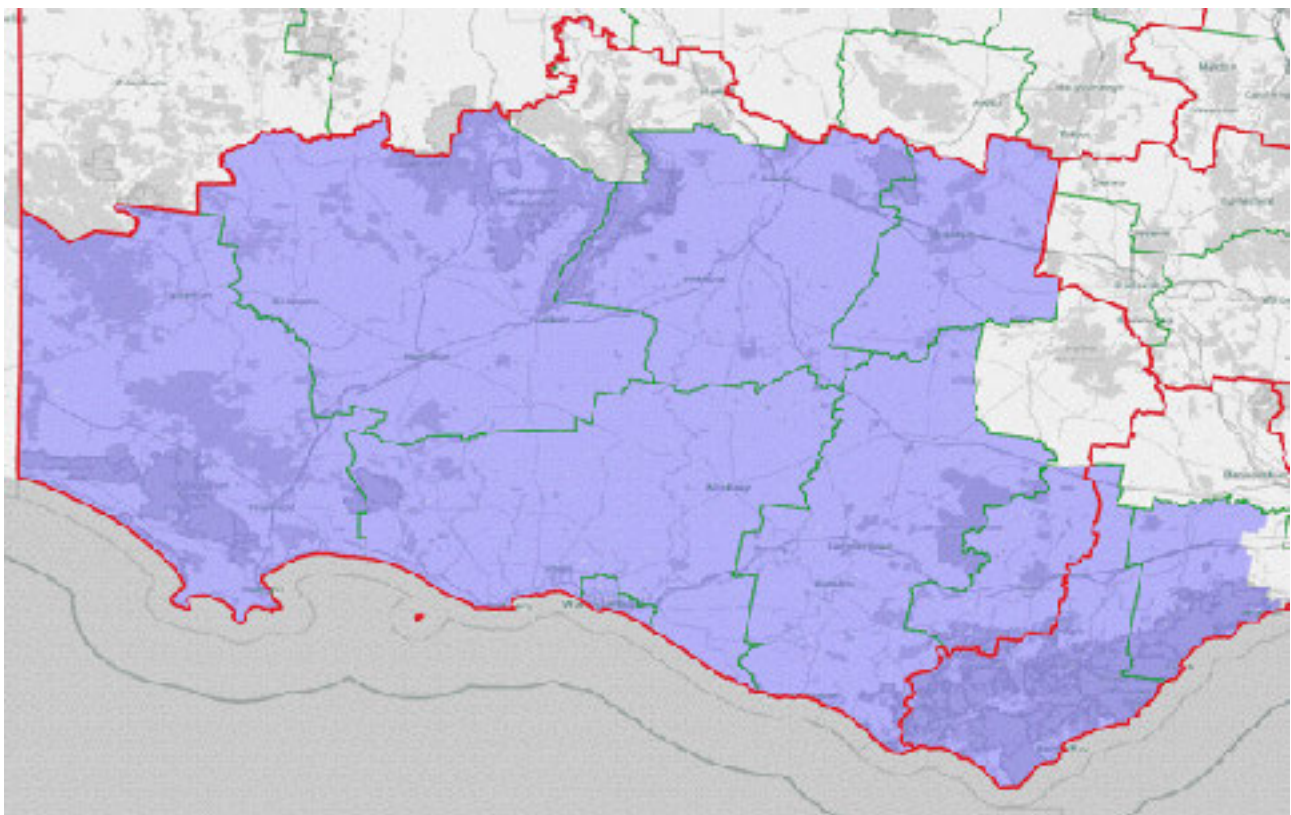
Suggested boundaries of Ballarat

Wannon

Whilst on its present boundaries Wannon is well within tolerance, the redrawing of two of its neighbours - Ballarat and Corangamite - forces it to change.

As discussed, Wannon loses its share of Golden Plains Shire LGA to Ballarat. It unites Colac-Otway Shire LGA and gains a significant portion of Surf Coast Shire LGA from Corangamite. Collectively these changes place the division above tolerance on current enrolment figures. It therefore make sense to cede its portion of Northern Grampians LGA, currently split with Mallee.

Description	Enrolment	Projected enrolment
Current division of Wannon	115,433	116,545
LESS Golden Plains Shire LGA	-7,325	-7,954
LESS Northern Grampians Shire LGA	-5,781	-5,617
from Corangamite		
Colac-Otway Shire LGA	4,106	4,063
Lorne - Anglesea SA2	4,459	4,638
Winchelsea SA2 (part)	3,335	3,427
Total	114,227	115,102

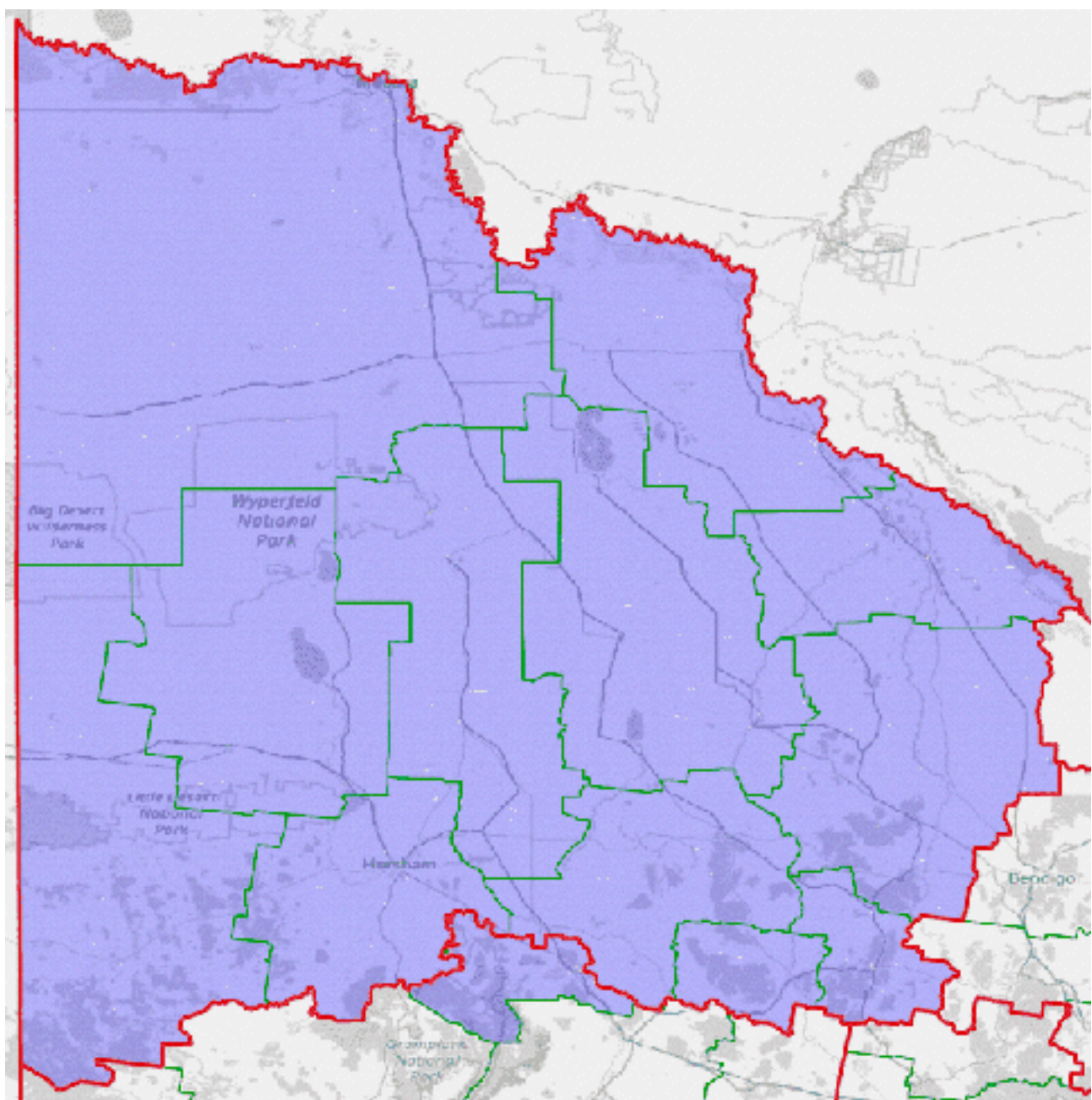


Suggested boundaries of Wannon

Mallee

Mallee is within tolerance, albeit at the lower end on projected figures. The changes to Wannon require that Mallee gains the remainder of Northern Grampians LGA (surrounding Stawell). No other changes are required.

Description	Enrolment	Projected enrolment
Current division of Mallee	113,801	113,046
from Wannon		
Northern Grampians Shire LGA	5,781	5,617
Total	119,582	118,663

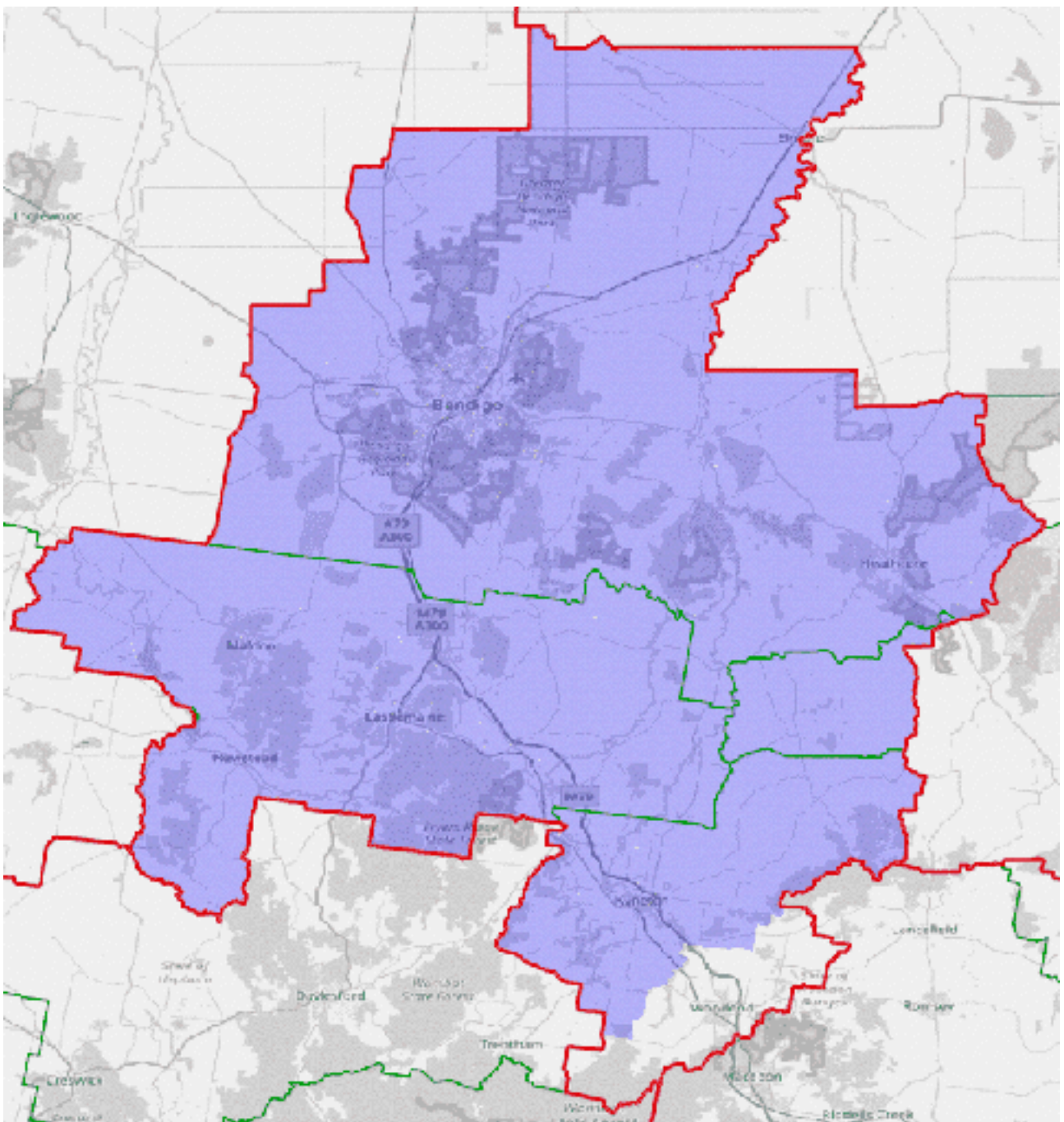


Suggested boundaries of Mallee

Bendigo

Bendigo is above tolerance on projected figures, needing to lose approximately 6,000 voters on projected figures. Excising Woodend at its south eastern extremity provides an obvious remedy.

Description	Enrolment	Projected enrolment
Current division of Bendigo	114,350	123,958
LESS Woodend SA2	-5,529	-6,140
Total	108,821	117,818

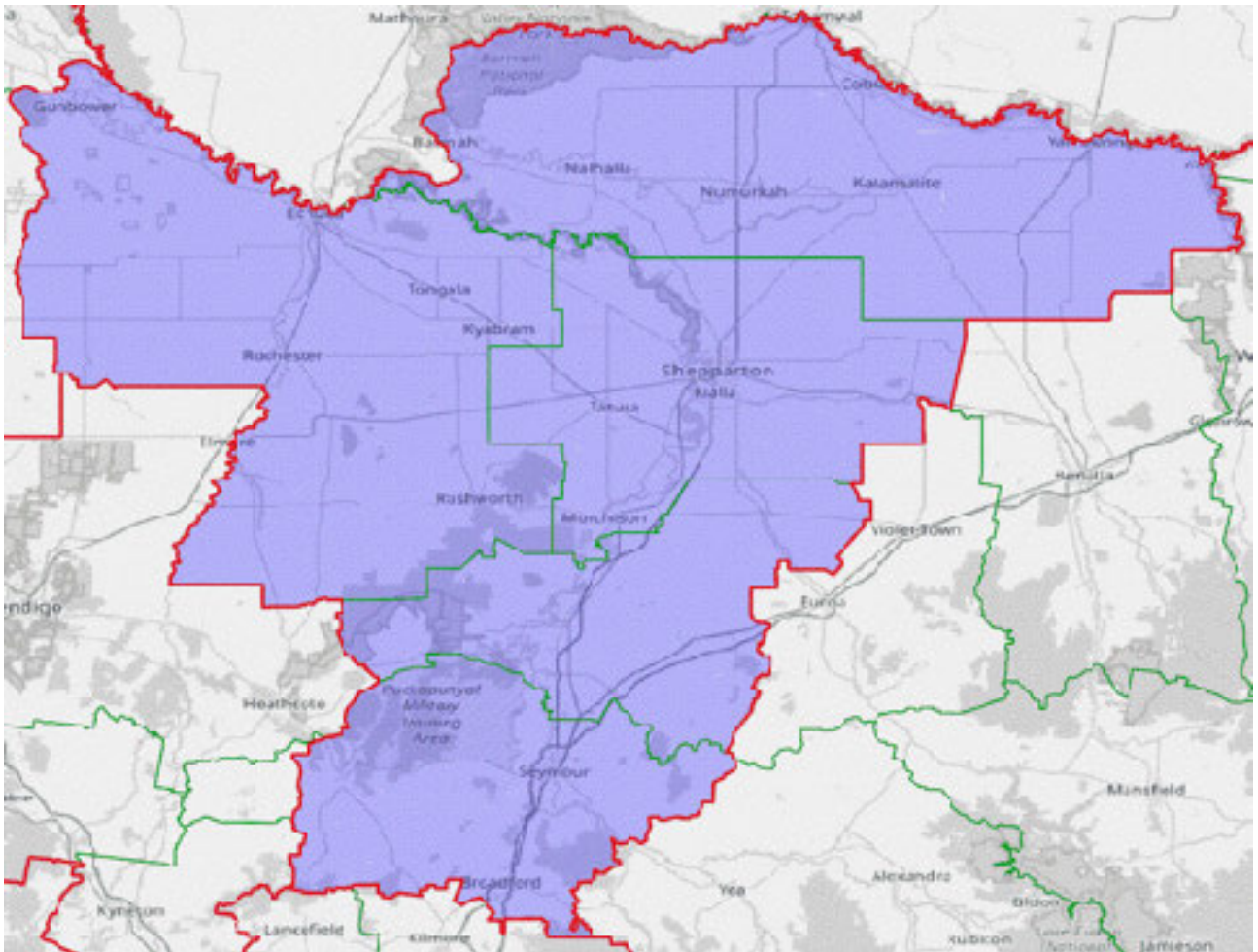


Suggested boundaries of Bendigo

Nicholls

No change is required to Nicholls.

Description	Enrolment	Projected enrolment
Current division of Nicholls	112,151	114,676

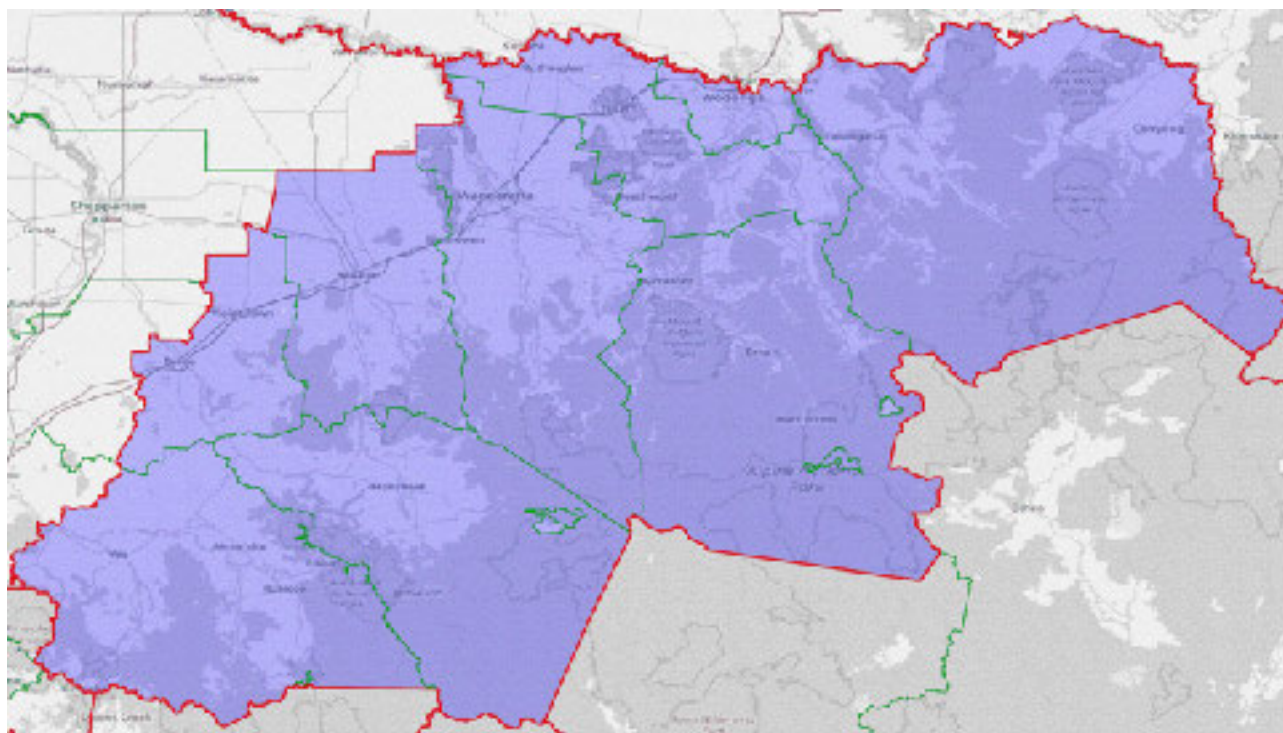


Suggested boundaries of Nicholls

Indi

No change is required to Indi.

Description	Enrolment	Projected enrolment
Current division of Indi	113,713	118,756



Suggested boundaries of Indi

Western and Northern Melbourne

The western and northern suburbs of Melbourne are collectively the state's biggest growth area. I've attempted to keep most of the seats similar to their existing form. For the outer most seats this generally means contractions at their eastern ends, whilst those further in contract at their northern ends. This creates room for the new seat of Hawke and the redrawing of McEwen.

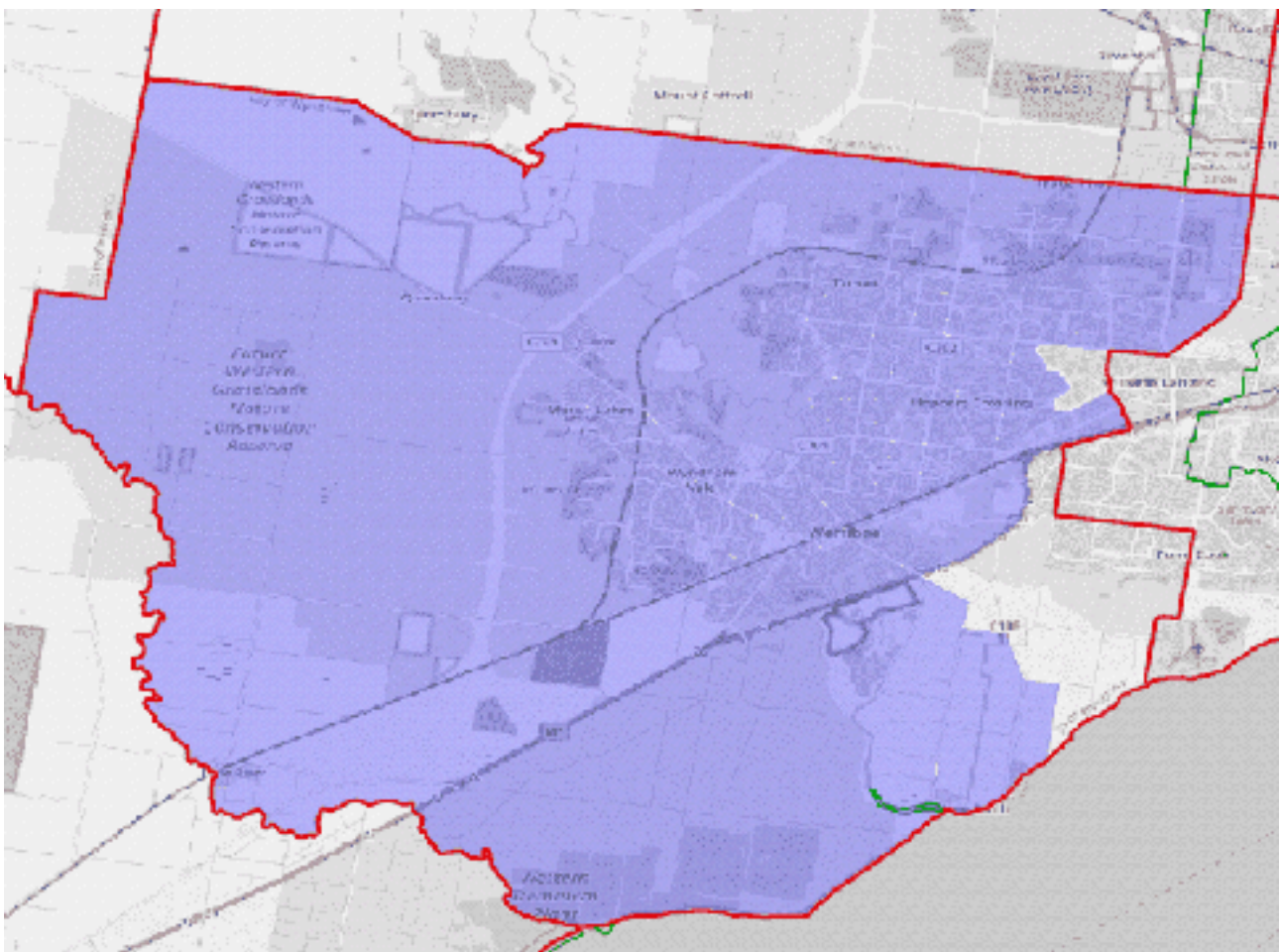
Lalor

Lalor is projected to be well over quota and needs to shed approximately 15,000 projected voters.

The obvious place to transfer is Point Cook, currently split between Lalor and Gellibrand. This gets us most of the way there, but with further change still required I also transfer that part of Truganina south of Sayers Rd.

Description	Enrolment	Projected enrolment
Current division of Lalor	113,148	132,793
LESS Point Cook - South SA2	-7,375	-9,300
LESS Werribee - South SA2 (part)	-1,494	-2,361
LESS Truganina SA2 (part)	-2,953	-3,691
Total	101,326	117,441

Note: Part of Point Cook lies within a Werribee SA1. It may be useful to split this area along the suburban boundary.

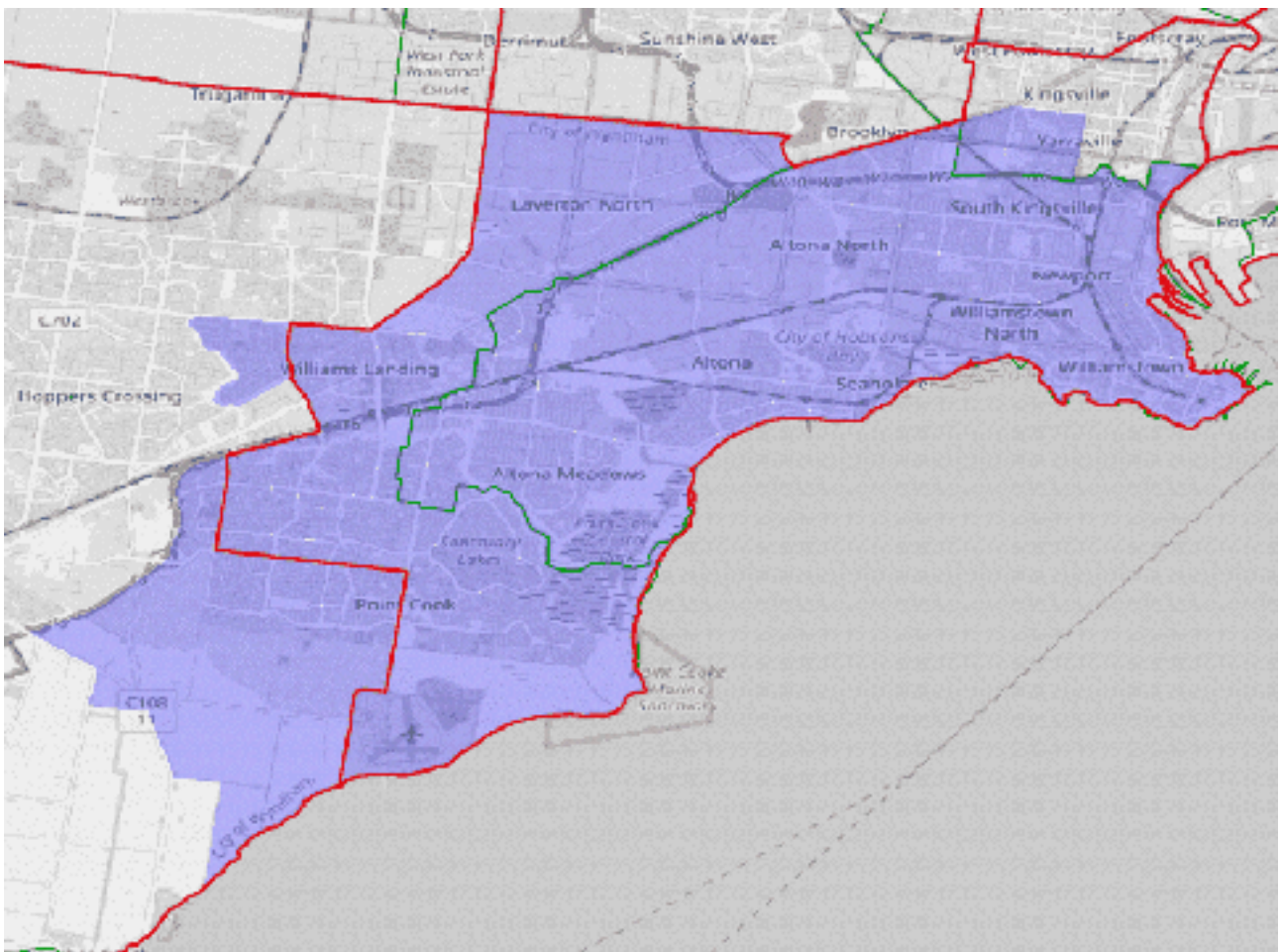


Suggested boundaries of Lalor

Gellibrand

Gellibrand's absorption of Lalor's surplus means compensating adjustments must be made at its north-eastern end. Getting Gellibrand back to parity requires the excision of its share of Footscray and West Footscray, Seddon, Kingsville and the part of Yarraville east of Williamstown Rd.

Description	Enrolment	Projected enrolment
Current division of Gellibrand	112,890	121,841
LESS Footscray SA2	-5,048	-5,408
LESS Seddon - Kingsville	-6,699	-6,905
LESS West Footscray - Tottenham SA2	-2,479	-2,612
LESS Yarraville SA2 (part)	-6,134	-6,528
from Lalor		
Point Cook - South SA2	7,375	9,300
Werribee - South SA2 (part)	1,494	2,361
Truganina SA2 (part)	2,953	3,691
Total	104,352	115,740

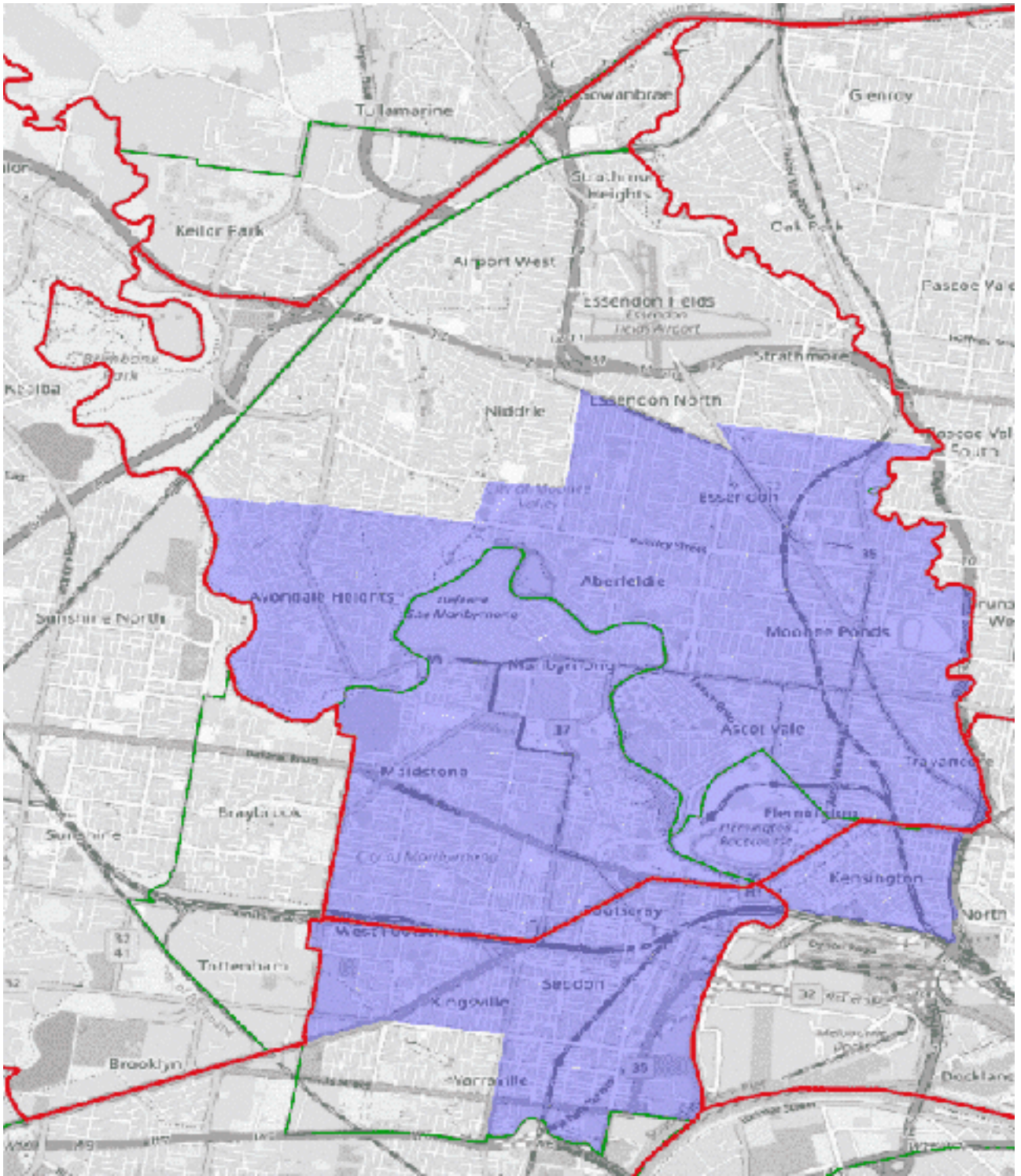


Suggested boundaries of Gellibrand

Maribyrnong

Maribyrnong must shift south to accommodate the combined Gellibrand and Lalor surplus. I suggest using this opportunity to consolidate Maribyrnong as a more compact inner west seat. As such it also picks up Kensington, whilst shedding Keilor East, Niddrie and everything north of Keilor Rd and Woodland St.

Description	Enrolment	Projected enrolment
Current division of Maribyrnong	114,182	122,142
LESS Airport West SA2	-5,897	-6306
LESS Essendon - Aberfeldie SA2 (part)	-2,003	-2225
LESS Essendon Airport SA2	-3	-3
LESS Gowanbrae SA2	-2,202	-2342
LESS Keilor SA2	-18	-18
LESS Keilor East SA2 (part)	-10,917	-11,415
LESS Niddrie - Essendon West SA2	-4253	-4594
LESS Strathmore SA2	-7405	-8031
from Gellibrand		
Footscray SA2	5,048	5,408
Seddon - Kingsville SA2	6,699	6,905
West Footscray - Tottenham SA2	2,479	2,612
Yarraville SA2 (part)	6,134	6,528
from Melbourne		
Kensington SA2	7,650	8,078
Total	109,494	116,739



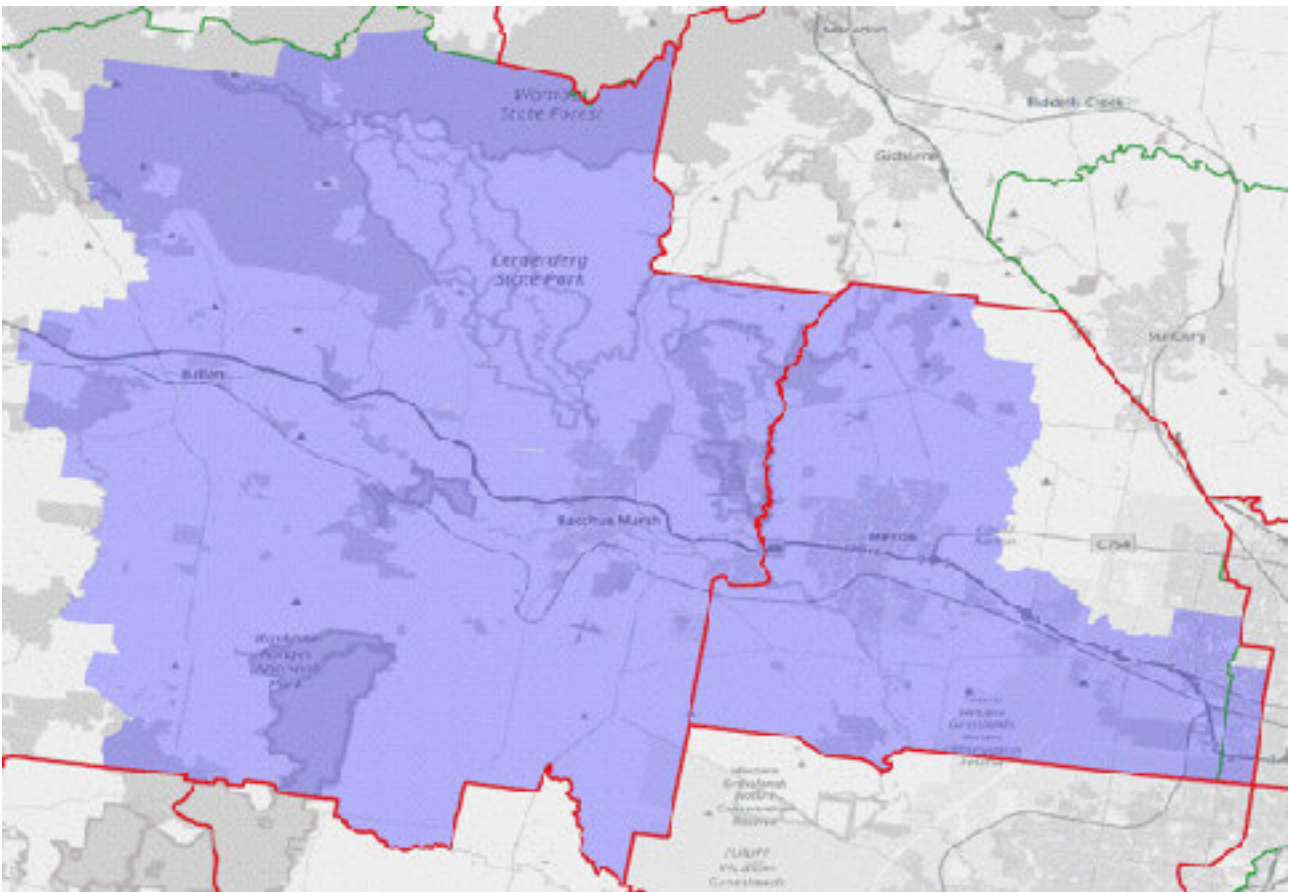
Suggested boundaries of Maribyrnong

Gorton

Given it no longer seems tenable to have Ballarat and Bacchus Marsh in the same electorate, pairing Bacchus Marsh with Melton instead seems a logical arrangement. Indeed, this replicates the present arrangement at state level. Redrawing Gorton to include Bacchus Marsh and Ballan means it has to shed areas at its eastern end. The division therefore loses everything east and north of Kororoit Creek, everything north of Taylors Rd, as well as the suburb of Albanvale.

That leaves us with an east-west elongated electorate based around the Western Freeway, centred on Melton and Bacchus Marsh.

Description	Enrolment	Projected enrolment
Current division of Gorton	115,985	134,656
<i>LESS</i> Hillside SA2	-15,424	-19,192
<i>LESS</i> Kings Park SA2	-3,676	-3,857
<i>LESS</i> Sunbury - South SA2	-2,991	-3,763
<i>LESS</i> Sydenham SA2	-798	-857
<i>LESS</i> Taylors Hill SA2	-11,832	-13,133
from Ballarat		
Bacchus Marsh SA2	16,343	18,227
Bacchus Marsh Region SA2	4,723	4,925
Total	102,330	117,006

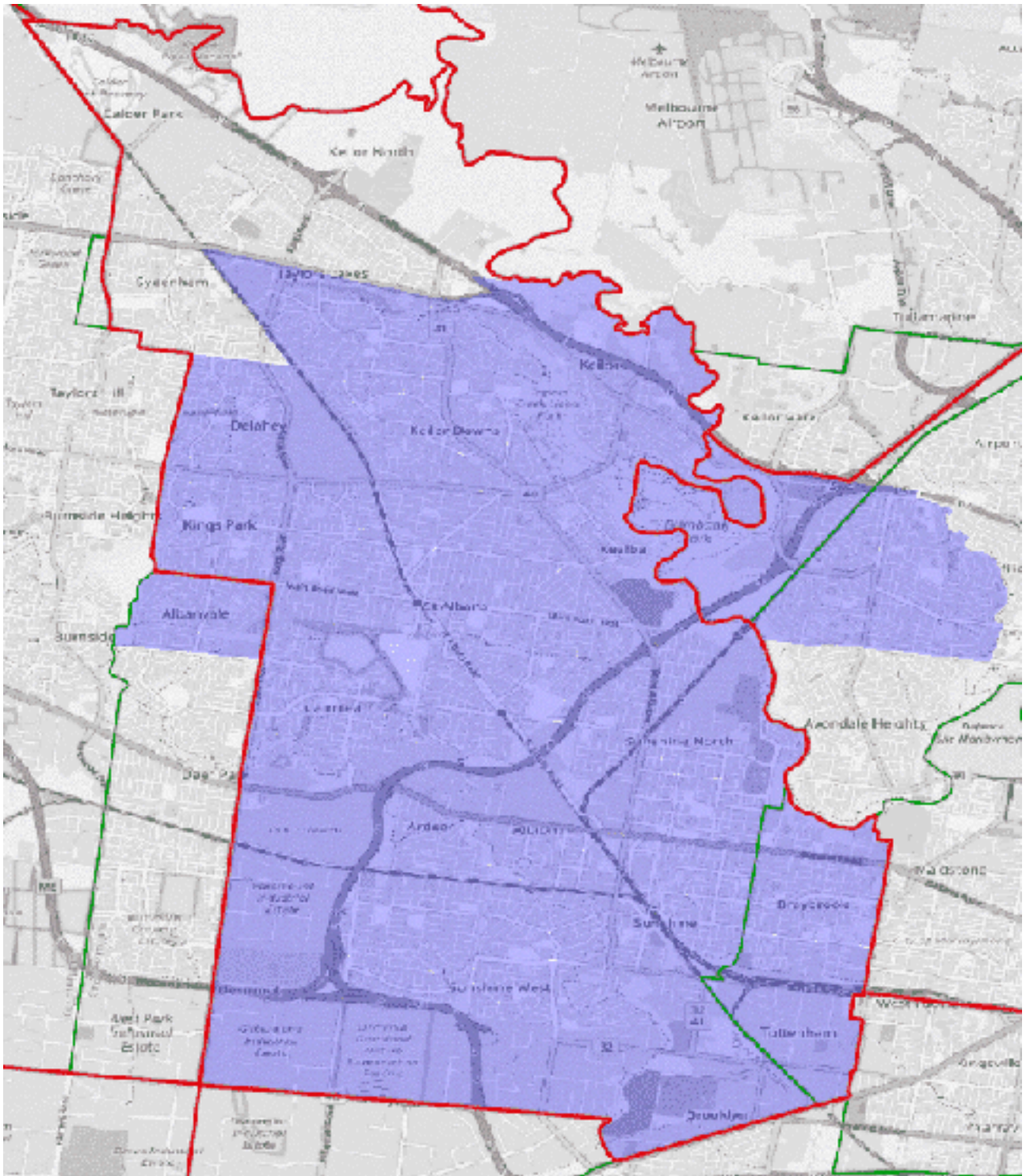


Suggested boundaries of Gorton

Fraser

Fraser remains a largely City of Brimbank LGA based division, sitting between Gorton and Maribyrnong. From the former it picks up Albanvale, from the latter Keilor East. This leaves compensation adjustments to be made at the division's northern end, so it sheds Sydenham and everything north of the Melton Highway.

Description	Enrolment	Projected enrolment
Current division of Fraser	109,599	113,291
<i>LESS</i> Sydenham SA2	-6,632	-6,903
<i>LESS</i> Taylors Lakes SA2	-7,196	-7,471
from Gorton		
Kings Park SA2	3,676	3,857
from Maribyrnong		
Keilor SA2	18	18
Keilor East SA2 (<i>part</i>)	10,917	11,415
Total	110,382	114,207



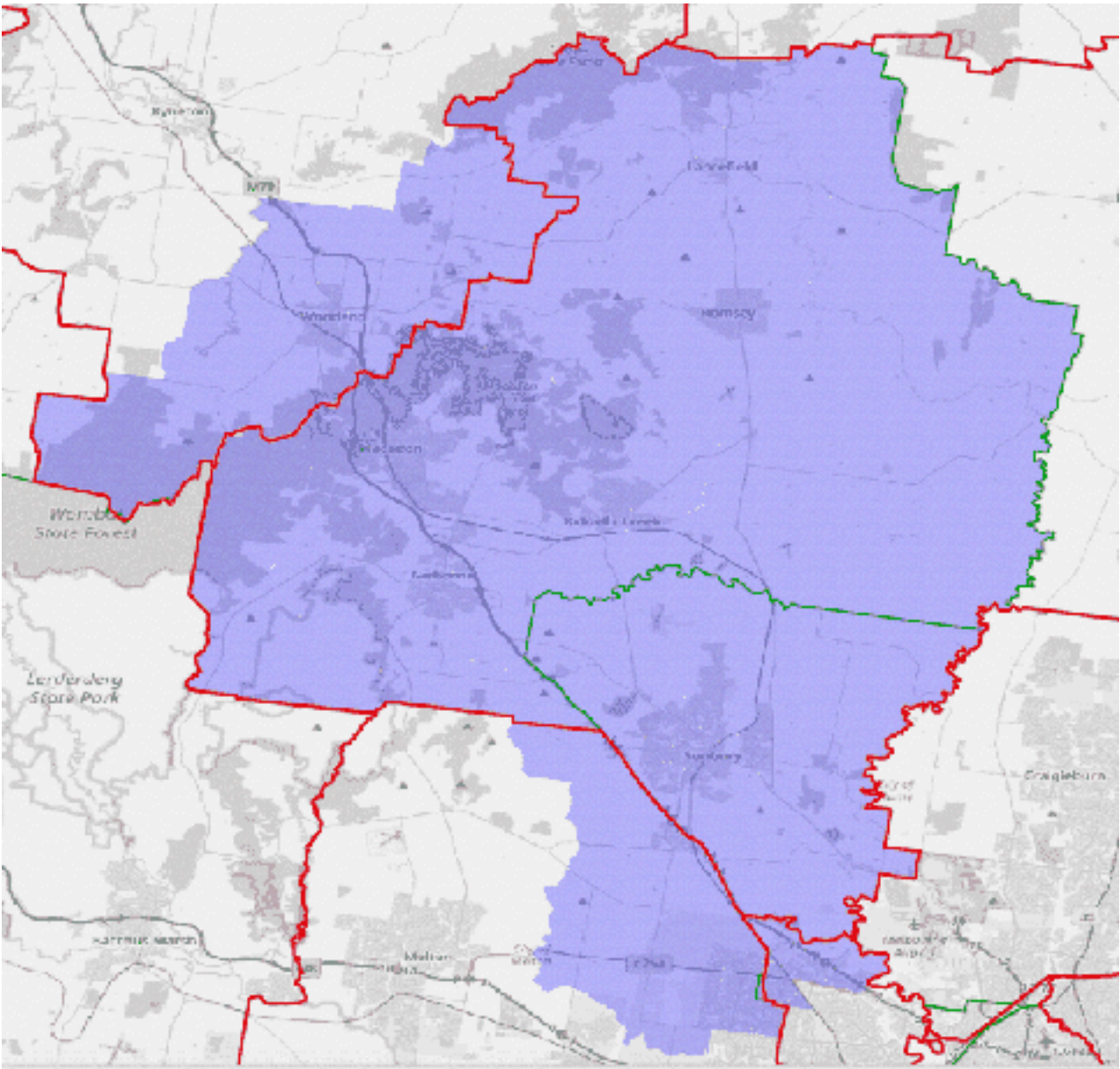
Suggested boundaries of Fraser

Hawke (new seat)

Hawke is a new division, based around the Macedon Ranges and Sunbury. In this it is similar in form to the old division of Burke, abolished in 2004. However, unlike the old Burke, I extend it southward not to Melton and Bacchus Marsh but instead along the Calder Highway to the outer edge of Melbourne's north-west suburbs.

Hawke takes in all of Macedon Ranges Shire LGA, with the exception of Kyneton. It includes all the Sunbury area, including Diggers Rest, as well as the northernmost suburbs in the City of Melton and City of Brimbank LGAs; in the former, everything north of Taylors Rd, in the latter Sydenham and everything north of the Melton Highway.

Description	Enrolment	Projected enrolment
from Bendigo		
Woodend SA2	5,529	6,140
from Fraser		
Sydenham SA2	6,632	6,903
Taylors Lakes SA2 (<i>part</i>)	7,196	7,471
from Gorton		
Hillside SA2	15,424	19,192
Sunbury - South SA2	2,991	3,763
Sydenham SA2	798	857
Taylors Hill SA2	11,832	13,133
from McEwen		
Gisborne SA2	9,896	10,561
Greenvale - Bulla SA2	500	561
Macedon SA2	2,532	2,591
Riddells Creek SA2	3,202	3,441
Romsey SA2	7,420	8,002
Sunbury SA2	9,823	10,306
Sunbury - South SA2	18,568	20,697
Woodend SA2	2	2
Total	102,345	113,620

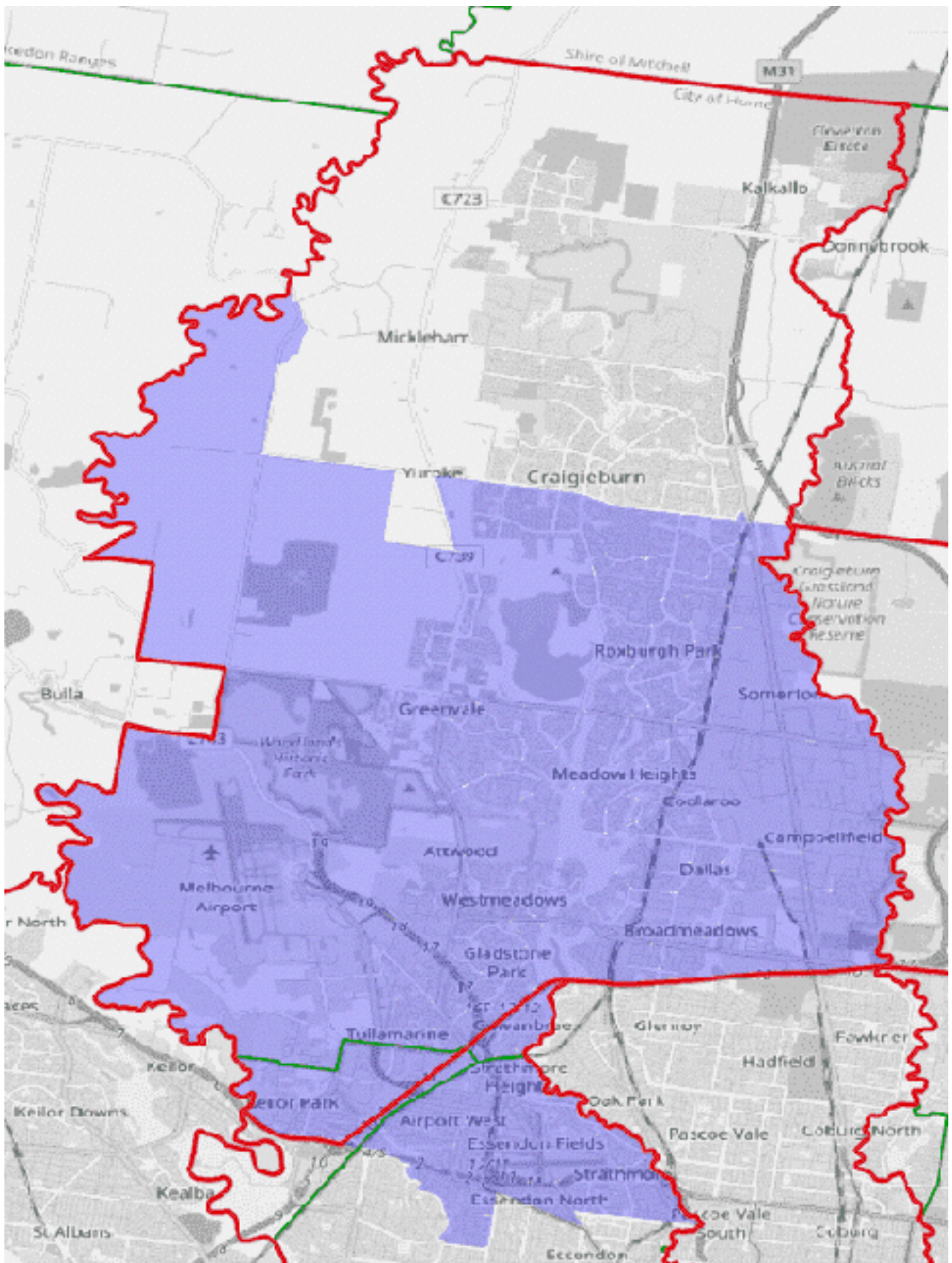


Suggested boundaries of Hawke (new seat)

Calwell

Calwell is forced to shift south to account for the growth in Melbourne's west. By including most of the area excised by Maribyrnong, Calwell now becomes the electorate of two airports - Tullamarine and Essendon - extending as far south as Niddrie, Essendon North, and Strathmore. My intention here is to move enough voters into Calwell at its southern end to create a strong boundary at its northern end, namely Craigieburn Rd.

Description	Enrolment	Projected enrolment
Current division of Calwell	112,712	130,063
LESS Craigieburn - Central SA2	-5,024	-5,045
LESS Craigieburn - North SA2	-6,706	-7,700
LESS Craigieburn - West SA2	-9,020	-12,478
LESS Mickleham - Yuroke SA2	-7,541	-12,805
from Maribyrnong		
Airport West SA2	5,897	6,306
Essendon - Aberfeldie SA2 (<i>part</i>)	2,003	2,225
Essendon Airport SA2	3	3
Gowanbrae SA2	2,202	2,342
Niddrie - Essendon West SA2	4,253	4,594
Strathmore SA2	7,405	8,031
Total	106,184	115,536

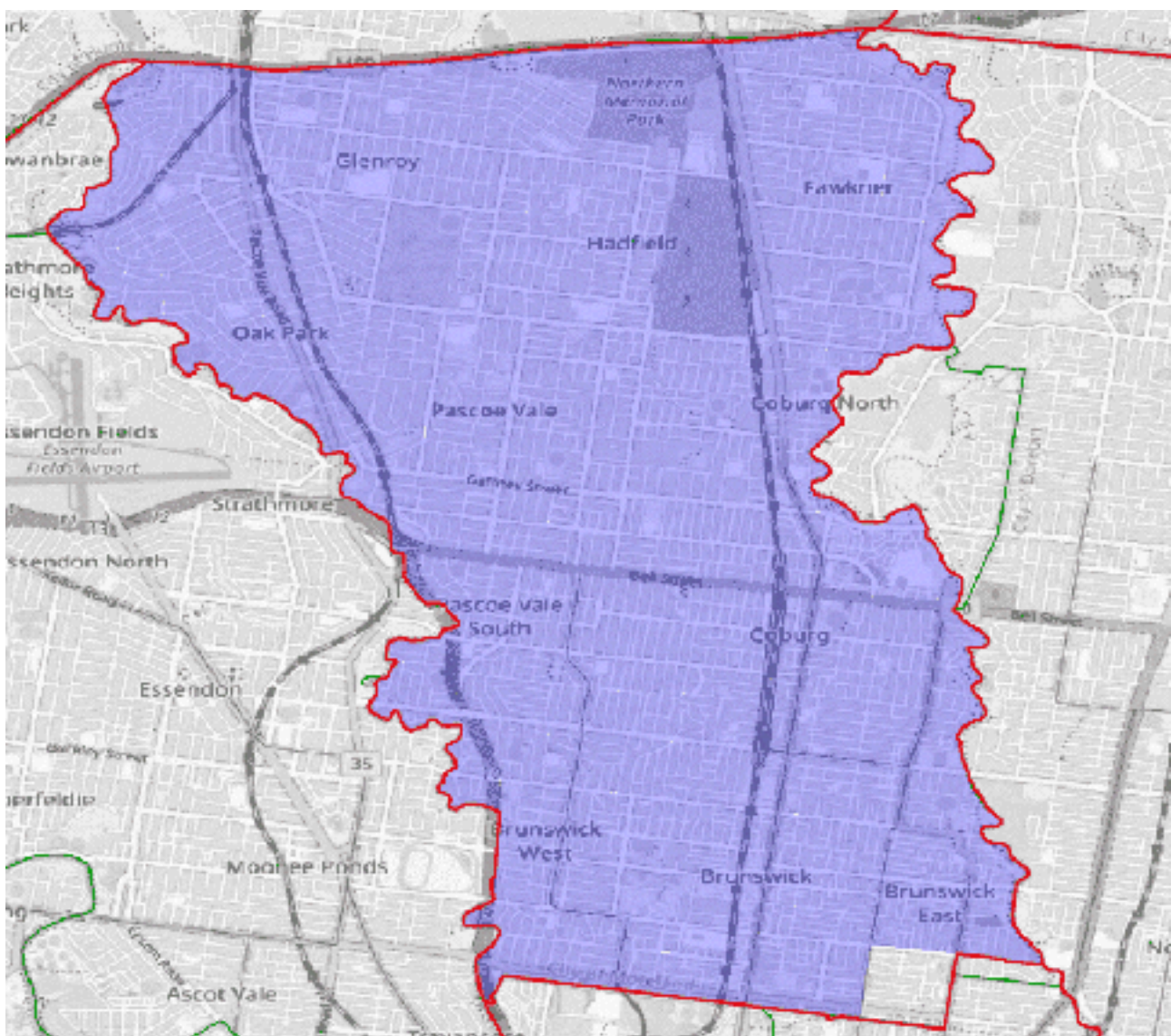


Suggested boundaries of Calwell

Wills

Wills is right at the limit of its tolerance on projected figures, so ought to lose a small number of voters. Given the strong boundaries to its north, west, and east, I have chosen to make the change at its southern end and remove that part of Brunswick East south of Glenlyon Rd and east of Lygon St.

Description	Enrolment	Projected enrolment
Current division of Wills	112,093	120,753
LESS Brunswick East SA2 (part)	-3,189	-3,876
Total	108,904	116,877

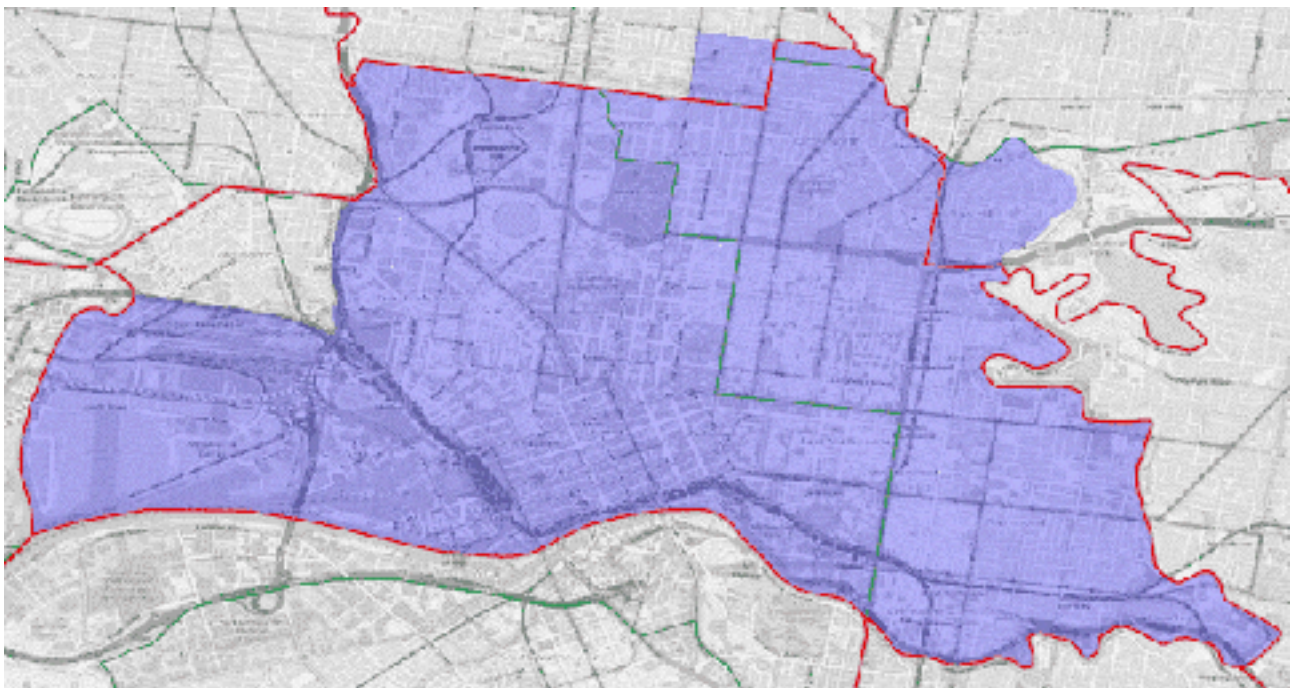


Suggested boundaries of Wills

Melbourne

Melbourne on current figures is at parity, but aforementioned transfers involving Flemington (to Maribyrnong) and part of Brunswick East (from Wills) remove more than they add. Uniting Clifton Hill (currently split with Cooper) within the division restores the balance.

Description	Enrolment	Projected enrolment
Current division of Melbourne	108,861	119,787
LESS Kensington SA2	-7,650	-8,078
from Cooper		
Yarra - North SA2 (<i>part</i>)	3,804	4,040
from Wills		
Brunswick East SA2 (<i>part</i>)	3,189	3,876
Total	108,204	119,625

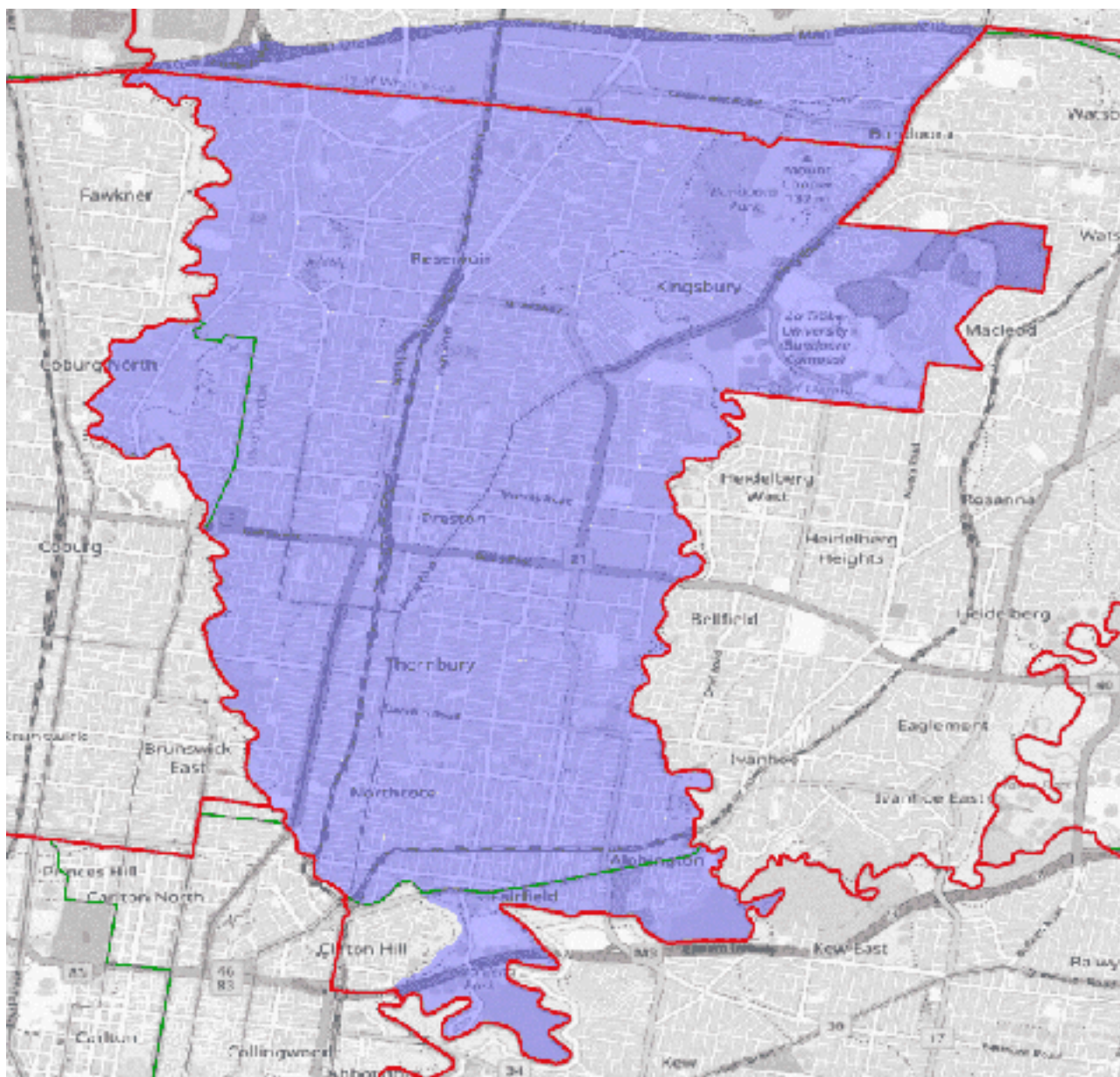


Suggested boundaries of Melbourne

Cooper

On its current boundaries, Cooper is at parity. To offset the loss of Clifton Hill, I suggest moving the northern boundary to the M80 Ring Road.

Description	Enrolment	Projected enrolment
Current division of Cooper	112,825	119,559
LESS Yarra - North SA2 (part)	-3,804	-4,040
from Scullin		
Bundoora - West SA2 (part)	4,141	4,247
Thomastown SA2 (part)	18	18
Total	113,180	119,784

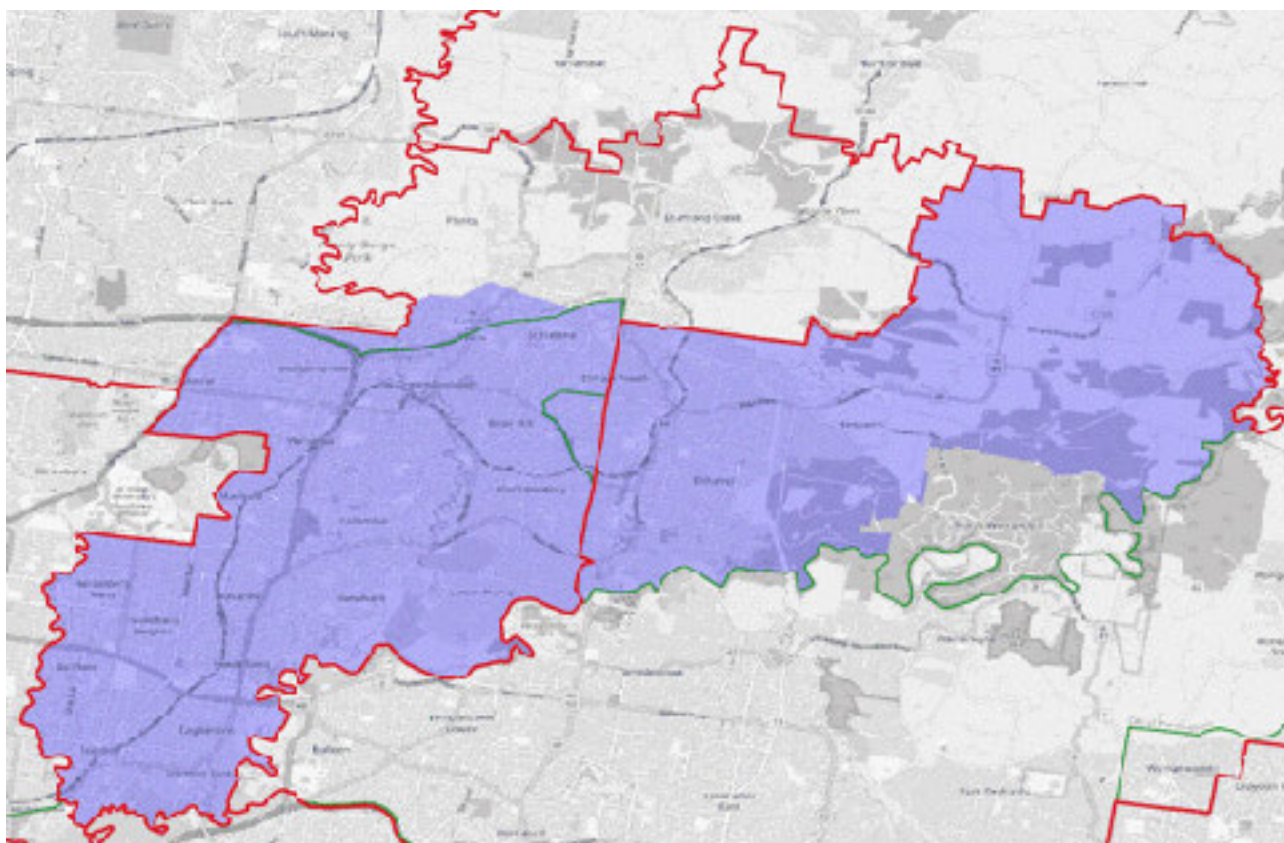


Suggested boundaries of Cooper

Jagajaga

With Menzies losing most of its area north of the Yarra River (see below), that permits Eltham and Eltham North to be united within Jagajaga. The localities of Research and Kangaroo Ground are also added. Compensating adjustments are required to the north, so the localities of Plenty, Diamond Creek, and Wattle Glen are excised. Whilst the numbers permit the inclusion of North Warrandyte in the division, I decided against this as it would have left Jagajaga towards the top end of the projected tolerance range.

Description	Enrolment	Projected enrolment
Current division of Jagajaga	108,042	112,132
LESS Plenty - Yarrambat SA2	-1,914	-2,035
LESS Wattle Glen - Diamond Creek SA2	-10,517	-10,886
from Menzies		
Eltham SA2	15,796	16,255
Research - North Warrandyte SA2 (<i>part</i>)	2,924	3,045
Total	114,331	118,511



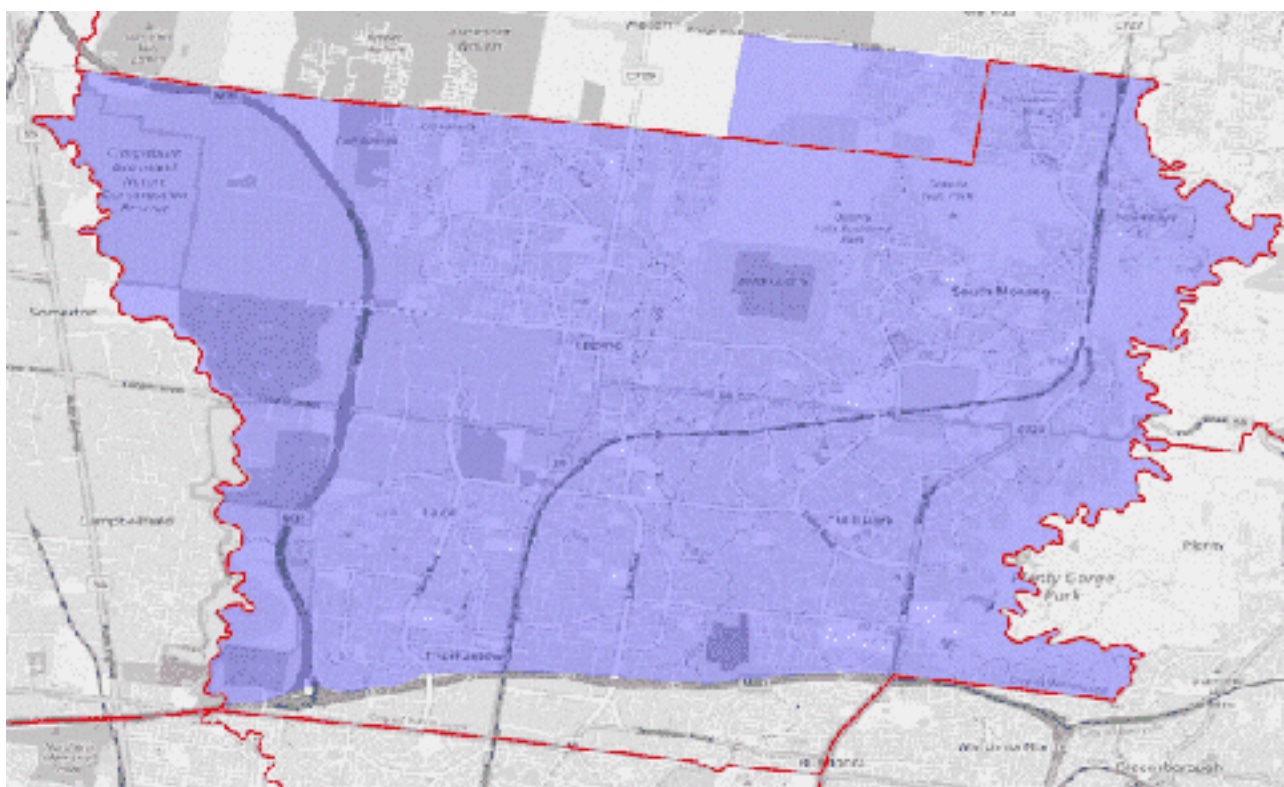
Suggested boundaries of Jagajaga

Scullin

The northward extension of Cooper pushes Scullin below tolerance on projected figures. This is remedied by expanding the division northward. I add more of Mernda, taking in everything up to Bridge Inn Rd.

Description	Enrolment	Projected enrolment
Current division of Scullin	107,312	116,741
LESS Bundoora - West SA2 (part)	-4,141	-4,247
LESS Thomastown SA2 (part)	-18	-18
from McEwen		
Mernda SA2 (part)	2,405	3,331
Total	105,558	115,807

Note: I have split SA1 2143410 along Bridge Inn road and assumed all of its population belongs to the southern portion.



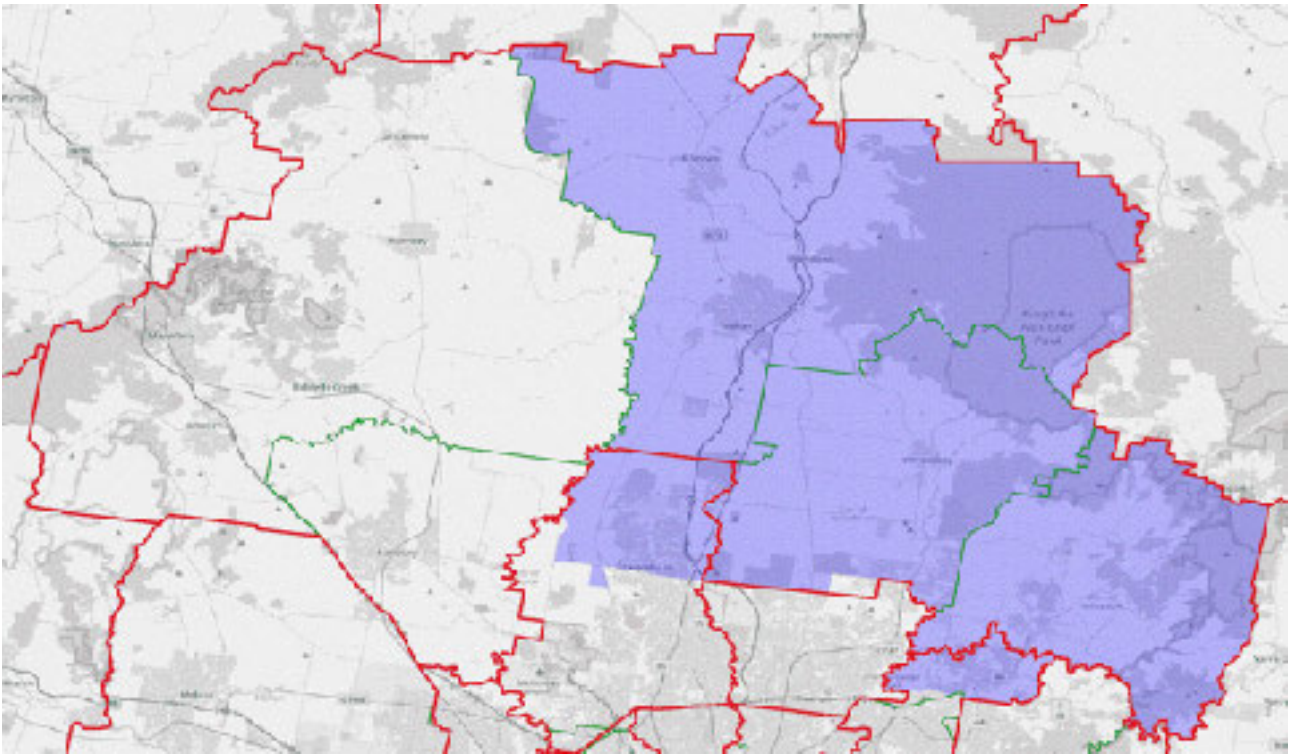
Suggested boundaries of Scullin

McEwen

With the western half of the current electorate forming the basis for the new seat of Hawke, McEwen is redrawn as a more compact division on Melbourne's north east fringe. It retains its share of Mitchell Shire, Whittlesea Shire (minus a small transfer in Mernda), and Nillumbik Shire LGAs. To that it adds the localities of Craigieburn north of Craigieburn Rd, Mickleham, and Yuroke (from Calwell), as well as Plenty, Diamond Creek, and Wattle Creek (from Jagajaga).

This area covers a number of high growth locations, making it difficult to satisfy both numerical requirements. My suggested division does so, but only just. I have ended up with an electorate very close to the lower end of the permitted current enrolment range and very close to the upper end of the permitted projected enrolment range.

Description	Enrolment	Projected enrolment
Current division of McEwen	112,032	129,413
LESS Gisborne SA2	-9,896	-10,561
LESS Greenvale - Bulla SA2	-500	-561
LESS Macedon SA2	-2,532	-2,591
LESS Mernda SA2 (<i>part</i>)	-2,405	-3,331
LESS Riddells Creek SA2	-3,202	-3,441
LESS Romsey SA2	-7,420	-8,002
LESS Sunbury SA2	-9,823	-10,306
LESS Sunbury - South SA2	-18,568	-20,697
LESS Woodend SA2	-2	-2
from Calwell		
Craigieburn - Central SA2	5,024	5,045
Craigieburn - North SA2	6,706	7,700
Craigieburn - West SA2	9,020	12,478
Mickleham - Yuroke SA2	7,541	12,805
from Jagajaga		
Plenty - Yarrambat SA2	1,914	2,035
Wattle Glen - Diamond Creek SA2	10,517	10,886
Total	98,406	120,870



Suggested boundaries of McEwen

Eastern Melbourne and Eastern Victoria

The last redistribution saw a massive shake up of the electoral boundaries in the eastern suburbs of Melbourne,. This resulted in a lot of good outcomes as seats were drawn to align closely with administration boundaries or major roads. I suggest retaining the bulk of these changes, only making modifications where necessary.

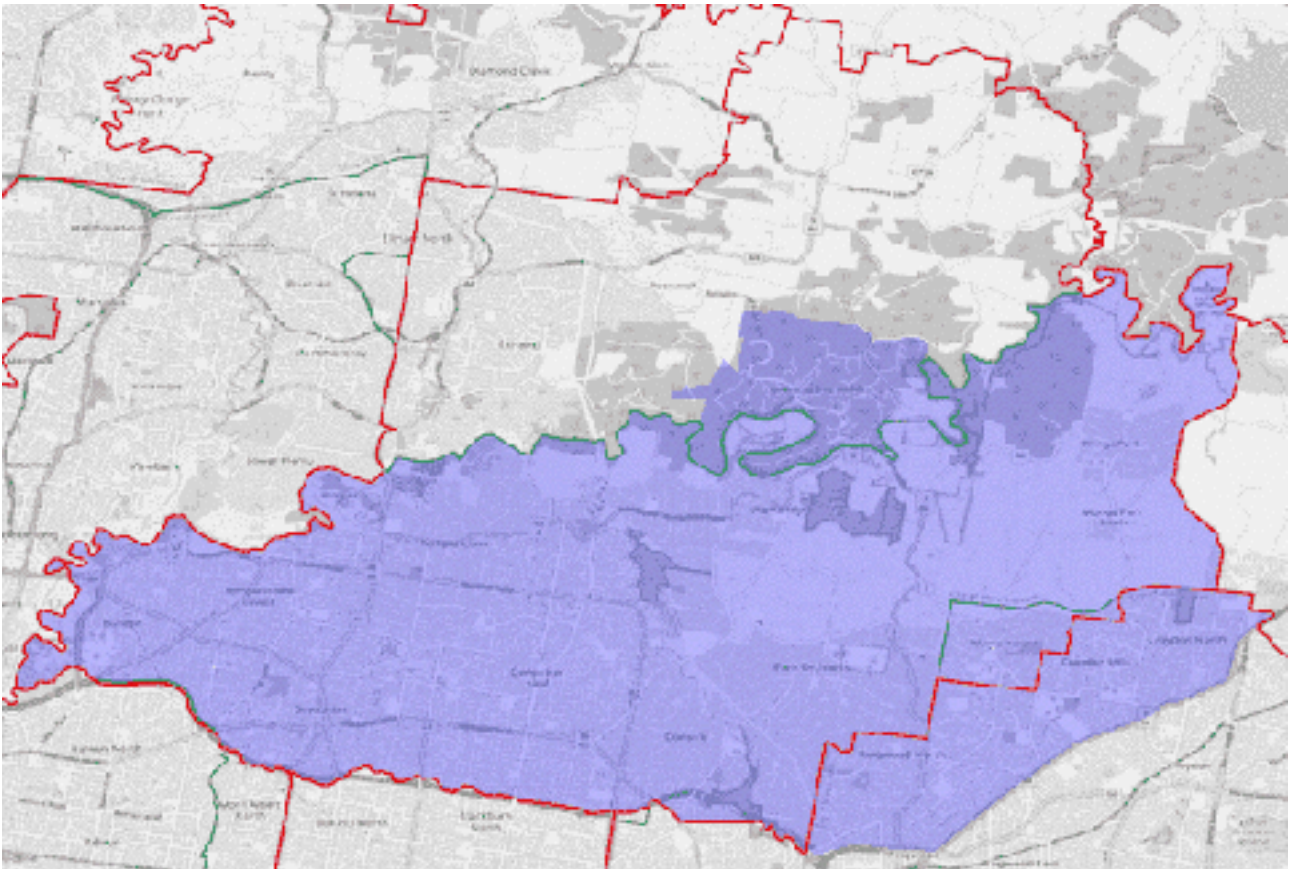
As a collective, the 18 seats of the eastern suburbs and eastern Victoria need to shed electors. The obvious place to do that is in Menzies, which can return to something like its former form, mostly south of the river.

The real surplus of voters lies in the outer south east, where projections point to massive enrolment growth. The change in Menzies results in a domino effect through the 'middle ring' suburbs with the divisions losing and gaining electors in largely equal measure, until the outer south east is reached and the surpluses are absorbed from those divisions. The seats lying outside the middle ring and the outer south east - both further in and further out - are left largely unchanged.

Menzies

Menzies returns to its former form lying south of the Yarra River, with the exception of North Warrandyte. The division shifts south in the Ringwood-Croydon area, utilising the Ringwood Bypass and Maroondah Hwy as its southern boundary.

Description	Enrolment	Projected enrolment
Current division of Menzies	108,268	112,720
LESS Eltham SA2	-15,796	-16,255
LESS Research - North Warrandyte SA2 (<i>part</i>)	-2,924	-3,045
from Deakin		
Croydon Hills - Warranwood SA2	9,497	9,708
Croydon - West SA2 (<i>part</i>)	2,004	2,098
Ringwood SA2 (<i>part</i>)	6,229	6,602
Ringwood North SA2	7,021	7,174
Total	114,299	119,002

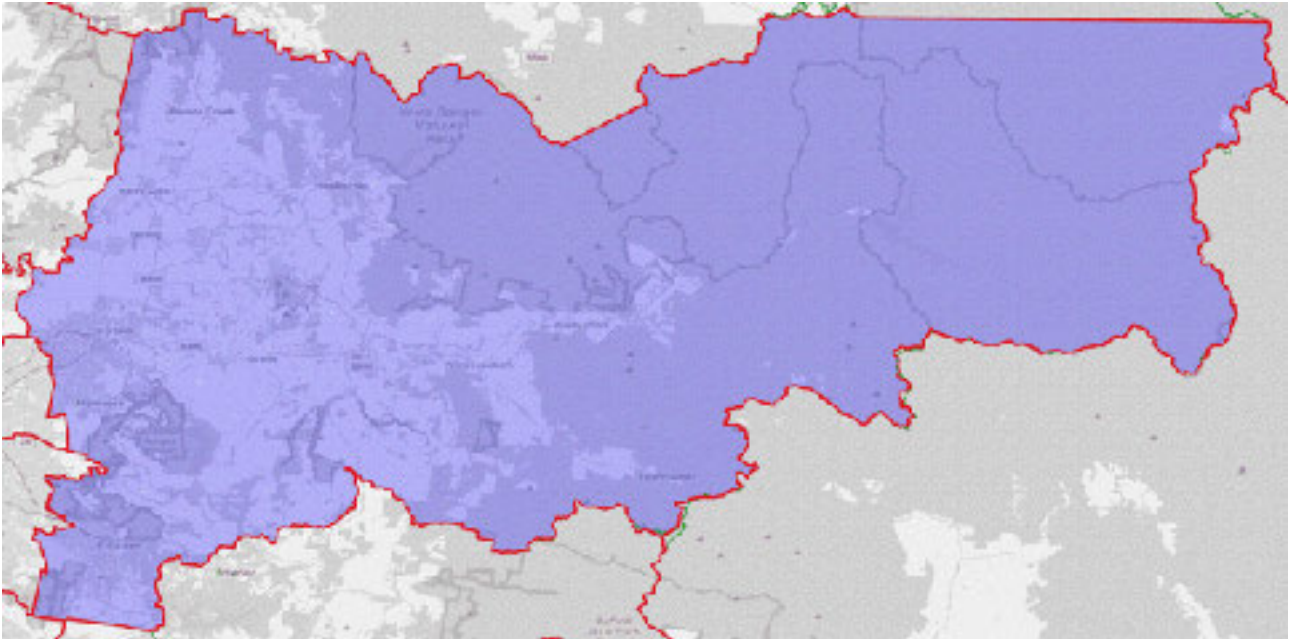


Suggested boundaries of Menzies

Casey

Casey was redrawn at the last redistribution to make the division coterminous with Yarra Ranges Shire LGA. Given that it comfortably meets both sets of numerical criteria, there is no need for any change.

Description	Enrolment	Projected enrolment
Current division of Corio	113,577	118,788



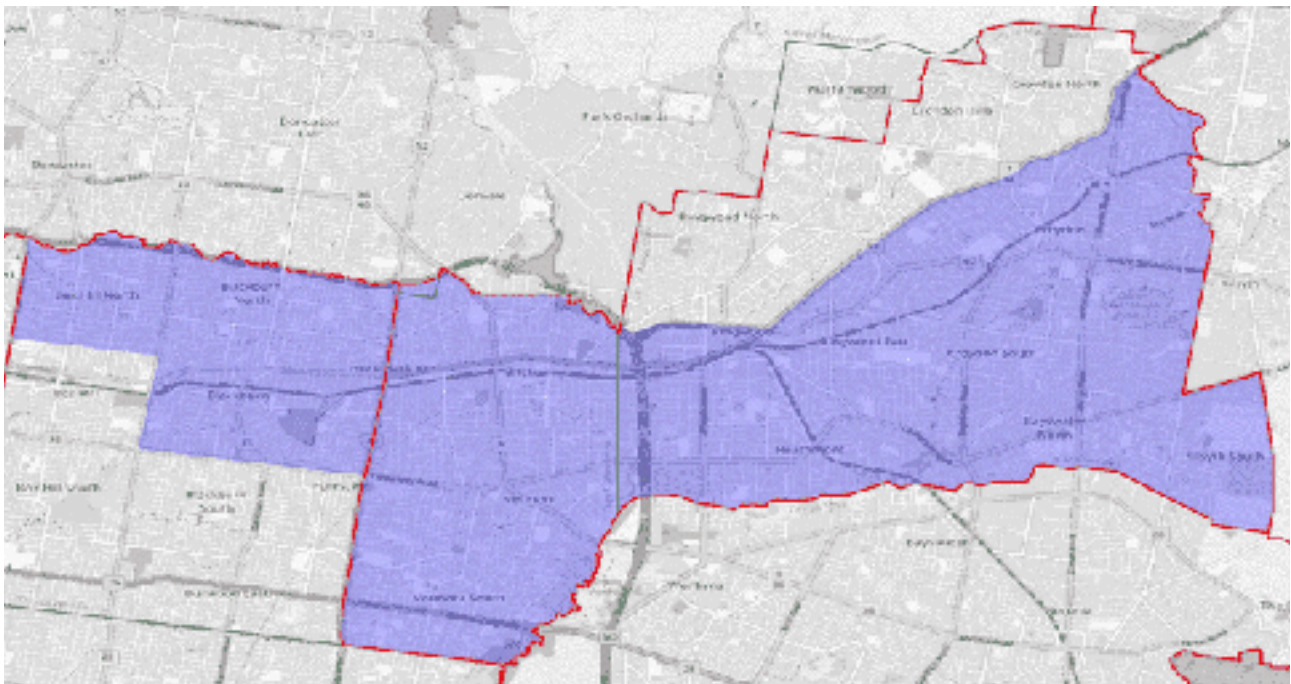
Suggested boundaries of Casey

Deakin

With Menzies shifting south and the boundary with Casey remaining fixed, the obvious place for Deakin to expand is west. I suggest adding everything north of Canterbury Rd, east of Middleborough Rd, and south of the Maroondah Hwy, i.e. the entirety of Blackburn, Blackburn North, the remainder of Nunawading, plus a small section of Forest Hill. This isn't quite enough to get the division to parity, so the addition of Box Hill North is also necessary.

This turns Deakin into a thin east-west elongated division. But despite the unusual shape there is a clear community of interest that runs along major transport routes, in particular the Lilydale railway line.

Description	Enrolment	Projected enrolment
Current division of Deakin	108,358	112,556
LESS Croydon Hills - Warranwood SA2	-9,497	-9,708
LESS Croydon - West SA2 (part)	-2,004	-2,098
LESS Ringwood SA2 (part)	-6,229	-6,602
LESS Ringwood North SA2	-7,021	-7,174
from Chisholm		
Blackburn SA2	14,701	15,928
Box Hill North SA2	7,141	7,589
Forest Hill SA2 (part)	834	867
Nunawading SA2	3,592	3,752
Total	109,875	115,110



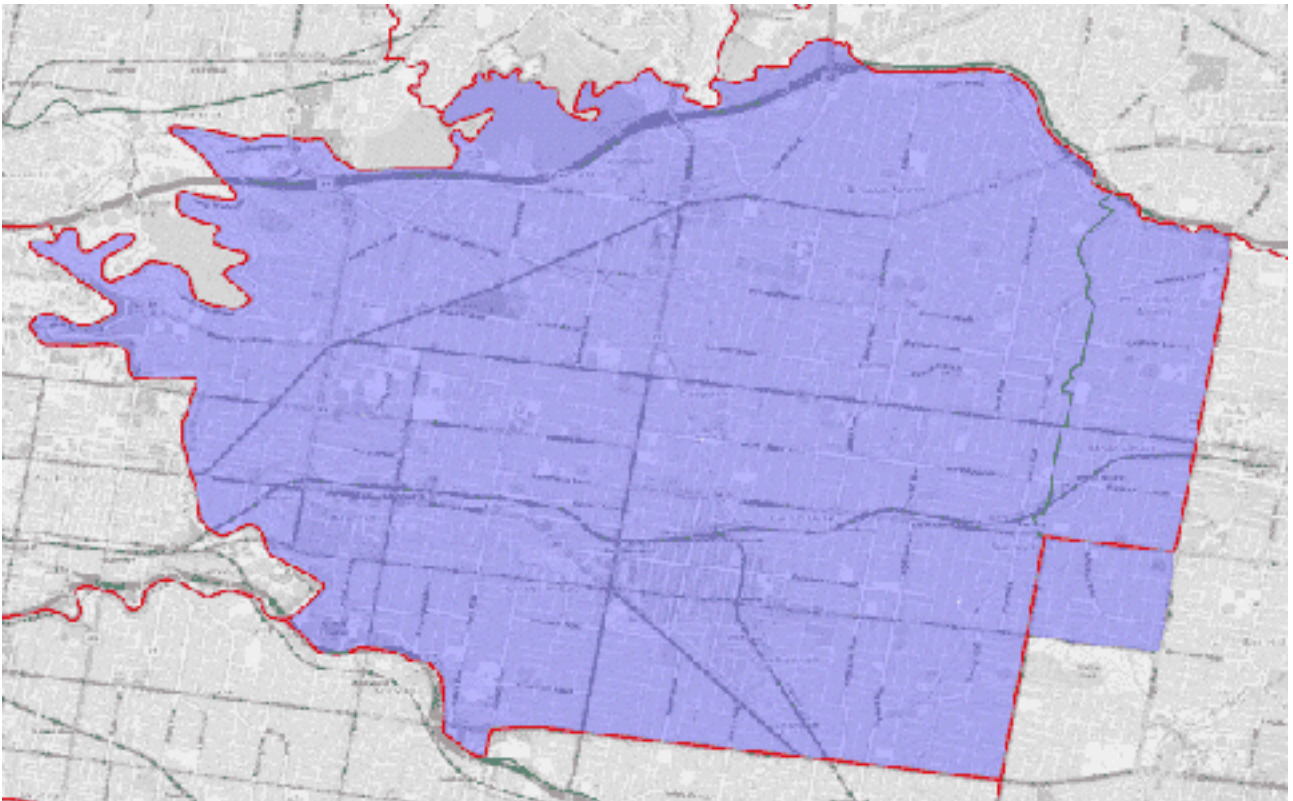
Suggested boundaries of Deakin

Kooyong

On its present boundaries, Kooyong meets the numerical requirements, albeit towards the lower end on projected figures. I suggest including the remainder of Surrey Hills from Chisholm to get the division closer to parity.

I note that the proposed map for the last redistribution drew Kooyong in this manner, i.e. with all of Surrey Hills within the division. That it was altered in the final stage appeared to be based less on its own merits and more to facilitate a series of transfers that allowed Casey and Aston to better align to their respective LGA boundaries.

Description	Enrolment	Projected enrolment
Current division of Kooyong	108,078	113,754
from Chisholm		
Surry Hills SA2	2,931	3,023
Total	111,009	116,777

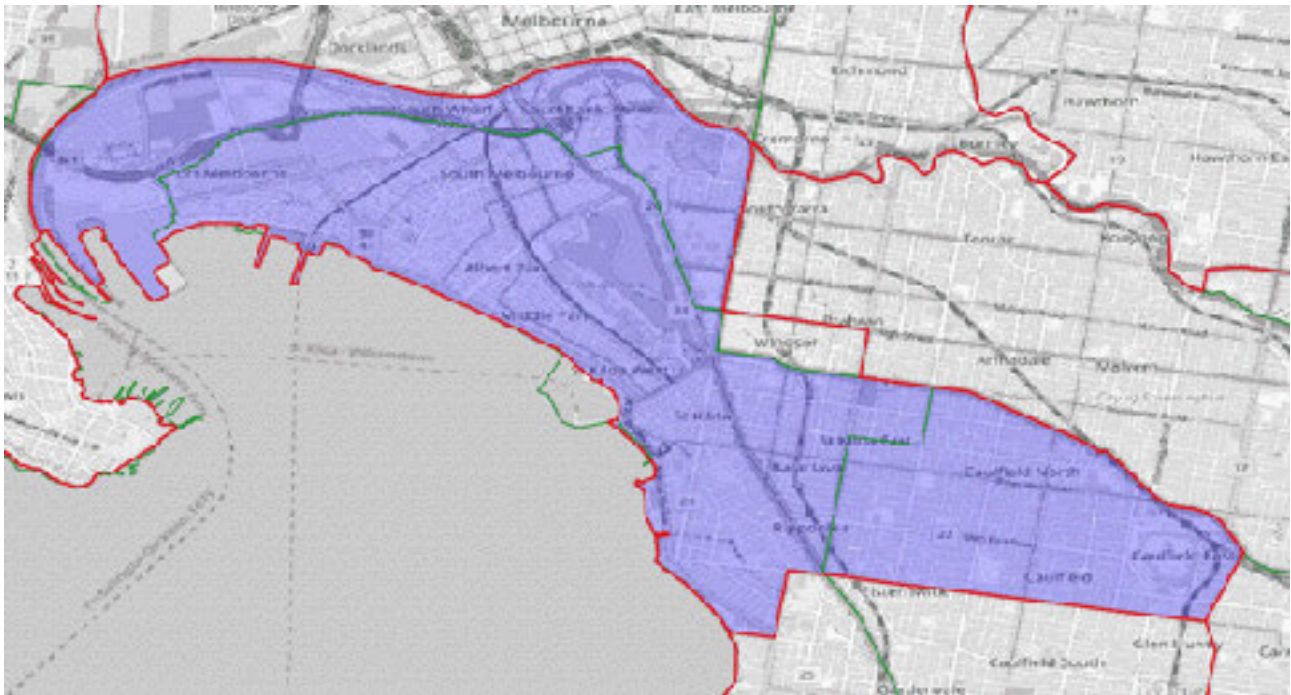


Suggested boundaries of Kooyong

Macnamara

Macnamara (formerly Melbourne Ports) has long had an unusual L-shape, wrapping around the neighbouring division of Higgins. The chief advantage of this arrangement seemed to be keeping the City of Stonnington LGA entirely within the division of Higgins. This arrangement was undercut by the transfer of Windsor from Higgins to Macnamara at the last redistribution, leading some to question whether it wasn't time to revisit the geographical arrangement of Macnamara and Higgins. This redistribution may yet do that, but given that Macnamara is above parity by roughly the same amount enrolled within Windsor - approximately 5,000 voters on projected figures - the simplest solution is to return that suburb to Higgins.

Description	Enrolment	Projected enrolment
Current division of Macnamara	114,564	121,453
LESS Prahran - Windsor SA2	-5,056	-5,177
Total	109,508	116,276

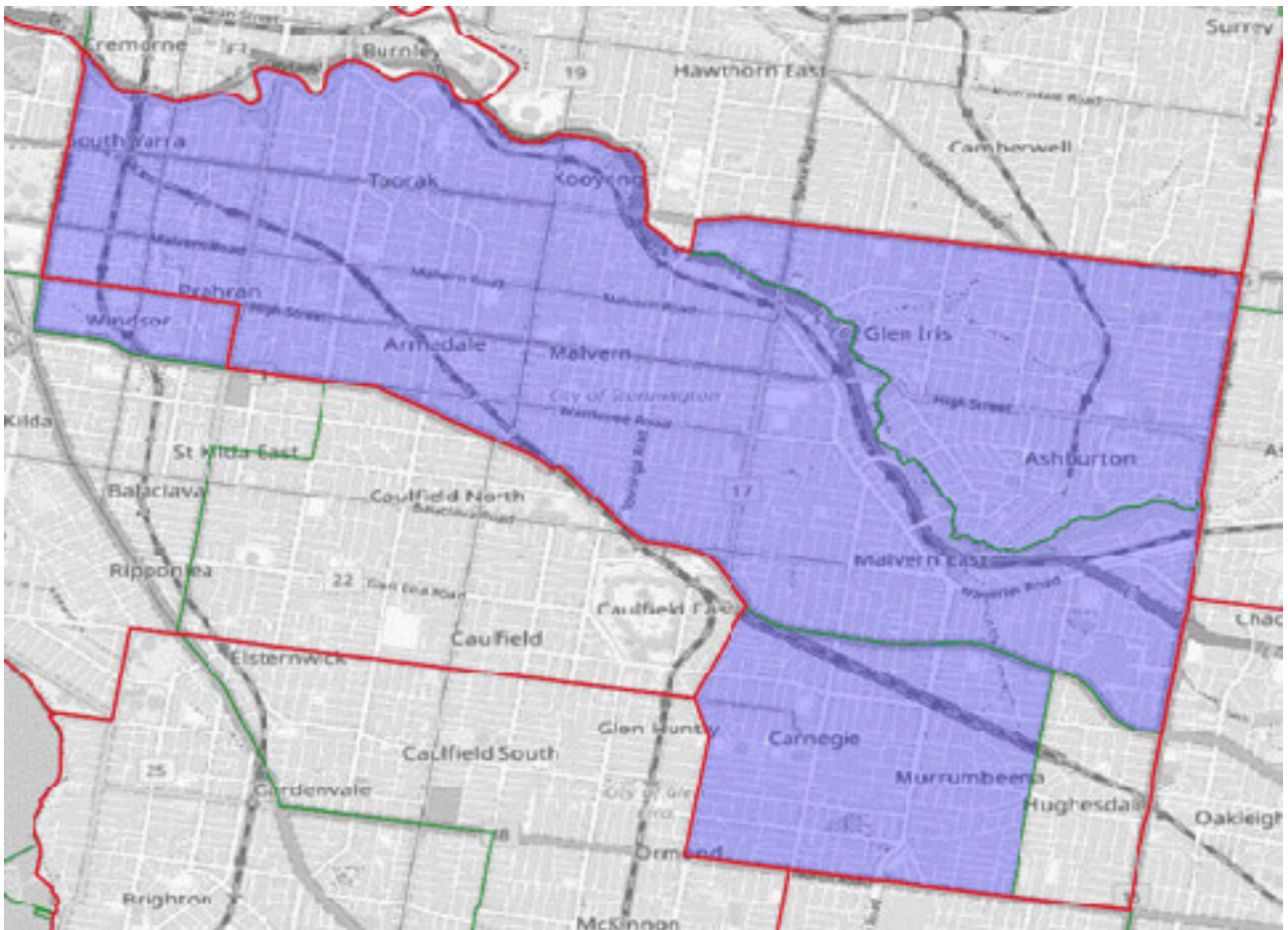


Suggested boundaries of Macnamara

Higgins

Higgins requires a compensating adjustment for gaining Windsor. Excising the similarly sized suburb of Hughesdale at its south-eastern end does the trick. Both changes better align the division with administrative boundaries; it unites the City of Stonnington LGA whilst losing its share of the City of Monash LGA.

Description	Enrolment	Projected enrolment
Current division of Higgins	111,285	117,504
LESS Hughesdale SA2	-4,929	-5,218
from Macnamara		
Prahran - Windsor SA2	5,056	5,177
Total	111,412	117,463

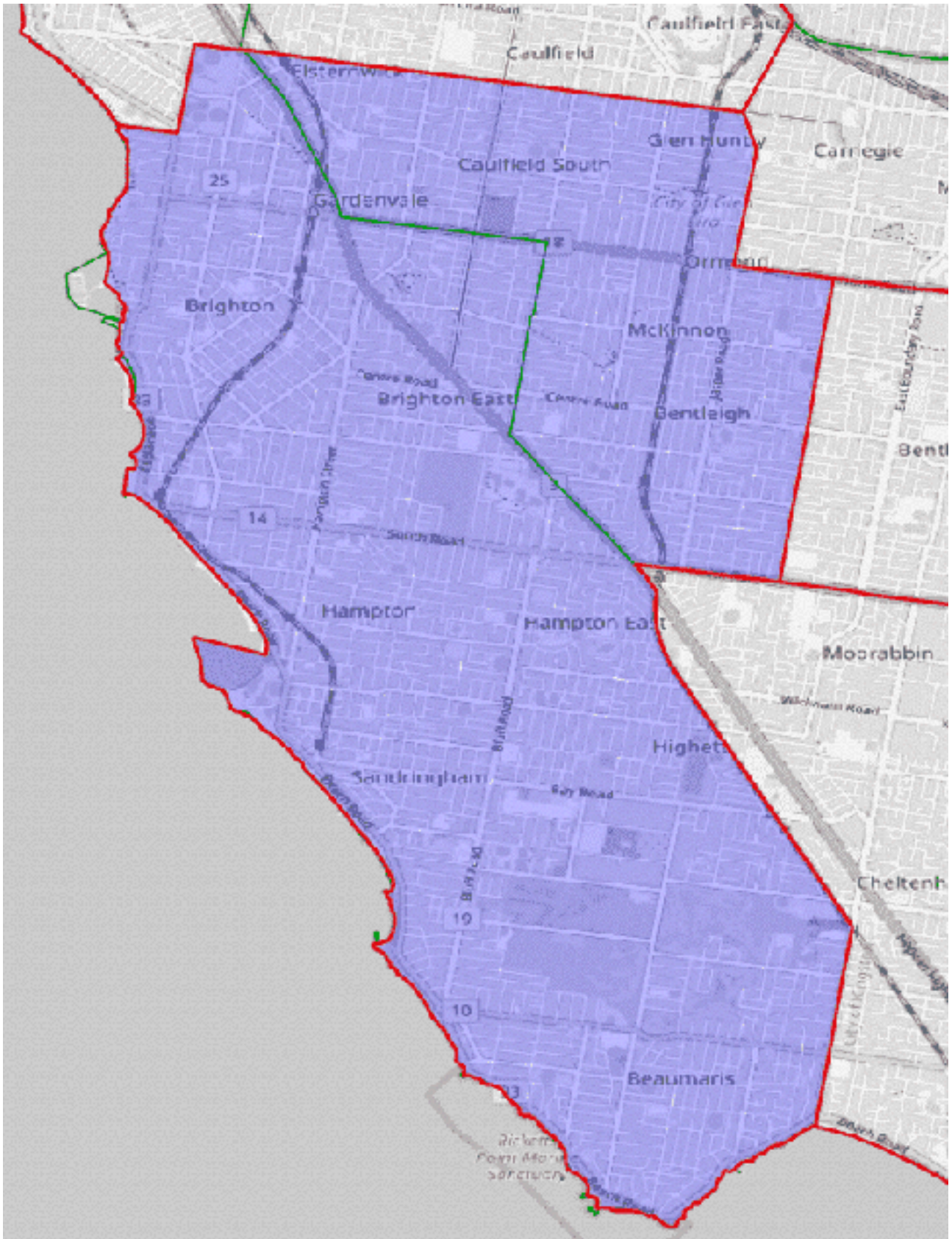


Suggested boundaries of Higgins

Goldstein

Goldstein requires no change.

Description	Enrolment	Projected enrolment
Current division of Goldstein	109,554	115,856

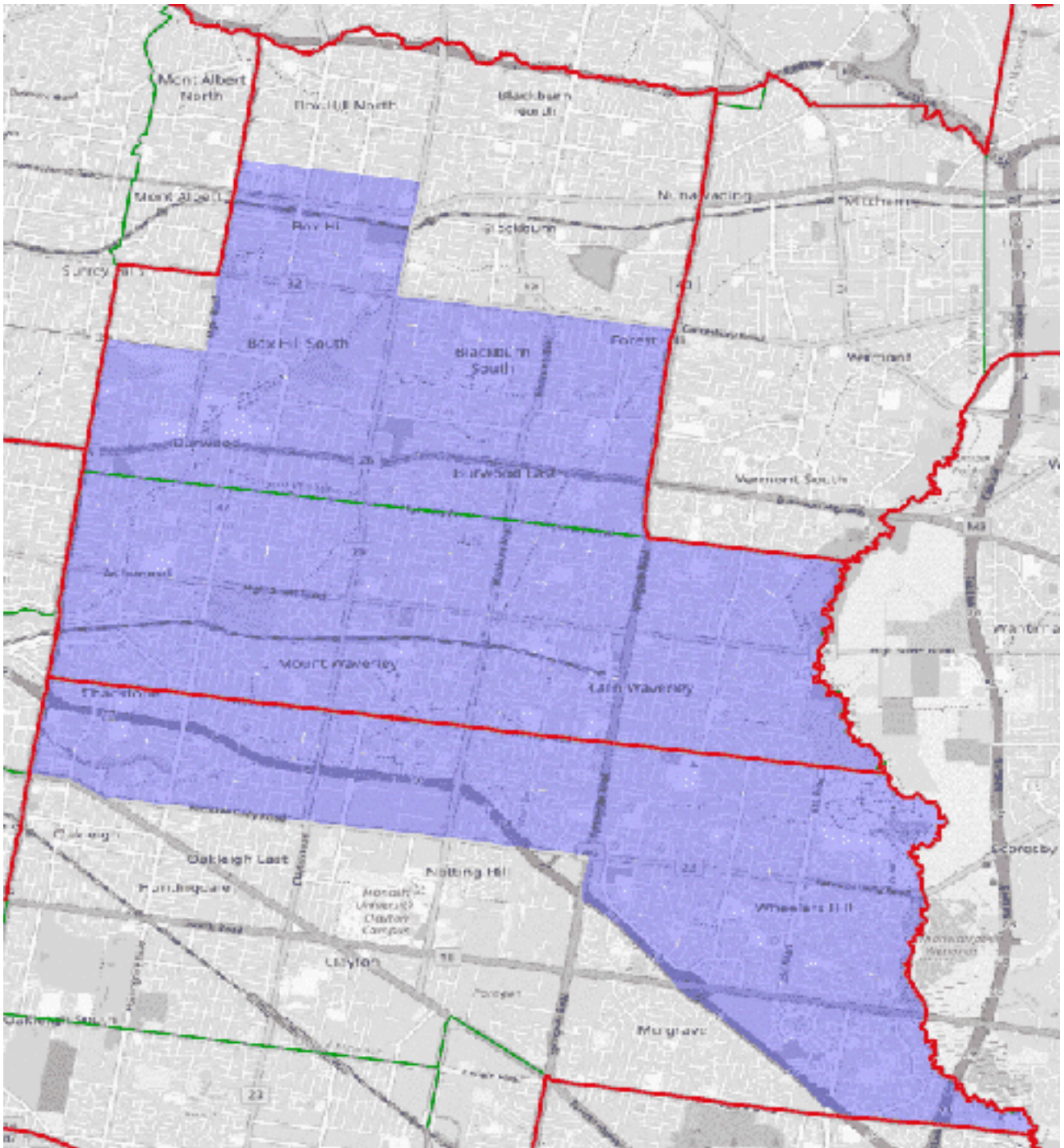


Suggested boundaries of Goldstein

Chisholm

Chisholm is forced to shift south with many of its northern parts transferred to Deakin. I suggest moving the southern boundary to Ferntree Gully Rd (using the Princes Hwy west of its western end) and the Monash Fwy east of Springvale Rd, as well as Police Rd to Dandenong Creek, which serves as the eastern boundary. This unites the suburbs of Chadstone, Mount Waverley, Glen Waverley, adds all of Wheelers Hill, it also adds the eastern part of Mulgrave and the northern part of Oakleigh.

Description	Enrolment	Projected enrolment
Current division of Chisholm	106,161	112,012
<i>LESS</i> Blackburn SA2	-14,701	-15,928
<i>LESS</i> Box Hill North SA2	-7,141	-7,589
<i>LESS</i> Forest Hill SA2 (<i>part</i>)	-834	-867
<i>LESS</i> Nunawading SA2	-3,592	-3,752
<i>LESS</i> Surrey Hills SA2	-2,931	-3,023
from Hotham		
Ashwood - Chadstone SA2	2,944	3,083
Glen Waverley - East SA2	2,423	2,477
Glen Waverley - West SA2	4,237	4,306
Mount Waverley - South	6,344	6,588
Mulgrave SA2 (<i>part</i>)	5,116	5,254
Oakleigh - Huntingdale SA2 (<i>part</i>)	650	696
Wheelers Hill SA2	14,131	14,101
Total	112,807	117,358

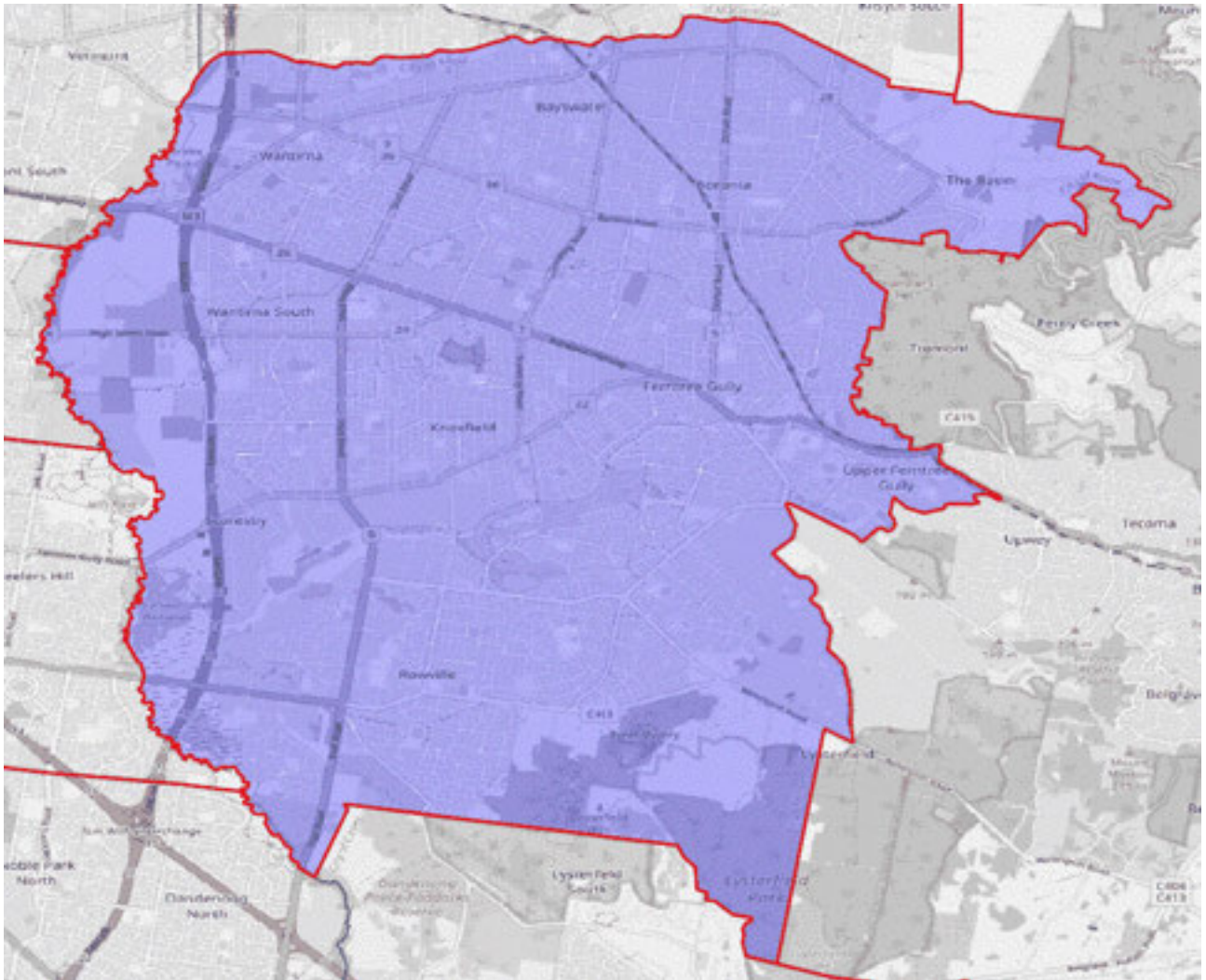


Suggested boundaries of Chisholm

Aston

Aston was made coterminous with City of Knox LGA at the last redistribution. It remains within tolerance and can be left unchanged.

Description	Enrolment	Projected enrolment
Current division of Aston	111,098	115,439



Suggested boundaries of Aston

Hotham

The large transfers to Chisholm are only partially offset by taking Hughesdale from Higgins. Hotham must expand east, which is desirable since it unites Springvale and Springvale South in the division. Also added is Noble Park - excepting a small chunk north of the railway line and east of Chandler Rd - as well as part of Keysborough north of Cheltenham Rd.

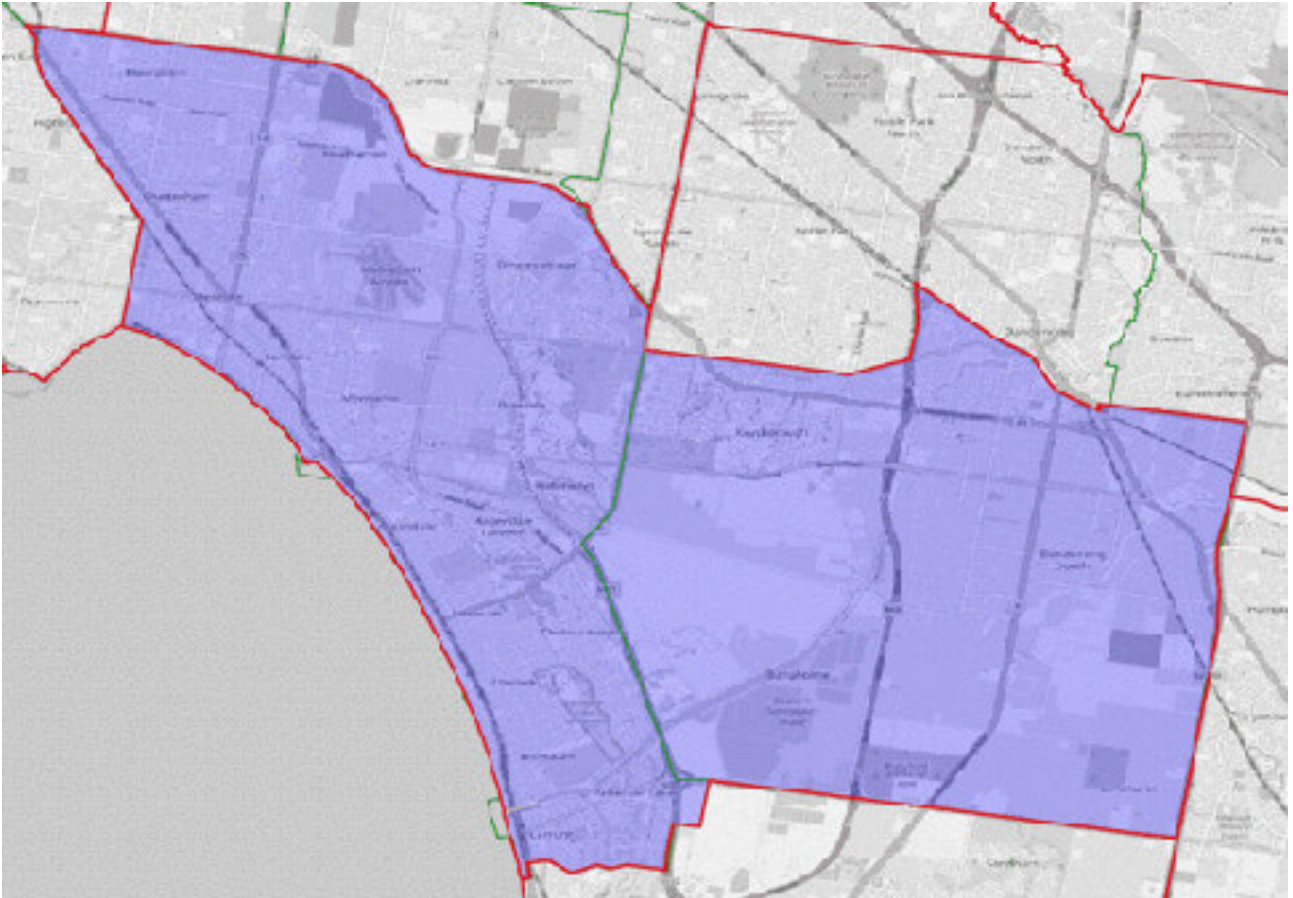
Description	Enrolment	Projected enrolment
Current division of Hotham	108,535	112,790
<i>LESS</i> Ashwood - Chadstone SA2	-2,944	-3,083
<i>LESS</i> Glen Waverley - East SA2	-2,423	-2,477
<i>LESS</i> Glen Waverley - West SA2	-4,237	-4,306
<i>LESS</i> Mount Waverley - South	-6,344	-6,588
<i>LESS</i> Mulgrave SA2 (<i>part</i>)	-5,116	-5,254
<i>LESS</i> Oakleigh - Huntingdale SA2 (<i>part</i>)	-650	-696
<i>LESS</i> Wheelers Hill SA2	-14,131	-14,101
from Higgins		
Hughesdale SA2	4,929	5,218
from Bruce		
Keysborough SA2	8,114	8,702
Noble Park - East SA2 (<i>part</i>)	5,118	5,229
Noble Park - West SA2	10,875	11,252
Springvale SA2	6,045	6,307
Springvale South SA2	5,257	5,504
Total	113,028	118,497

Isaacs

Isaacs is at parity and requires no change.

I did consider territorial swaps with Bruce, i.e. placing more of Dandenong into Bruce and more of Keysborough into Isaacs. However, the lack any obvious strong boundaries in the northern part of Keysborough told against this plan. Thus, Isaacs is left unchanged.

Description	Enrolment	Projected enrolment
Current division of Isaacs	109,823	117,413

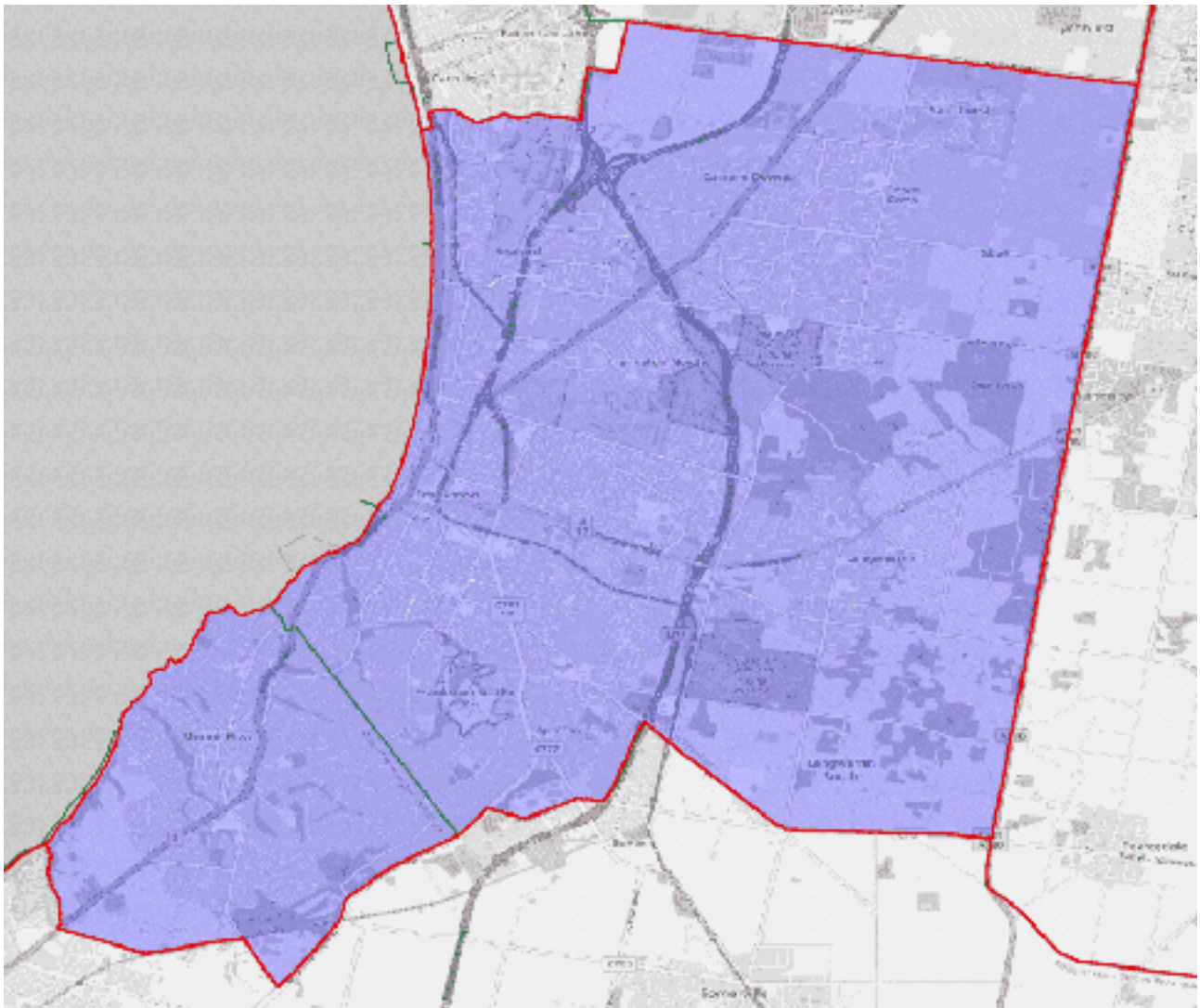


Suggested boundaries of Isaacs

Dunkley

Dunkley was redrawn at the last redistribution to more closely align to its LGA boundaries. It is within tolerance and can be left unchanged.

Description	Enrolment	Projected enrolment
Current division of Dunkley	111,277	114,591

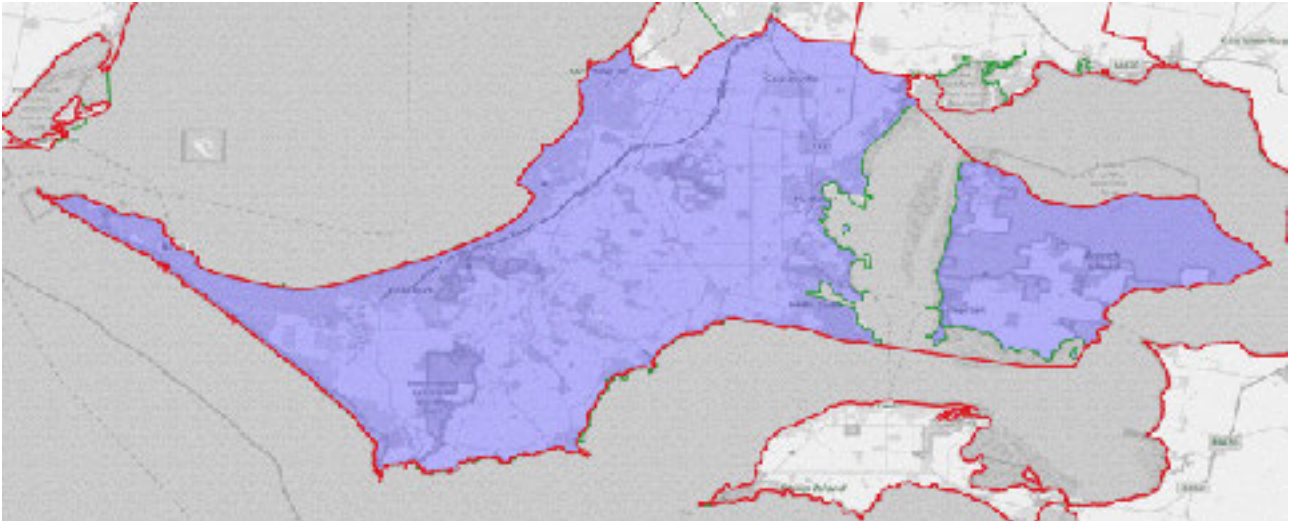


Suggested boundaries of Dunkley

Flinders

Flinders was also redrawn at the last redistribution to sit entirely within Mornington Peninsula Shire LGA. It is at parity and can be left unchanged.

Description	Enrolment	Projected enrolment
Current division of Flinders	112,085	117,374



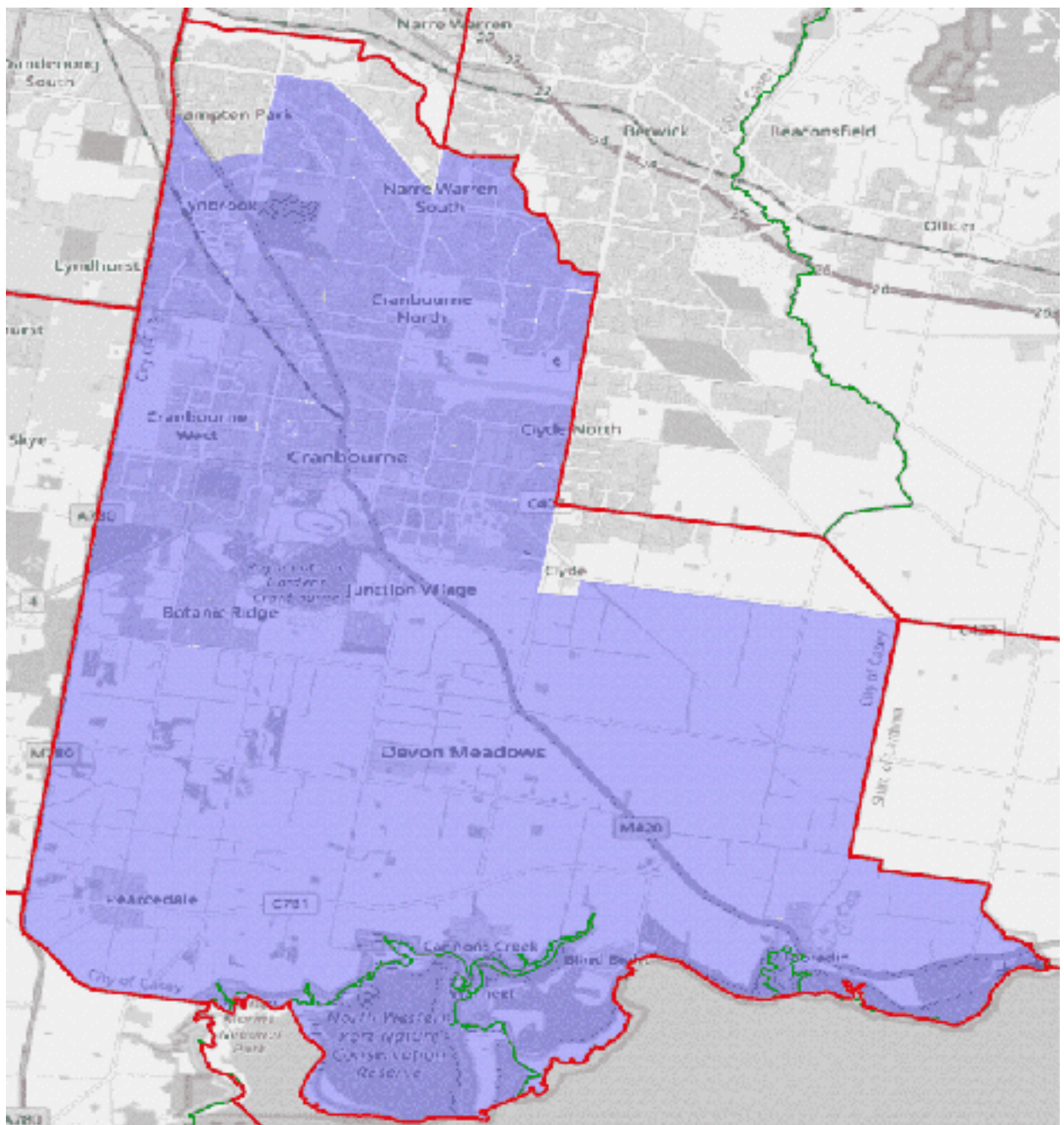
Suggested boundaries of Flinders

Holt

Holt is projected to be far above tolerance and needs to shed voters. I excise that part of Hampton Park west of Hallam Rd, the parts of Hallam Park and Narre Warren South north of Pound Rd, as well as that part of Clyde north of Ballarto Rd.

I considered taking the opposite approach in the latter area in an attempt to unite Clyde and Clyde North in the division. However, the enrolment growth in this area is so great it didn't seem possible to satisfy the dual requirements.

Description	Enrolment	Projected enrolment
Current division of Holt	111,524	131,634
<i>LESS Cranbourne South SA2 (part)</i>	-1,705	-2,815
<i>LESS Hampton Park - Lynbrook SA2 (part)</i>	-7,959	-8,267
<i>LESS Narre Warren South (West) SA2 (part)</i>	-1,531	-1,620
Total	100,329	118,932

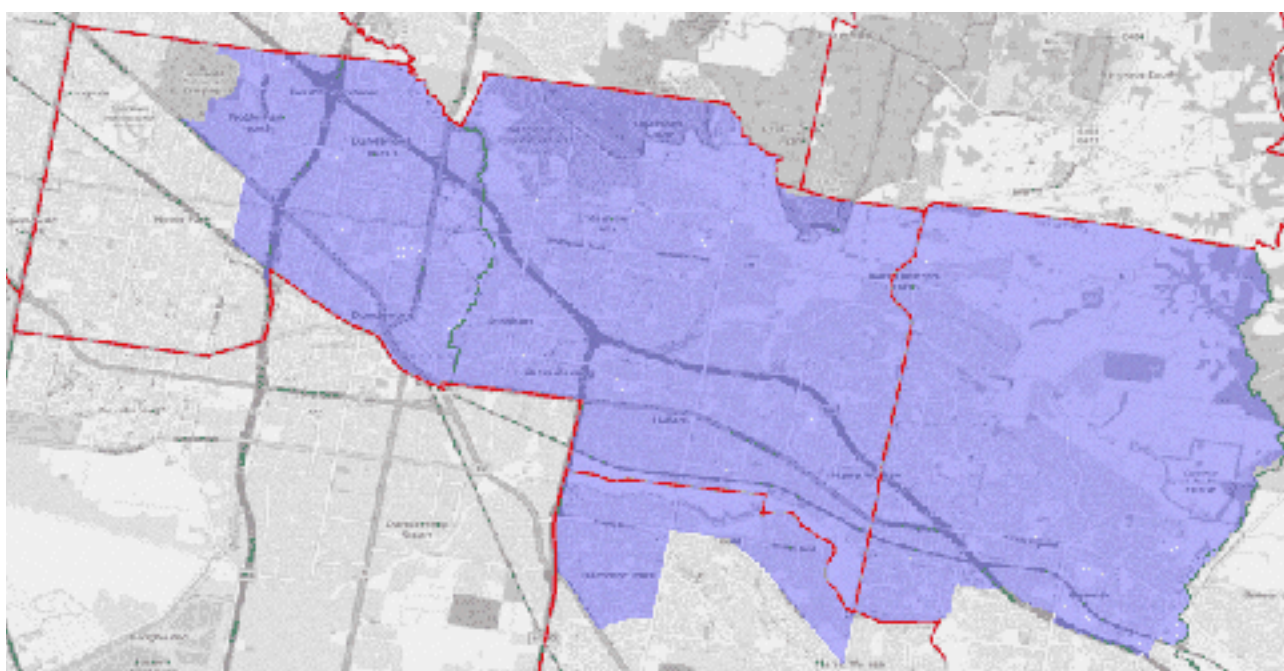


Suggested boundaries of Holt

Bruce

After transfers to Hotham and from Holt, Bruce must go east to bring up the numbers. I add the remainder of Narre Warren and Narre Warren North, as well as Berwick north of the Princes Hwy.

Description	Enrolment	Projected enrolment
Current division of Bruce	110,086	112,941
LESS Keysborough SA2	-8,114	-8,702
LESS Noble Park - East SA2 (part)	-5,118	-5,229
LESS Noble Park - West SA2	-10,875	-11,252
LESS Springvale SA2	-6,045	-6,307
LESS Springvale South SA2	-5,257	-5,504
from Holt		
Hampton Park - Lynbrook SA2 (part)	7,959	8,267
Narre Warren South (West) SA2 (part)	1,531	1,620
from La Trobe		
Berwick - North SA2	16,616	17,181
Narre Warren North SA2	2,908	3,153
Narre Warren - North East SA2	4,429	4,660
Narre Warren - South West SA2	4,798	4,982
Total	112,918	115,810



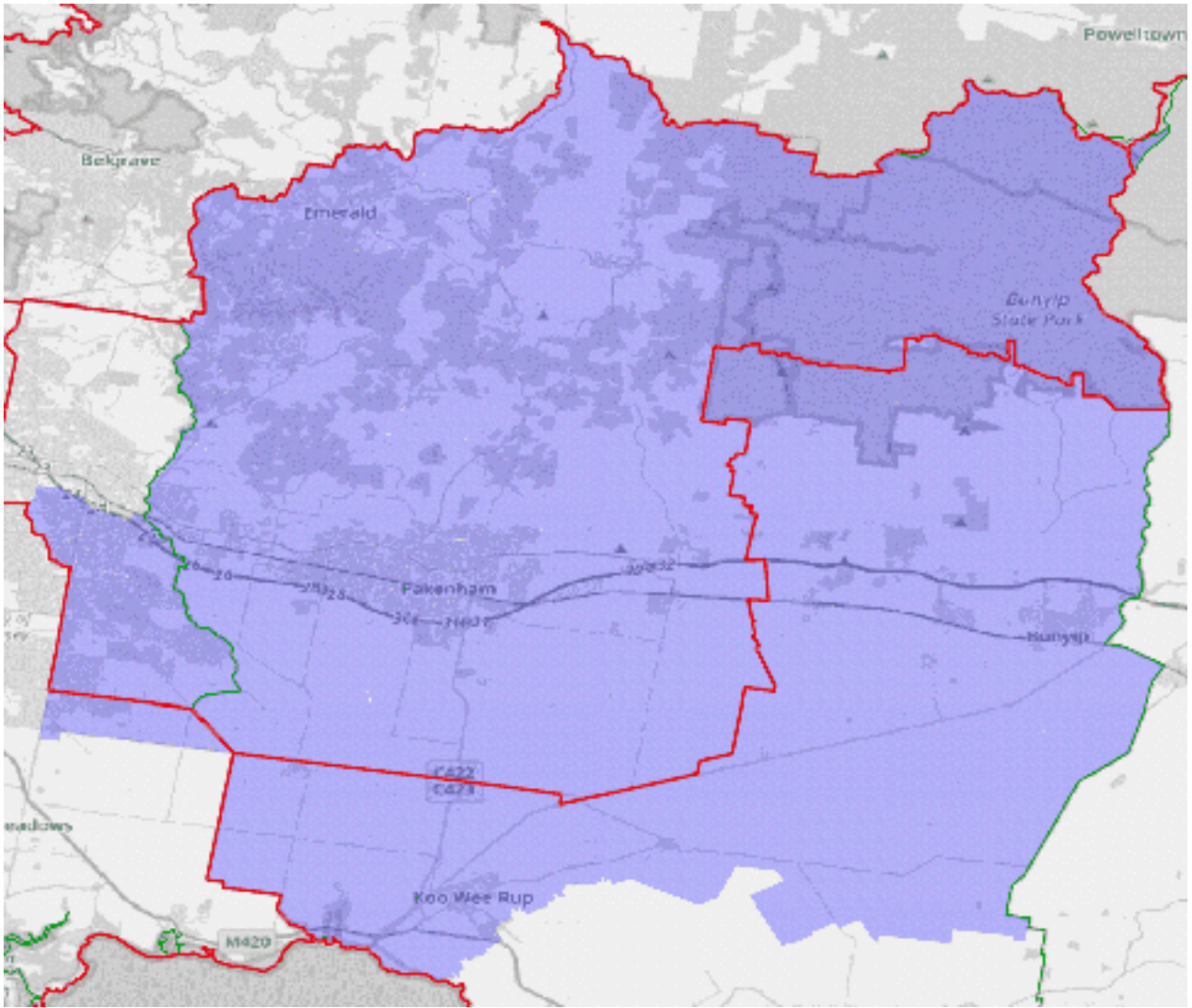
Suggested boundaries of Bruce

La Trobe

After transfers to Bruce, La Trobe requires some compensating adjustments. In addition to gaining part of Clyde from Holt, the division extends westward to Bunyip to align with the Cardinia Shire LGA boundary. This still leaves it slightly below tolerance on current figures, so the division also expands south to include Koo Wee Rup, Bayles, and Catani.

This puts La Trobe towards the lower of tolerance on current enrolment and towards the upper end on projections. This seems unavoidable given the massive growth in this area. La Trobe retains a clear community of interest, centred on the satellite suburb of Pakenham.

Description	Enrolment	Projected enrolment
Current division of La Trobe	116,542	137,861
LESS Berwick - North SA2	-16,616	-17,181
LESS Narre Warren North SA2	-2,908	-3,153
LESS Narre Warren - North East SA2	-4,429	-4,660
LESS Narre Warren - South West SA2	-4,798	-4,982
from Holt		
Cranbourne South SA2 (<i>part</i>)	1,705	2,815
from Monash		
Bunyip - Garfield SA2	5,574	5,938
Koo Wee Rup SA2 (<i>part</i>)	3,550	4,114
Total	98,620	120,752

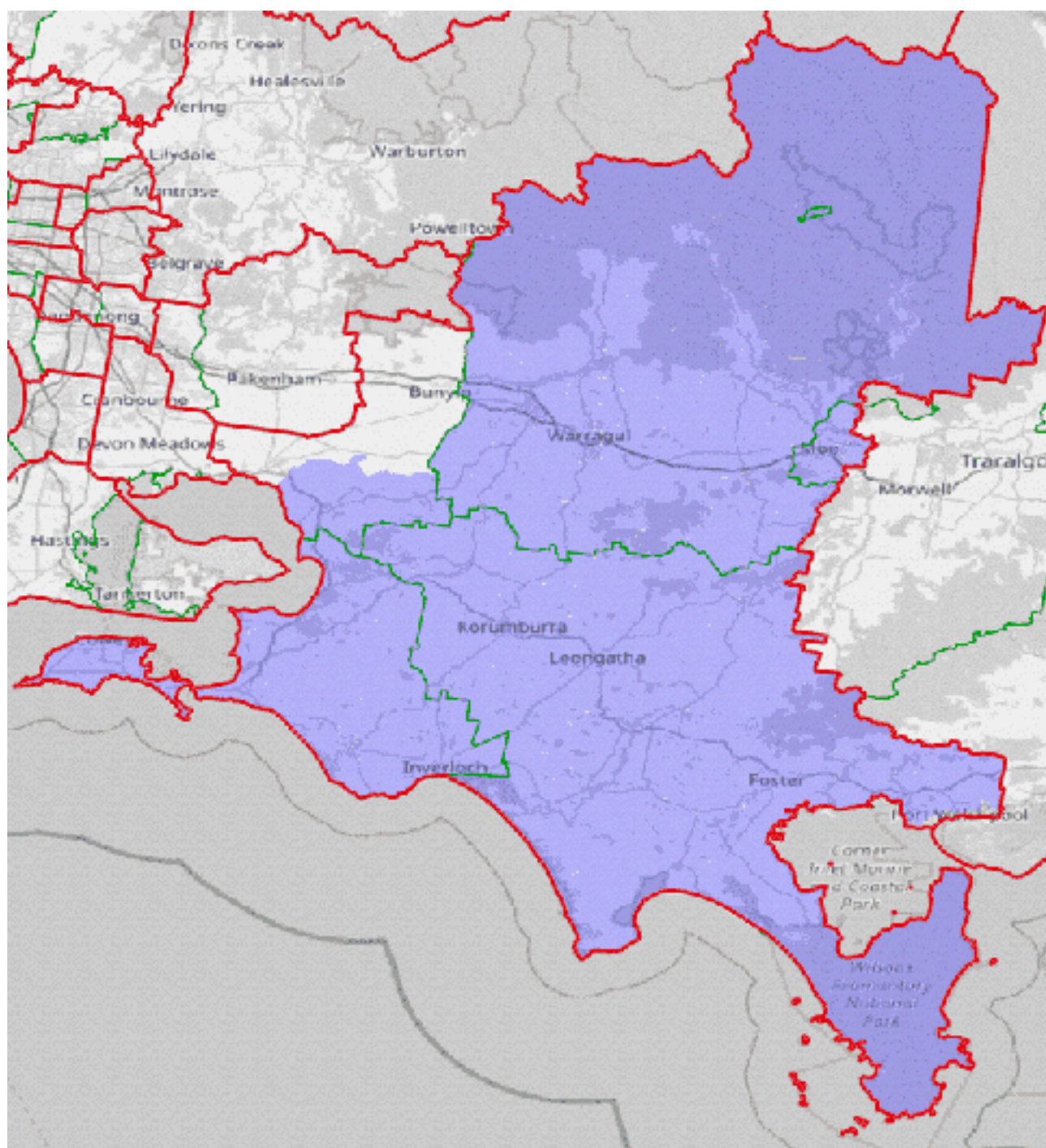


Suggested boundaries of La Trobe

Monash

After transfers of large parts of Cardinia Shire LGA to La Trobe, Monash is at parity and requires no further adjustments.

Description	Enrolment	Projected enrolment
Current division of Monash	115,568	125,734
LESS Bunyip - Garfield SA2	-5,574	-5,938
LESS Koo Wee Rup SA2 (part)	-3,550	-4,114
Total	106,444	115,682

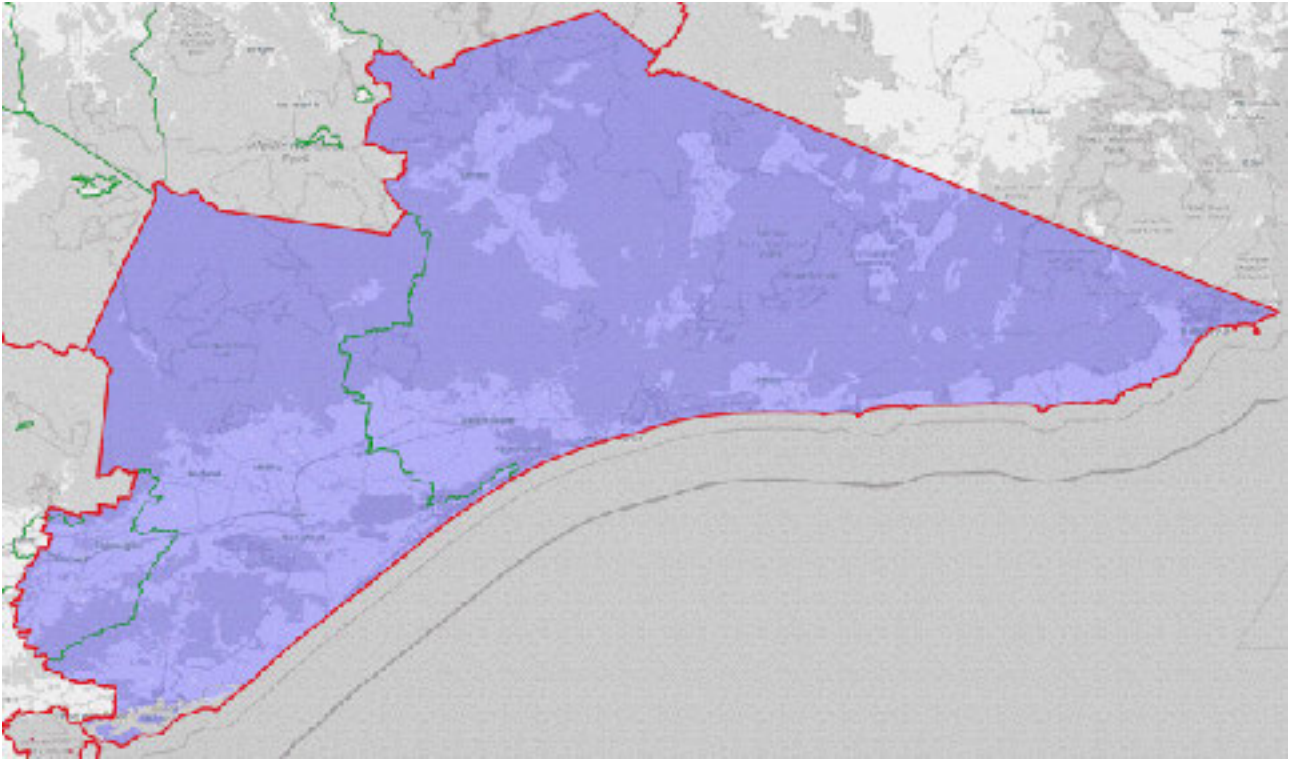


Suggested boundaries of Monash

Gippsland

No change is required to Gippsland.

Description	Enrolment	Projected enrolment
Current division of Gippsland	111,875	116,288



Suggested boundaries of Gippsland