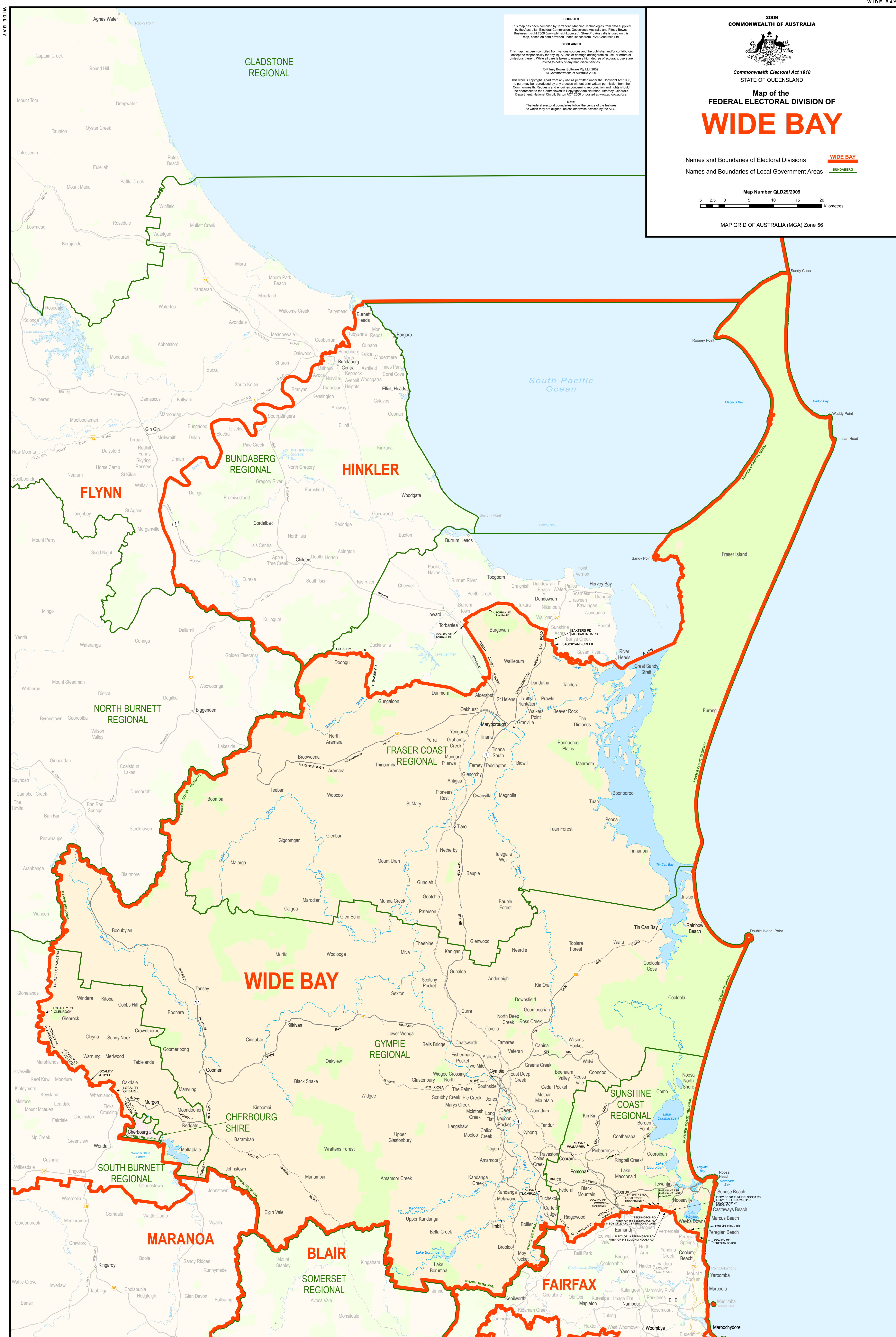


135° 30' 00" E

135° 30' 00" E



SOURCE
 This map has been compiled by Terraserver Mapping Technologies from data supplied by the Australian Electoral Commission, Queensland Australia and Property Services Queensland (2009) (www.aec.gov.au, www.qld.gov.au) based on the Map of Australia (2009) (www.aec.gov.au).

DISCLAIMER
 This map has been compiled from various sources and the publisher and/or contributors accept no responsibility for any errors, omissions or changes along time or space or omissions thereon. While all care is taken to ensure a high degree of accuracy, users are advised to verify any data independently.

© Property Services Queensland Pty Ltd. 2009
 © Commonwealth of Australia 2009

This work is copyright. Apart from any use as permitted under the Copyright Act 1968, no part may be reproduced by any process without prior written permission from the Commonwealth. Requests and enquiries concerning reproduction and rights should be addressed to the Commonwealth Copyright Administration, Attorney General's Department, National Circuit, Barton ACT 2600 or posted at www.ag.gov.au/copyright.

The federal electoral boundaries follow the centre of the features to which they are applied, unless otherwise stated by the AEC.

2009
COMMONWEALTH OF AUSTRALIA

Commonwealth Electoral Act 1998
 STATE OF QUEENSLAND

**Map of the
 FEDERAL ELECTORAL DIVISION OF
 WIDE BAY**

Names and Boundaries of Electoral Divisions **WIDE BAY**
 Names and Boundaries of Local Government Areas **SUMMARY**

Map Number QLD29/2009

MAP GRID OF AUSTRALIA (MGA) Zone 56

135° 30' 00" E