



# February 2016 MAP OF THE FEDERAL ELECTORAL DIVISION OF **NEW ENGLAND**



0 25 km

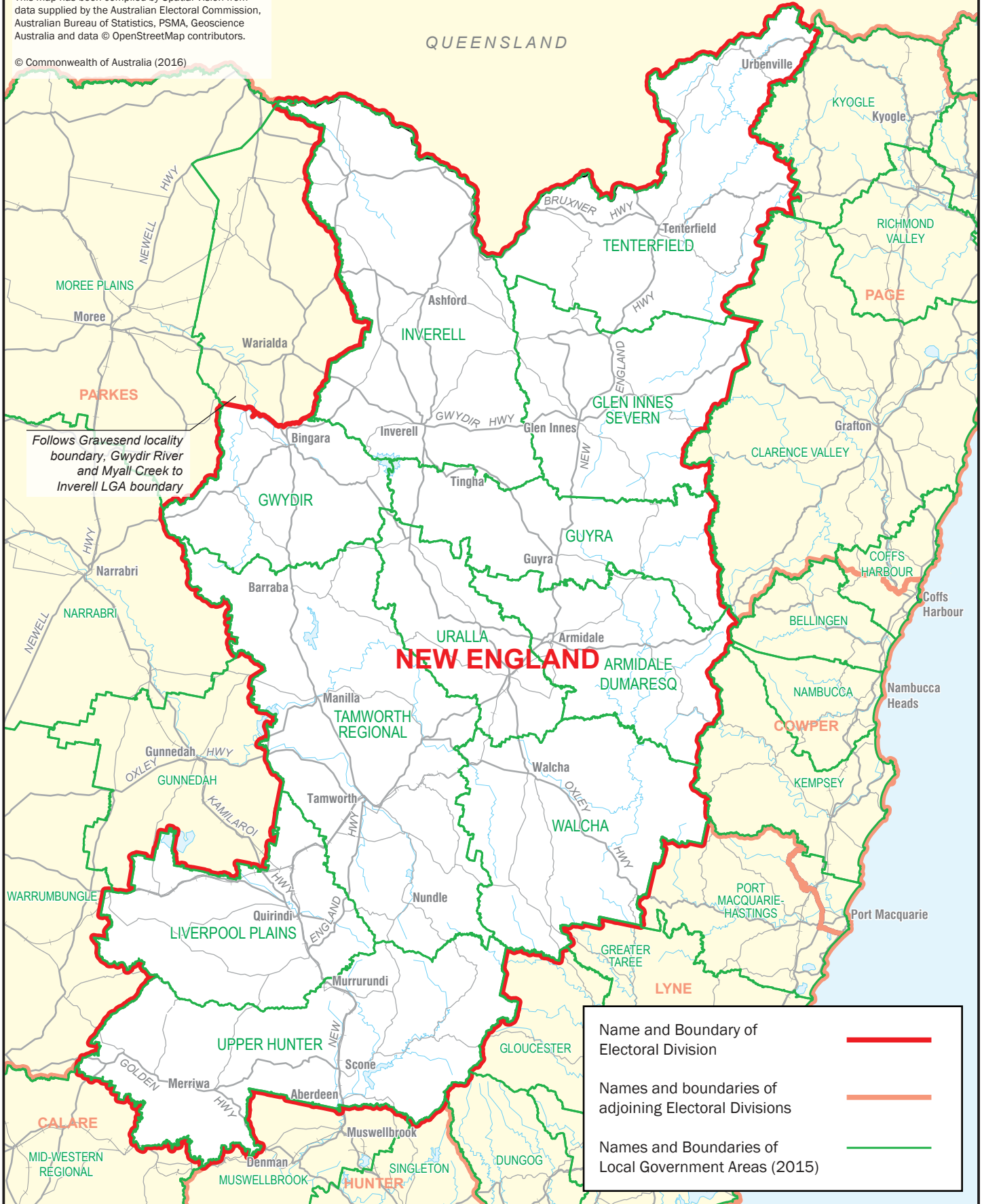


**SOURCES**

This map has been compiled by Spatial Vision from data supplied by the Australian Electoral Commission, Australian Bureau of Statistics, PSMA, Geoscience Australia and data © OpenStreetMap contributors.

© Commonwealth of Australia (2016)

QUEENSLAND



*Follows Gravesend locality boundary, Gwydir River and Myall Creek to Inverell LGA boundary*

Name and Boundary of Electoral Division	
Names and boundaries of adjoining Electoral Divisions	
Names and Boundaries of Local Government Areas (2015)	